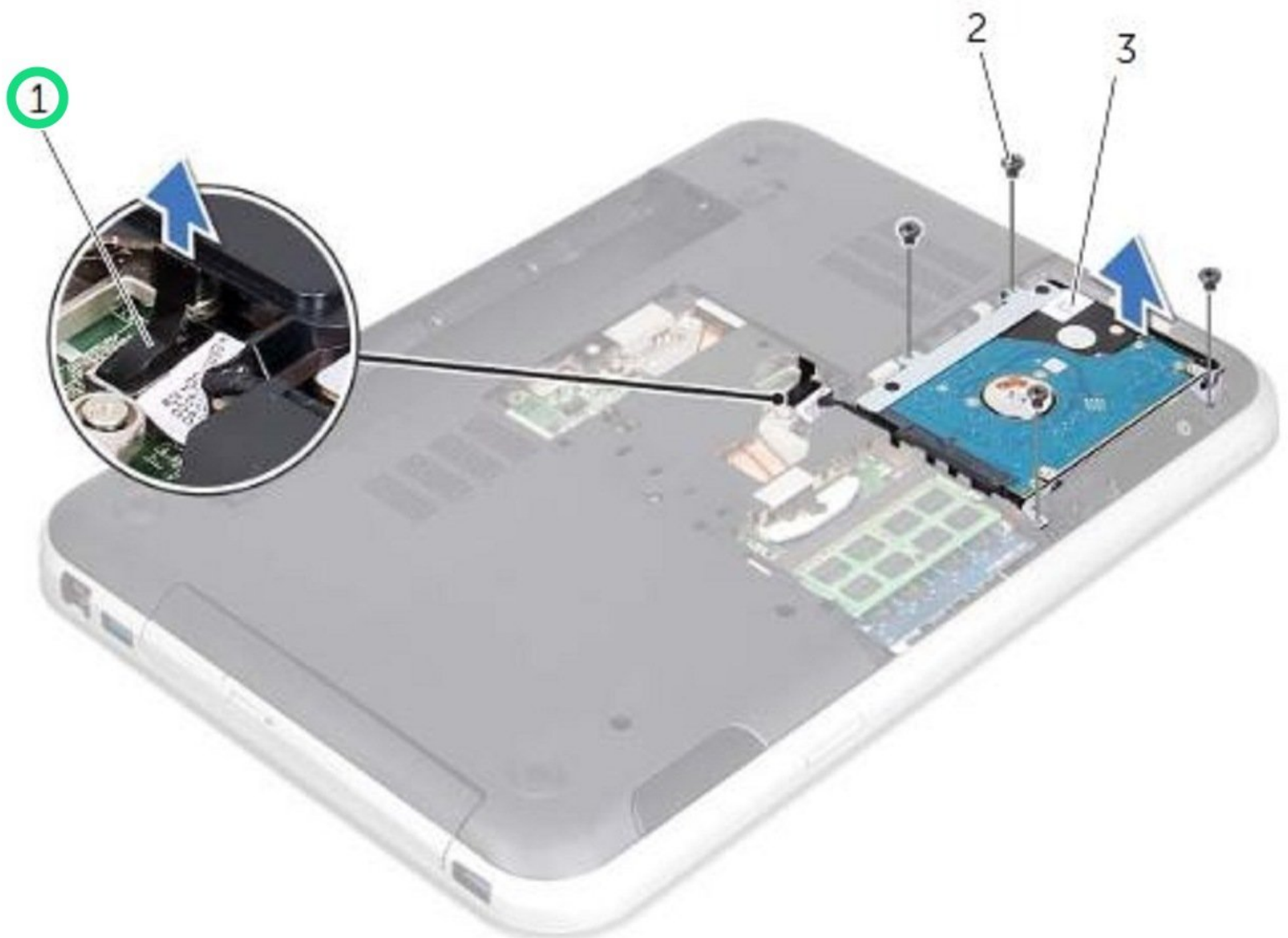




Dell Inspiron 14R 5420 Hard Drive Replacement

Written By: Terrence15



INTRODUCTION

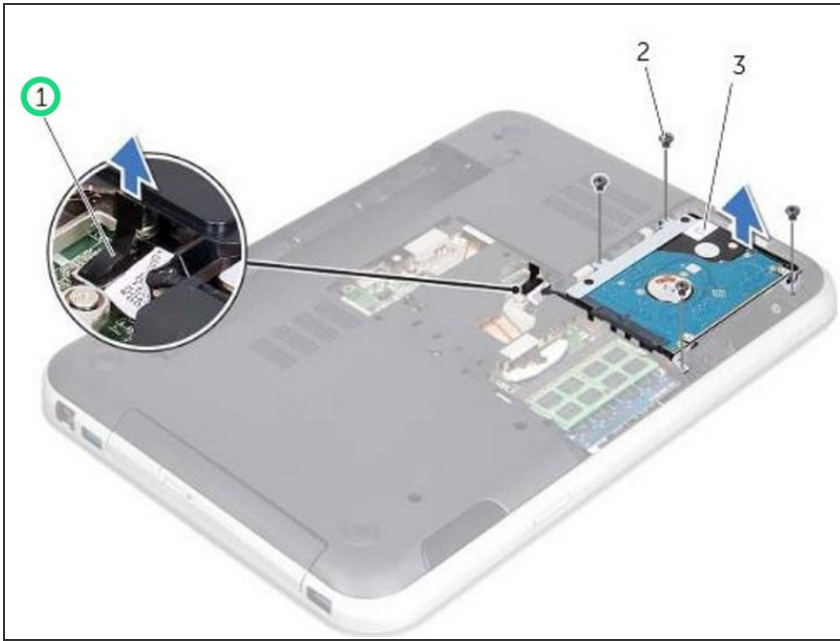
In this guide, we will show you how to remove and replace the Hard Drive.



TOOLS:

- [Phillips #0 Screwdriver](#) (1)
-

Step 1 — Disconnecting the Hard Drive Cable

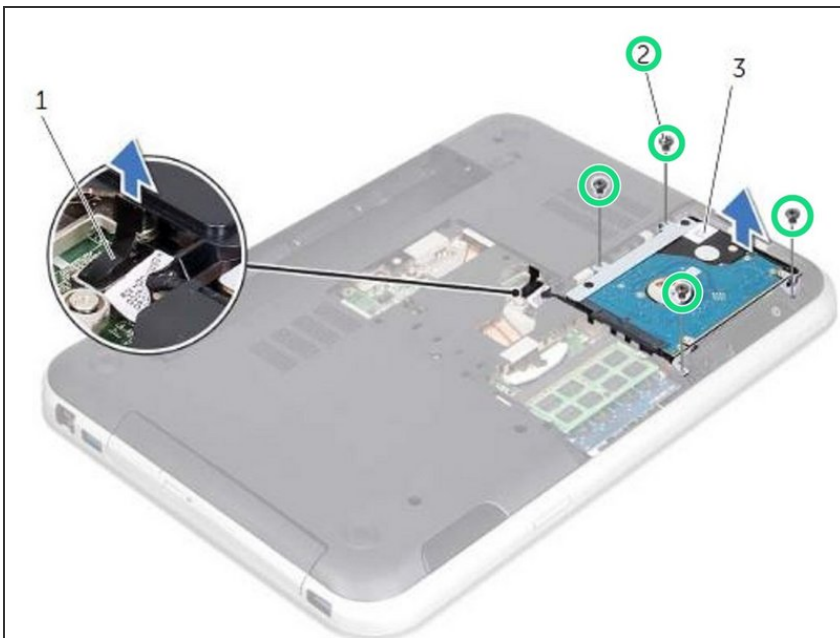


⚠ WARNING: Before working inside your computer, read the safety information that shipped with your computer and follow the steps in ["Before You Begin"](#).

⚠ CAUTION: Hard drives are extremely fragile. Exercise care when handling the hard drive.

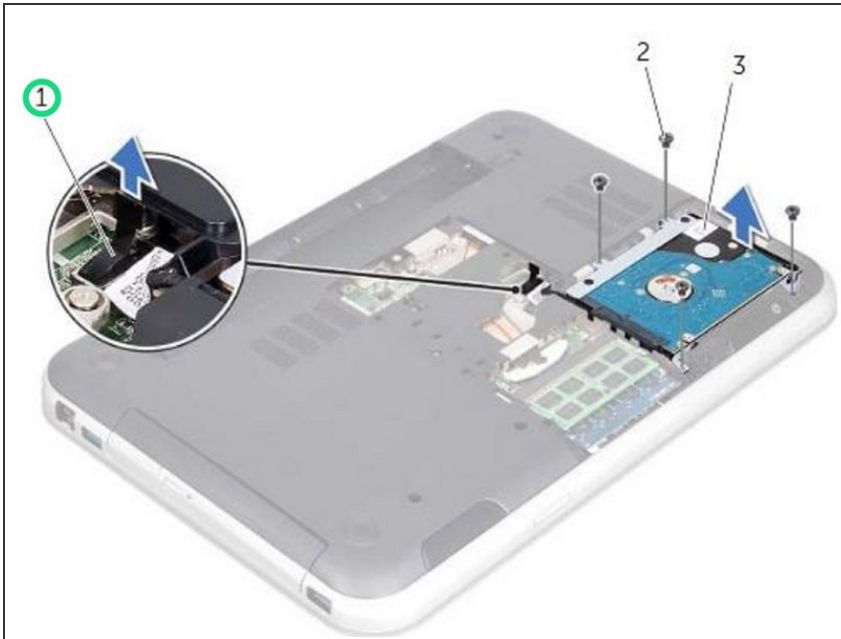
- Pull the pull-tab to disconnect the hard-drive cable from the system-board connector.

Step 2 — Remove the Screws



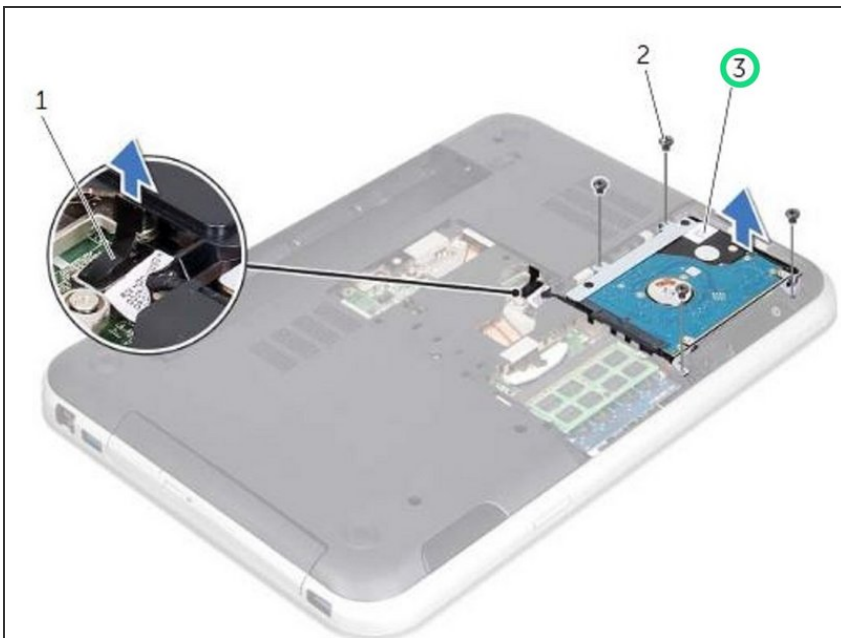
- Remove the screws that secure the hard-drive assembly to the computer base.

Step 3 — Remove the Cable



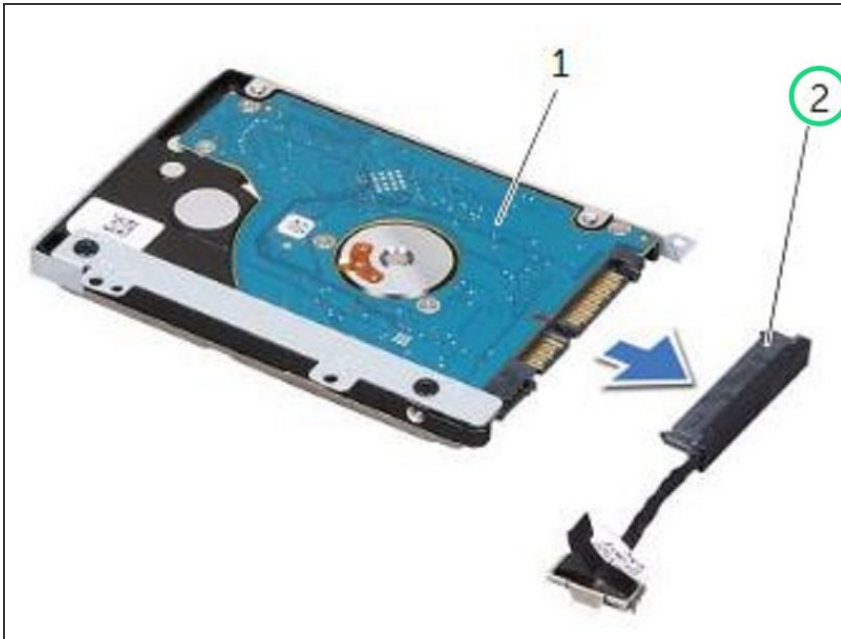
- Make a note of the hard-drive cable routing and remove the cable from the routing guides.

Step 4 — Lifting the Hard Drive Assembly



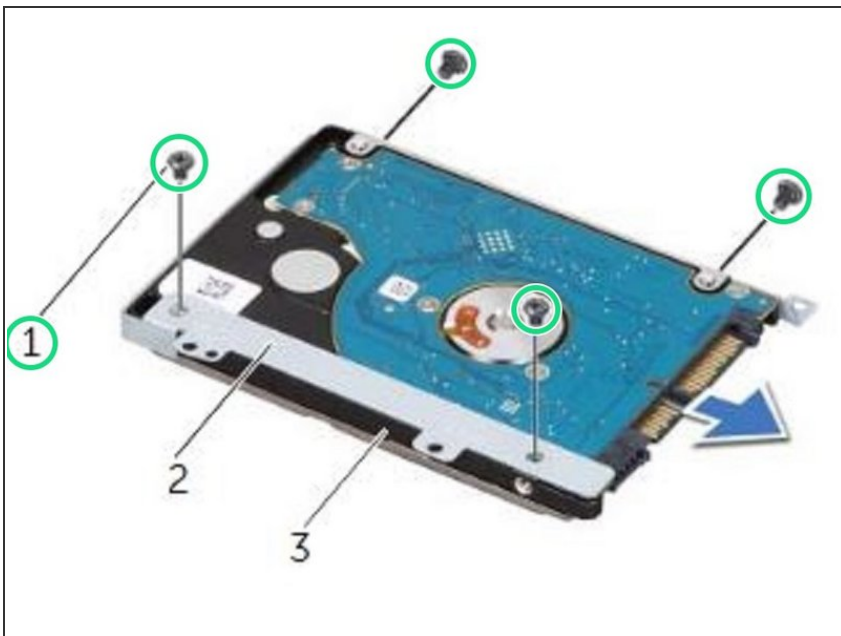
- Lift the hard-drive assembly along with its cable away from the computer base.

Step 5 — Disconnecting the Hard Drive Cable



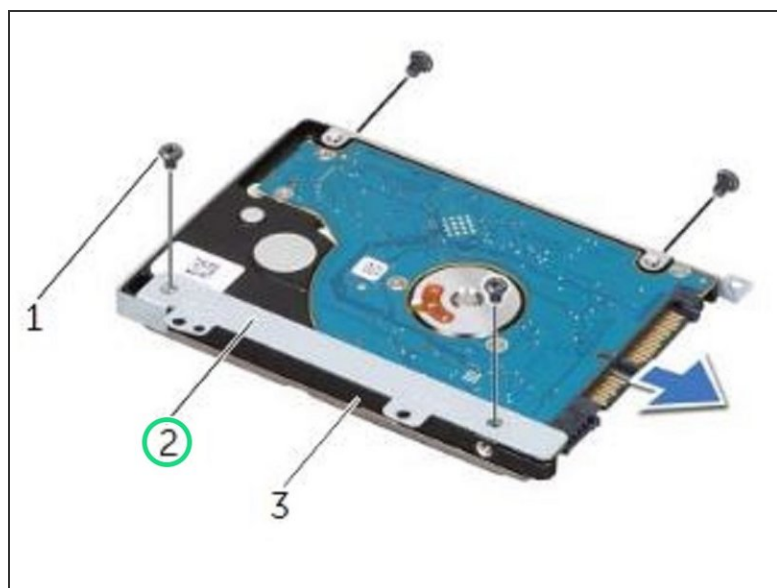
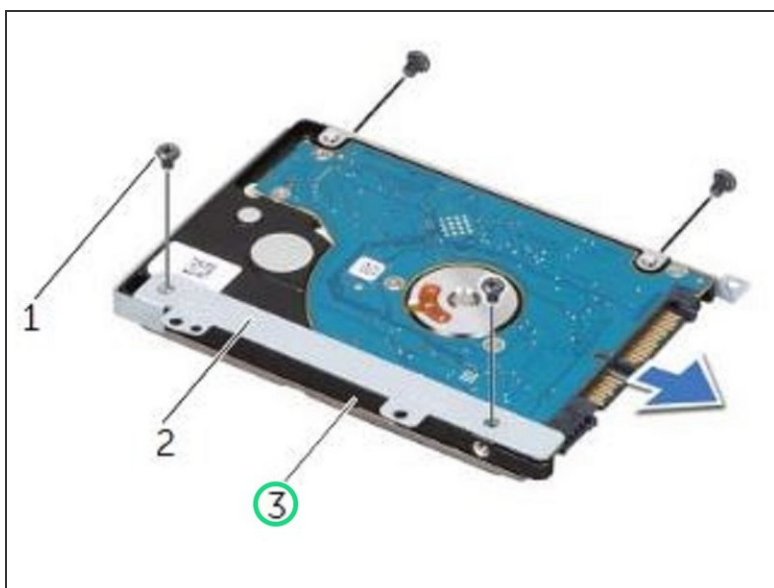
- Pull the interposer to disconnect the hard-drive cable from the hard-drive.

Step 6 — Remove the Screws



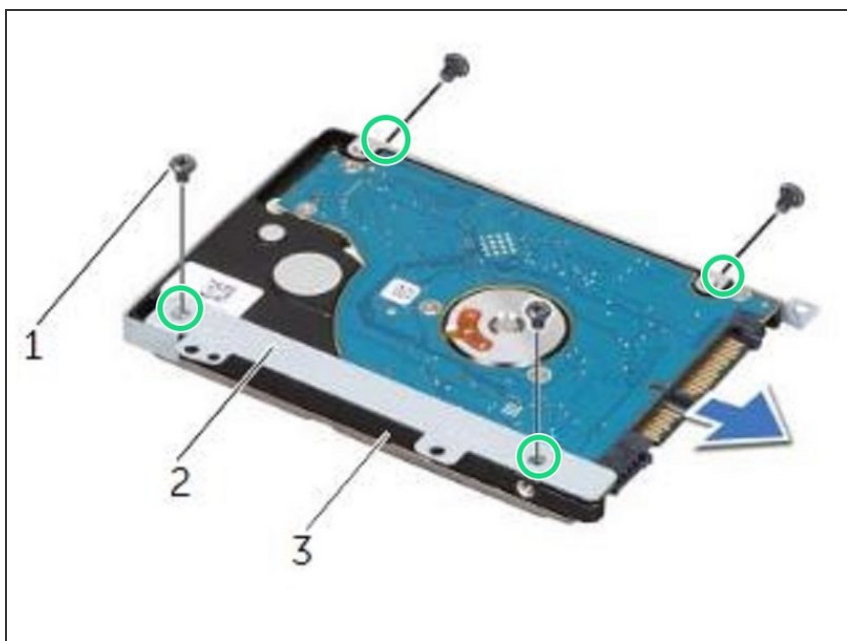
- Remove the screws that secure the hard-drive bracket to the hard drive.

Step 7 — Sliding the Hard Drive



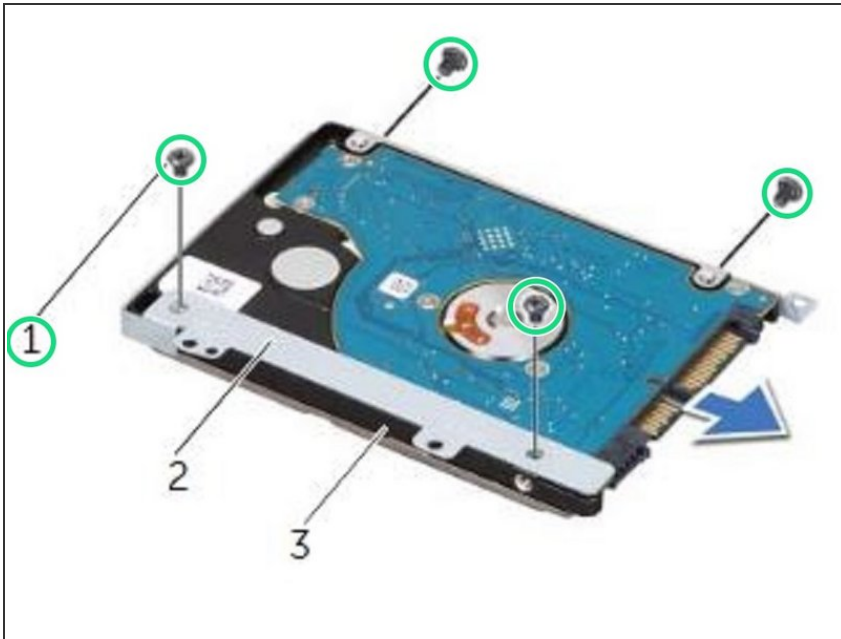
- Slide the hard-drive off the hard-drive bracket.

Step 8 — Align the Screw Holes



- Align the screw holes on the hard-drive bracket with the screw holes on the hard drive.

Step 9 — Replace the Screws



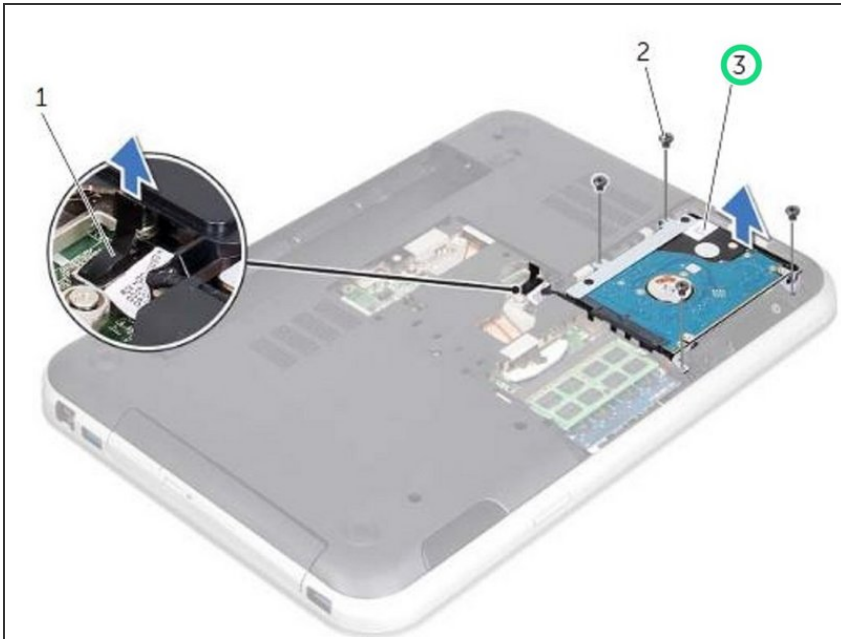
- Replace the screws that secure the hard-drive bracket to the **NEW** hard drive.

Step 10 — Connecting the Hard-Drive Cable



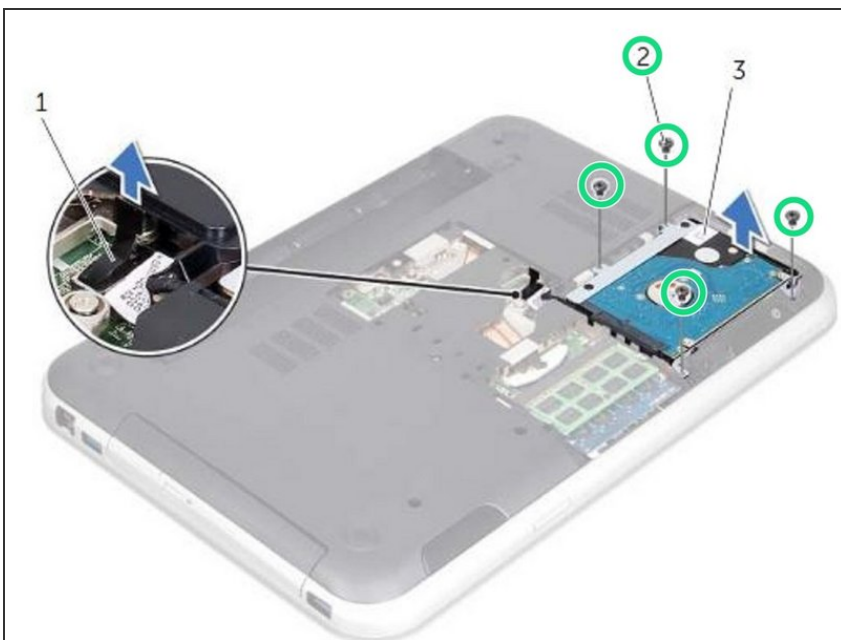
- Connect the hard-drive cable interposer to the hard drive.

Step 11 — Placing the Hard-Drive Assembly



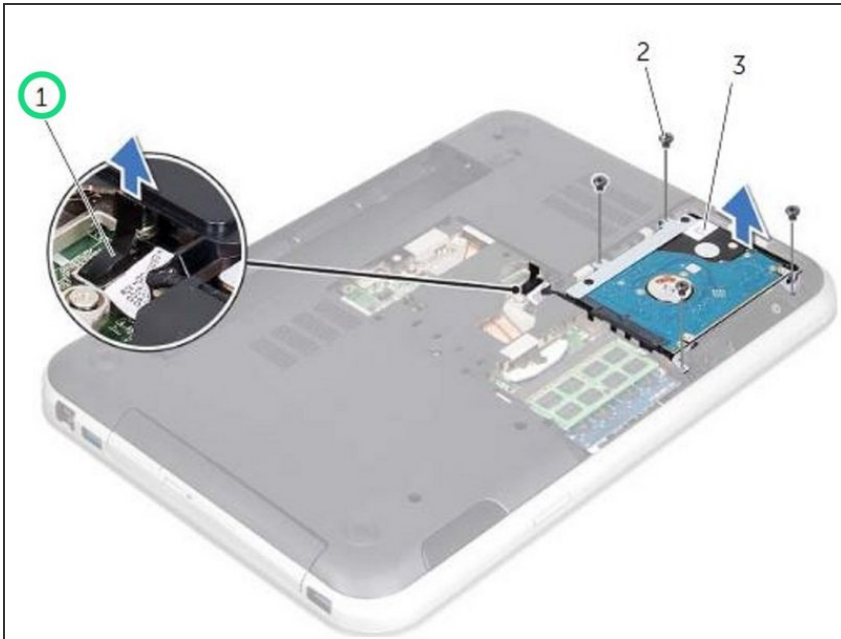
- Place the hard-drive assembly in the hard-drive bay on the computer base.

Step 12 — Replace the Screws



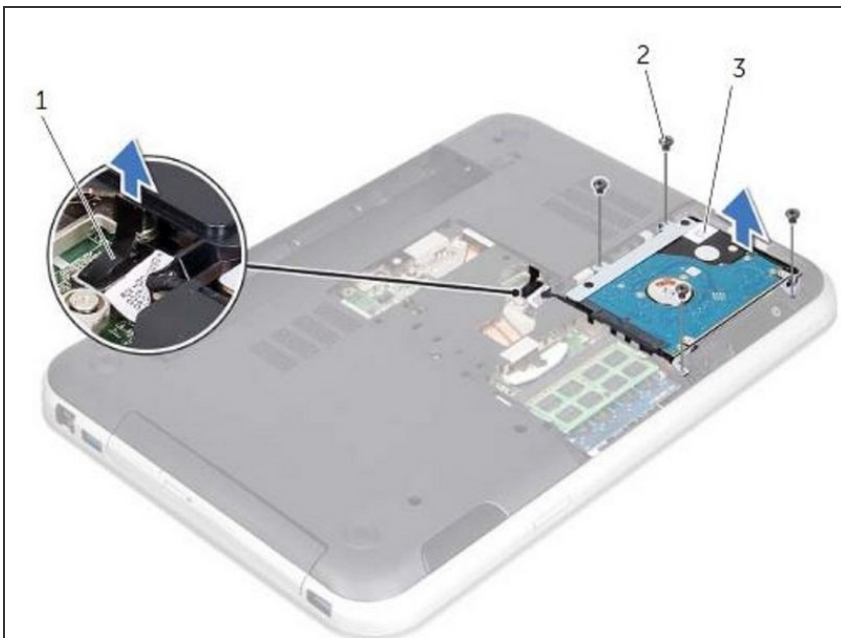
- Replace the screws that secure the hard-drive assembly to the computer base.

Step 13 — Routing the Hard Drive Cable



- Route the hard-drive cable through the routing guides on the computer base.

Step 14 — Connecting the Hard Drive Cable



- Connect the hard-drive cable to the system-board connector.