



Toshiba Satellite C55-A5302 Screen Replacement

This guide will help you replace the screen on the toshiba satellite c55-A5302.

Written By: Nicole Hague



INTRODUCTION

This guide will show you how to disassemble the parts necessary to remove and replace the screen.



TOOLS:

- [Phillips #0 Screwdriver](#) (1)
 - [Tweezers](#) (1)
-

Step 1 — Battery



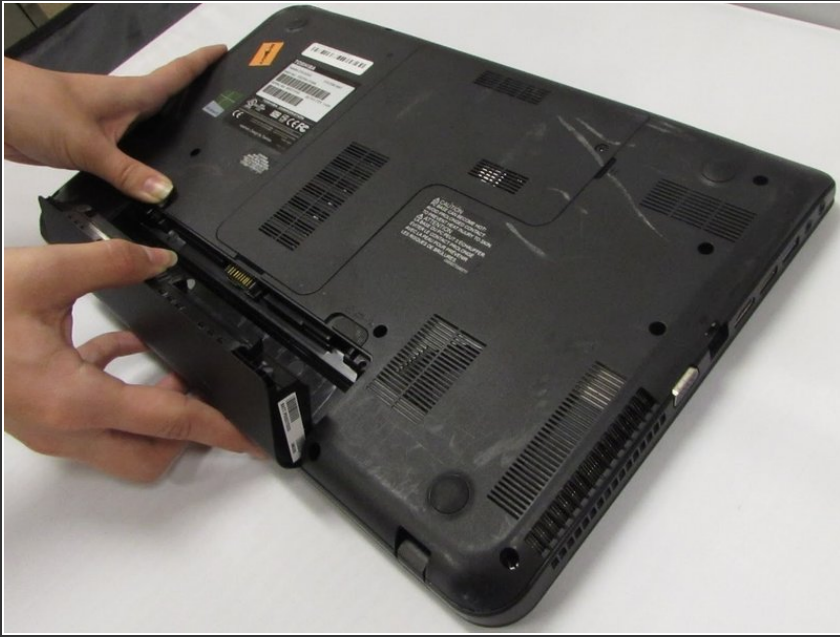
- Power down the laptop and remove all power cords. After this is done, turn the laptop over.

Step 2



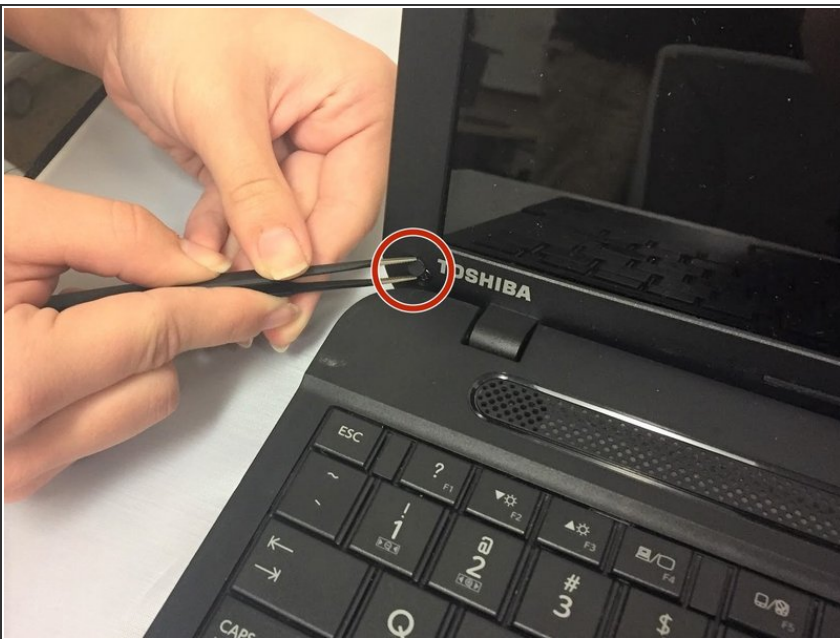
- Slide the battery latches outwards away from the center of the device.
- ⓘ The right latch will slide to the right, and left latch to the left.

Step 3



- Lift and remove the battery from the device.

Step 4 — Screen



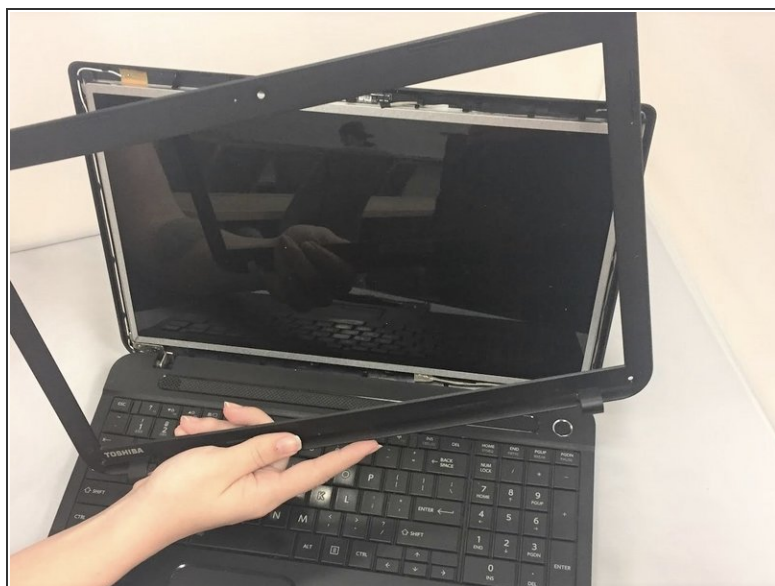
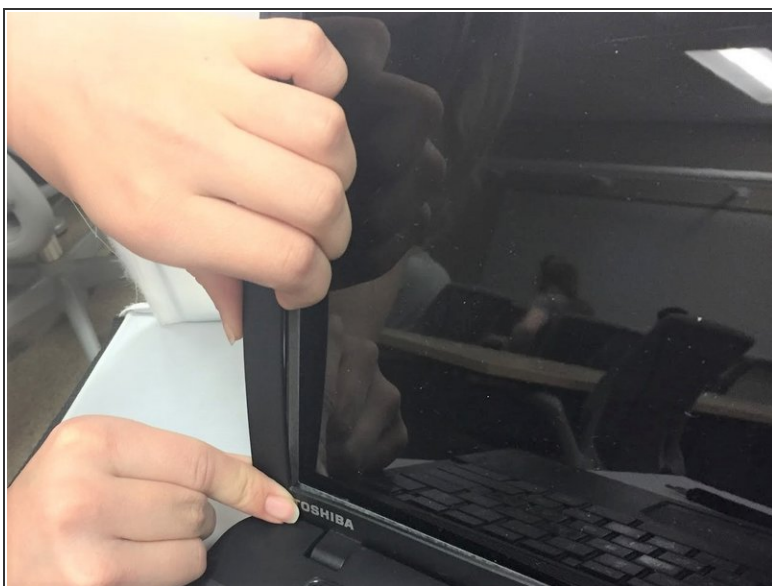
- Use tweezers to remove the screw covers in the lower corners of the screen.

Step 5



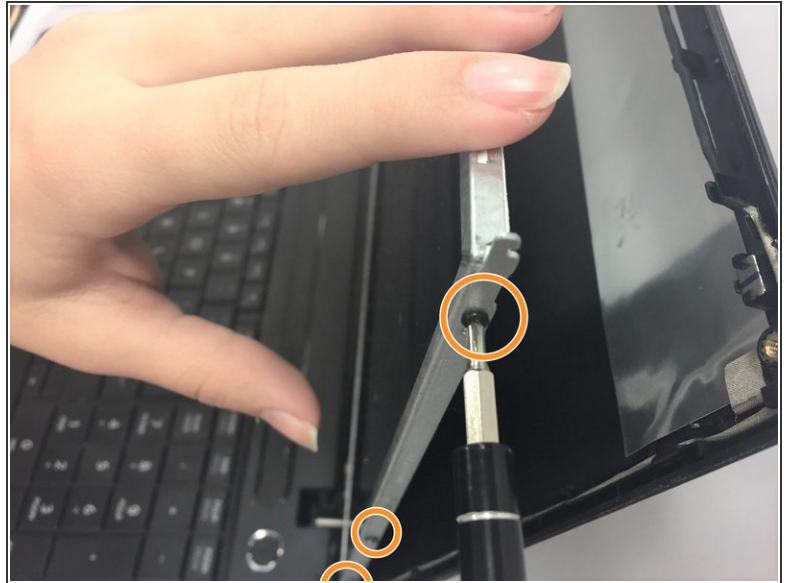
- Use the Phillips #1 screwdriver to unscrew the two screws in the lower corners of the screen.

Step 6



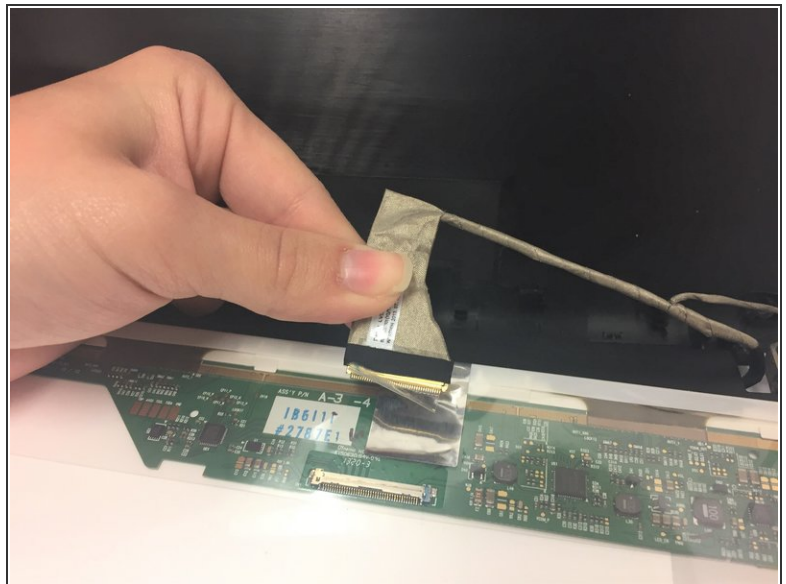
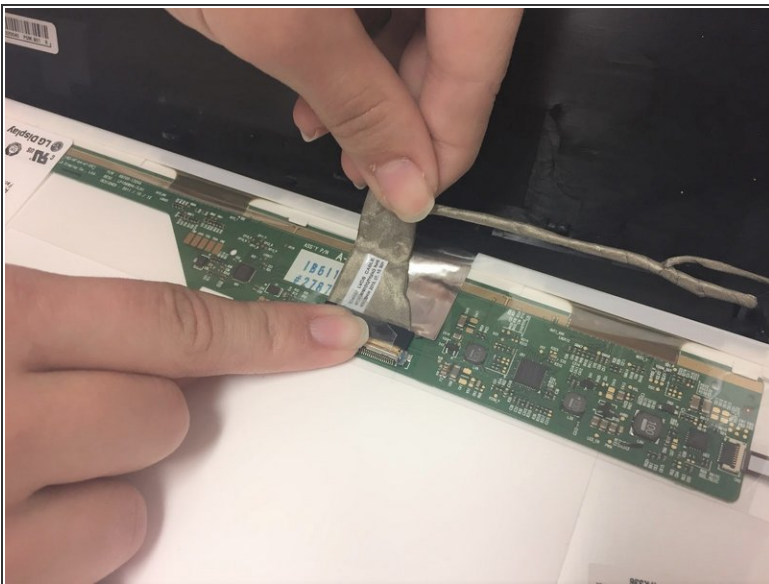
- Start popping off the cover all the way around the screen until it comes off.

Step 7



- Remove the two screws in the top corners with a Phillips #1 screwdriver. The screen will pop forward after removing the two screws.
- Using the same Phillips #1 screwdriver, remove the three screws on the side of screen frame.

Step 8



- On the back of screen, lift up the plastic film and screen connector. Pop out the connector, and gently remove the screen.

To reassemble your device, follow these instructions in reverse order.