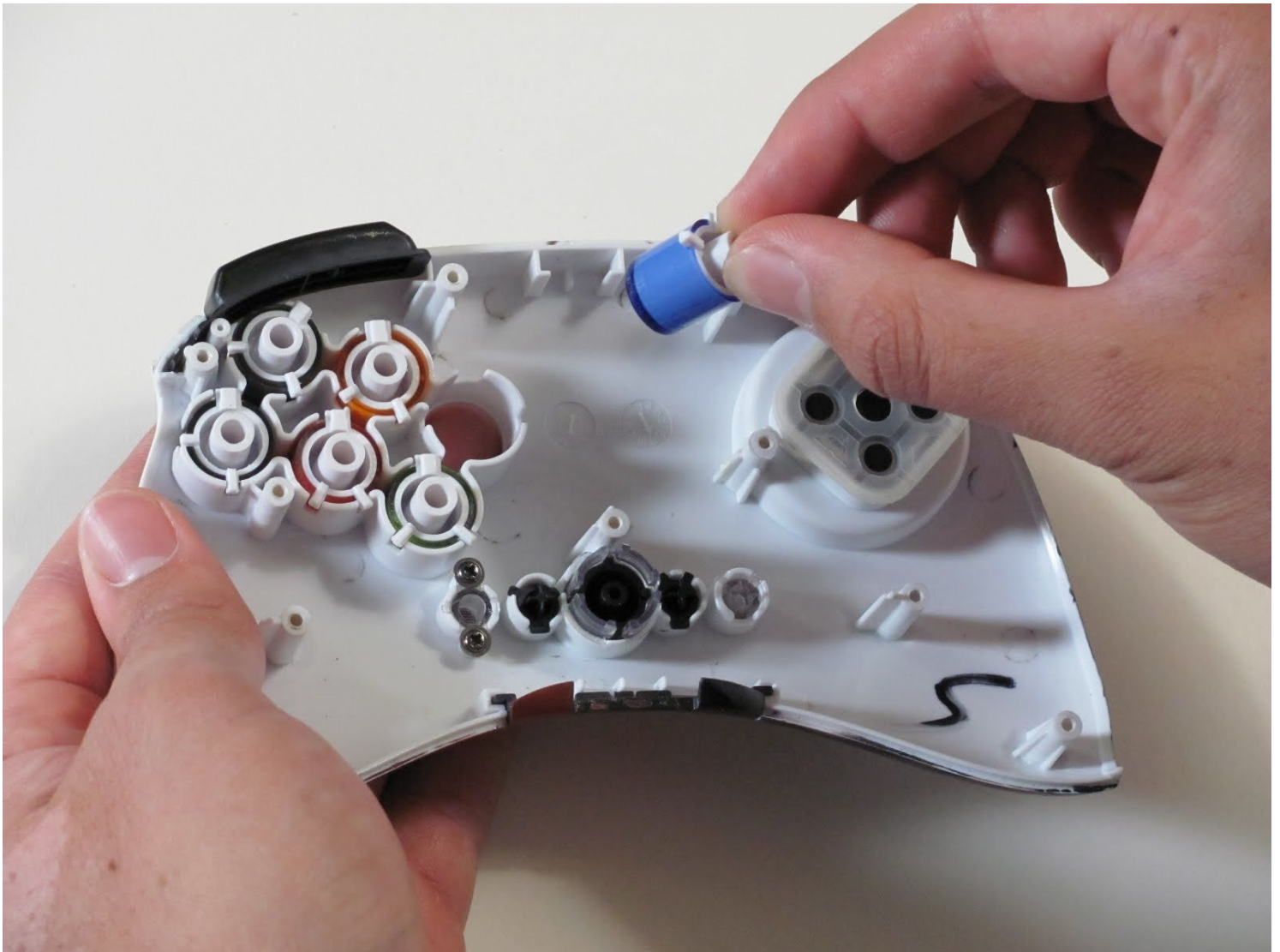




Mad Catz Street Fighter IV FightPad Buttons Replacement

Use this as a guide to remove or replace the...

Written By: Eric



INTRODUCTION

Use this as a guide to remove or replace the controller's face buttons and shoulder buttons.

TOOLS:

[Tweezers](#) (1)

[Phillips #00 Screwdriver](#) (1)

[iFixit Opening Tool](#) (1)

Step 1 — Rear and Side Case



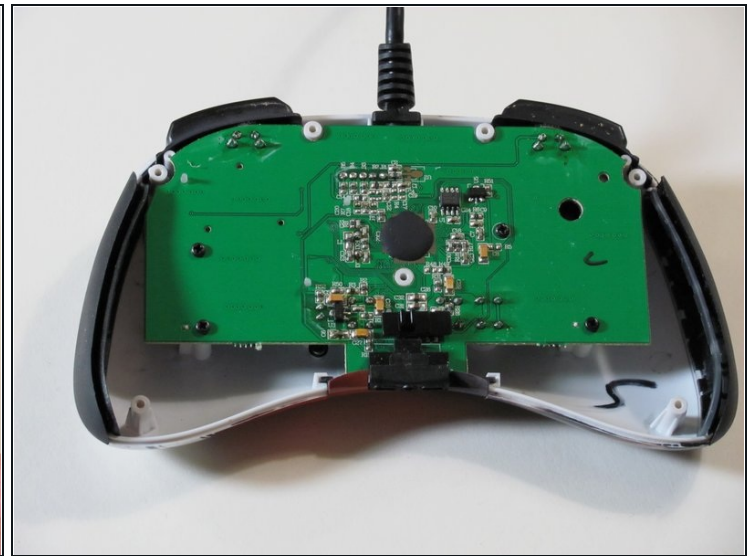
- Use [tweezers](#) to completely remove the sticker from the rear of controller.

Step 2



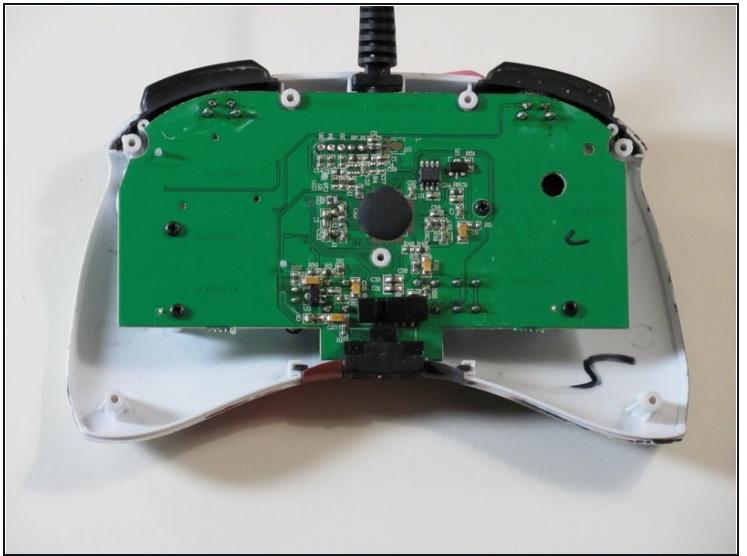
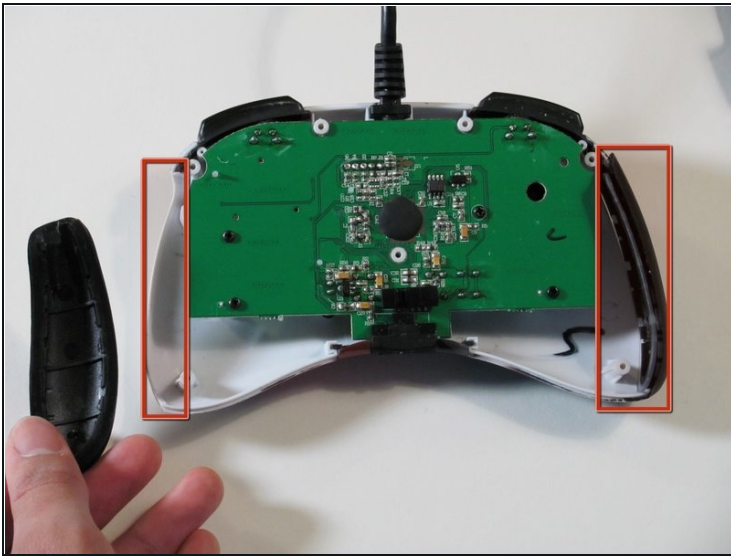
- Find the seven 8.3 mm Phillips screws on the rear of the controller and remove them.

Step 3



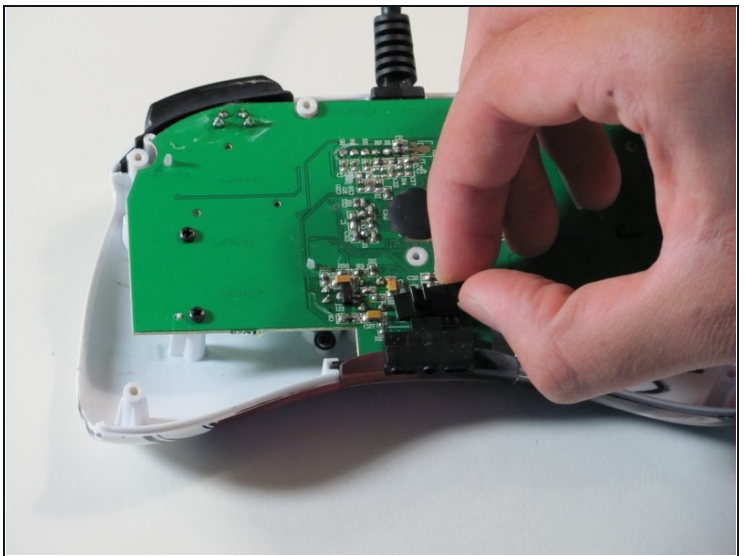
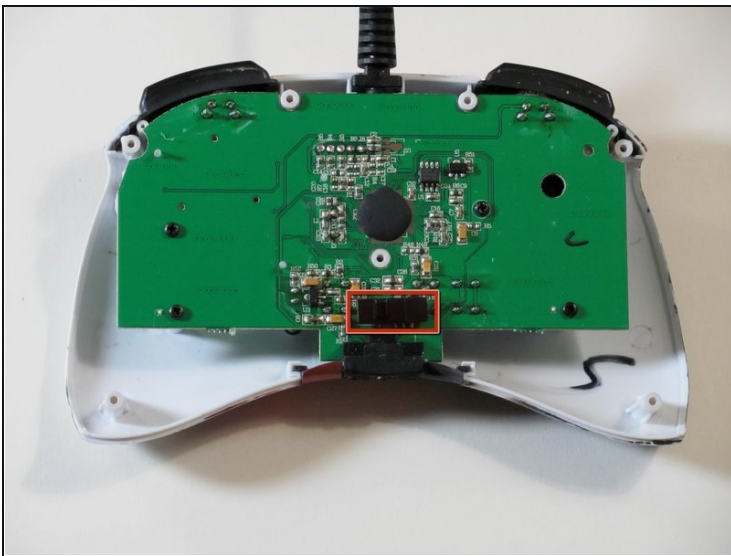
- Use a plastic opening tool to separate the rear and front casing by inserting it in-between the two cases.
- Use the plastic opening tool to pry the two cases apart.

Step 4



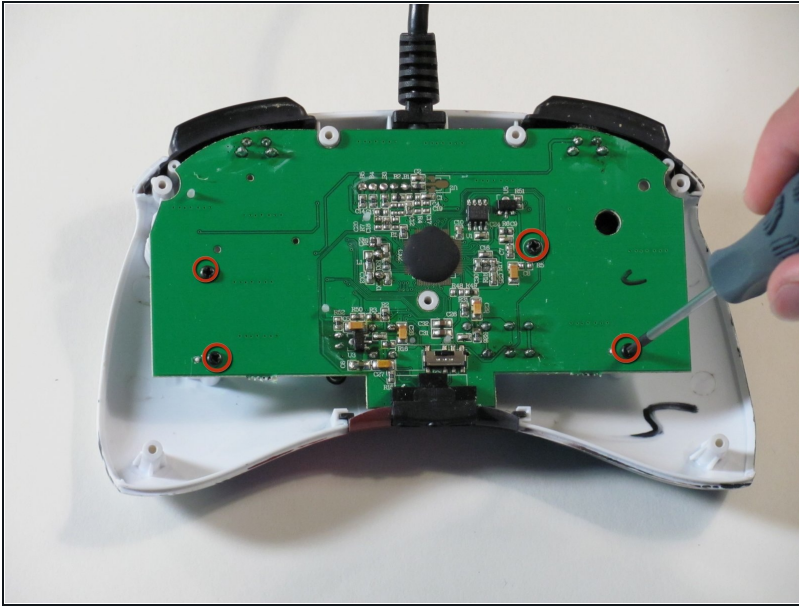
- Remove the two rubber side grips.

Step 5 — RS-DP-LS Switch



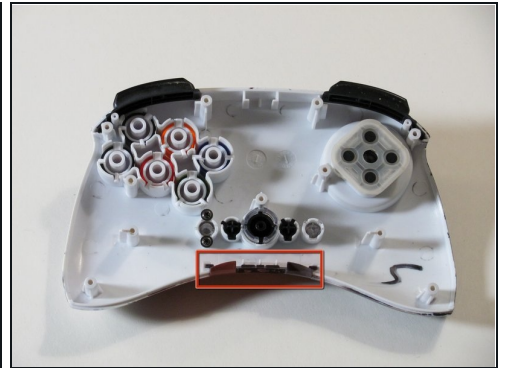
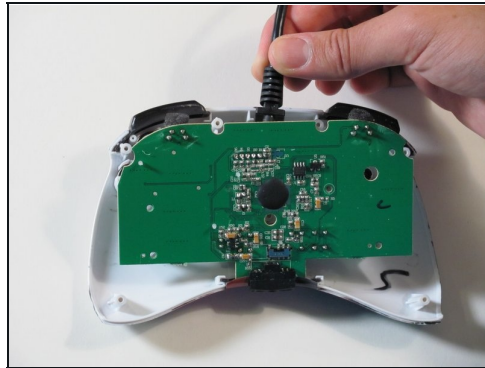
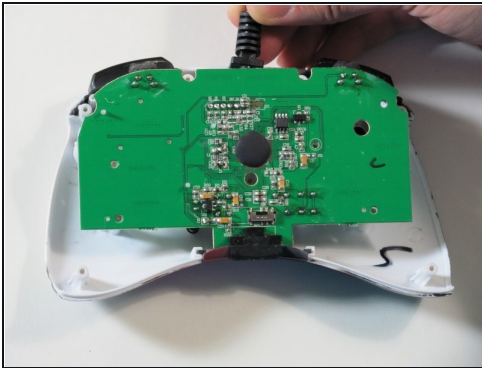
- Locate RS-DP-LS switch.
- Pull upwards on the switch to remove it.

Step 6 — Circuit Board



- Locate the four 8.3 mm Phillips screws on the circuit board and remove them.

Step 7

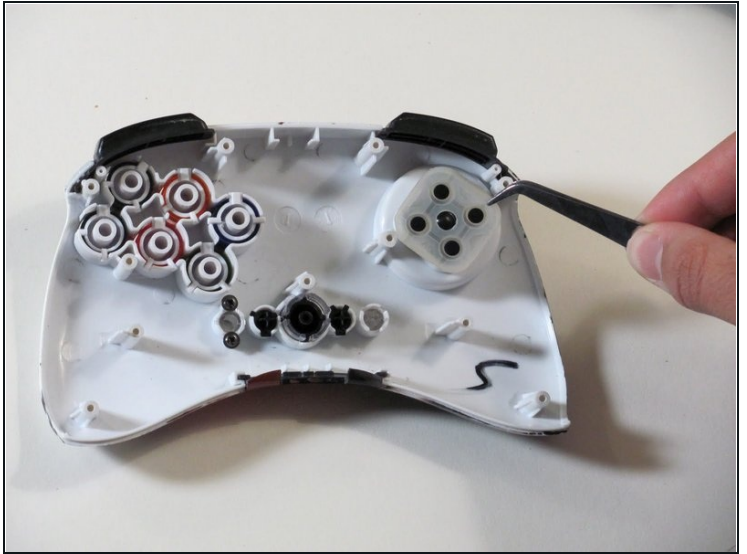


- Hold the controller cable at the area just before it meets the controller and slowly lift upwards to slide it out of its plastic slot and remove the circuit board.

⚠ Be careful with the wires connected to the circuit board itself as they are thin and delicate.

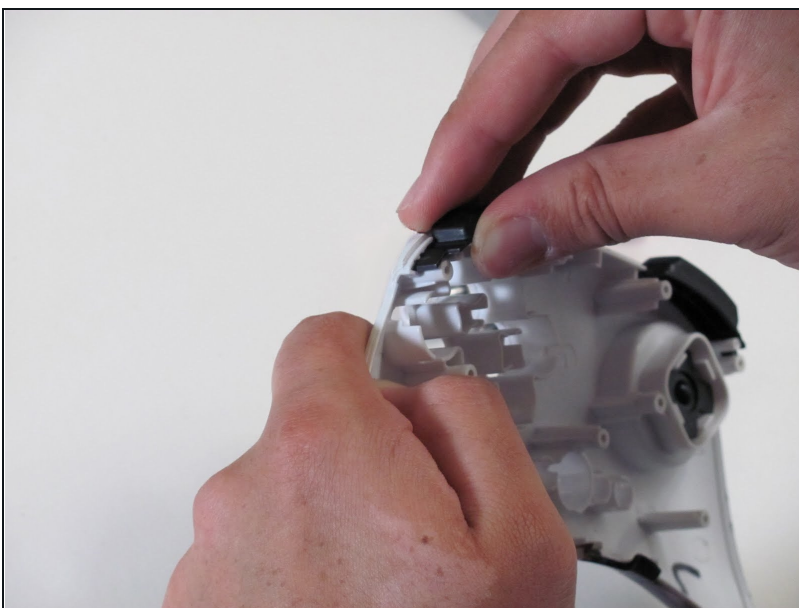
- ☑ When reassembling the controller, make sure that the bottom plastic piece is fully inserted into its slot before replacing the circuit board.

Step 8 — Buttons



- Remove the six buttons one by one by gripping the back of each one and pushing on them from the front.
- Use [tweezers](#) to remove the rubber part of the directional pad before you try to remove the shoulder buttons.
- ☒ When reinserting the buttons make sure they are in the correct place and oriented correctly.

Step 9



- Remove the left and right shoulder buttons by sliding them out of their respective slots.

To reassemble your device, follow these instructions in reverse order.