



# Samsung Radiant360 R3 Motherboard Replacement

Replace or remove the motherboard of the Samsung Radiant360 R3 speaker.

Written By: Fadi Alzammar



---

## INTRODUCTION

This guide will take you through the process of removing the bottom of the speaker, separating the shell of the enclosure, and accessing the motherboard for removal.

---

### TOOLS:

- [Spudger](#) (1)
  - [Tweezers](#) (1)
  - [Phillips #1 Screwdriver](#) (1)
-

## Step 1 — Wireless Setup Button and USB Module



- Flip the device so that the bottom of the device is facing you. Remove these feet with a pair of tweezers.
- Remove the four 10mm long screws with the Phillips #1 screwdriver.

## Step 2



- Remove the bottom shell from the speaker.



### Step 3



- Remove the connector from the board by pressing down on the center tab while nudging the connector away with a spudger.

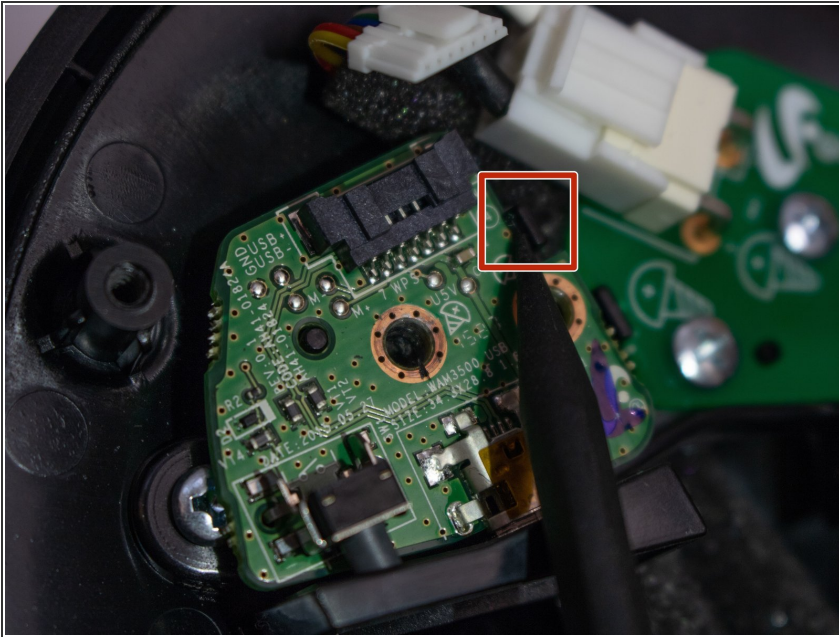
⚠ Be careful not to pull directly on the wires or apply too much pressure, or you risk breaking the connector.

### Step 4



- Remove the two 10mm long screws from the board utilizing the Phillips #1 screwdriver.

## Step 5



- Use a spudger to press the plastic tab away from the board until the board pops up.
- Remove the board with the USB module from the device.

## Step 6 — Wireless Module



- Remove the two 12mm long screws with the Phillips #1 screwdriver.
- Unplug white plug connected to the green circuit board.



## Step 7



- Remove the four 12mm long screws with the Phillips #1 screwdriver.
- Remove the cover, and slide the cord through the hole.

## Step 8



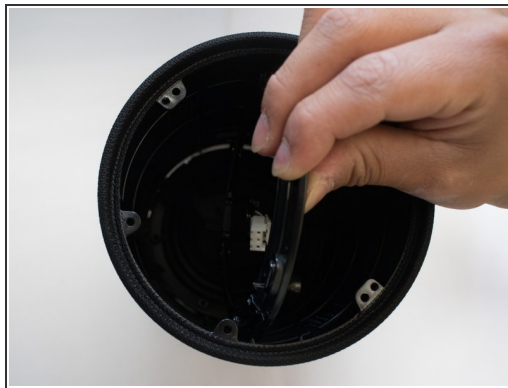
- Remove rubber covers covering the screws with pair of tweezers.
- Remove the six 12mm screws that are under the rubber covers with the Phillips #1 screwdriver.

## Step 9



- Remove the unscrewed cover as much as possible.
- ⓘ It is very difficult to get plugs at the end of the cord through the cover without breaking, so just slide to the edge.

## Step 10



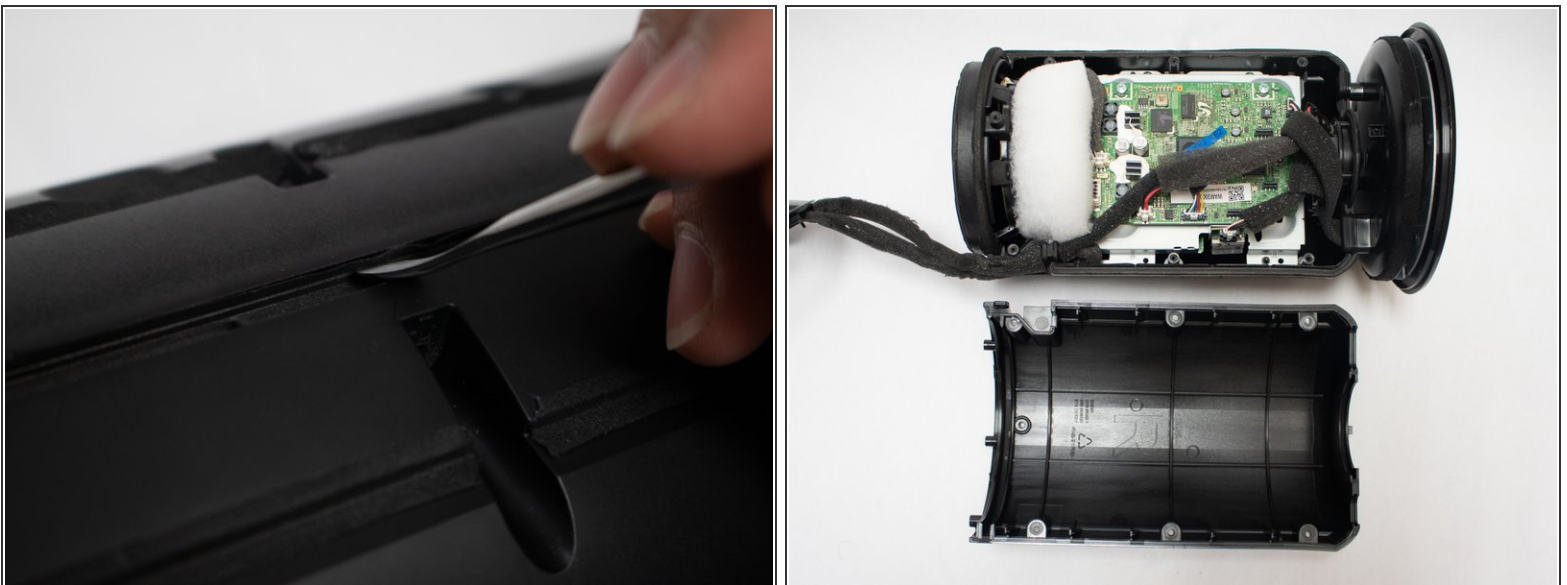
- Push the body out through the outer shell of device.
- ⓘ Carefully push the ring attached to the cable through the shell.

## Step 11



- Remove the eight 12mm long screws around the body with the Phillips #1 screwdriver.

## Step 12



- Pry the two halves of the body open using a metal spudger.

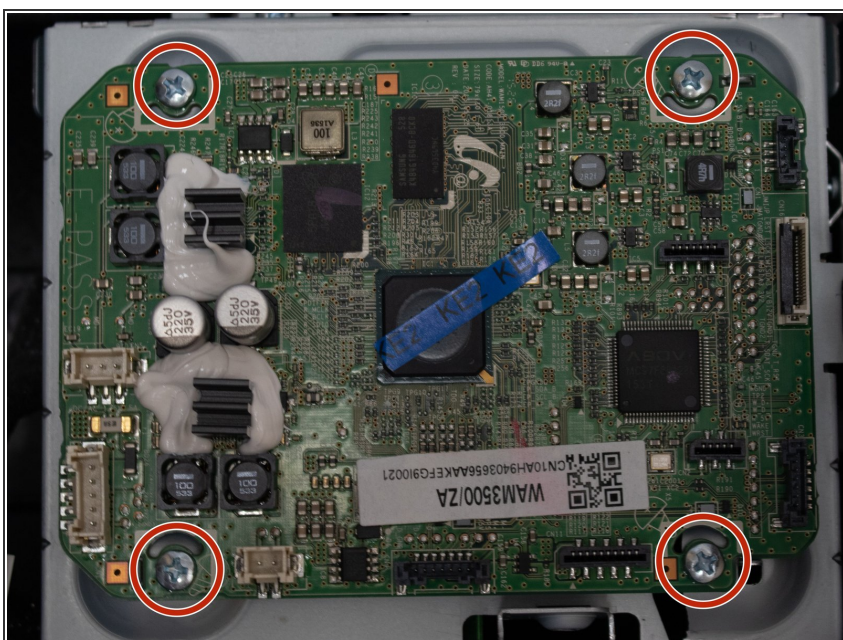


## Step 13



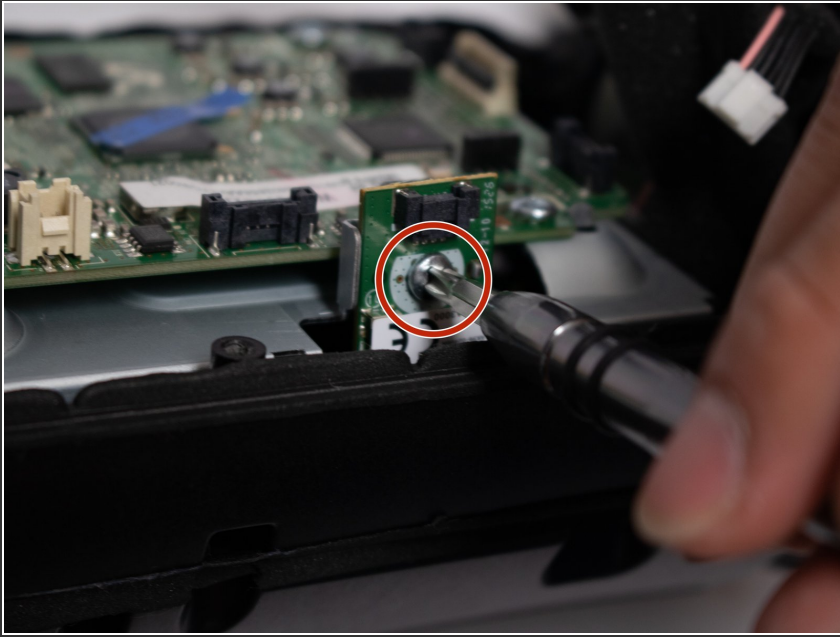
- Remove the plugs located topmost right and closest to the bottom in picture.

## Step 14



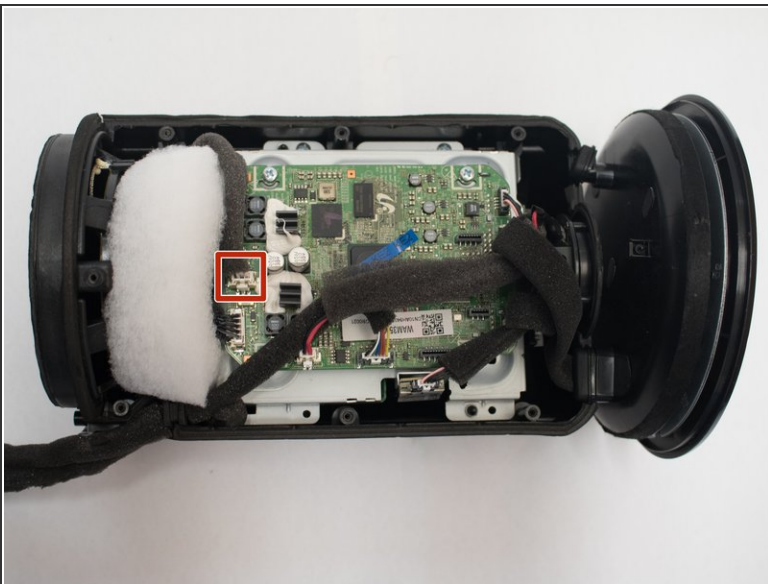
- Remove the four 12mm long screws with the Phillips #1 screwdriver .

## Step 15



- Unscrew the four 8mm screws on the side of the motherboard with the Phillips #1 screwdriver .
- Remove the Wireless Module from the device.

## Step 16 — Subwoofer



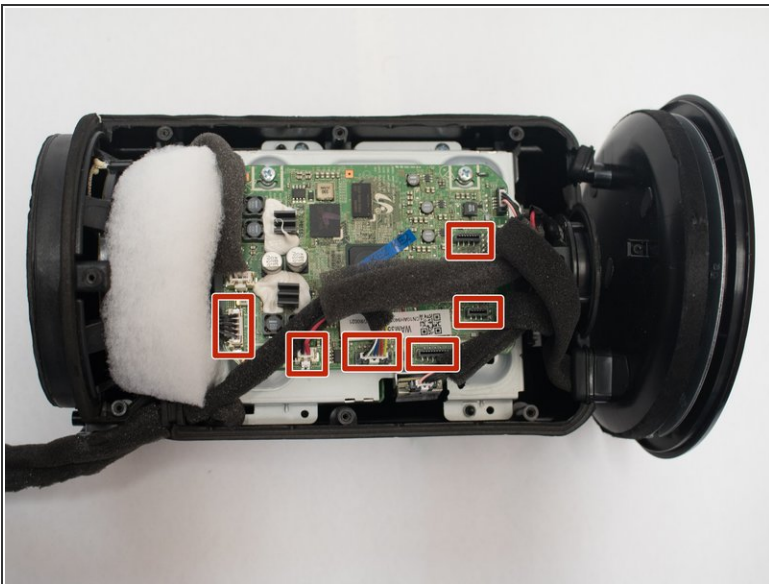
- Disconnect the plug in the device.

## Step 17



- Slide the subwoofer out of the speaker.

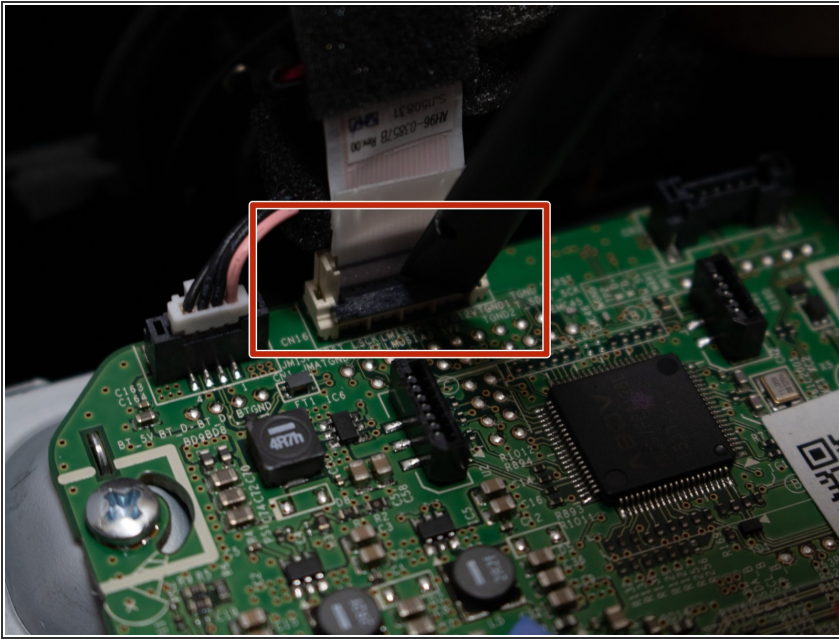
## Step 18 — Motherboard



- Disconnect the six plugs on the motherboard.

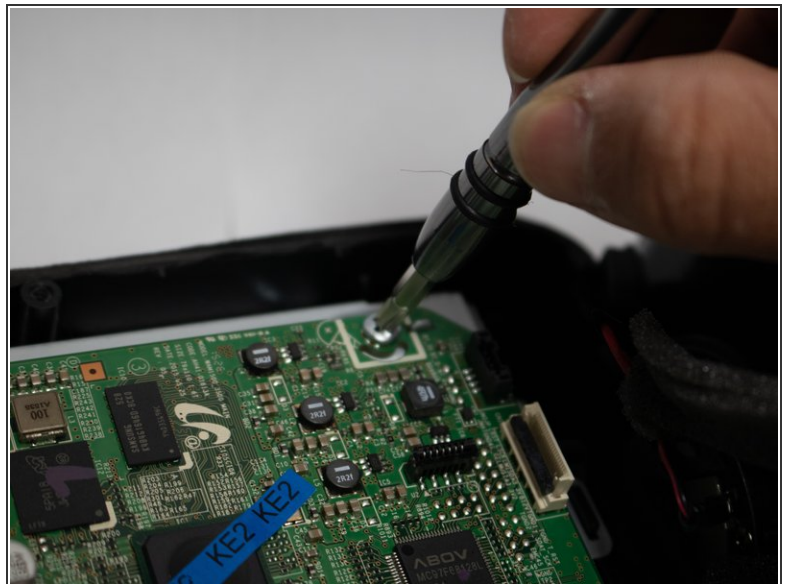
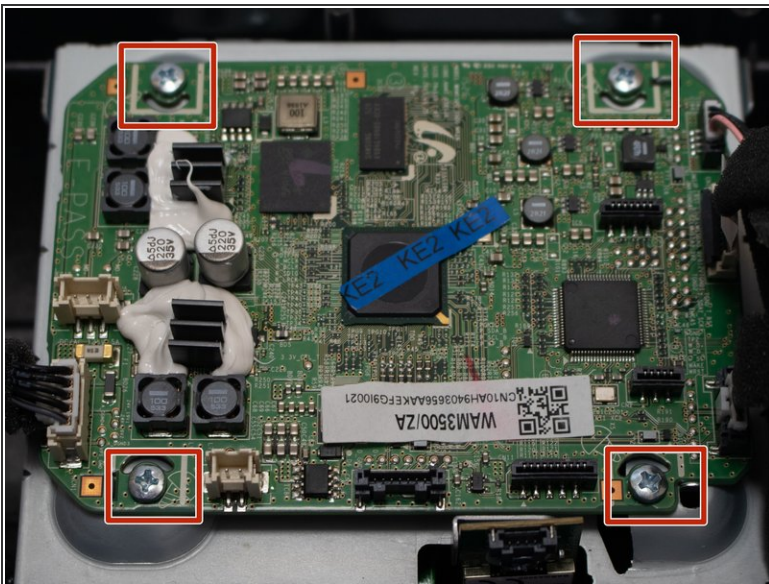


## Step 19



- Remove the ZIF cable.
- Pull up the tab with a spudger, and lift the cable.

## Step 20



- Remove the four 12mm screws with the Phillips #1 screwdriver .
- Remove the motherboard from the device.

To reassemble your device, follow these instructions in reverse order.