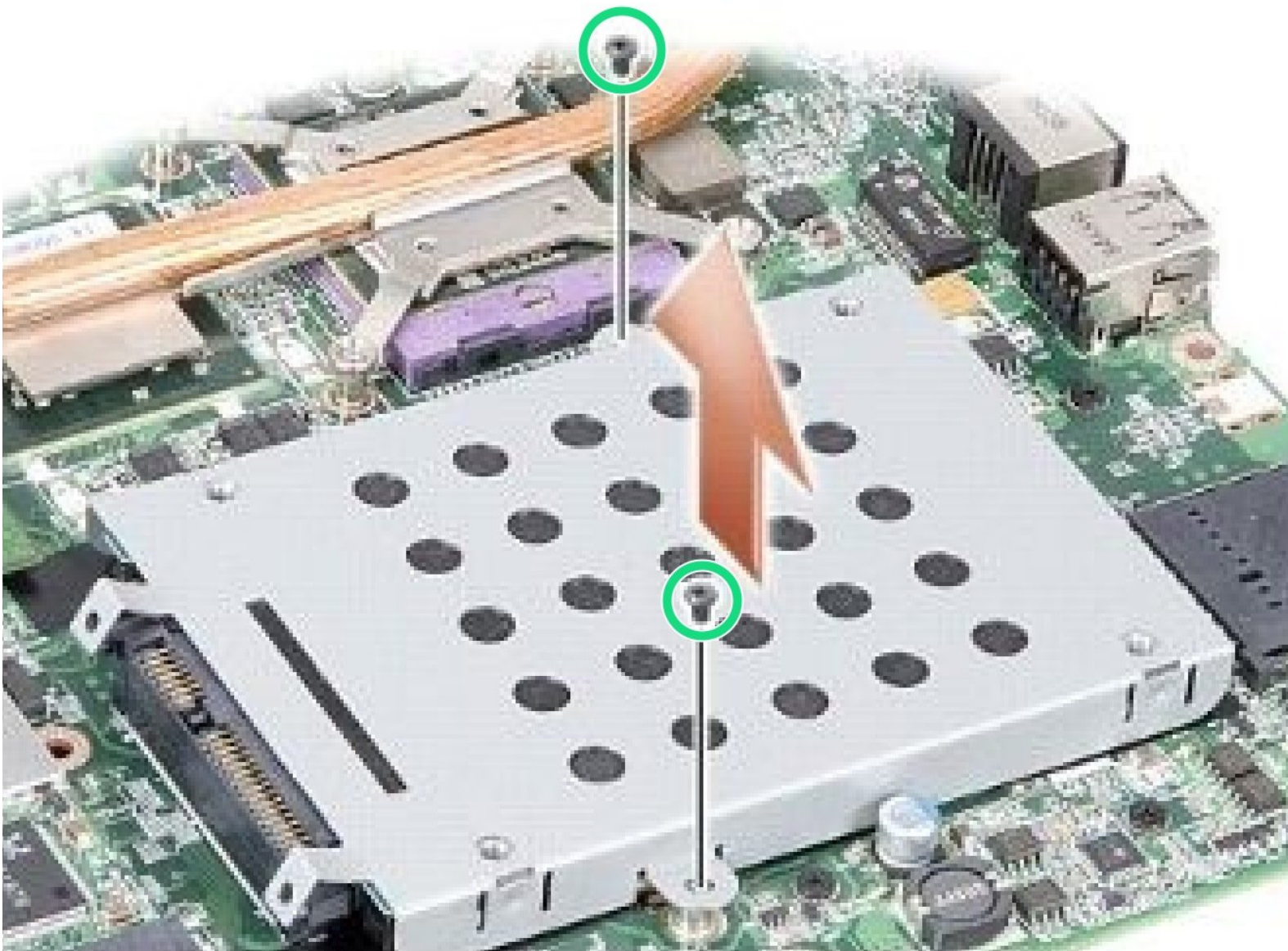




Dell Inspiron 1410 Hard Drive Replacement

Written By: Terrence15



INTRODUCTION

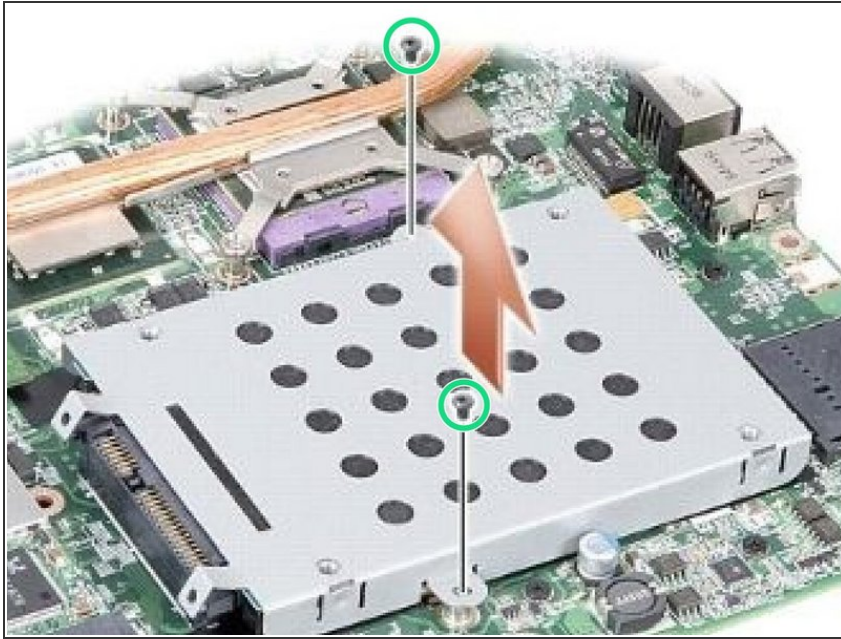
In this guide, we will show you how to remove and replace the Hard Drive.



TOOLS:

- [Phillips #0 Screwdriver](#) (1)
-

Step 1 — Remove the Screws

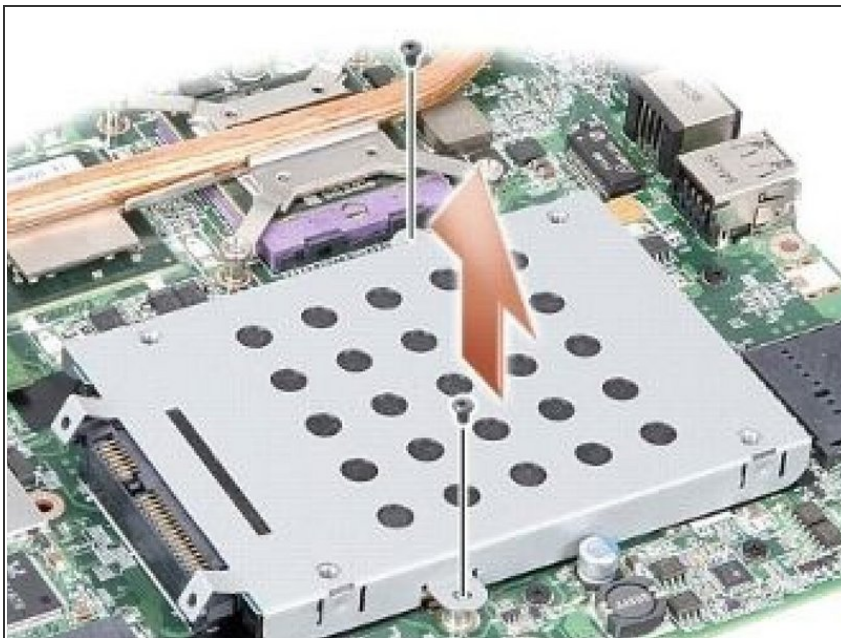


CAUTION: Before working inside your computer, read the safety information that shipped with your computer. Follow the procedures in [Before You Begin](#).

CAUTION: If you remove the hard drive from the computer when the drive is hot, do not touch the metal housing of the hard drive.

- Remove the two screws securing the hard drive assembly to the system board.

Step 2 — Removing the Hard Drive Assembly



- Holding the connector end of the hard drive assembly, pull the hard drive assembly from the system board connector.

Step 3 — Removing the Hard Drive Cage



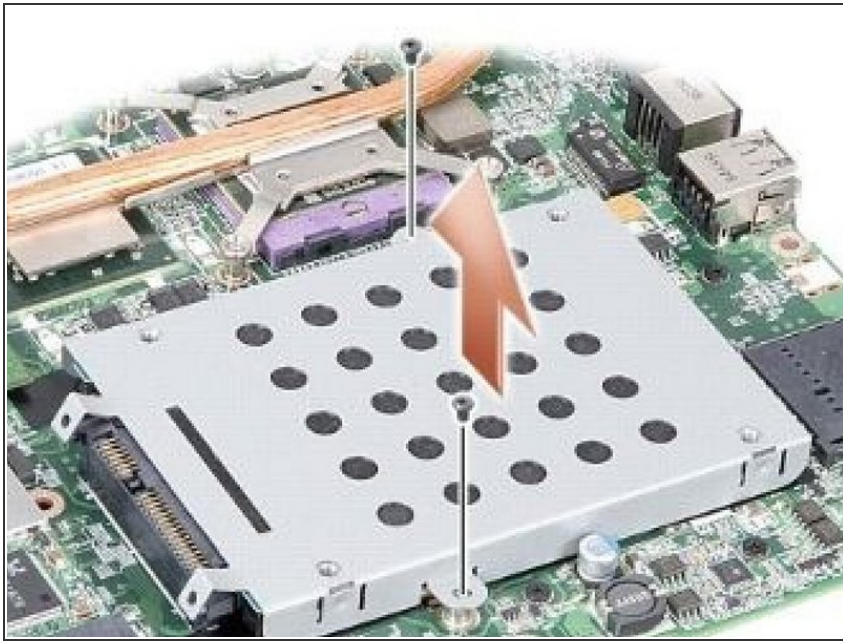
- Press down on the hard drive at the non-connector end slot to remove the hard drive off the hard drive cage.

Step 4 — Placing the Hard Drive



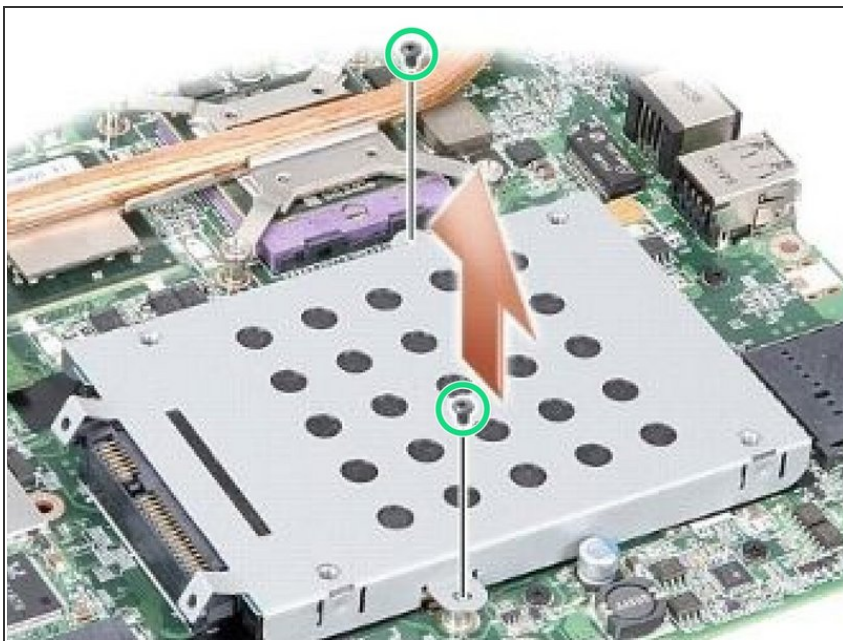
- Place the **NEW** hard drive in the hard drive cage and press it down until it snaps into place.

Step 5 — Aligning the Hard Drive



- Push down the hard drive assembly in place by aligning the hard drive connector with the system board connector.

Step 6 — Replace the Screws



- Replace the two screws securing the hard drive assembly to the system board.