



HP EliteBook 840 G5 Back Cover Replacement

Whether you need to access the internal...

Written By: Lucas Martos-Repath



INTRODUCTION

Whether you need to access the internal components of your HP Elitebook 840 G5 for further repairs, or you are just looking to replace the back plate of your laptop due to damage, please follow the step-by-step guide below to removing the back plate of your HP Elitebook 840 G5 safely and carefully. For reassembly, follow directions in reverse steps. The process required for many repairs or replacements on this product begin with the vital step of removing the back plate of the HP Elitebook 840 G5. Make sure to use extreme caution when completing this replacement; the internal electrical components of the laptop will be exposed!



TOOLS:

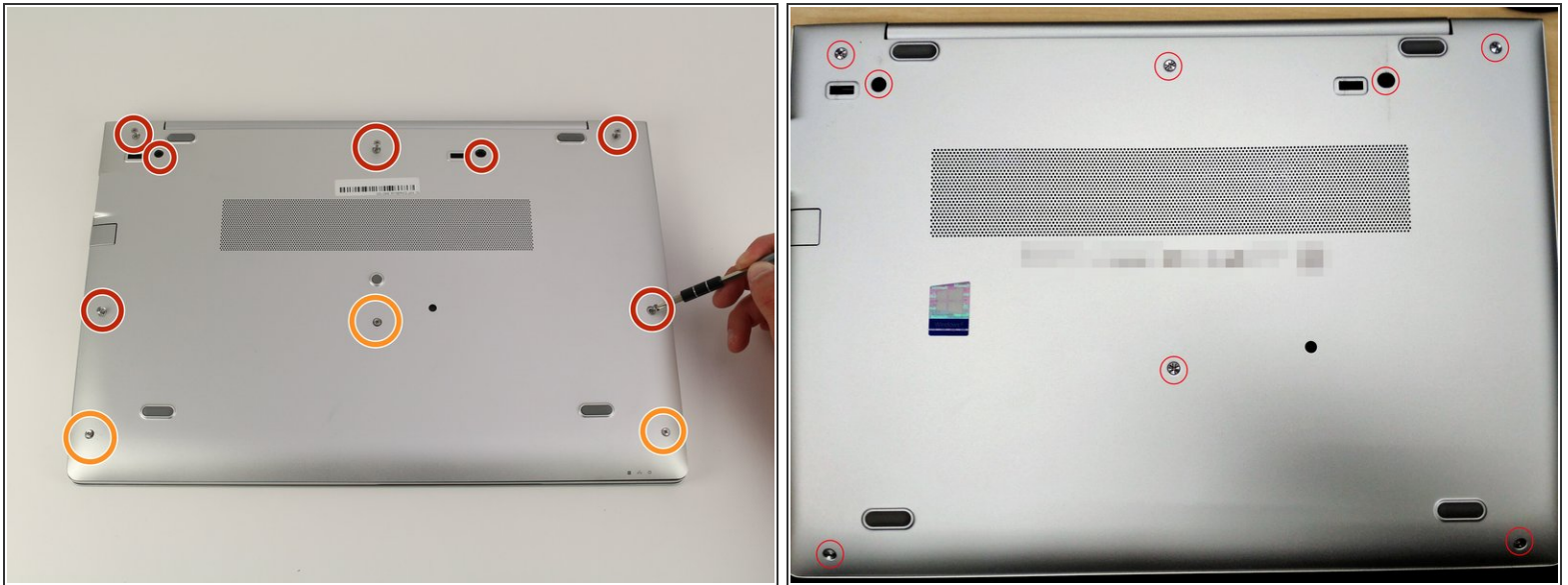
- [Phillips #1 Screwdriver](#) (1)
- [iFixit Opening Tool](#) (1)



PARTS:

- [HP EliteBook Lower Case - L14371-001](#) (1)


Step 1 — Back Cover



- Use a Phillips #1 screwdriver to undo the five screws. The top three screws are 10 mm and the two side screws are 7 mm.
- Unscrew the bottom three screws using the same screwdriver.
- ⓘ The bottom Phillips #1 screws don't remove from the back plate, but do need to be unscrewed.
- ⓘ Some models have a slightly different screw configuration, shown in the second photo.

Step 2



- Turn computer so that the hinged side is facing up.
 - Use the plastic opening tool to pry open the back plate.
 - Drag the plastic opening tool along the edge from left to right and use a second opening tool to pry open the top right corner.
 - Repeat the 3rd step for the other side.
 - Repeat on Left and Right sides of the system. There are two points in the middle (on the left and right sides of the center screw) that will release with slight lifting pressure.
-  You should be able to hear a pop when prying open the corners.

Step 3



- Grab the back plate and separate it slowly away from the device.
- ⓘ No wiring is connected to the back plate. Separate with caution, as there are electric components on the inside.

To reassemble your device, follow these instructions in reverse order. This step is critical, as it is the beginning of all guides to access the internal of the computer.