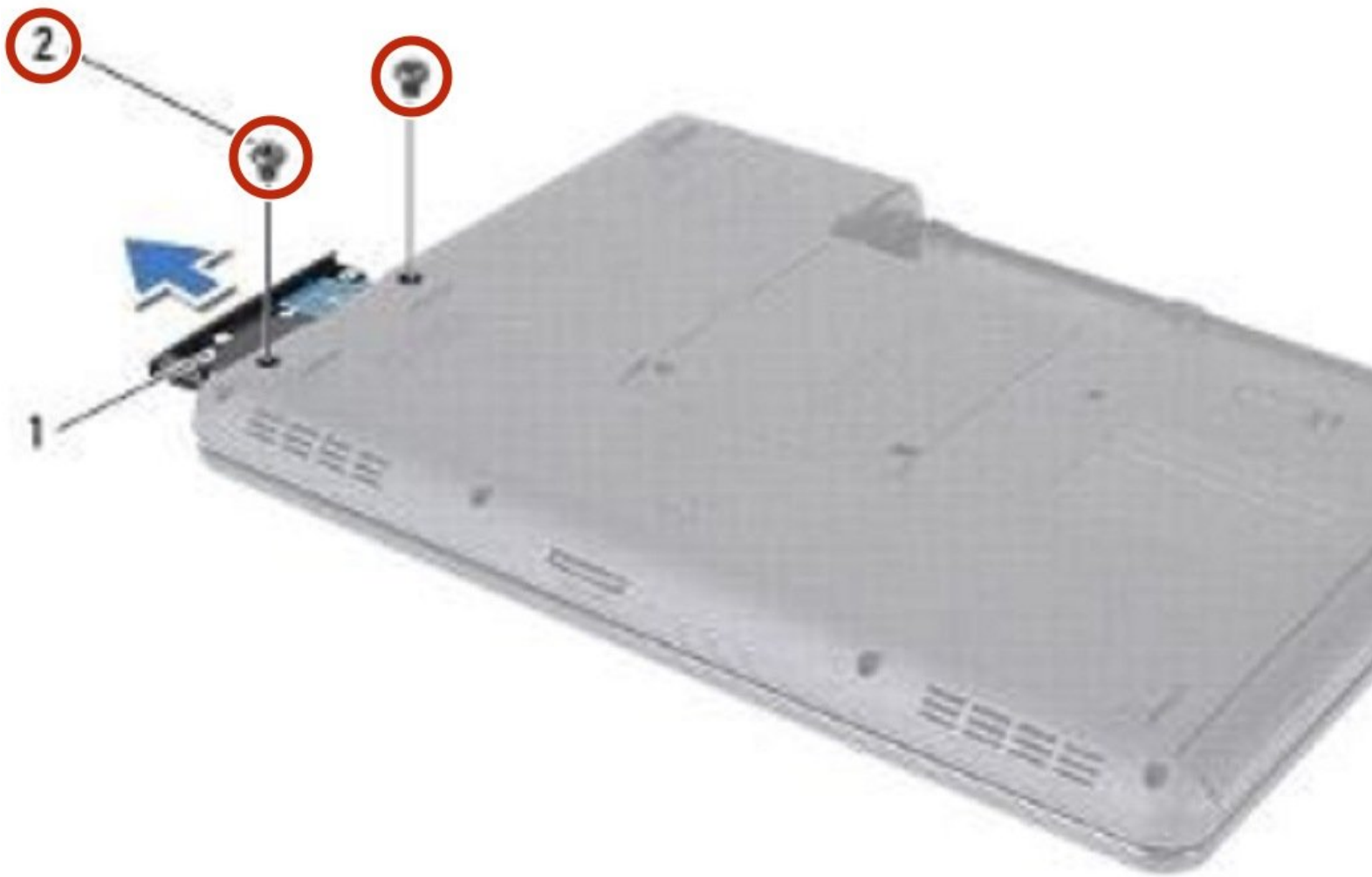




Dell Inspiron 14 N4020 Hard Drive Replacement

Written By: Terrence15



INTRODUCTION

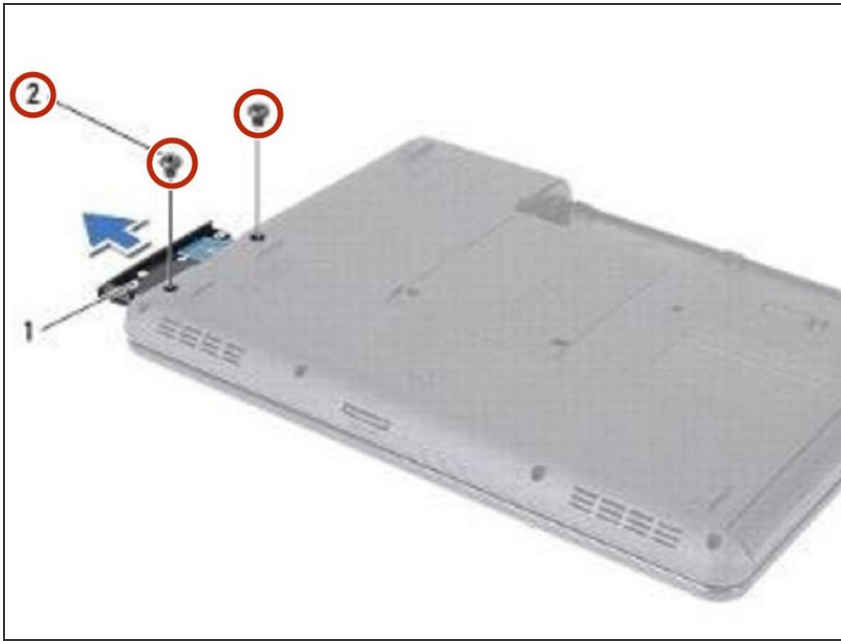
In this guide, we will show you how to remove and replace the Hard Drive.



TOOLS:

- [Phillips #0 Screwdriver](#) (1)
-

Step 1 — Remove the Screws



⚠ WARNING: Before working inside your computer, read the safety information that shipped with your computer. Follow the instructions in [Before You Begin](#).

⚠ CAUTION: To avoid electrostatic discharge, ground yourself by using a wrist grounding strap or by periodically touching an unpainted metal surface (such as a connector on your computer).

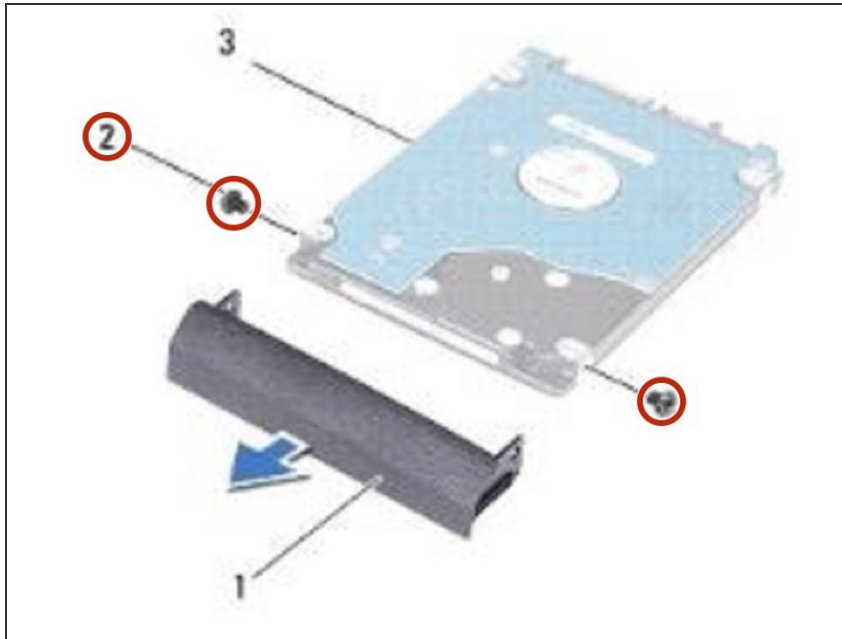
- Remove the two screws that secure the hard-drive assembly to the computer base.

Step 2 — Sliding the Hard-Drive Assembly



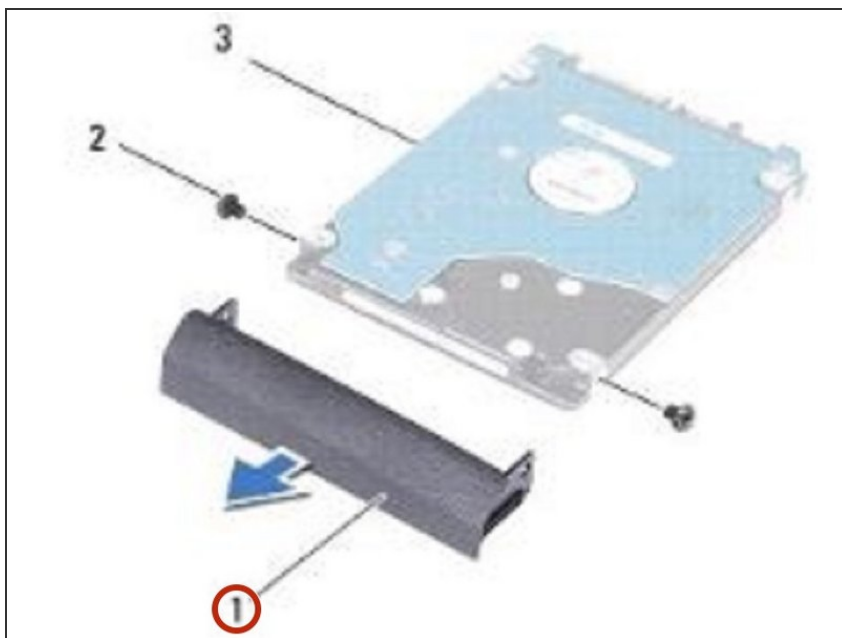
- Slide the hard-drive assembly out of the hard-drive compartment.

Step 3 — Remove the Screws



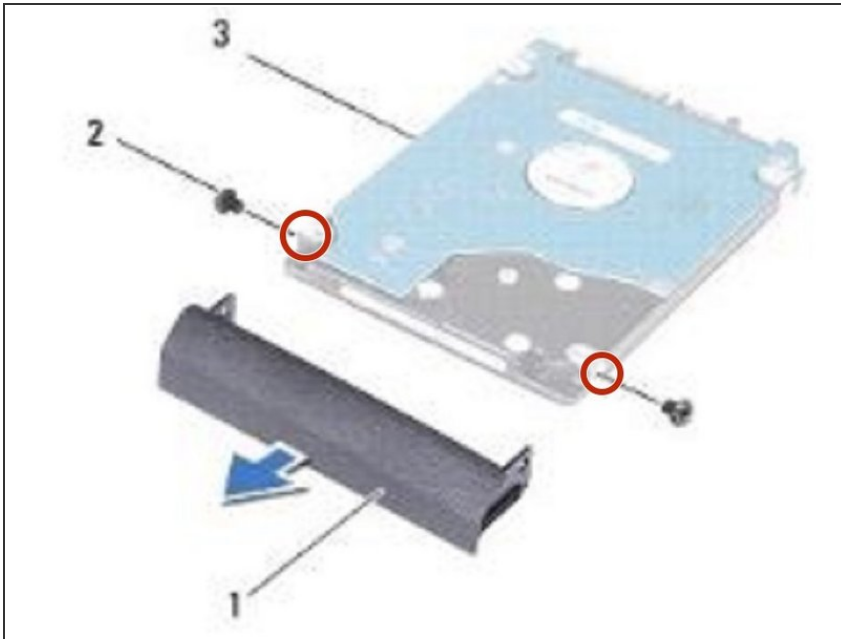
- Remove the two screws that secure the hard-drive bezel to the hard drive.

Step 4 — Removing the Hard Drive Bezel



- Pull the hard-drive bezel away from the hard drive.

Step 5 — Align the Screw Holes



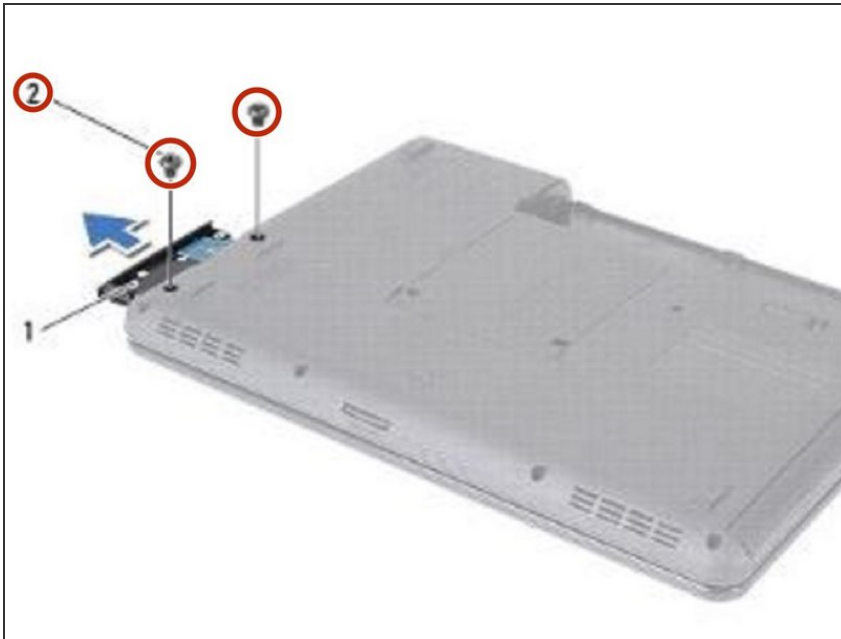
- Align the screw holes on the hard-drive bezel with the screw holes on the **NEW** hard drive and replace the two screws.

Step 6 — Sliding the Hard Drive Assembly



- Slide the hard-drive assembly into the hard-drive compartment until it is fully seated.

Step 7 — Replace the Screws



- Replace the two screws that secure the hard-drive assembly to the computer base.