



# LG env2 vx9100 Camera Replacement

This guide contains instructions for accessing and installing the camera.

Written By: Reed Williston



---

## INTRODUCTION

In this guide you will be removing the back panel to access the motherboard. Once you have reached the motherboard you will remove the camera lens from the motherboard.

---

### TOOLS:

- [Phillips #0 Screwdriver](#) (1)
  - [Spudger](#) (1)
-

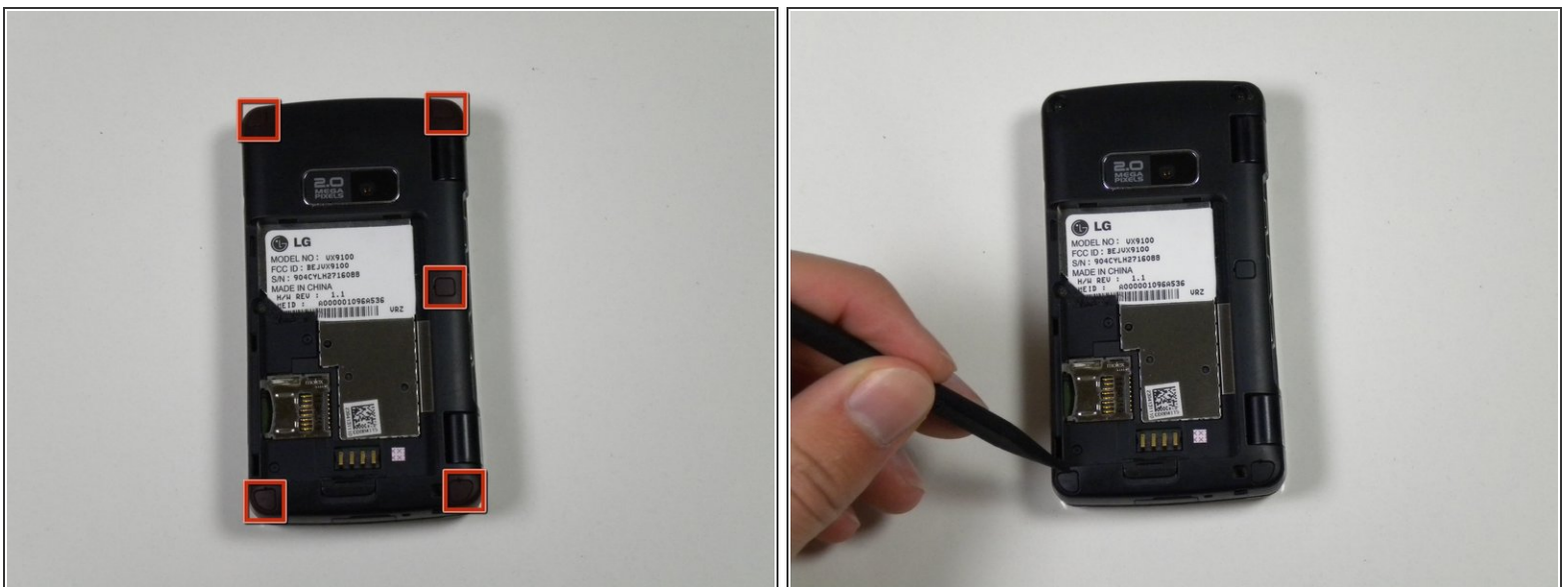
## Step 1 — Battery



**⚠ Before disassembling your phone, be sure it is powered off to avoid minor electric shock or possible fire.**

- Place the phone face down on the table.
- Use your fingernail or an opening tool to pull down the tab below the battery.
- Lift the battery out.

## Step 2 — Back Panel



- Locate the five rubber covers on the back panel of the phone.
- Use the metal probe to pop out each rubber cover to reveal the screws underneath.

## Step 3



- Locate the six 2.5mm screws on the back panel of the phone.
- Use a #00 Phillips screwdriver to remove each 2.5mm screw.

## Step 4



- Locate the seam around the edge of the phone.
- Insert the plastic opening tool into the seam and pry gently to release the tabs.
- Work your way around the phone until all tabs are released.
- Remove the back panel of the phone.

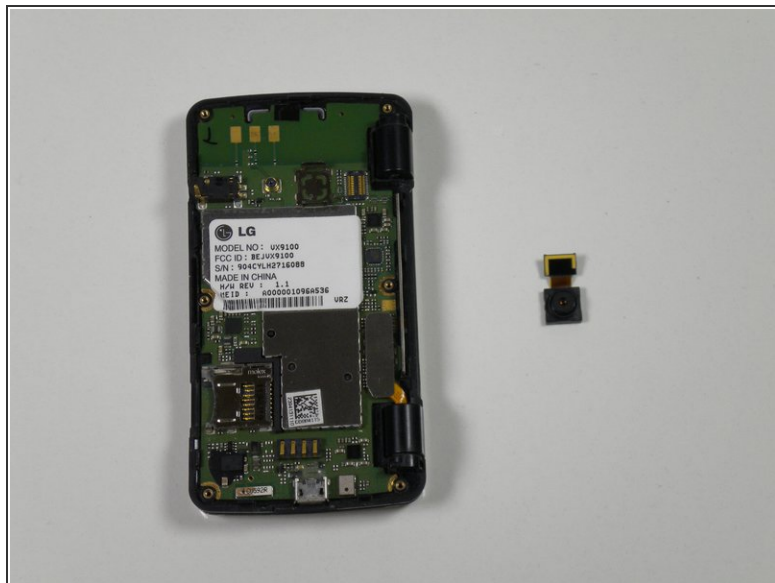


## Step 5 — Camera



- Locate the ribbon attached to the lens of the camera.
- Place the plastic opening tool in between the logic board and ribbon.
- Lift up the plastic opening to detach the ribbon from the logic board.

## Step 6



- Place the plastic opening tool in between the lens and the logic board.
- Detach the lens from the logic board using the plastic opening tool by popping it out.
- Take the entire lens and ribbon off of the logic board.

To reassemble your device, follow these instructions in reverse order.