



# Jam Voice Hard Mesh Cover Replacement

Remove or replace the top covering or hard speaker mesh of the Jam Voice.

Written By: Alexander Buck



---

## INTRODUCTION

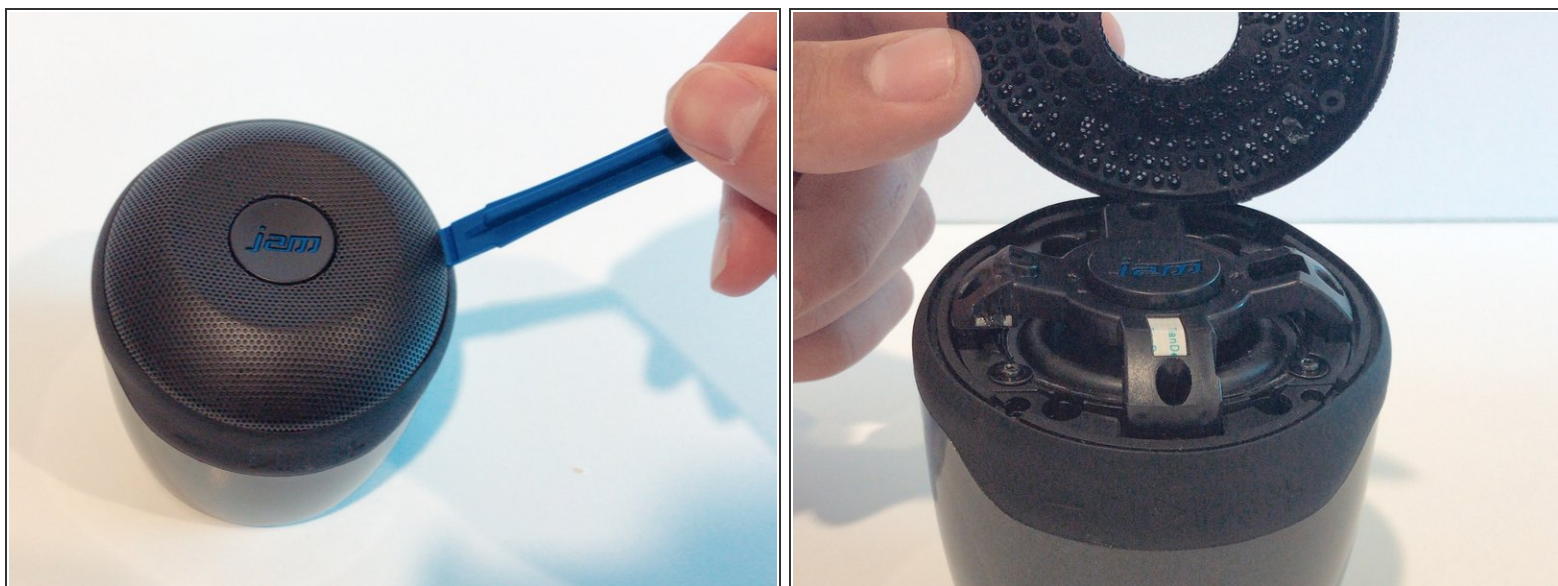
In order to gain access to the inside of the Jam Voice, the top cover must be removed. The top covering may be damaged and in need of replacement.



### TOOLS:

- [iFixit Opening Tool](#) (1)
-

## Step 1 — Hard Mesh Cover



- Insert the plastic opening tool underneath the mesh top.
- Pry the cover open.
- ☑ To reattach the cover, simply align the round posts on the bottom of the cover into the holes.

To reassemble your device, follow these instructions in reverse order.