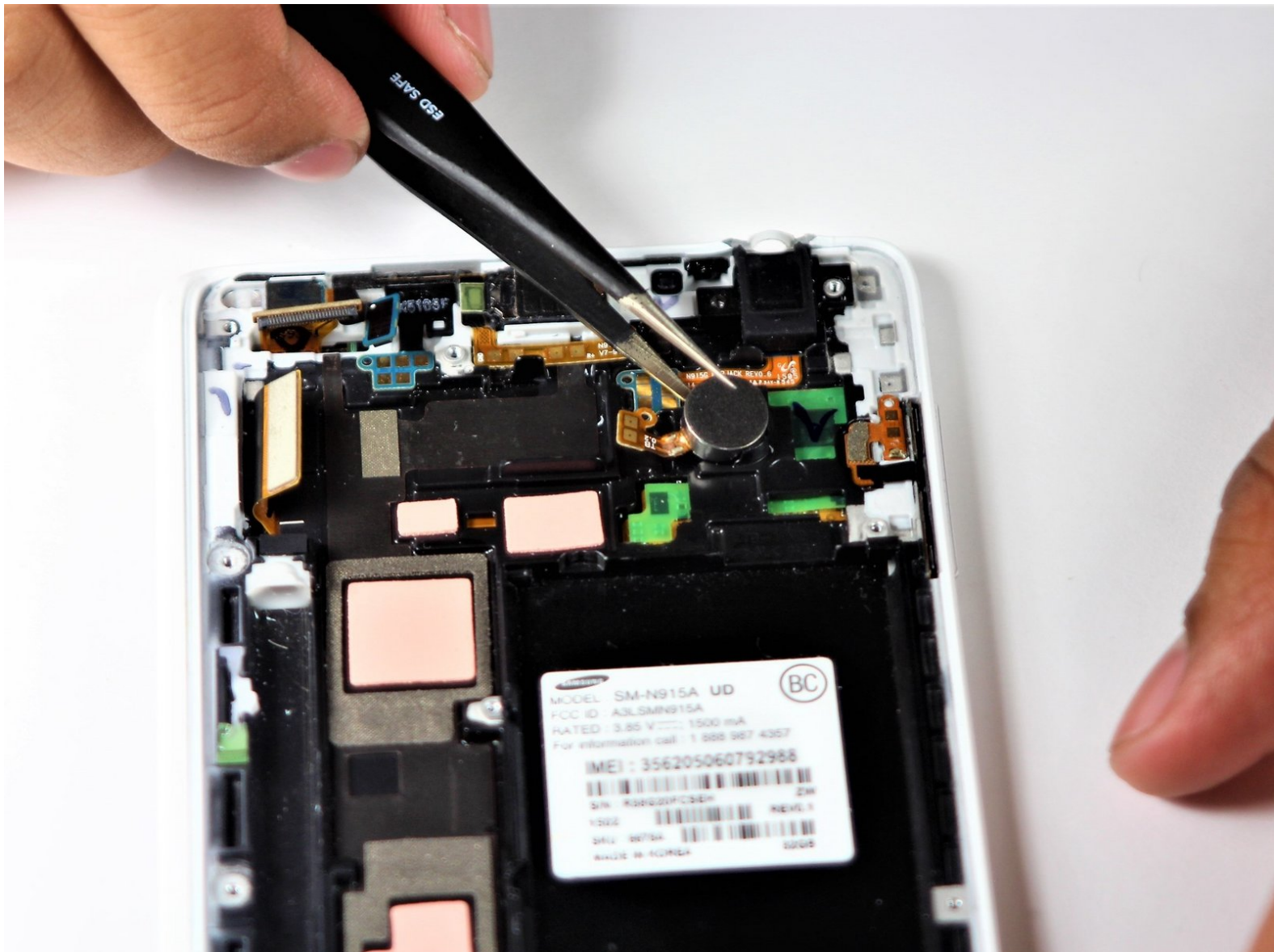




Samsung Galaxy Note Edge Vibrator Replacement

This guide is used to replace the vibrator in your Samsung Galaxy Note Edge.

Written By: Duc Huynh



INTRODUCTION

The Vibration motor causes the phone to vibrate and provides the user with haptic feedback during phone use.



TOOLS:

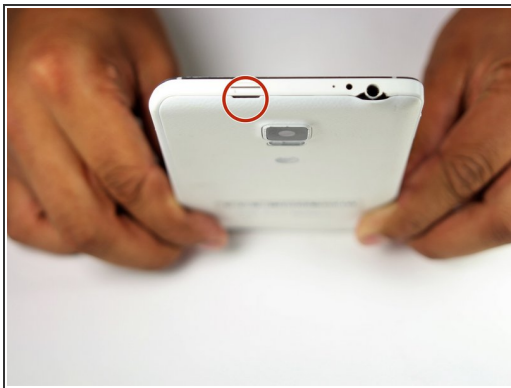
- [Phillips #000 Screwdriver](#) (1)
 - [Spudger](#) (1)
-

Step 1 — Battery



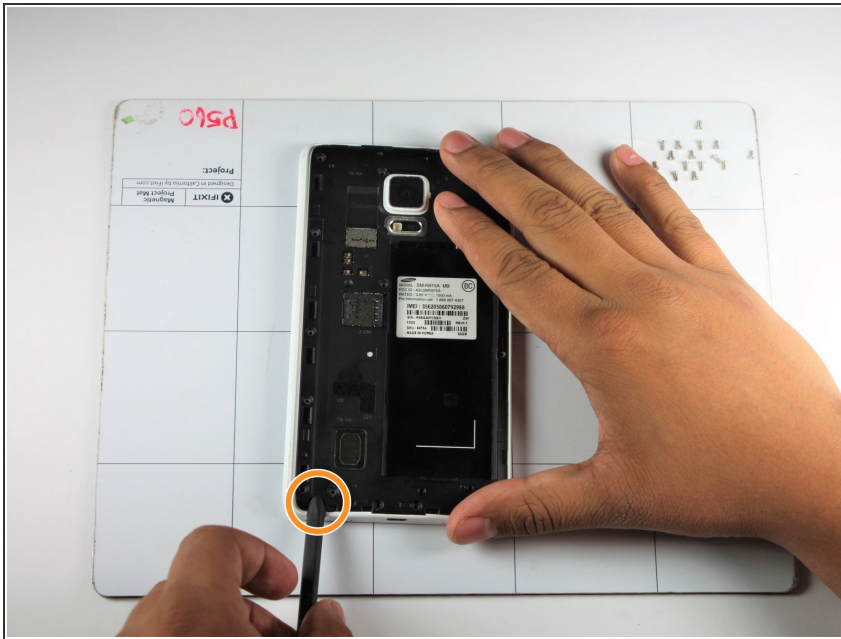
- Power down your device and make sure that it is turned off.
- Place the phone with the screen facing down on a clean flat surface.

Step 2



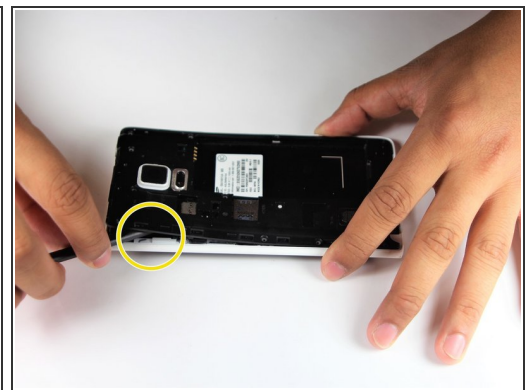
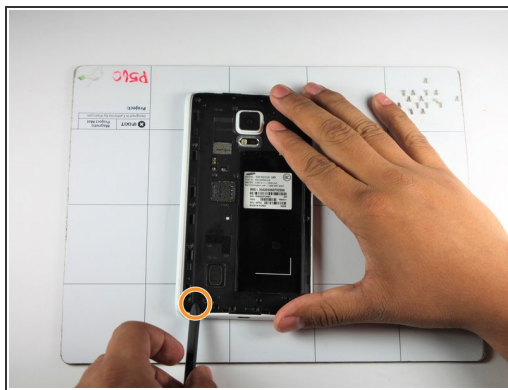
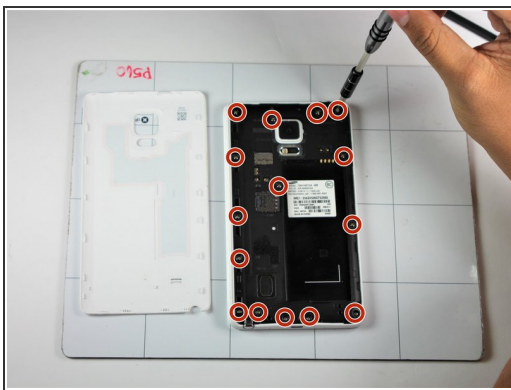
- Use your Supdger to remove the back cover of the phone using notch located in the top left corner of the phone.
- Remove battery by using your Supdger on the notch located directly underneath battery location.
- ⓘ During the creation of this guide, we did not have access to a battery in our device.

Step 3 — Motherboard



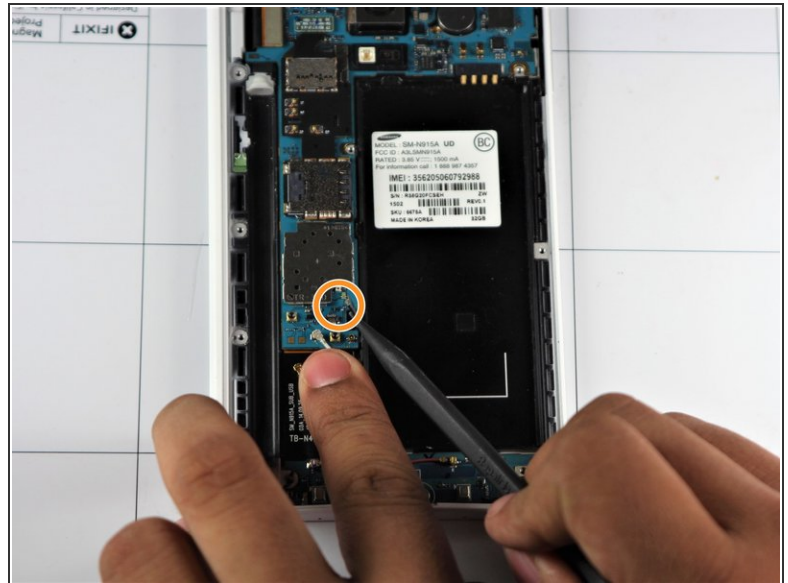
- Remove the SIM Card from the SIM Card holder by gently sliding the SIM Card horizontally.
- Remove the stylus from the stylus holder.

Step 4



- Using a Phillips #000 Screwdriver, remove the fifteen 4mm screws that secure the rear chassis.
- Insert your spudger into the stylus socket and pry the midframe from the phone.
- Move the spudger around edge of phone, carefully prying the midframe from the phone until midframe is entirely separated.

Step 5



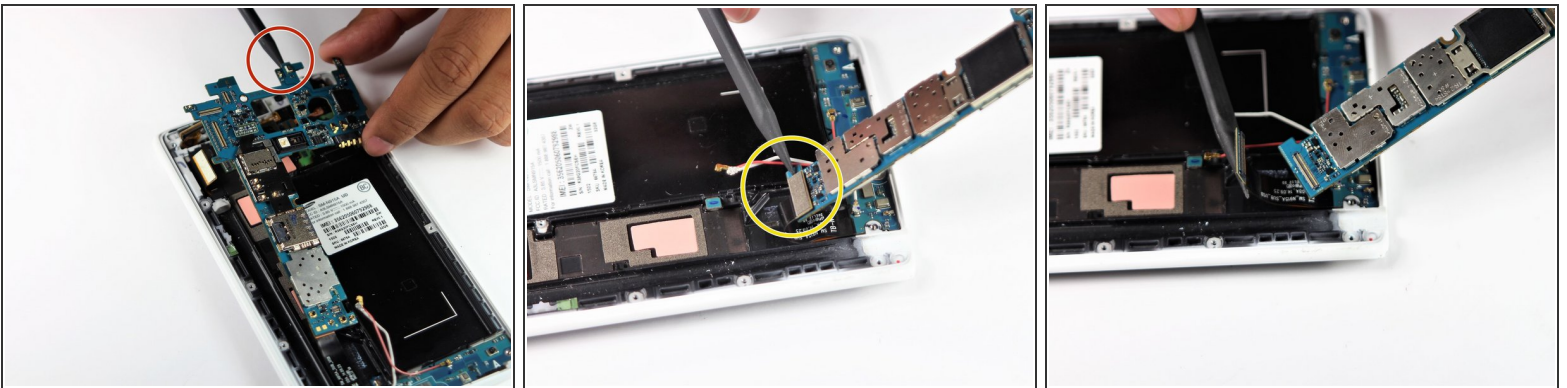
- With the pointed end of your spudger, disconnect the two wires (pink and white) located near the bottom of the phone.
- Using pointed end of your spudger, disconnect the finger print scanner cable- it is located directly above the pink and white cables.

Step 6



- Using your Spudger's pointed end, pry off the following leads that connect these parts to the logic board in the top left hand corner:
 - Front Facing Camera
 - AMOLED Display Screen
 - AMOLED Capacitive Screen

Step 7



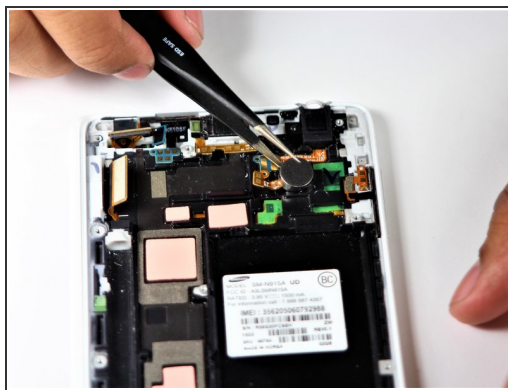
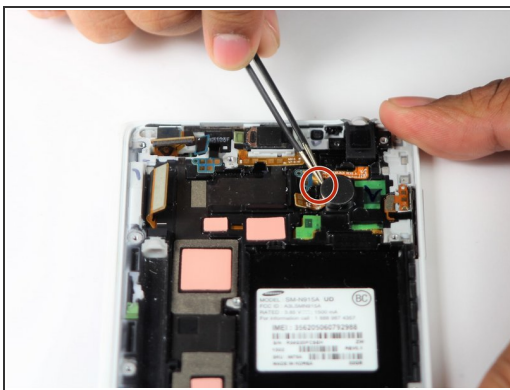
- At the top end, gently insert pointed end of spudger underneath the motherboard.
- Lift the motherboard up gently. Disconnect the cable connecting the daughter board. It is attached to the underside of the motherboard.
- Remove the motherboard from the device.

Step 8 — Vibrator




- Insert the sharp end of the spudger underneath the golden cables connecting the vibration motor. Gently pry upwards to disconnect them.

Step 9



- Insert one end of the Tweezers into said notch. Pry upwards and grab the round piece to remove the vibration motor.

 Adhesive holds the motor in place, so force is required to break this bond.

To reassemble your device, follow these instructions in reverse order.