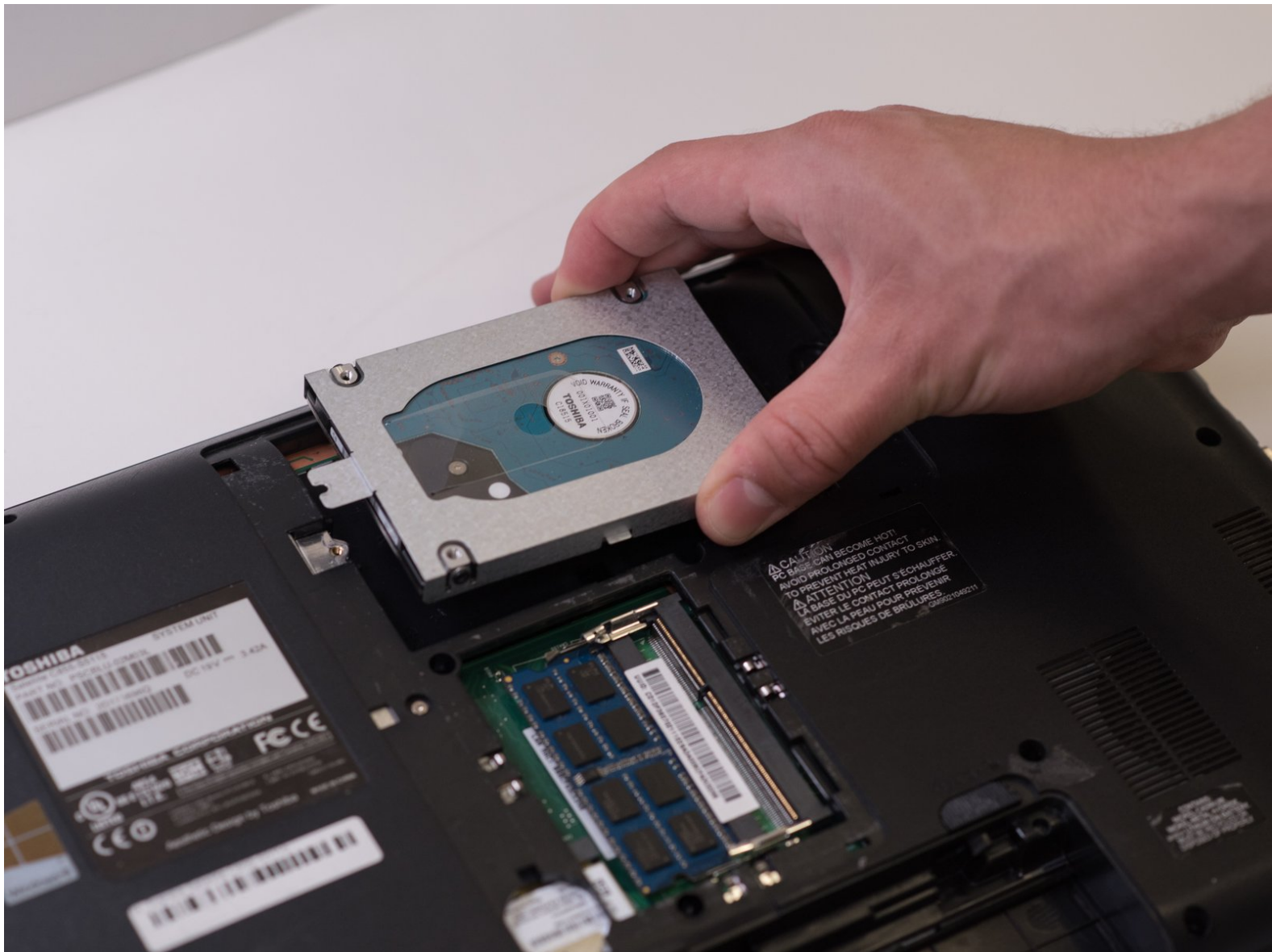




Toshiba Satellite C855-S5115 Hard Disk Drive Replacement

You may need to replace your hard drive when your computer is slowing down or freezing often, or your saved files are corrupted or disappear.

Written By: Claire Fletcher



This document was generated on 2020-11-26 01:43:54 PM (MST).

INTRODUCTION

The hard disk drive is an essential component to a laptop. This guide will show you how to safely remove and replace your hard disk drive when your device needs a new one.



TOOLS:

- [JIS #1](#) (1)
 - [Spudger](#) (1)
-

Step 1 — Battery



- Use two fingers to pull the ridged lock tabs on the bottom of the computer toward the edges. This will unlock the battery.

Step 2



- Holding the left tab in place, use the groove located between the two tabs to pry the battery up and out.

Step 3 — Hard Drive



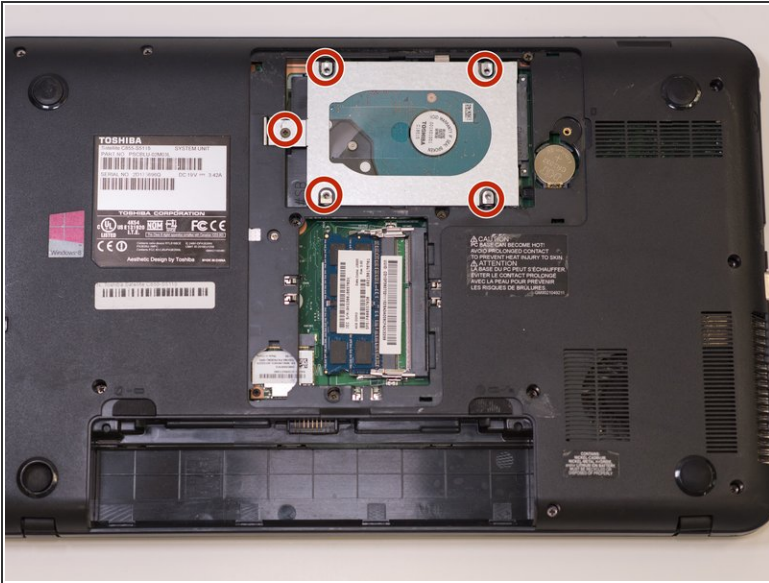
- Remove the 7mm Phillips screw located on the back panel of the device using the J1S Phillips head screwdriver.

Step 4



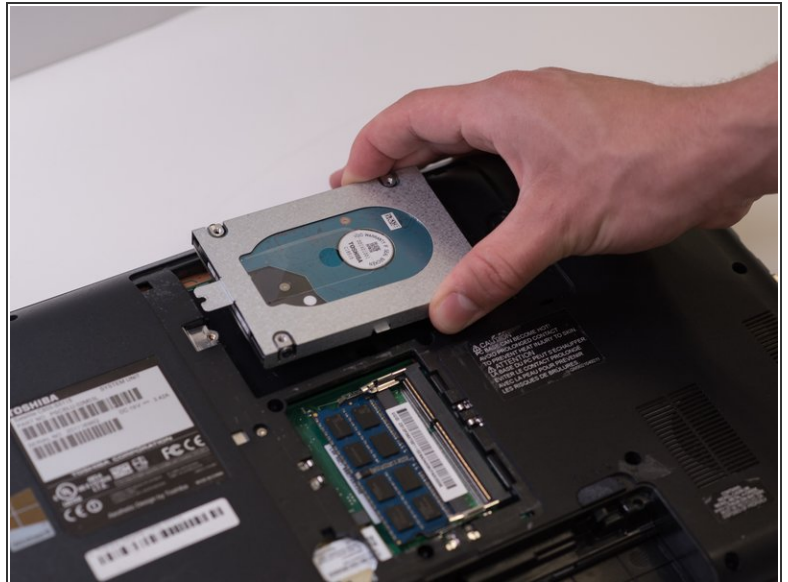
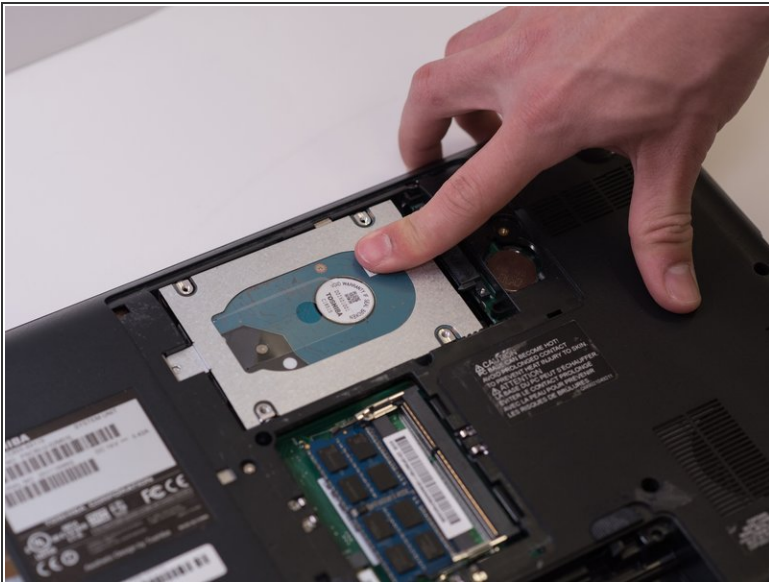
- Pry the back panel out of the laptop using the spudger tool

Step 5



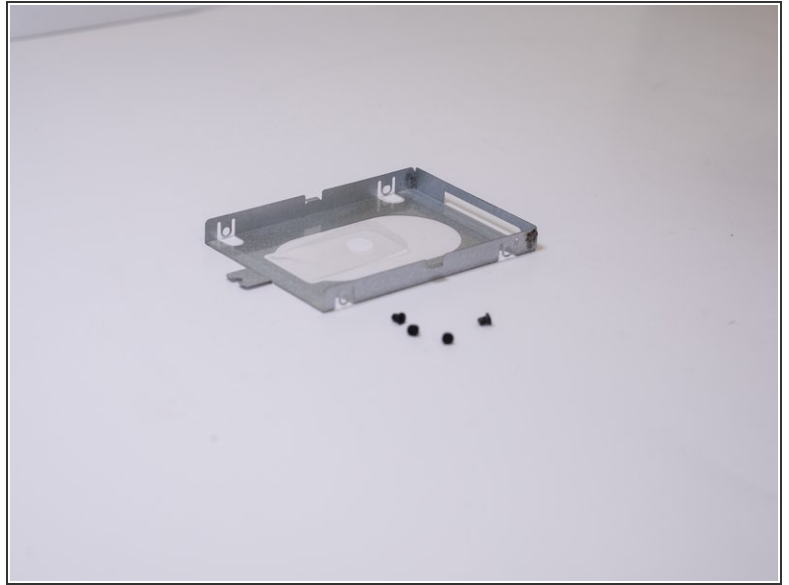
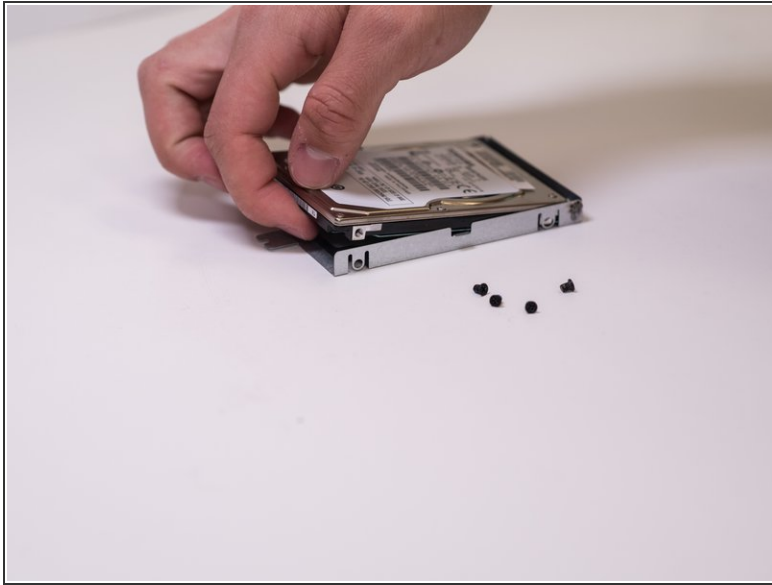
- Locate and unscrew the five 3.5mm screws holding the hard drive in place using the J1S Phillips head screwdriver

Step 6



- Slide the HDD towards the sticker on the left.

Step 7



- Remove the four 2mm Phillips screws from the HDD tray securing the disk using the J1S Phillips head screwdriver.
- Remove the hard drive from the tray.

To reassemble your device, follow these instructions in reverse order.