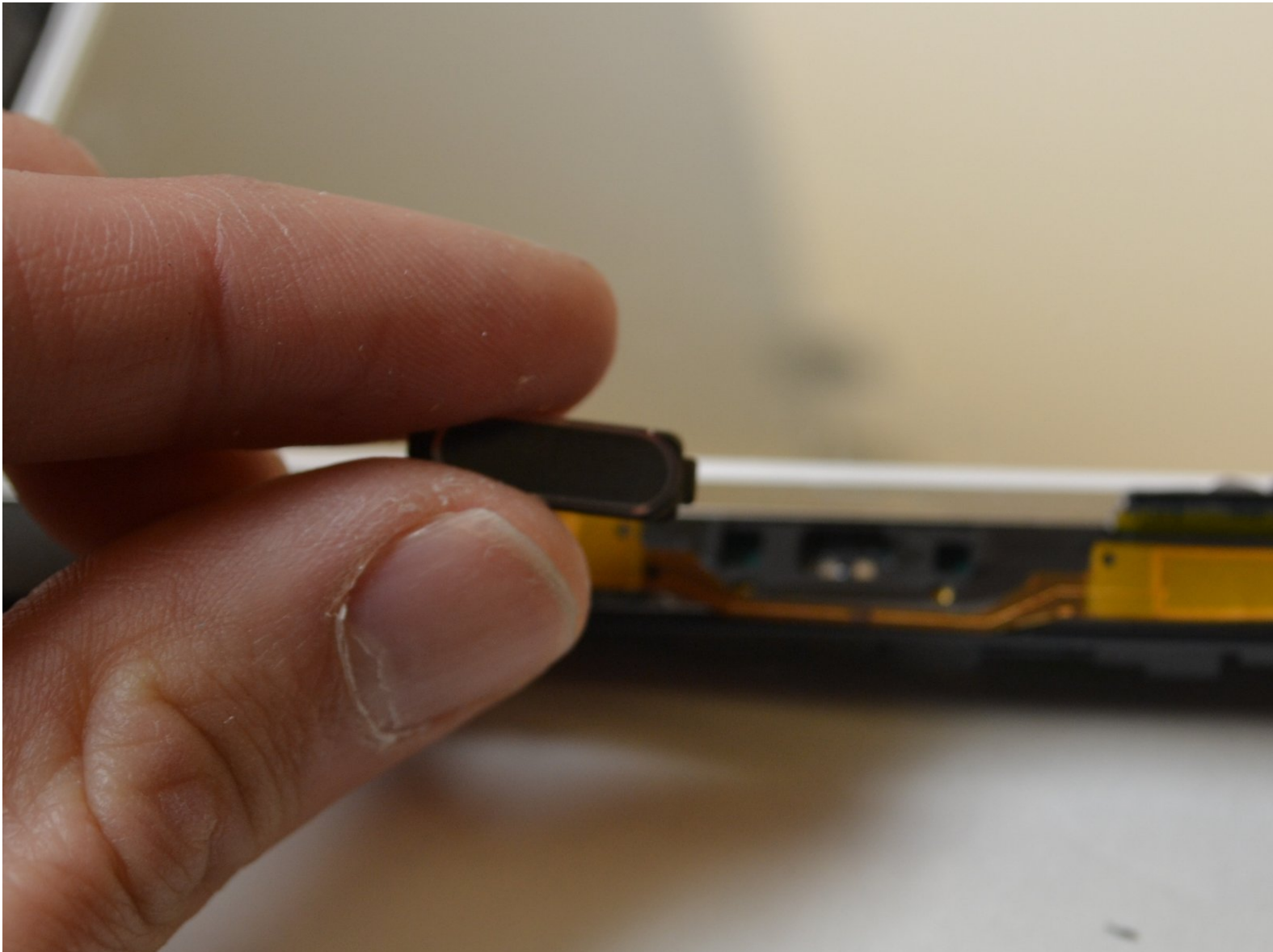




Samsubg Galaxy Tab A 10.1 S-Pen Home Button Replacement

This guide will show step by step how to replace the home button on a Samsung Galaxy Tab A 10.1 tablet.

Written By: Guneet Bawa



INTRODUCTION

This guide will show step by step how to replace the home button on a Samsung Galaxy Tab A 10.1 tablet.



TOOLS:

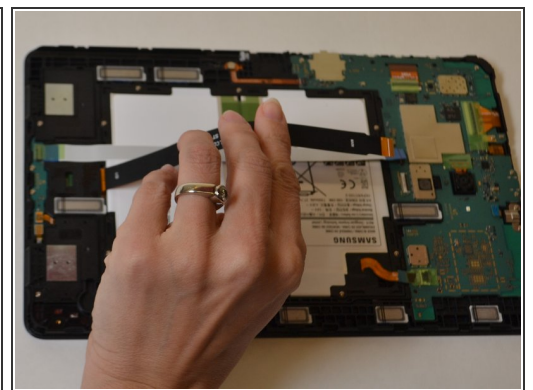
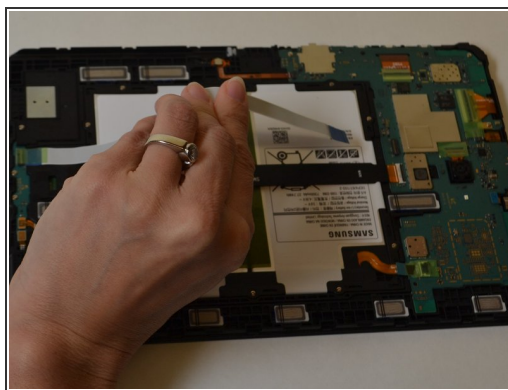
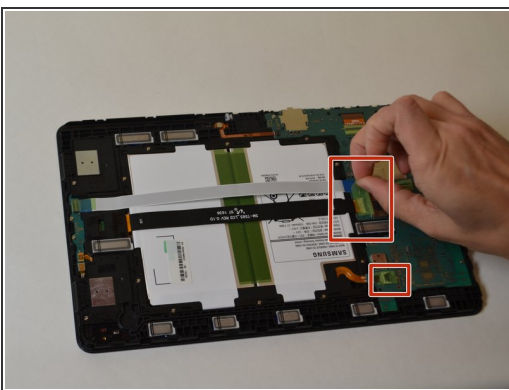
- [iFixit Opening Tools](#) (1)
 - [Phillips #000 Screwdriver](#) (1)
 - [Heat Gun](#) (1)
-

Step 1 — Battery



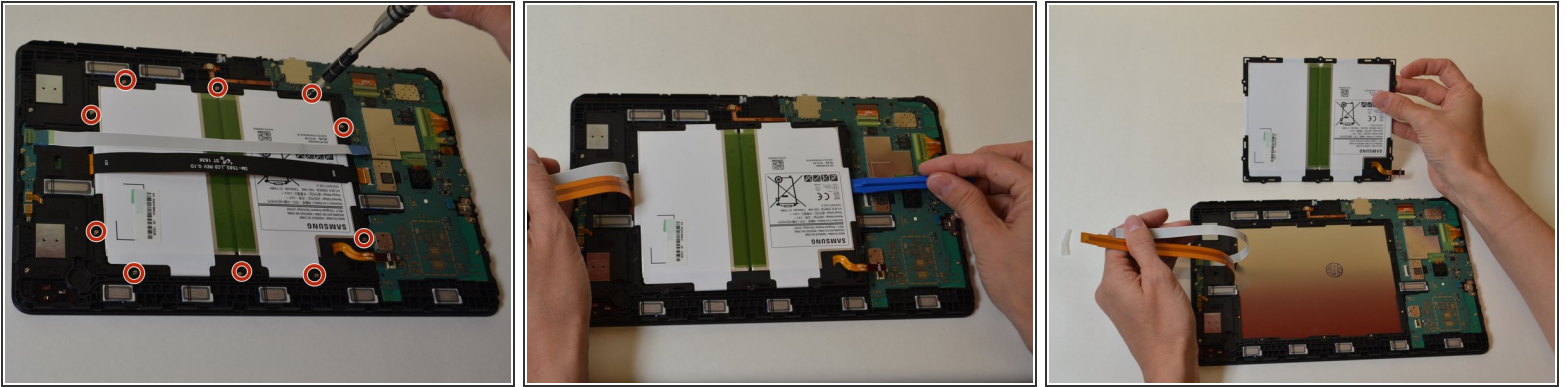
- Remove all external power and turn off the tablet.
- Insert a plastic opening tool between the screen and rear casing.
- Pry the screen and rear casing apart.

Step 2



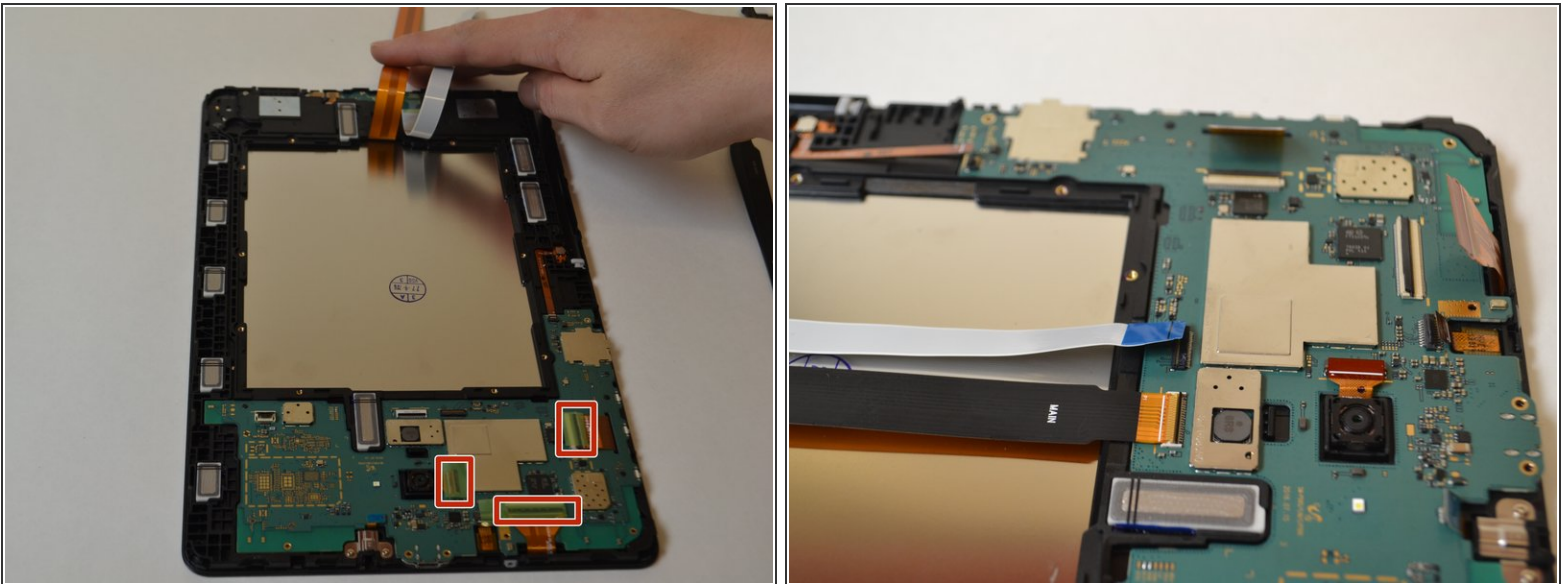
- Remove the three green pieces of tape covering the white, black, and gold ribbon cables.
- Use a spudger to flip up the retaining flap on the three ribbon cable [ZIF](#) sockets.
- Pull the ribbon cables out of the sockets.

Step 3



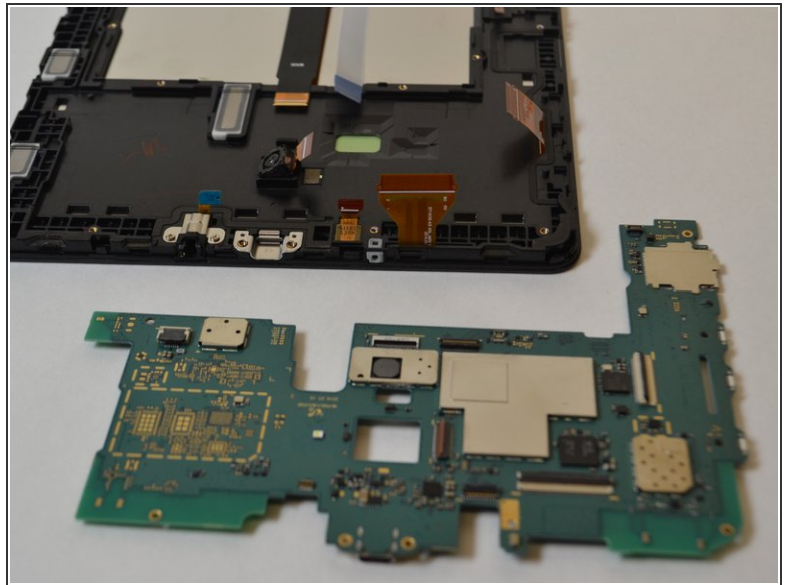
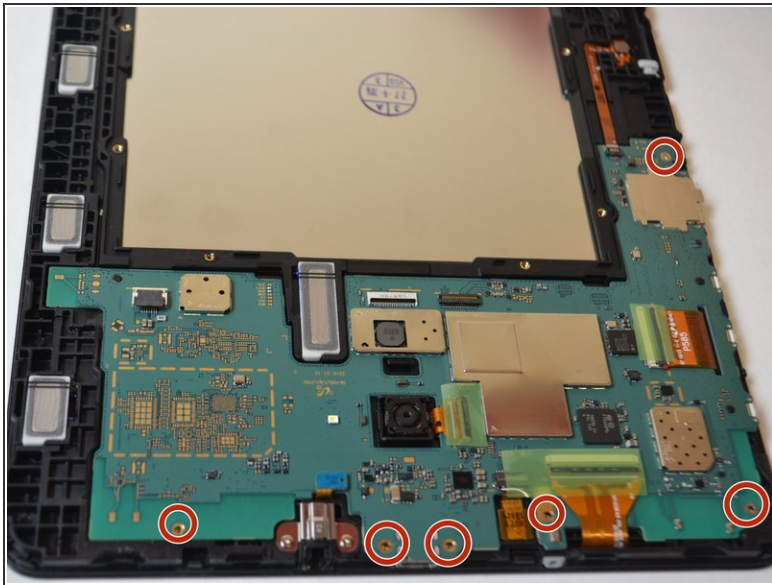
- Remove the ten 4mm Phillips #000 screws from the battery.
- Use a plastic opening tool to pry up the battery.
- Remove the battery.

Step 4 — Home Button



- Remove the green protective tape from the three ZIF connectors on the motherboard.
- Use a spudger to flip up the retaining flap on the three ribbon cable [ZIF](#) sockets.
- Pull the ribbon cables out of their sockets.


Step 5



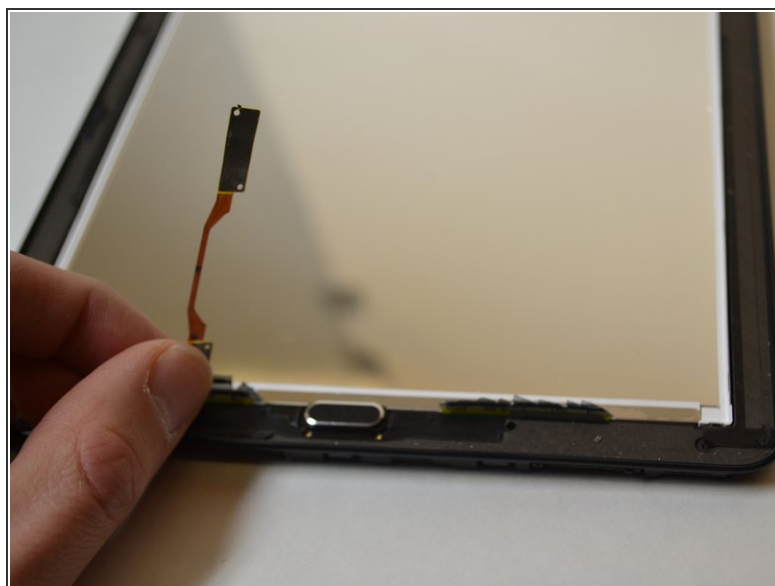
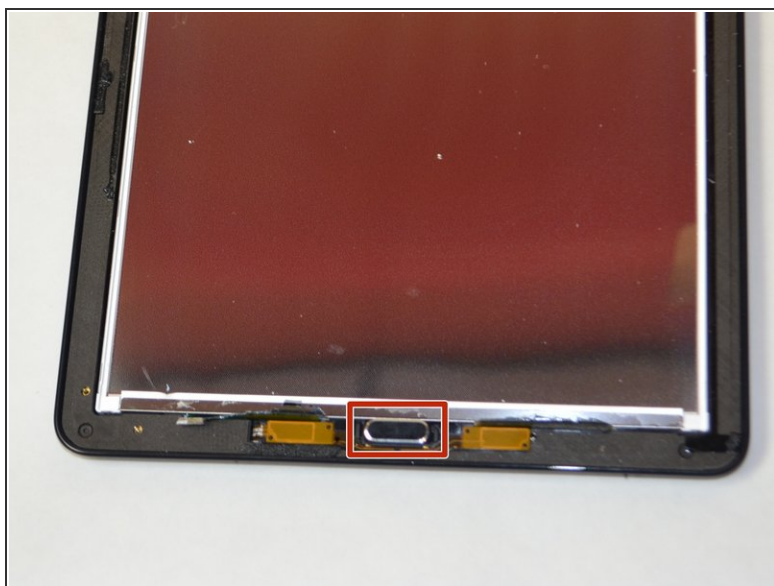
- Remove the six 4mm Phillips #000 screws from the motherboard.
- Remove the motherboard.

Step 6



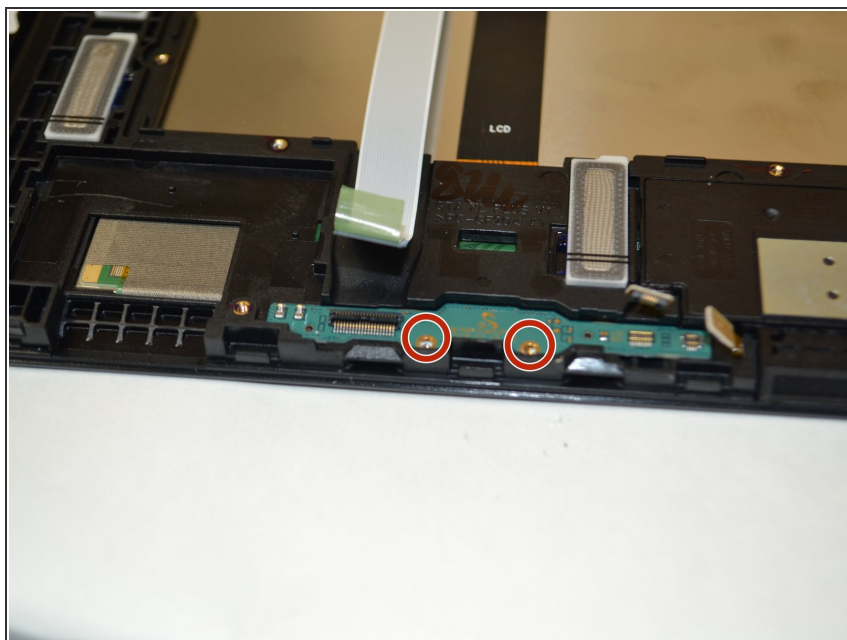
- Insert a plastic opening tool between the screen and bezel.
 - Slide the plastic opening tool around the perimeter while applying a prying motion.
 - Remove the screen from the display.
-  Applying heat may be needed to loosen the glue.

Step 7



- Locate the Home button on the front of the panel and carefully lift the gold ribbon surrounding it from RIGHT to LEFT.

Step 8



- Using your Phillips #000 screwdriver Remove the two 4mm Phillips #000 screws from the home button.

Step 9



- Remove the home button by sliding it to the left or right while pulling up.

To reassemble your device, follow these instructions in reverse order.