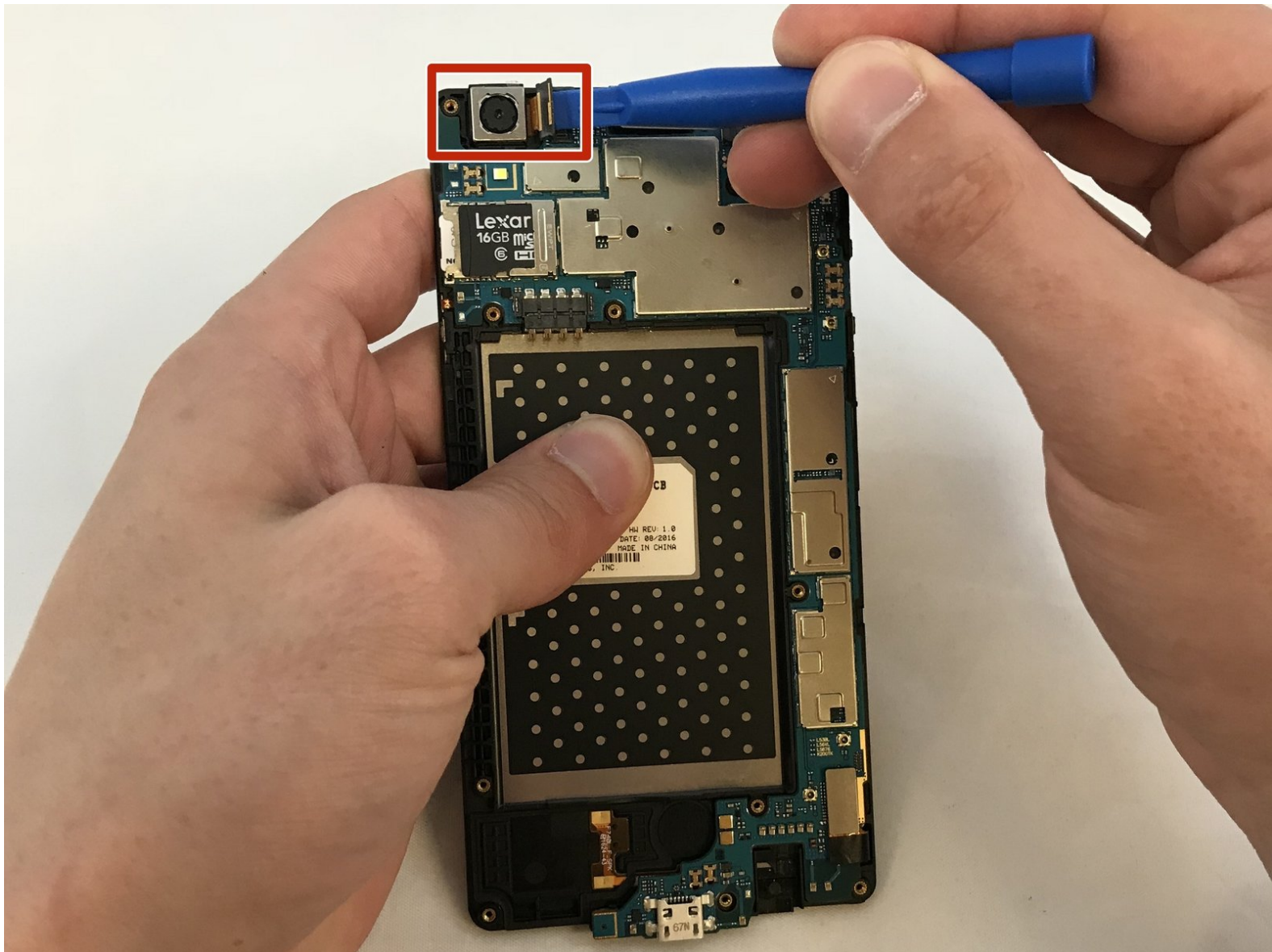




LG X Style Rear Facing Camera Replacement

How to remove your rear facing camera.

Written By: cecilia morales



INTRODUCTION

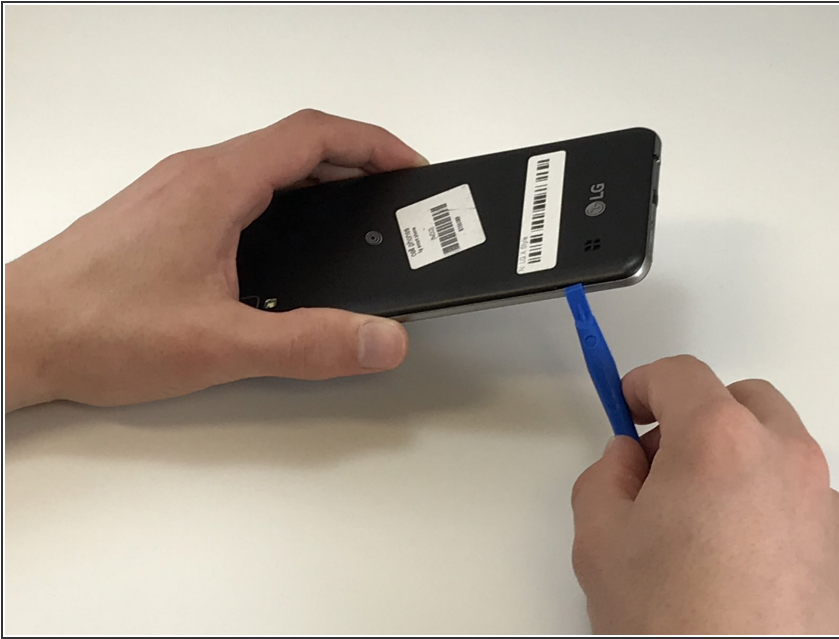
Use this guide to remove a faulty rear facing camera in your LG X Style.



TOOLS:

- [Phillips #000 Screwdriver](#) (1)
 - [Tweezers](#) (1)
 - [iFixit Opening Tools](#) (1)
-

Step 1 — Battery



- Power down the device and make sure that it is turned off.
- Insert the plastic opening tool into the bracket space on the back bottom left of the phone.
- Gently twist tool clockwise until the back case pops open [this will create a small gap].
- Slide the tool along the gap around the entire device.

Step 2



- Insert the plastic opening tool into the indent below the battery, and pry up to lift and remove the battery.

Step 3 — Screen



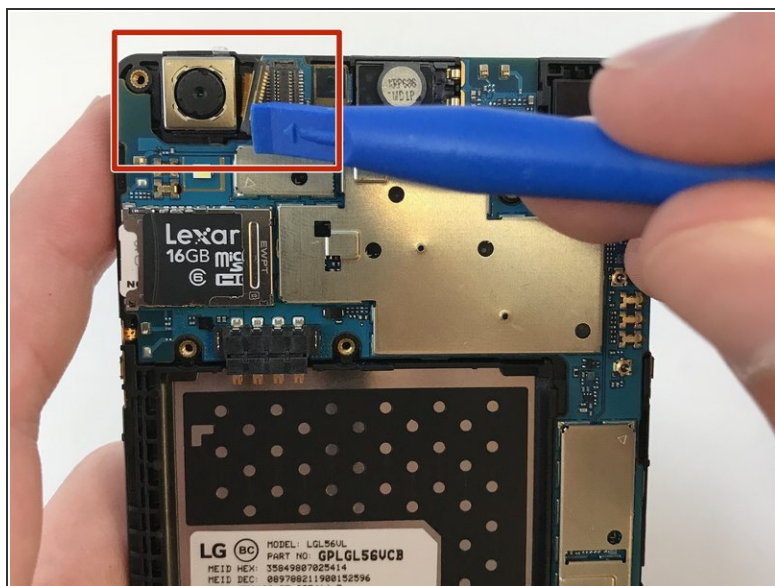
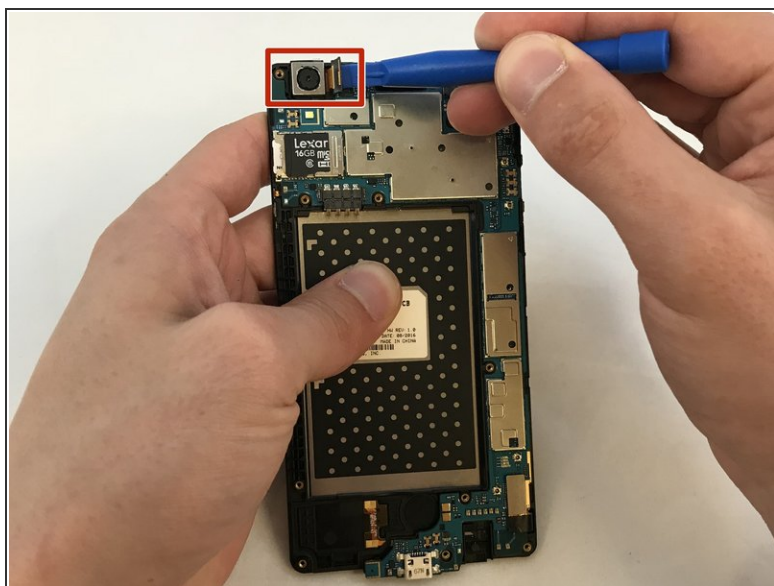
- With a Phillips #000 screwdriver, remove the twelve 3mm screws.

Step 4



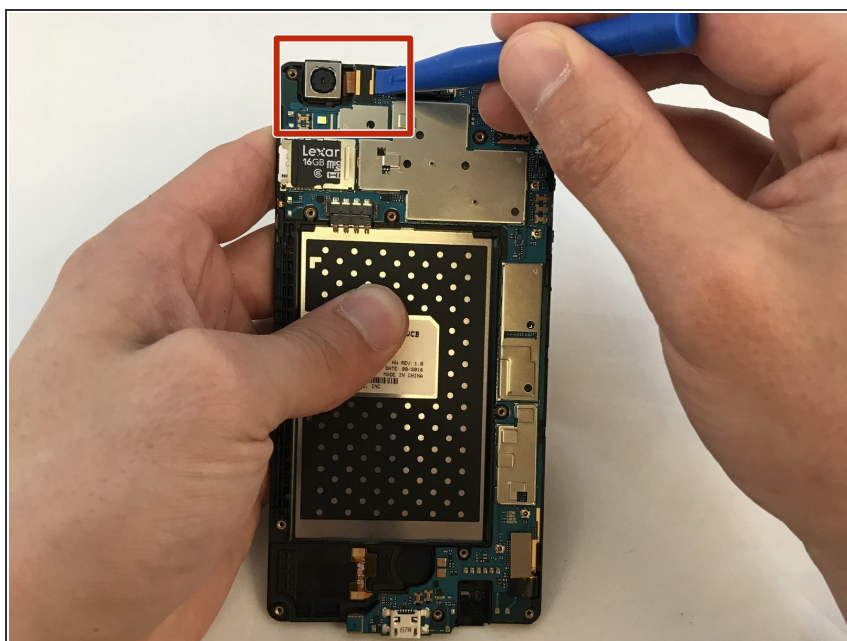
- Create a gap with plastic opening tool by applying pressure between glass screen and plastic edge of device.
- Slide prying tool around entire device beginning toward the top.
- Lift off and remove the screen from the device.

Step 5 — Rear Facing Camera



- Gently use the plastic opening tool to pinch off camera connection tab from motherboard.

Step 6



- With the plastic opening tool, gently lift up camera housing and remove.

To reassemble your device, follow these instructions in reverse order.