



# Asus Chromebook C201PA-DS02-LG

## Motherboard Replacement

How to replace an Asus Chromebook C201PA-DS02-LG motherboard.

Written By: Brittany M Won



---

## INTRODUCTION

If your computer is running slowly or it won't connect to wifi, you probably have to change your motherboard. This model has most of the components directly soldered on to the motherboard.

---

### TOOLS:

- [iFixit Opening Tools](#) (1)
  - [Metal Spudger](#) (1)
  - [Phillips #0 Screwdriver](#) (1)
  - [Tweezers](#) (1)
-

## Step 1 — Keyboard



- Use a metal spudger to pry off the two feet closest to the hinge of the laptop.

☞ The feet are attached to the laptop by adhesives, therefore they may not stick as well after multiple removals.

## Step 2



- Use a Phillips #0 screwdriver to unscrew the six 5mm screws.
- Use a Phillips #0 screwdriver to unscrew the two 6mm screws.



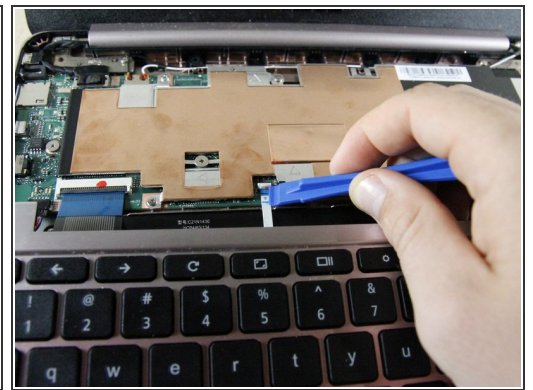
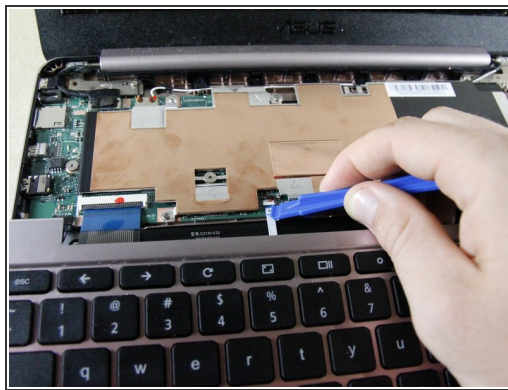
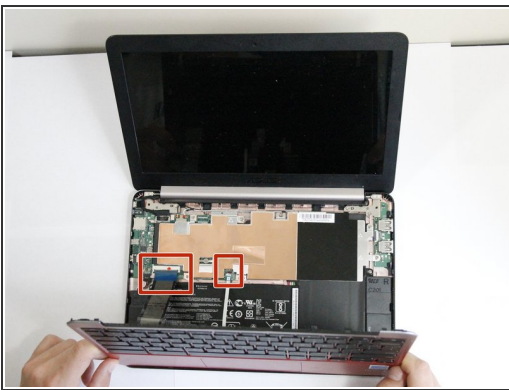
## Step 3



- Use a plastic opening tool to pry the keyboard off the edges of the computer.

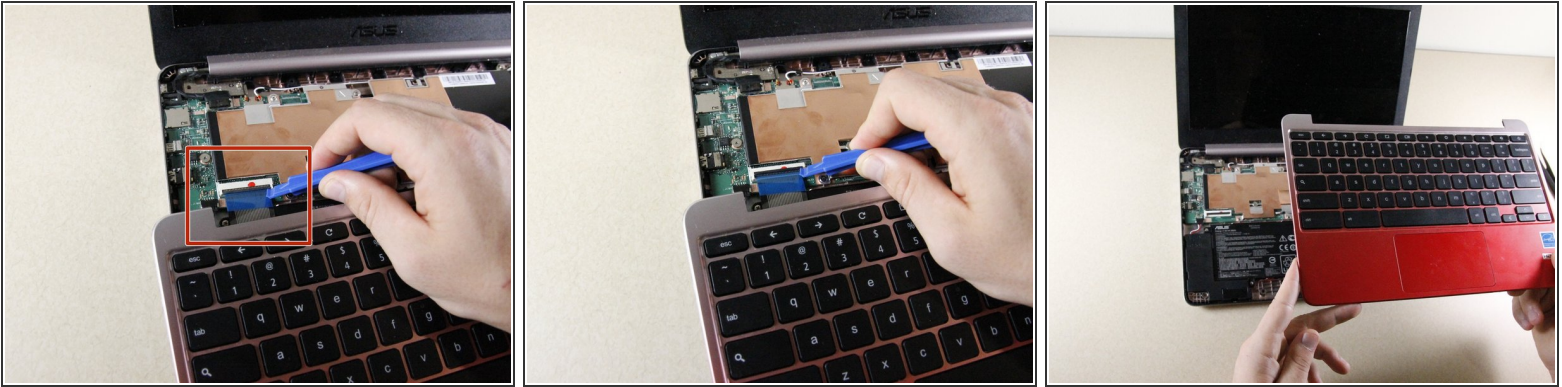
**i** The edges will make a popping noise.

## Step 4



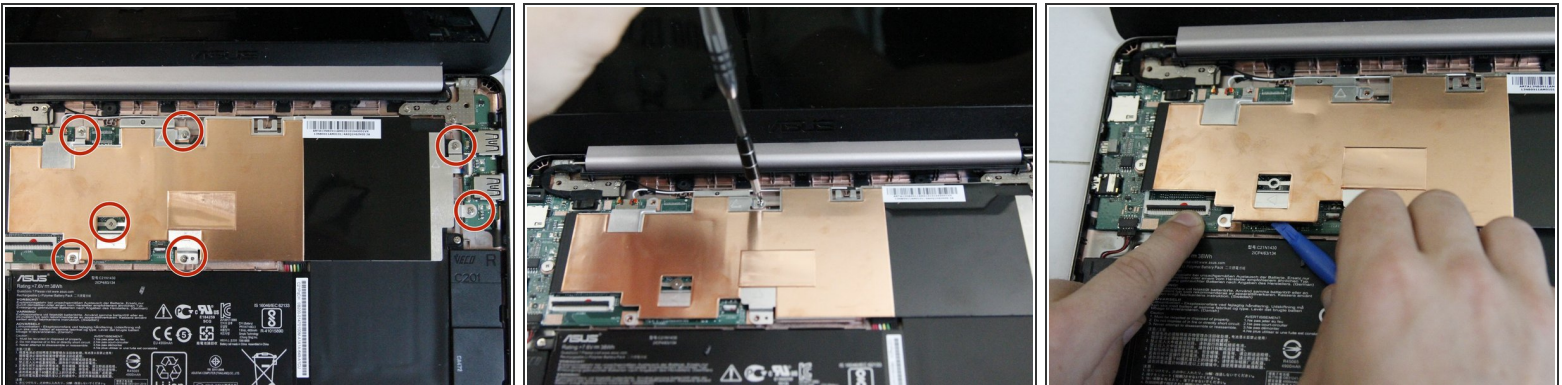
- Flip up the white bar that connects the thin white strip using a plastic opening tool.
- Grab the thin white strip and pull straight back to remove the strip from the connector.

## Step 5



- Use a plastic opening tool to lift the black bar above the wide black strip in the connector.
- Grab the wide black strip and pull straight back to remove the strip from the connector.
- Remove the keyboard by lifting it straight up.

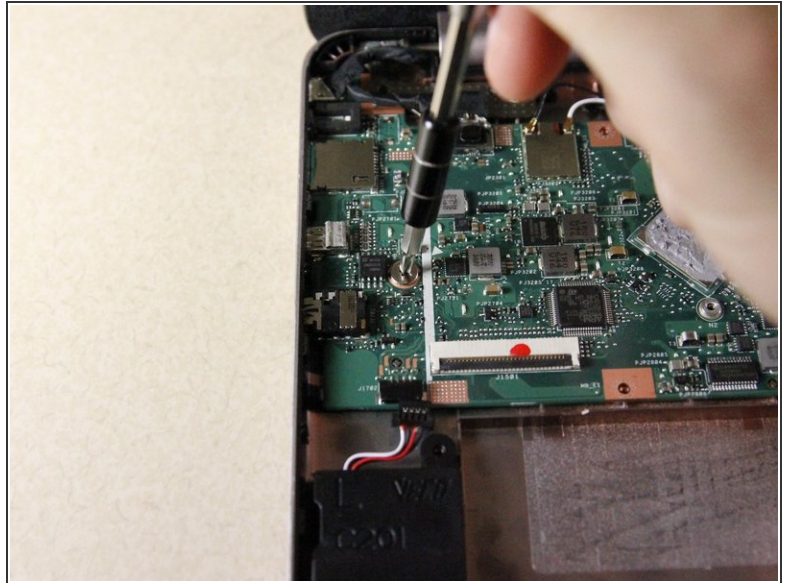
## Step 6 — Metal Plate



- Unscrew the seven 4mm screws using a Phillips #0 screwdriver.
- Wiggle the plate back and forth to loosen the adhesive under the plate.
- ☞ The adhesive will not be the same after removal and more adhesive may be necessary upon reassembly.
- Rotate the screwdriver in a counterclockwise direction to remove the screws.
- ⚠ Do not rest your arm or hand in the adhesive.

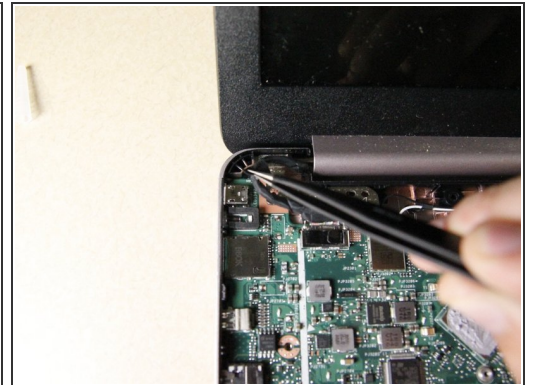
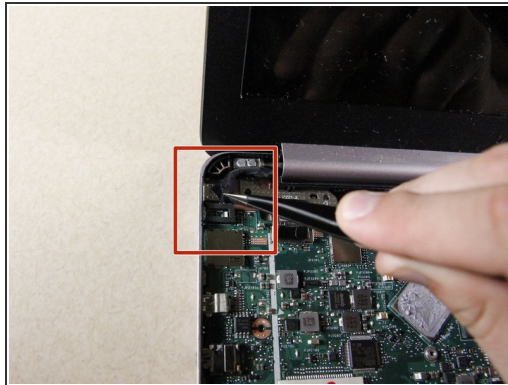
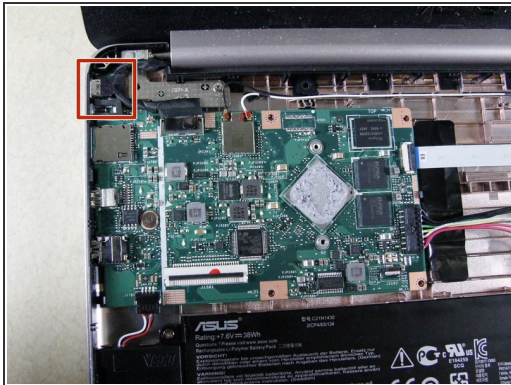


## Step 7 — Motherboard



- Use a Phillips #0 screwdriver to unscrew the 4mm screw. Rotate the screwdriver in a counterclockwise direction to undo the screw.

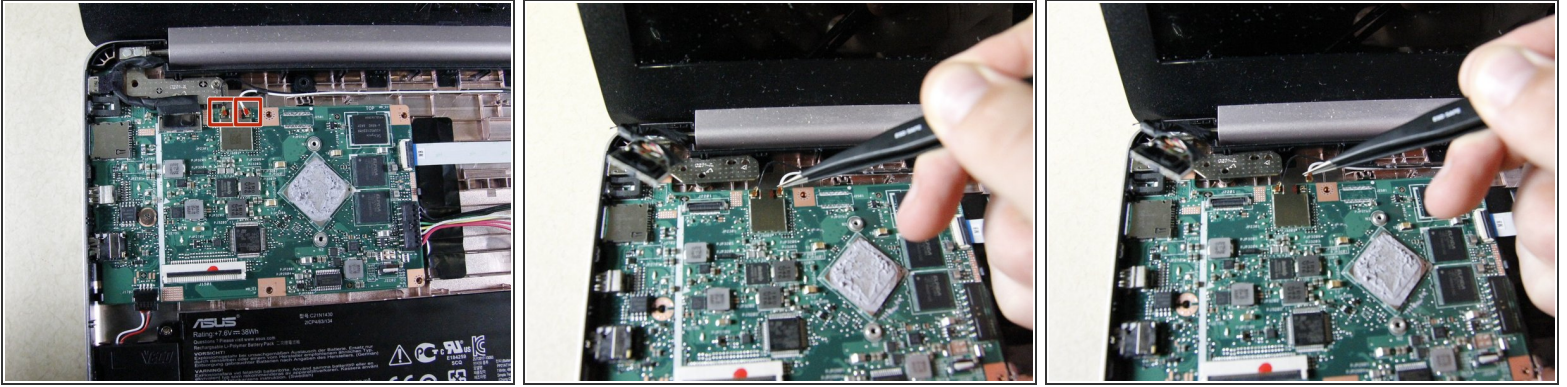
## Step 8



- Use tweezers to gently pull upward on the adhesive black tape.



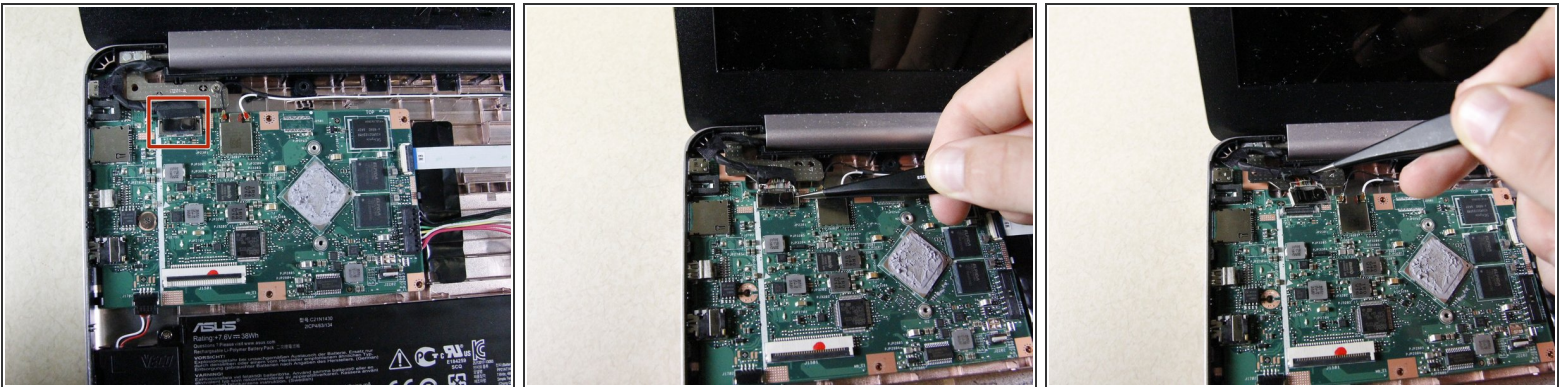
## Step 9



- Use tweezers to pull upward and pop off the wifi antenna cables.

**i** Removing the cables may cause popping noises.

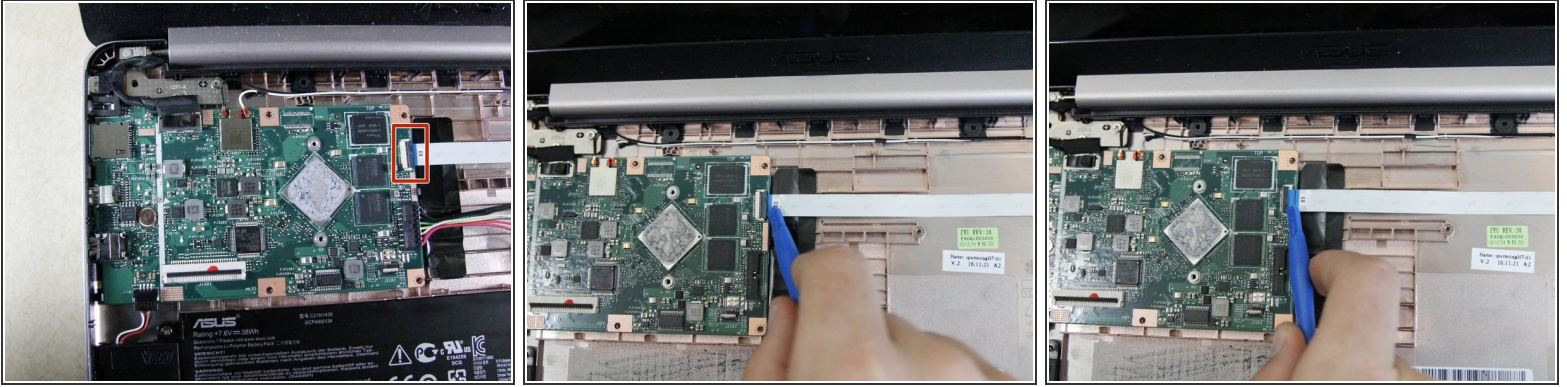
## Step 10



- Use tweezers to gently pull upward and pop off the LCD cable. It may help to do this on each side of the attachment, rather than in one pull.

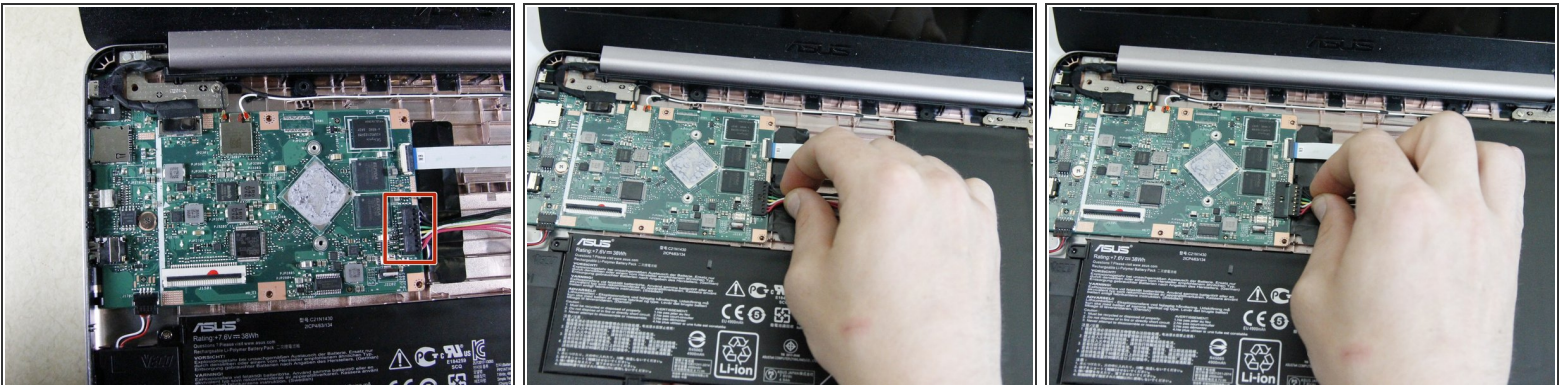
**i** Removing the cable may cause popping noises.

## Step 11



- Flip up the white bar that connects the thin white strip using a plastic opening tool.
- Grab the thin white strip and pull straight back to remove the strip from the connector.

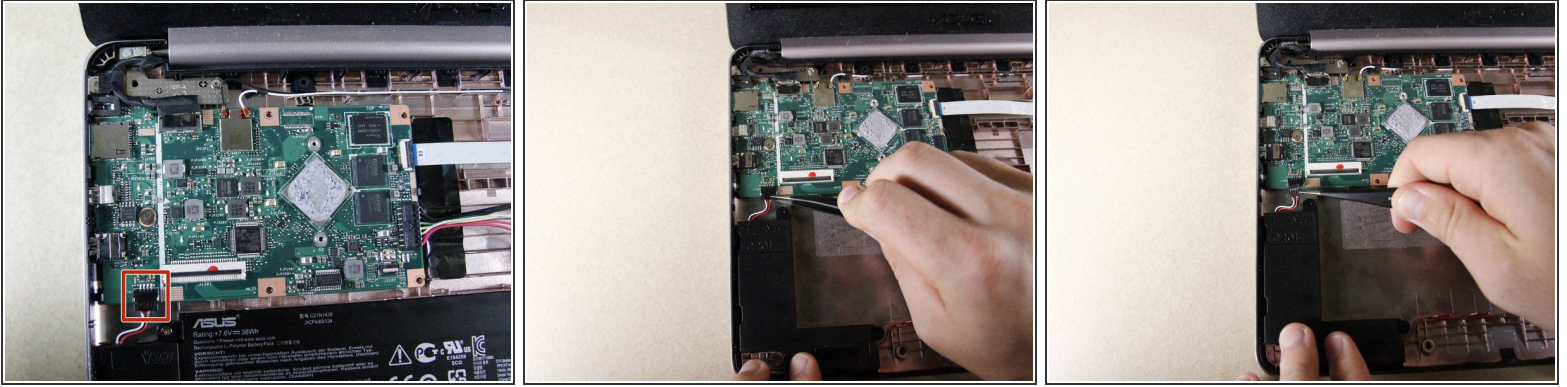
## Step 12



- Remove the rainbow connector by firmly grasping the rainbow wires and pulling straight back. It will help to brace the motherboard when you pull.

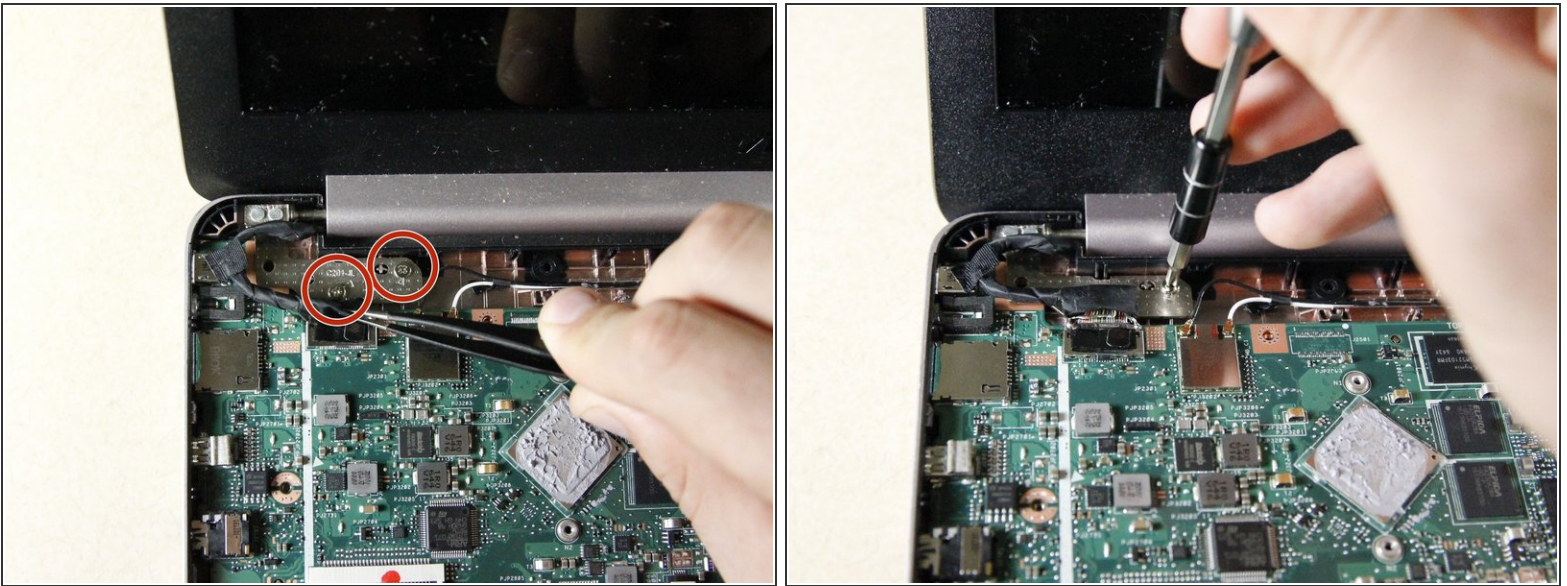


## Step 13




- Use tweezers to gently grasp the wire connector and pull straight back.

## Step 14



- Use a Phillips #0 screwdriver to unscrew the 4mm screws. Rotate the screwdriver in a counterclockwise direction to undo the screws.

 One of the screws may be hidden underneath the black LCD connector.

## Step 15



- Use a plastic opening tool to lift the motherboard off the bottom. You may need to wiggle it around to get it loose.

To reassemble your device, follow these instructions in reverse order.