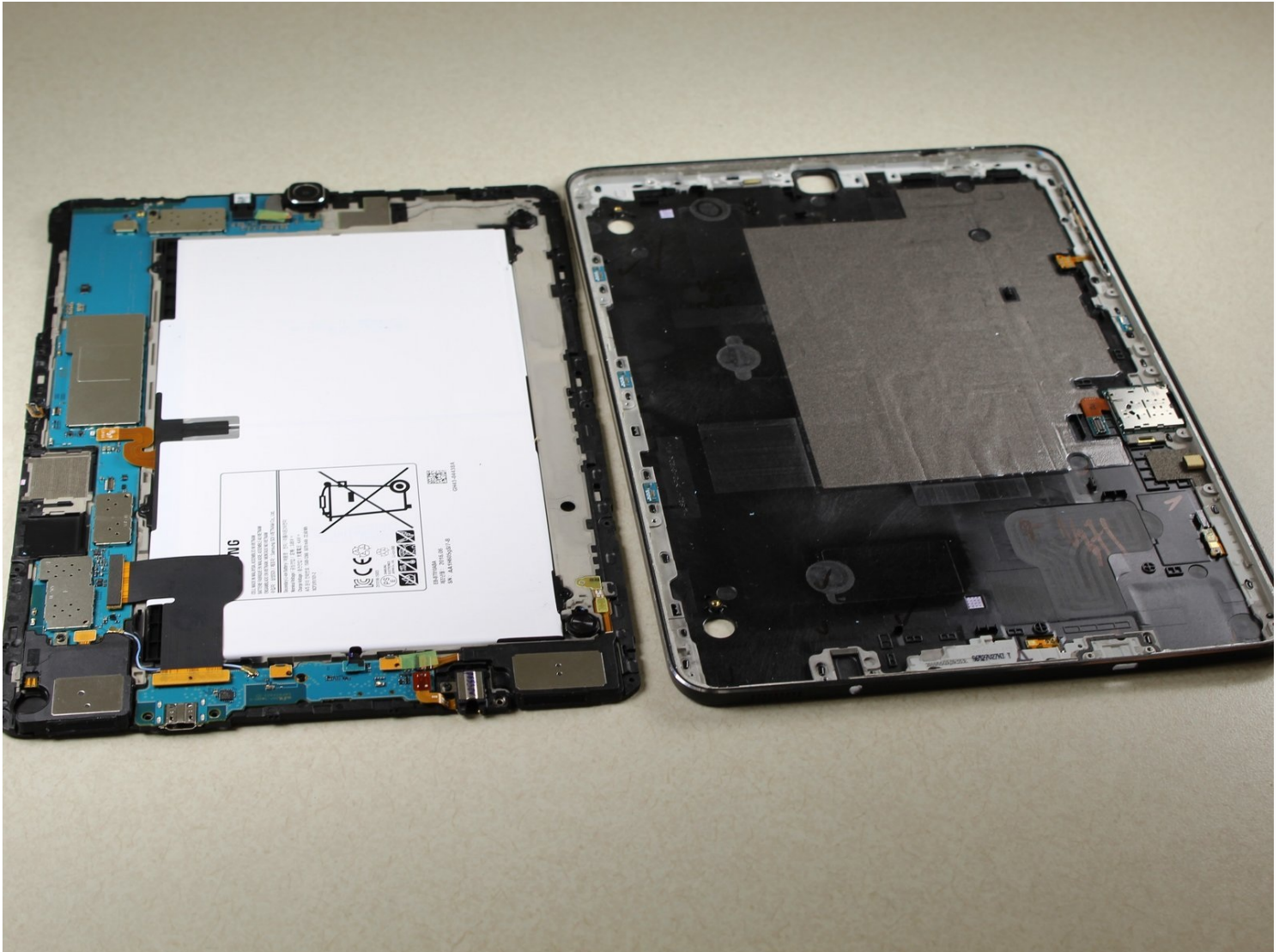




# Samsung Galaxy Tab S2 9.7 SM-T813 Battery Replacement

The battery is essential to the function of...

Written By: Nash Elder



# INTRODUCTION

The battery is essential to the function of your device. Replace the life of your device by following these simple steps.

## TOOLS:

[JIS #00 Screwdriver](#) (1)  
[Phillips #0 Screwdriver](#) (1)

[iOpener](#) (1)

[Suction Handle](#) (1)

[iFixit Opening Picks \(Set of 6\)](#) (1)

*A set of 6 picks will suffice, but more picks will make removing the screen easier.*

[iFixit Opening Tool](#) (1)

[Tweezers](#) (1)


## PARTS:

[Galaxy Tab S2 9.7 Battery](#) (1)

## Step 1 — Screen



- Heat the iOpeners in a microwave for 1-2 minutes.

 **The iOpeners will be hot. Use caution and hold the tabs on the ends.**

- Place heated iOpeners on screen edges to heat the adhesive.
- ① For more detailed instructions on how to use the iOpeners, please refer to the [iOpener Instructions](#).

## Step 2



- Separate the screen assembly from the back by wedging the picks between the two components.
- Slide the picks along the edge and leave them holding the device open all around the edges.

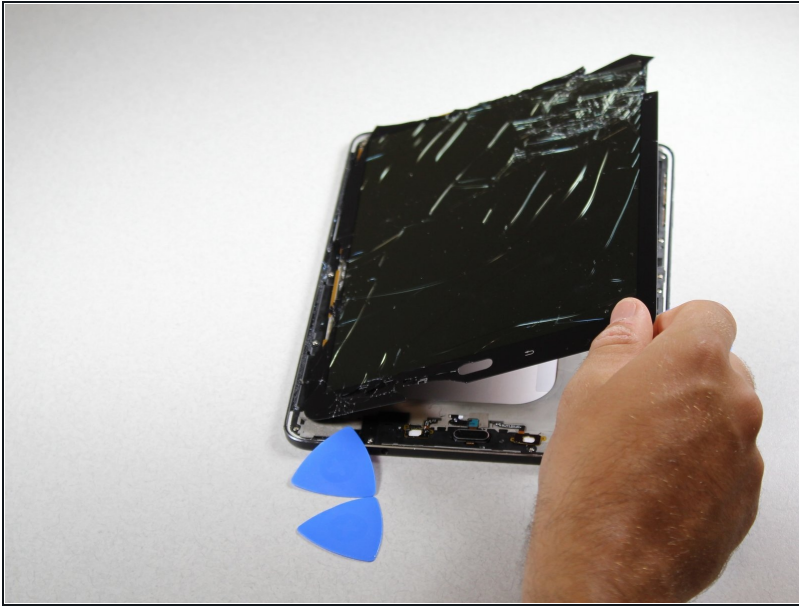
## Step 3



- Place suctioning device near the corner of the screen and gently lift up to create a gap between the front panel assembly and the back.
- Insert the picks to hold the two components apart once a gap is created.



## Step 4



- Once all edges have been disconnected, carefully lift the screen off by pulling one side up.

⚠ Be careful not to cut yourself. Any broken glass from the screen will be sharp.

## Step 5



- Using the [tweezers](#), gently peel up on the silver tape covering the connector.

## Step 6



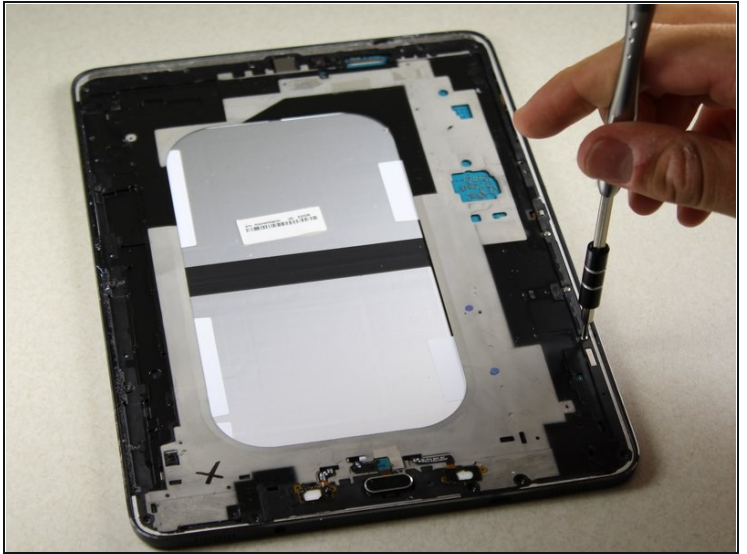
- Use the plastic opening tool to get under the connector piece. This will allow you to remove the front panel assembly from the rest of the device.

## Step 7



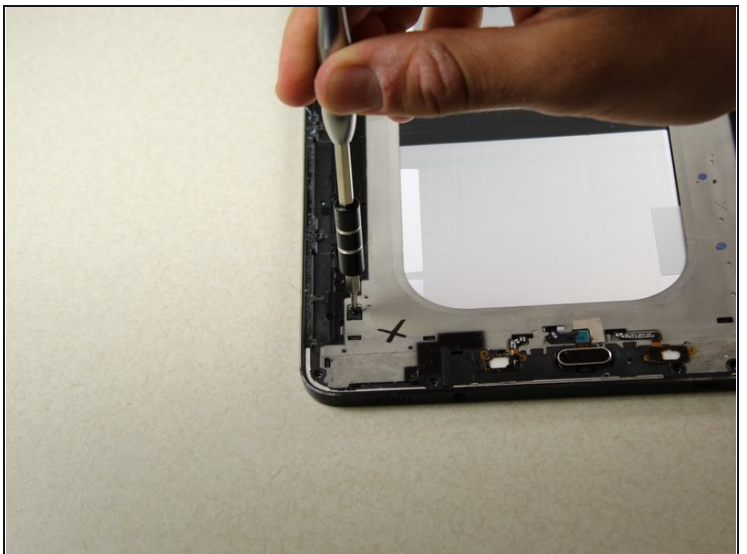
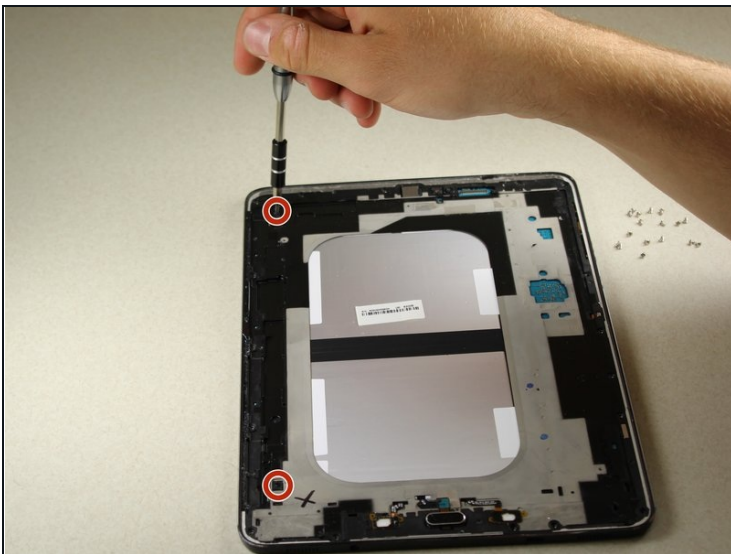
- Detach the connector from the inside of the device.
- Lift the screen to separate the front panel assembly from the rest of the device.

## Step 8 — Central Panel



- Remove the 17 silver 3.0 mm Phillips head screws located around the edge of the device using the screwdriver.
- ⓘ For additional information on how to remove screws, please refer to [Screwdriver Best Practices](#).

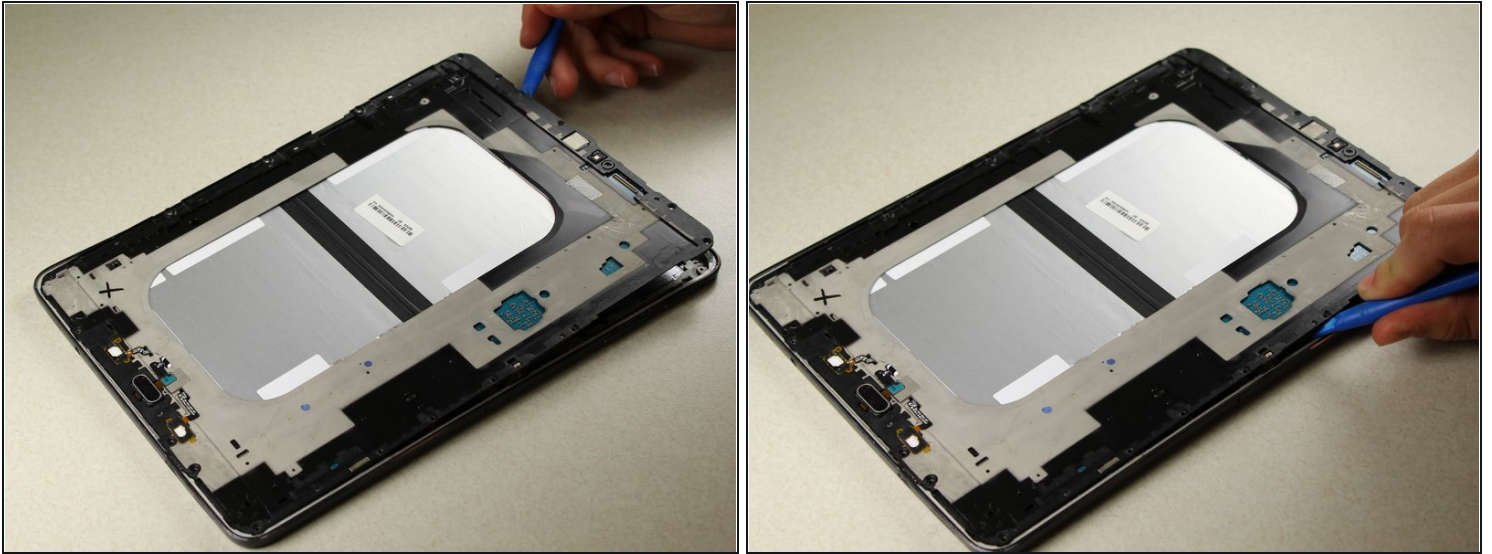
## Step 9



- Remove the 2 centrally-located black 3.0 mm Phillips head screws using the screwdriver.

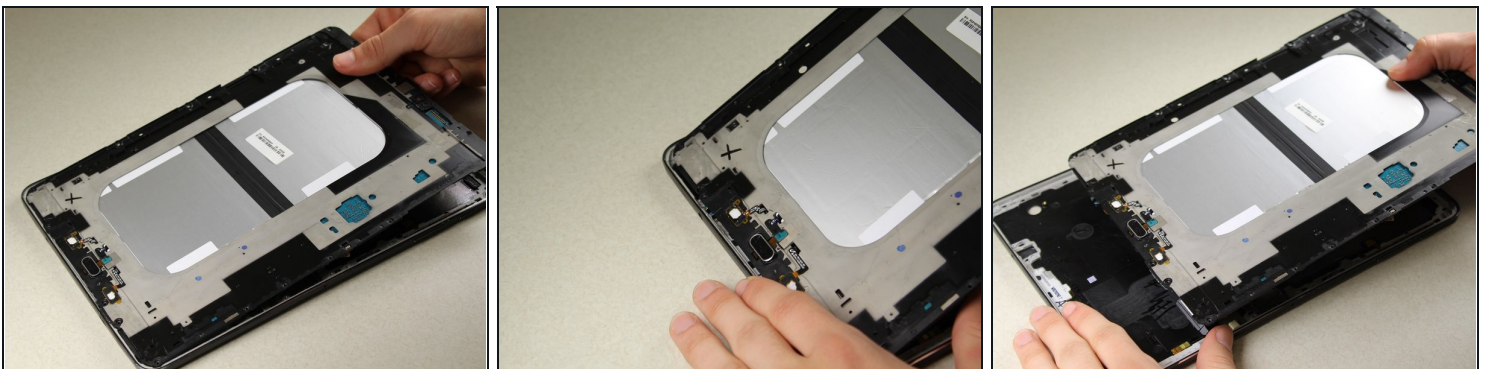


## Step 10



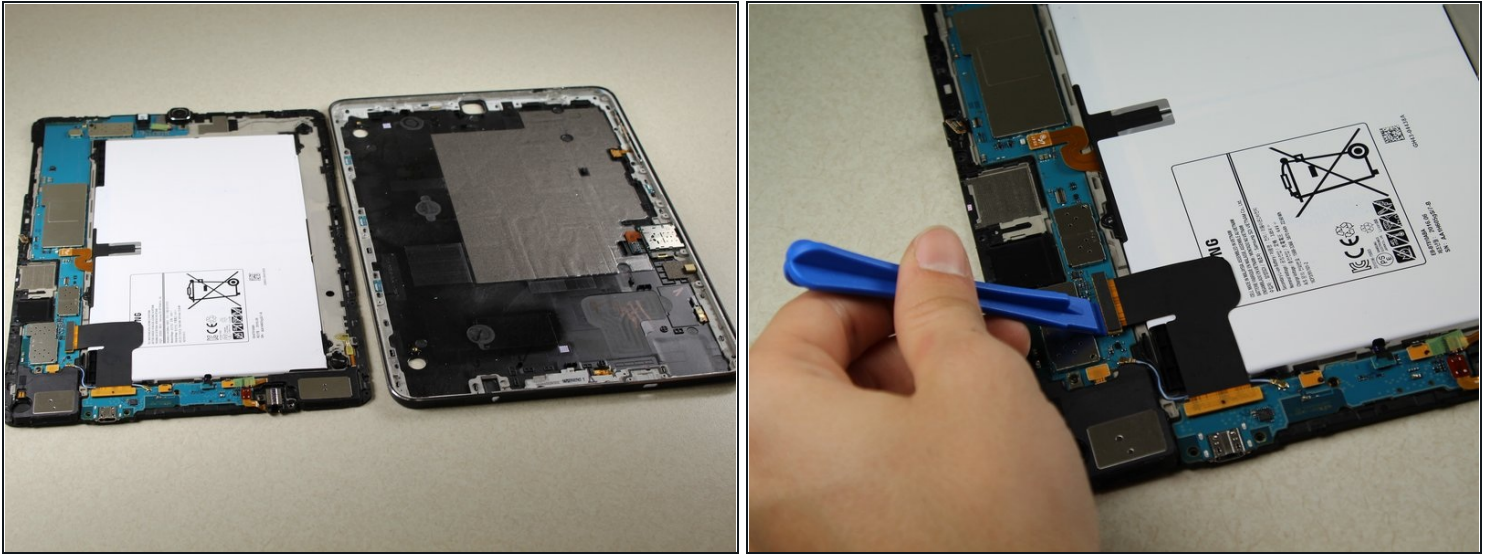
- Use the plastic opening tools to gently separate the middle panel from the rest of the device.
- Move the tool around under the edges until you can remove the panel by hand.
- ⓘ Popping/cracking noises are completely normal. These are the sounds of the panel separating from the rest of the device.

## Step 11



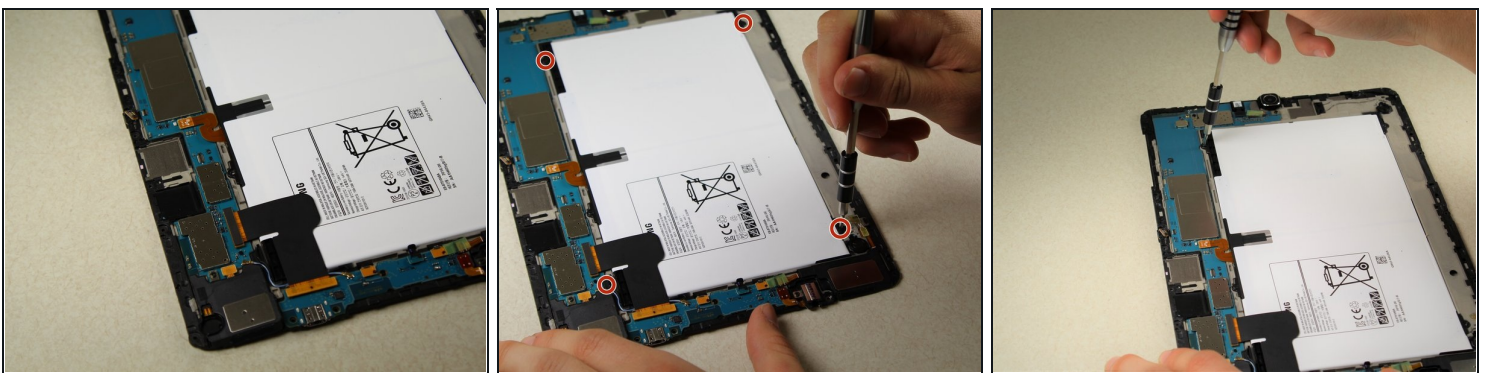
- Lift up the central panel starting from one corner to separate it from the rest of the device.
- Pull towards the top of the device as you lift out to ensure that the charging port connection is not damaged.

## Step 12 — Battery



- Position the central panel so the battery logo is facing up.
- Gently place the larger plastic opening tool under the ZIF connector on the bottom left of the device.
- Lift up to detach this connector from the panel.

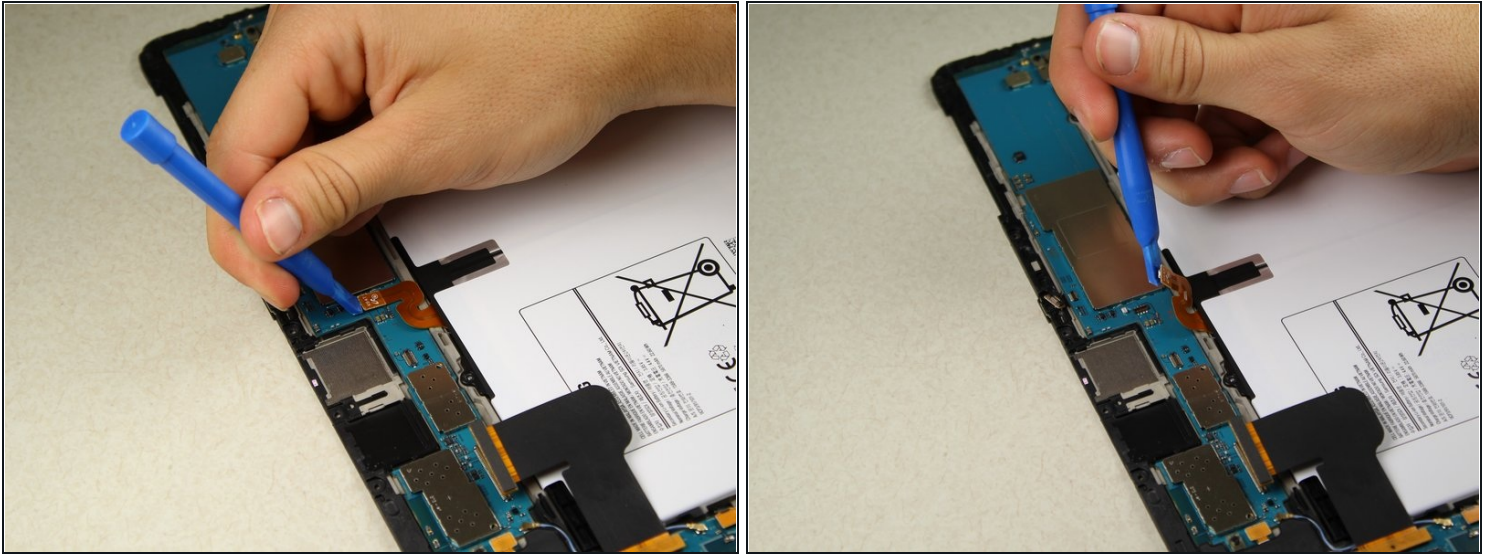
## Step 13



- Remove the 4 black 3.0 mm Phillips head screws from the corners of the battery housing using the screwdriver.

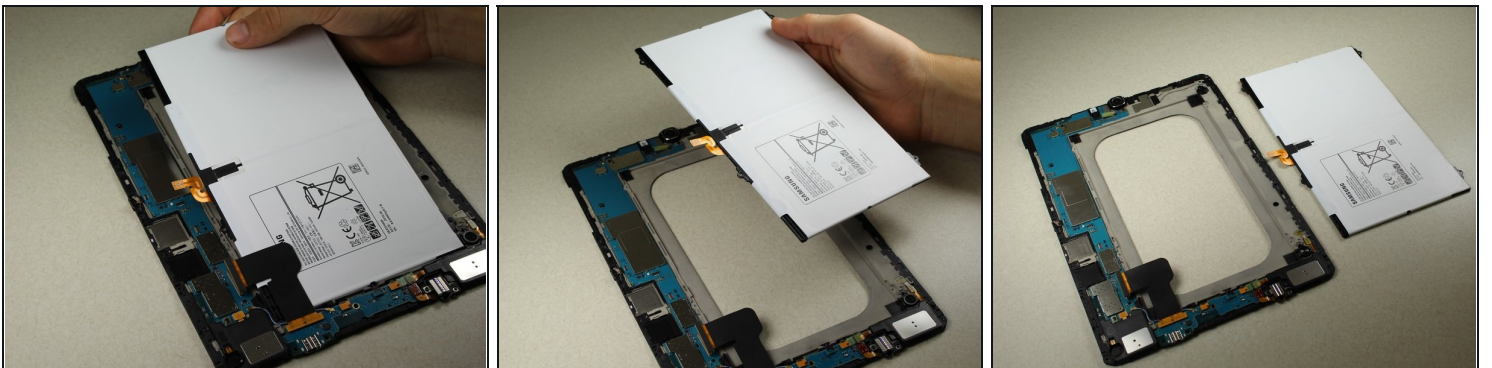


## Step 14



- Gently place the larger plastic opening tool under the cable connector and lift up to detach the connector from the panel.

## Step 15



- Gently lift the battery up from one corner using your hands to remove it from the rest of the central panel.

---

To reassemble your device, follow these instructions in reverse order.