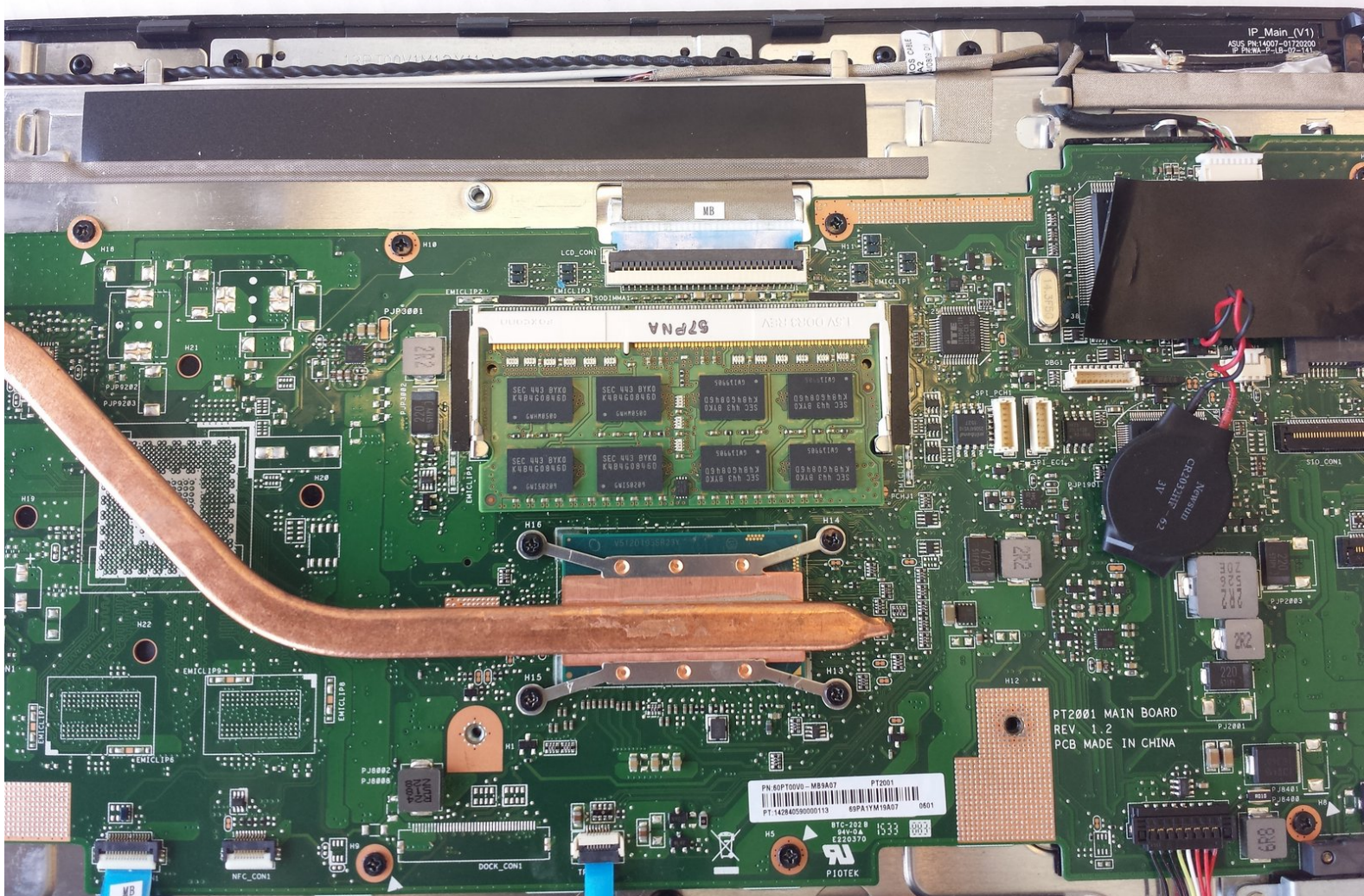




ASUS Portable AiO PT2001 RAM Replacement

How to replace the RAM in the ASUS Portable AiO PT2001.

Written By: Elliot Kane



INTRODUCTION

Replacing the RAM (Random-Access Memory) is one of the easiest operations to perform on this device. The only tools you need are plastic opening tools and a Phillips screwdriver to remove the back panel.

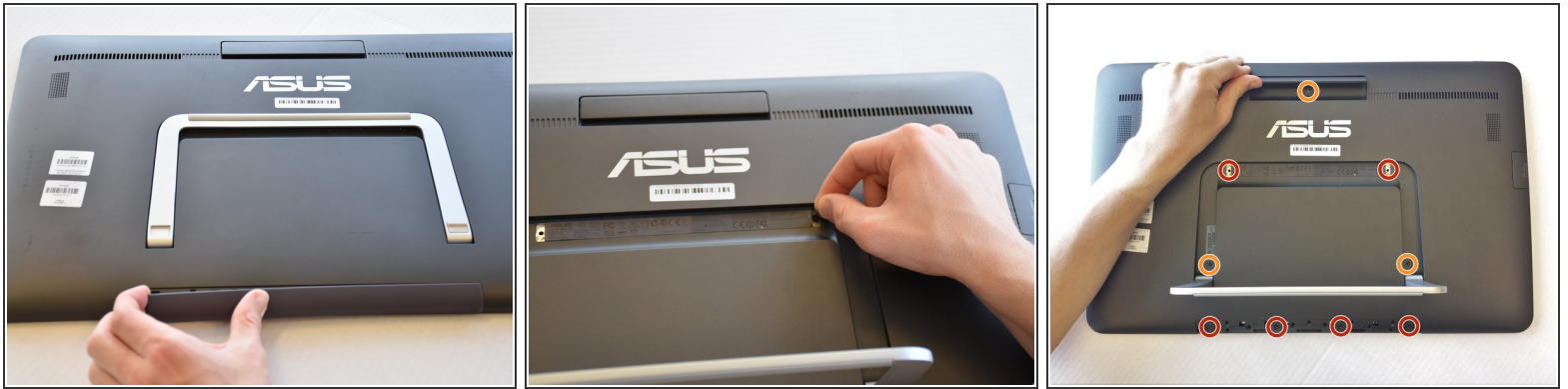
TOOLS:

- [Spudger](#) (1)
- [iFixit Opening Tools](#) (2)

At least one wide plastic opening tool.

- [Phillips #1 Screwdriver](#) (1)
-

Step 1 — Back Panel



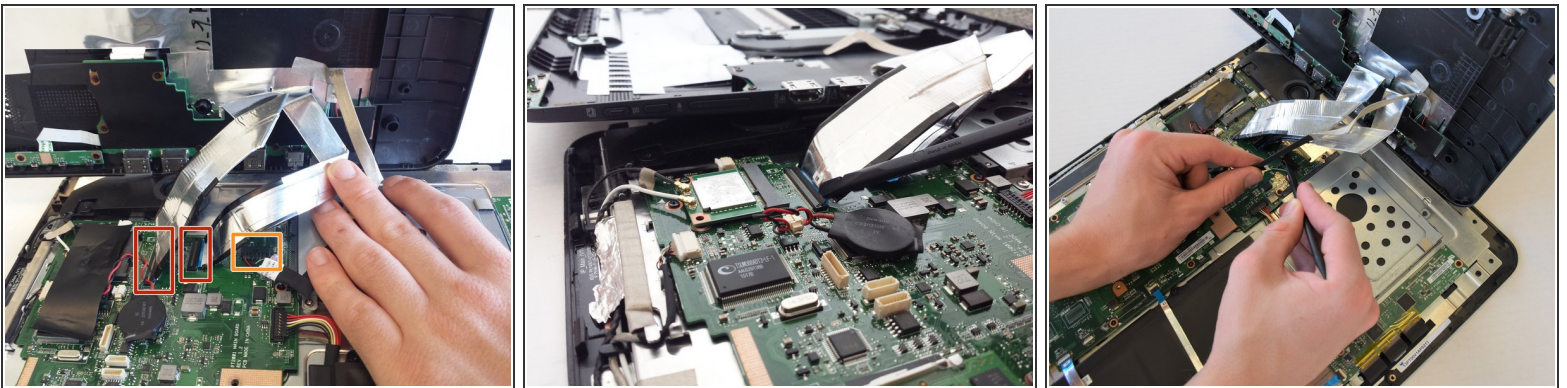
- Remove the grey scuff guard at the bottom of the PC by pressing down on it, and pulling it away.
- Lift the hinge and remove the grey rubber tabs on either side of the PC's model information.
- Remove the two 7.62mm Phillips #1 screws beneath the rubber tabs under the hinge and the four 7.62mm Phillips #1 screws where the scuff guard was removed.
- Remove the two 4.74mm Phillips #1 screws under the hinge (near the hinge joints) and a 4.74mm Phillips #1 screw under the handle.

Step 2



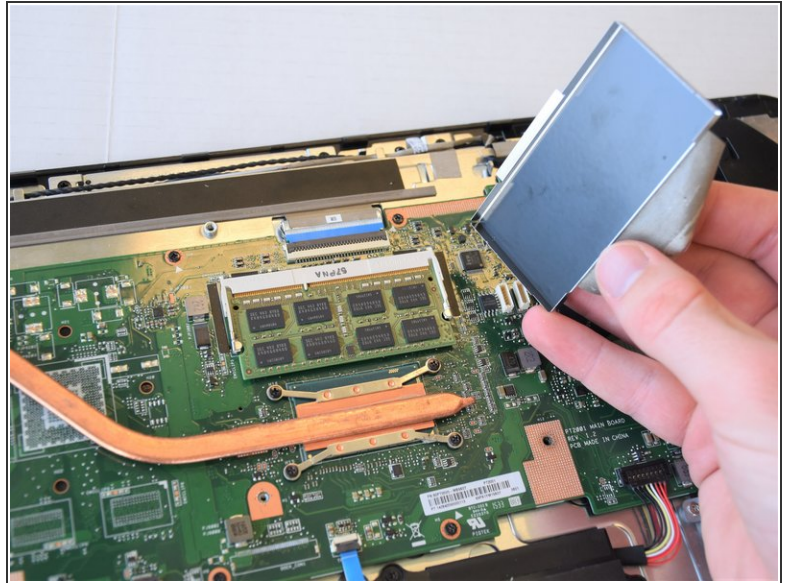
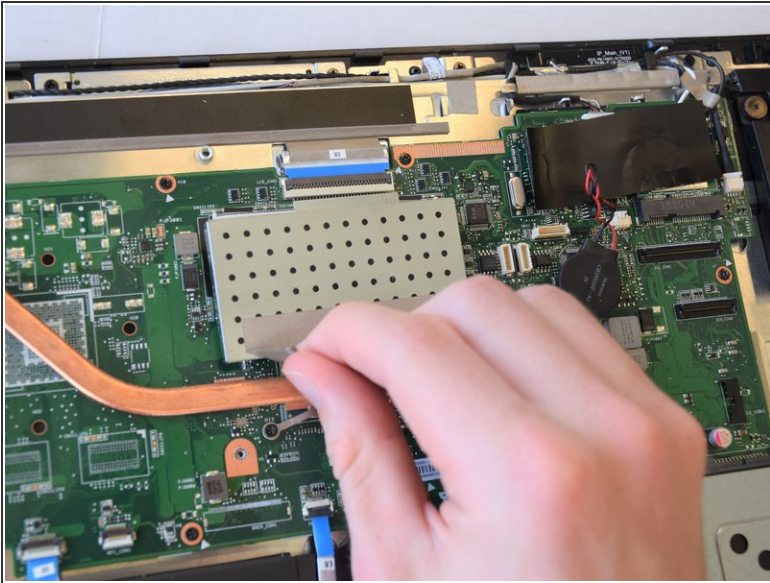
- Use 1-2 plastic opening tools or nylon spudgers to firmly pry open the back panel.
- ⓘ We recommend that you start prying the panel where the scuff guard was removed.
- ⓘ Prying the back panel will cause loud popping noises. This is just the sound of the clips that hold the back panel to the PC popping off.
- ⚠ Using excess force while prying can break the clips that hold the back panel and can damage the ports on the side of the PC.

Step 3



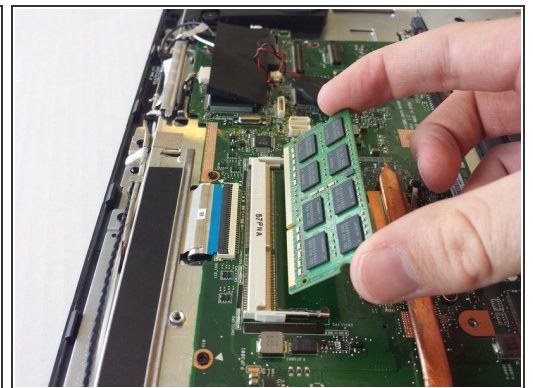
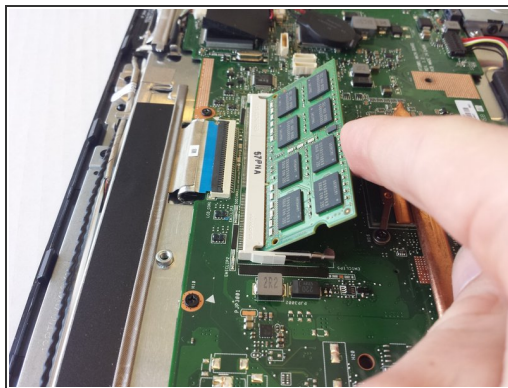
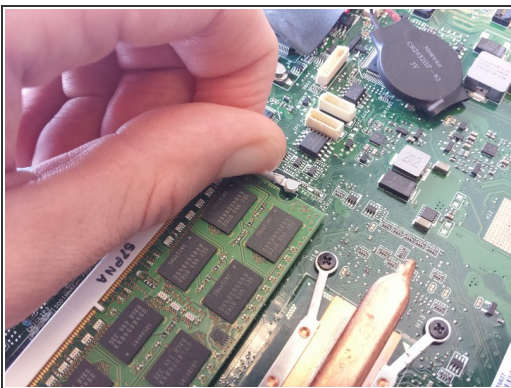
- Disconnect the three cables connecting the back panel ports to the motherboard.
- Flip up the locking latch holding the two ribbon cables with a plastic opening tool and pull the cables out.
- Gently wiggle the third connector out of its socket.

Step 4 — RAM



- Peel off the tape attaching the metal enclosure to the heat sink.
- Lift the metal enclosure off of the motherboard.

Step 5



- Pull the jaws of the white plastic frame apart. This will pop the front of the RAM up.
- Gently lift the front edge of the RAM.
- Pull the RAM out and up.

To reassemble your device, follow these instructions in reverse order.

This document was generated on 2020-11-28 06:46:14 AM (MST).

