



Huawei Mate 10 Pro Back Cover Replacement

This guide shows you how to replace the back cover of your Huawei Mate 10 Pro.

Written By: Dominik Schnabelrauch



INTRODUCTION

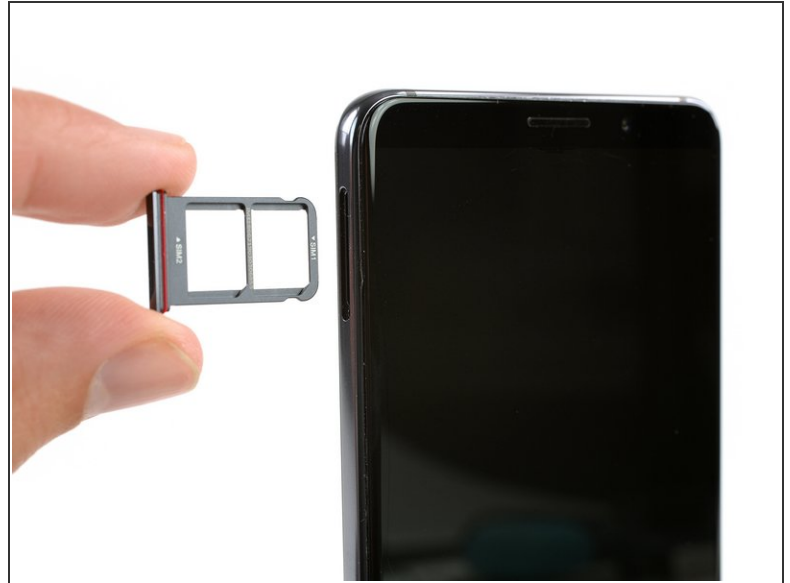
Use this guide to replace the back cover of your Huawei Mate 10 Pro.

If your battery is swollen, do not heat your phone. Swollen batteries can be very dangerous, so wear eye protection and exercise due caution, or take it to a professional if you're not sure how to proceed.

TOOLS:

- [Halberd Spudger](#) (1)
 - [Spudger](#) (1)
 - [iFixit Opening Picks set of 6](#) (1)
 - [Suction Handle](#) (1)
 - [Phillips #00 Screwdriver](#) (1)
 - [Tweezers](#) (1)
 - [SIM Card Eject Tool](#) (1)
 - [iOpener](#) (1)
-

Step 1 — SIM Card Tray



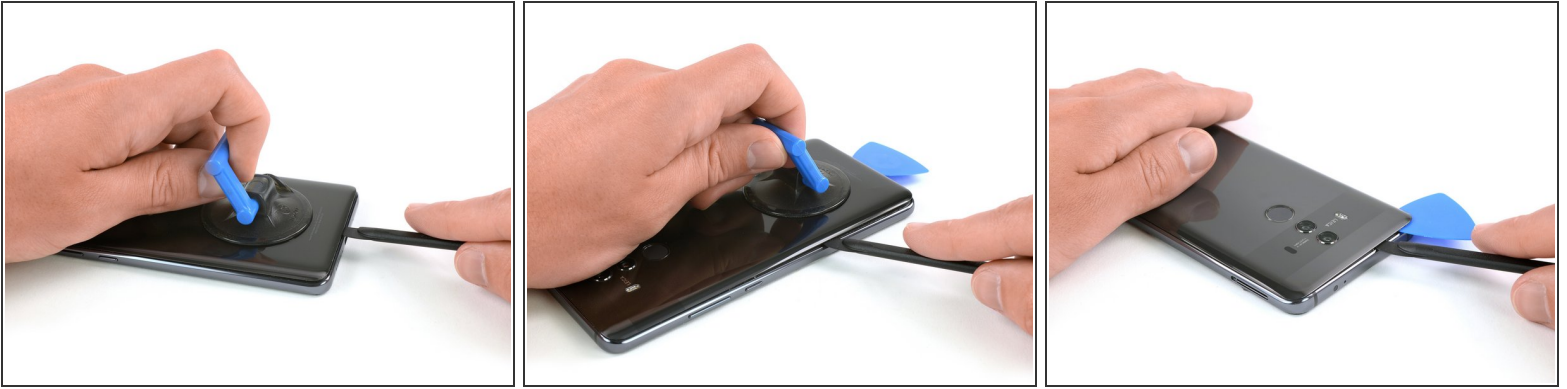
- Insert a SIM opening tool in the hole on the left side and push it in.
- Remove the SIM card tray.

Step 2 — Back Cover



- Switch off your phone.
- [Prepare an iOpener](#) and apply it to the back of the phone for about two minutes to loosen the adhesive beneath the back cover.


Step 3



- Lift up the back cover with a suction cup until you can insert the flat end of a halberd spudger.
- Use the halberd spudger to cut the adhesive beneath the back cover on all sides of the phone.
- ① Use opening picks to avoid the adhesive from sticking to the back cover again while cutting the adhesive on all sides.

Step 4



 Don't remove the back cover all the way, yet. The fingerprint sensor cable is still connected to motherboard.

- Flip the back cover over to the side.
- Remove the Phillips #00 screw which holds down the metal shield, sitting on top of the connection of the fingerprint sensor cable.

Step 5



- Use a pair tweezers to remove the metal shield covering the connector of the fingerprint sensor.
- Disconnect the fingerprint sensor cable with a spudger.
- ☑ When reassembling your phone apply new adhesive where it is necessary.

To reassemble your device, follow these instructions in reverse order.