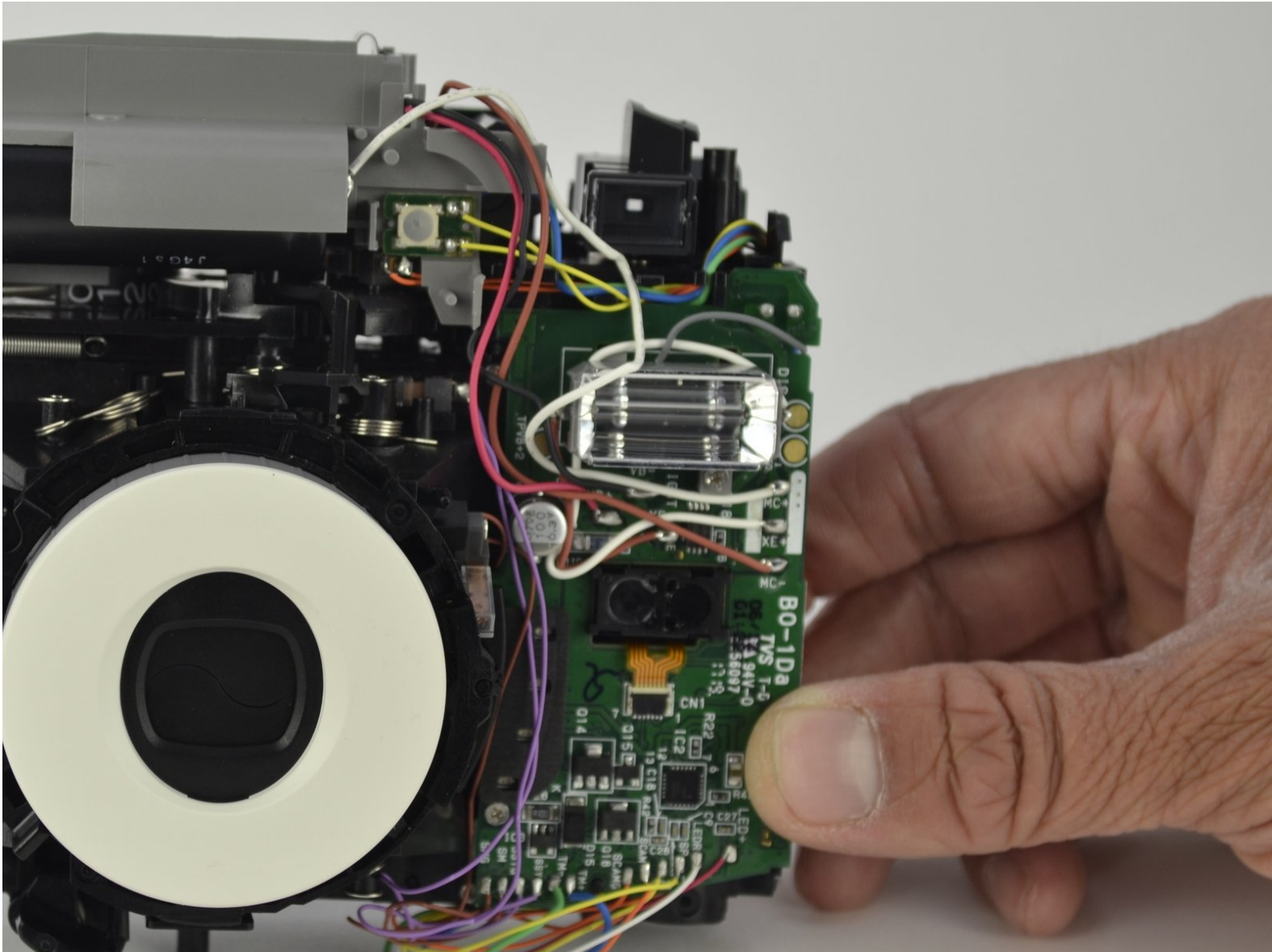




Fujifilm Instax Minion Flash Bulb Replacement

How to replace a Fujifilm Instax Minion flash bulb.

Written By: Jonnah Lee



INTRODUCTION

In this guide you will need two tools: a Phillips #00 screwdriver and a soldering iron. Take caution when taking out the bulb especially if the capacitor is in tact, you may get shocked if you touch it.

TOOLS:

- [Tweezers](#) (1)
 - [Phillips #00 Screwdriver](#) (1)
 - [Spudger](#) (1)
 - [iFixit Opening Tools](#) (1)
 - [Soldering Iron](#) (1)
-

Step 1 — Camera Shell



- Remove the six 4.5 mm #00 Phillips screws from the bottom, left, and right sides.

Step 2



- Use a spudger to remove the film slot guard on the top of the camera.
- Remove the one 4.5 mm #00 Phillips screw under the slot guard.

Step 3



- Press the release tab on the back of the camera to open the film compartment.
- Remove the film cartridge within this compartment.

Step 4



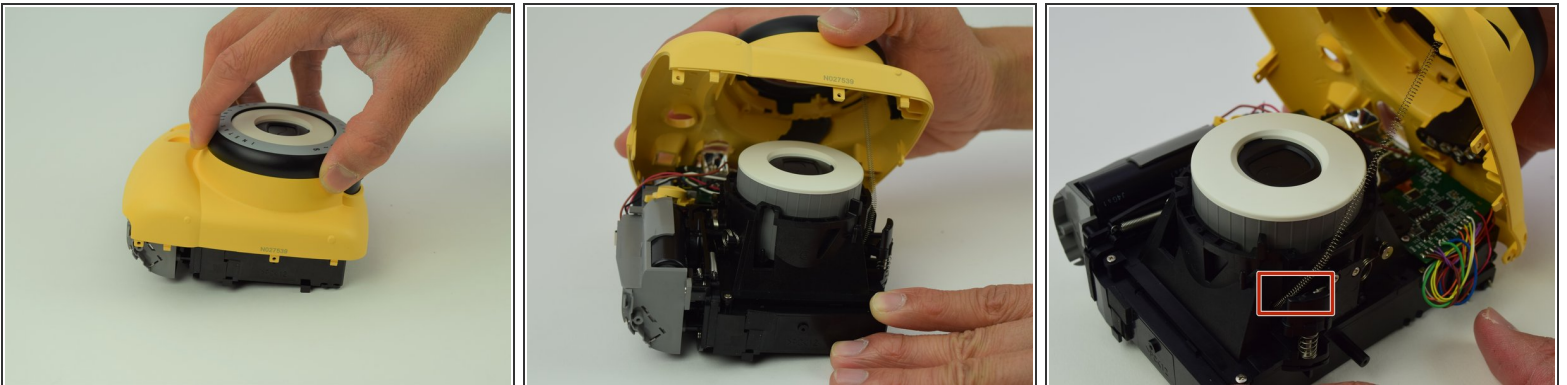
- Press the battery cover in and down to remove it.
- Remove any batteries within.

Step 5



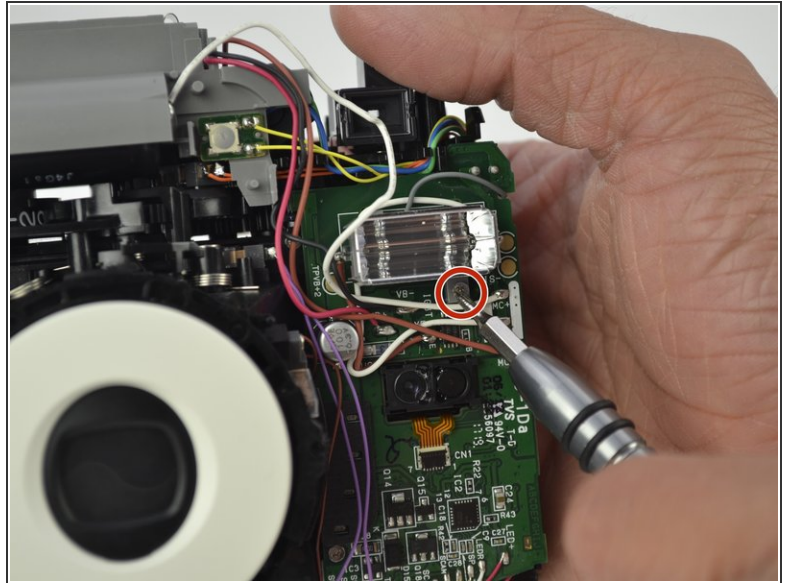
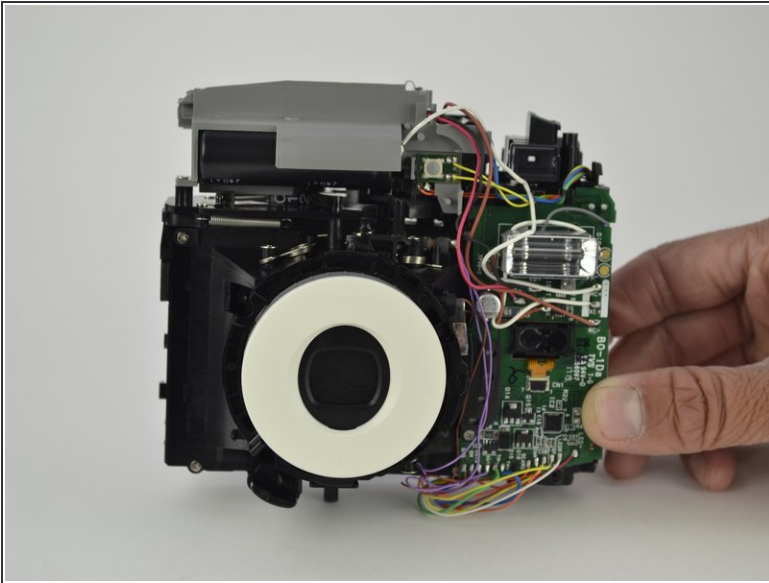
- Use a plastic opening tool to help pry the front and back shells apart.
- With the camera facing down, remove only the back shell.

Step 6



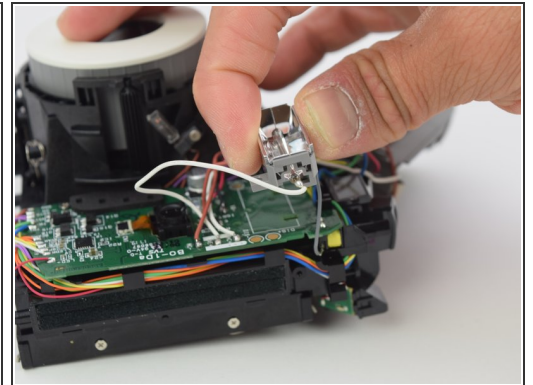
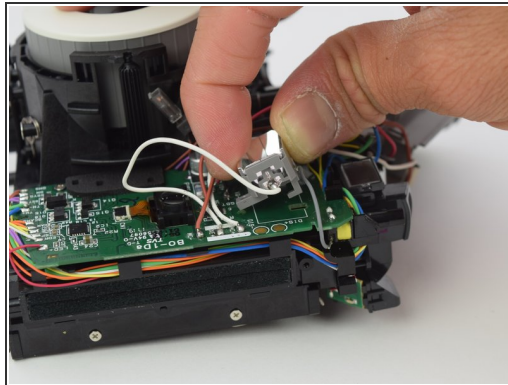
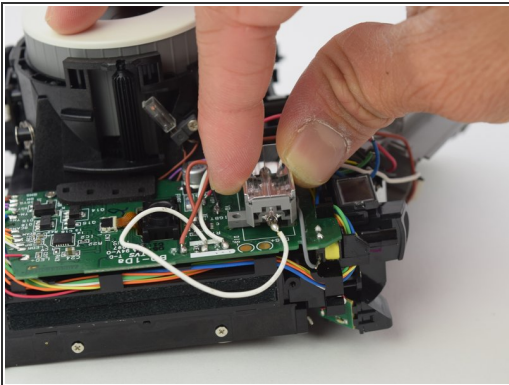
- Carefully peel the front side of the shell away.
- ❗ As you lift the front shell, be careful to not pull too hard since there is a spring attached to the shell and the camera body.
- Using a set of tweezers, detach the spring from the body. The spring will retract into the black and gray ring on the front shell.

Step 7 — Flash Bulb



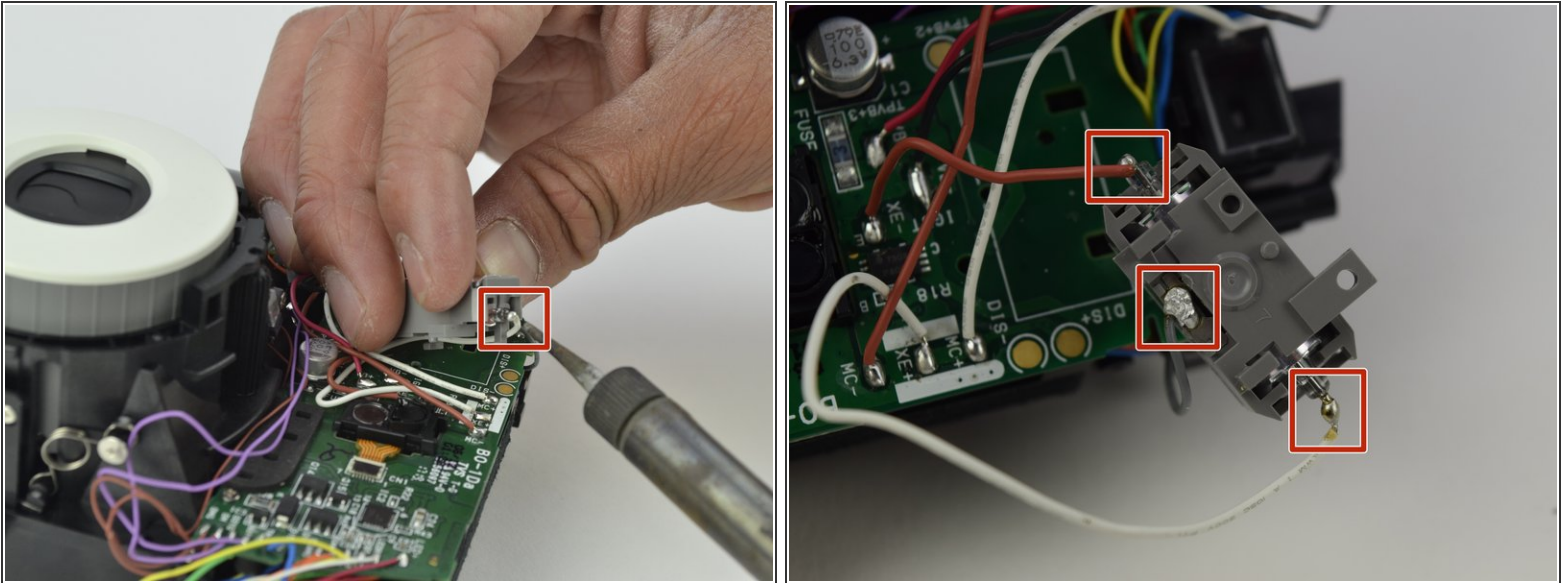
- Once the shell is off, remove the one 6.5 mm screw that is attached to the flash bulb using a Phillips #00 screwdriver.

Step 8



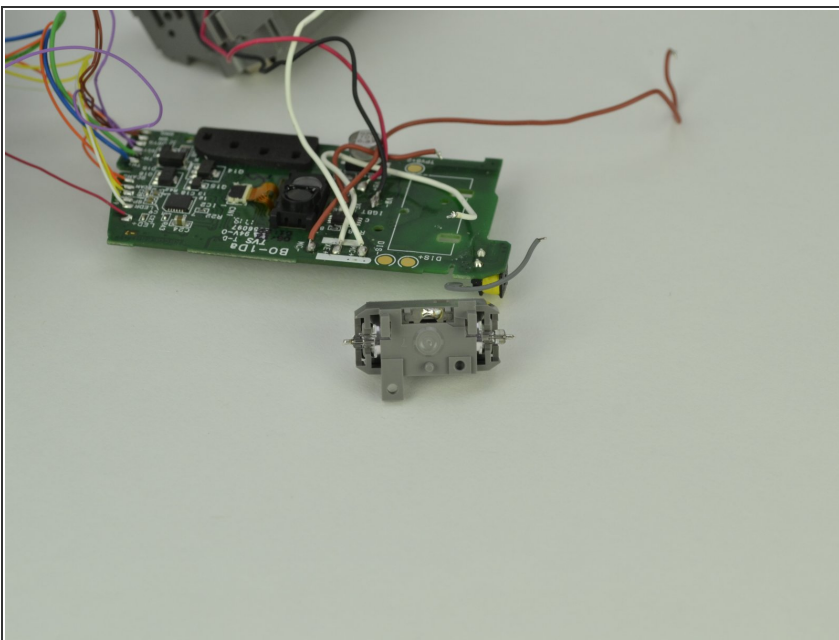
- Remove the flash bulb from the circuit board by shifting it towards the side with the motor and lifting.

Step 9



- Place the bulb over an open surface and use the soldering gun to melt the three connections off the bulb.
- ☑ During reassembly, use the picture to attach the correct wire to the correct connection on the bulb (white-right, gray-top, brown-left).

Step 10



- The flash bulb should now be detached completely from the circuit board.

To reassemble your device, follow these instructions in reverse order.