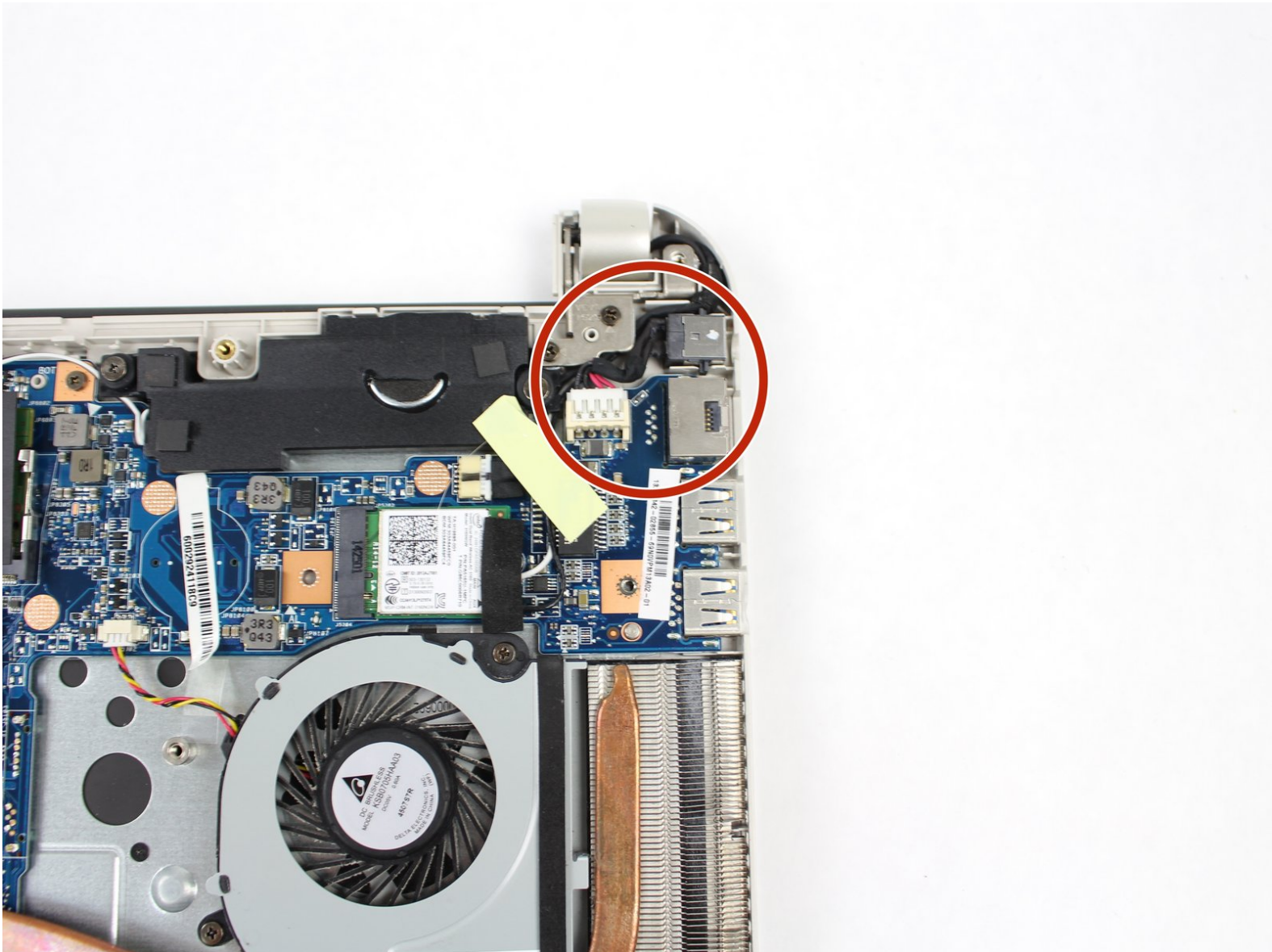




# Toshiba Satellite E45t-B4204 Charging Port Replacement

The charging port is one of the most used ports in a laptop. This port can easily be broken.

Written By: Eduardo



---

## INTRODUCTION

This is a quick guide on how to replace the charging port of a Toshiba Satellite E45t-B4204. Replacing the charging port can fix a charging port due to excessive use.

---



### TOOLS:

- [Phillips #1 Screwdriver](#) (1)
  - [Spudger](#) (1)
-

## Step 1 — Back Case



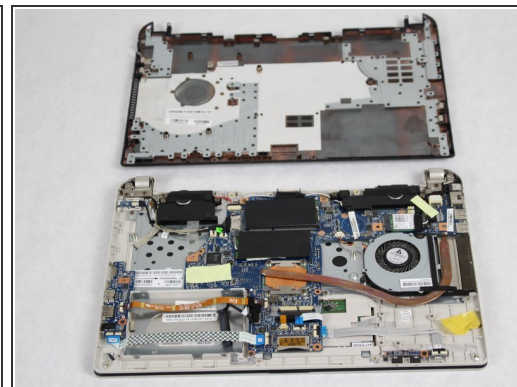
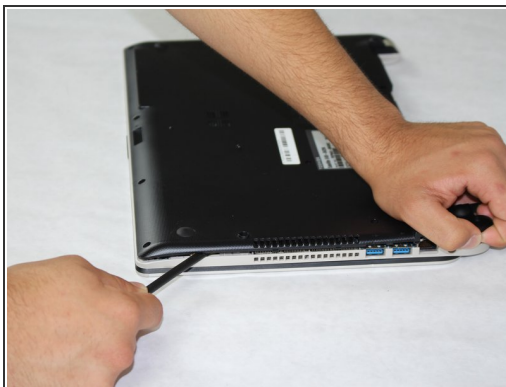
- Remove all 14 of the 4 mm screws on the back side of the laptop with a Phillips #1 screwdriver.

## Step 2



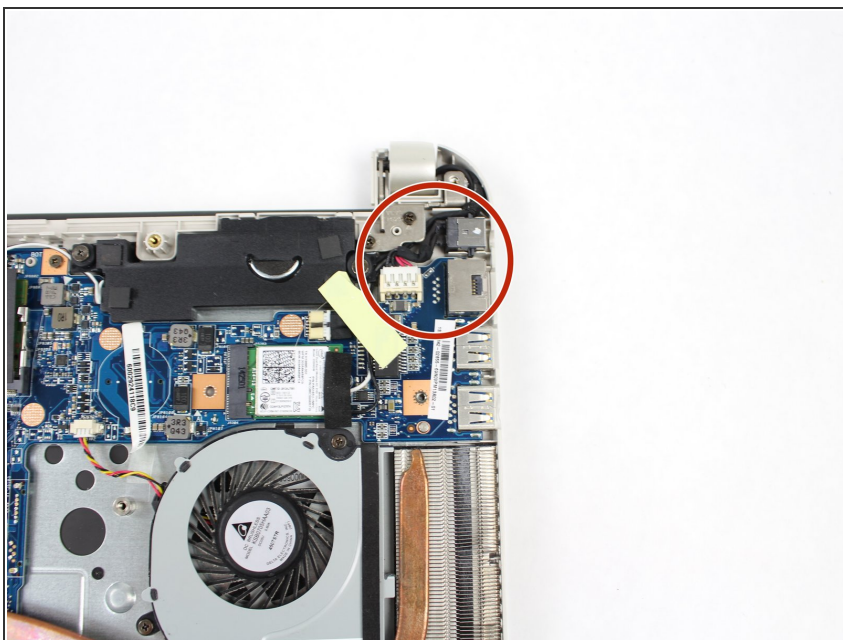
- Gently pull out the battery.

## Step 3



- Lift up in the spaces left by the battery to create a gap between the back case and the laptop body.
- Run a spudger along both sides of the laptop to widen the separation and release the clips holding the back case on.
- Remove the back case.

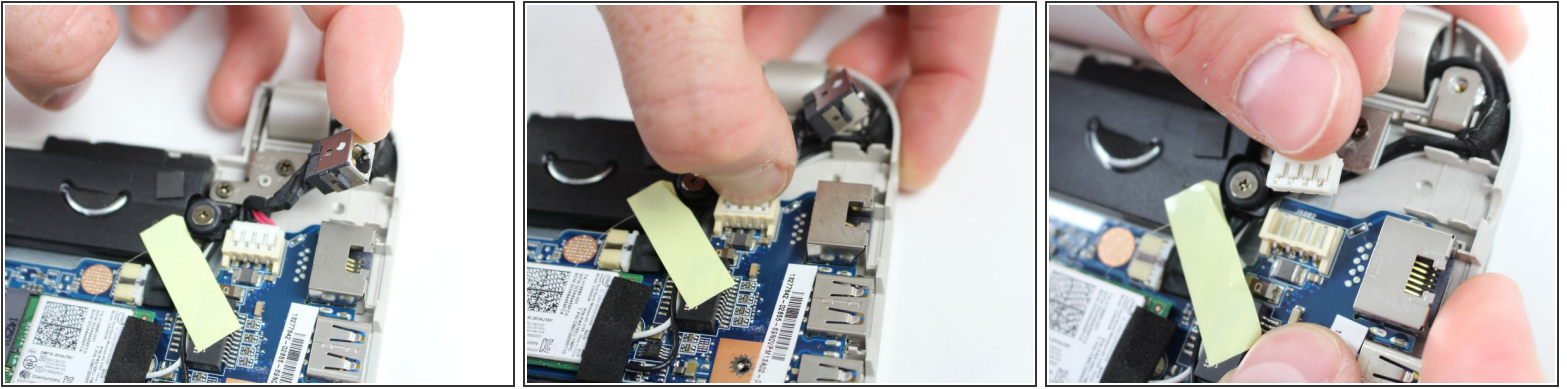
## Step 4 — Charging Port



- Locate the charging port housing.



## Step 5



- Unplug the charging plug housing from the motherboard.

To reassemble your device, follow these instructions in reverse order.