



Dell Precision M2800 Hard Drive Replacement

Written By: Johnathan Hammond





TOOLS:

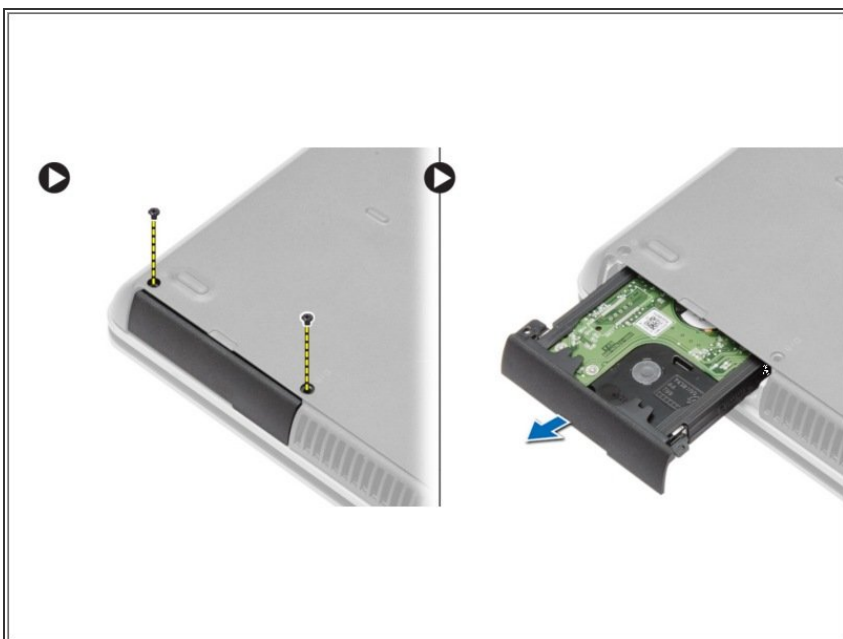
- [Phillips #0 Screwdriver](#) (1)
-

Step 1 — Battery



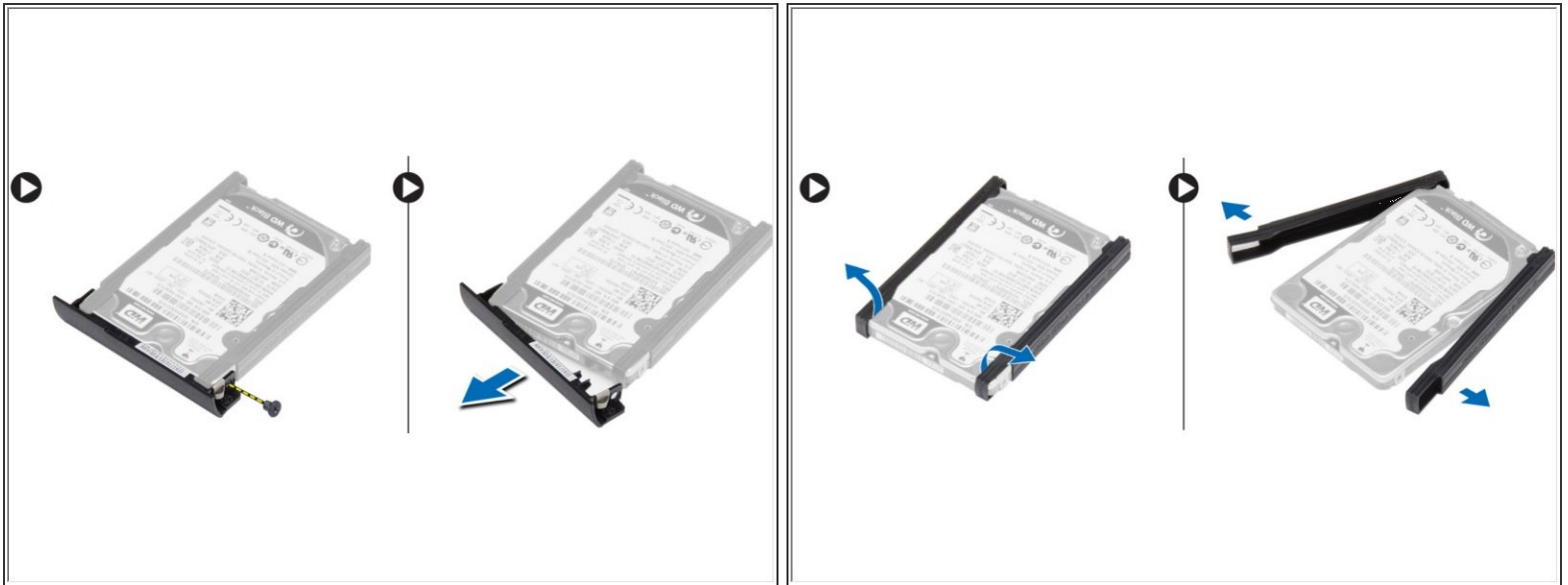
- Slide the release latches to unlock the battery.
- Flip the battery out of the computer.

Step 2 — Hard Drive



- Remove the screws that secure the hard drive to the computer. Slide the hard drive out of the computer.

Step 3



- Remove the screw that secures the hard-drive caddy to the hard drive. Remove the hard-drive caddy from the hard drive.
- Flex the hard-drive isolation. Peel off the hard-drive isolation from the hard drive.

To reassemble your device, follow these instructions in reverse order.