



# Toshiba Satellite P855-S5102 Hard Drive Replacement

Replace your Toshiba Satellite P855-S5102 Hard Drive to prevent slow processing and freezing.

Written By: Benson Smith



---

## INTRODUCTION

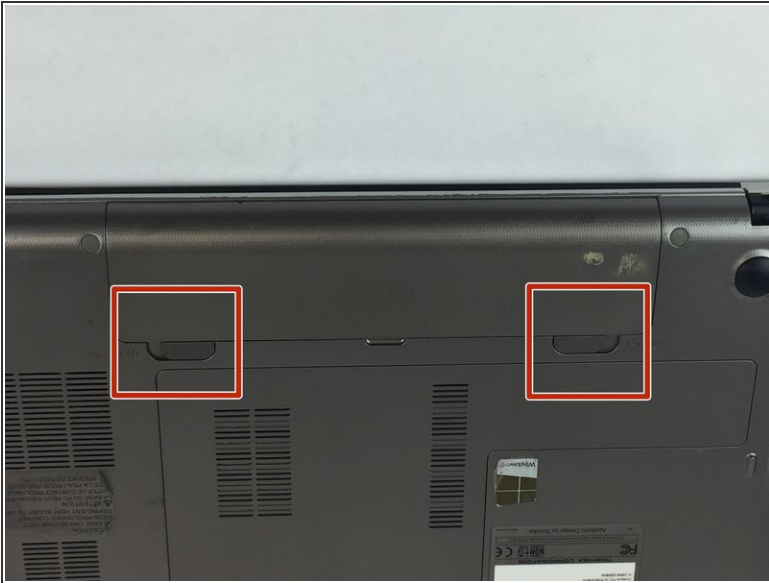
The laptop's Hard Drive is where data is permanently stored and retrieved on the computer. A good Hard Drive keeps the computer running smoothly. Below are a few steps on how to effectively remove the Hard Drive.



### TOOLS:

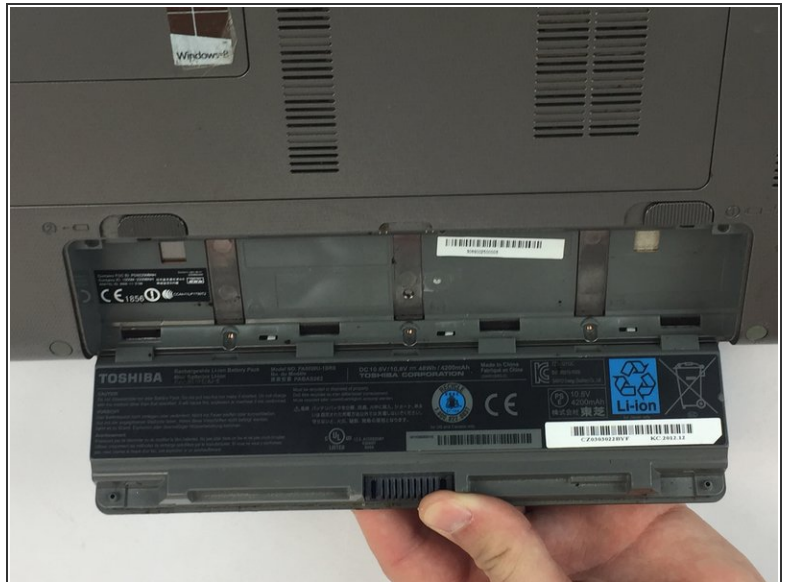
- [Phillips #0 Screwdriver](#) (1)
  - [iFixit Opening Tools](#) (1)
-

## Step 1 — Battery



- Push the locking tabs away from each other.

## Step 2



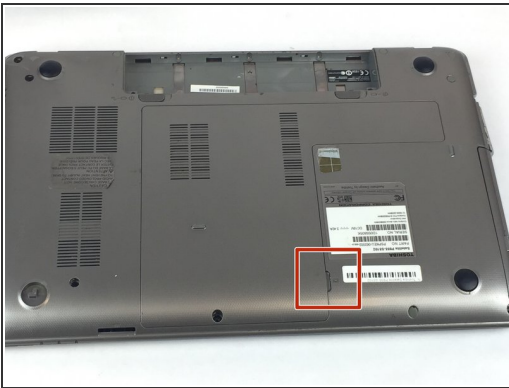
- Pull up on the battery to remove.

## Step 3 — RAM



- Remove the 3mm Phillips #0 screw from the cover.

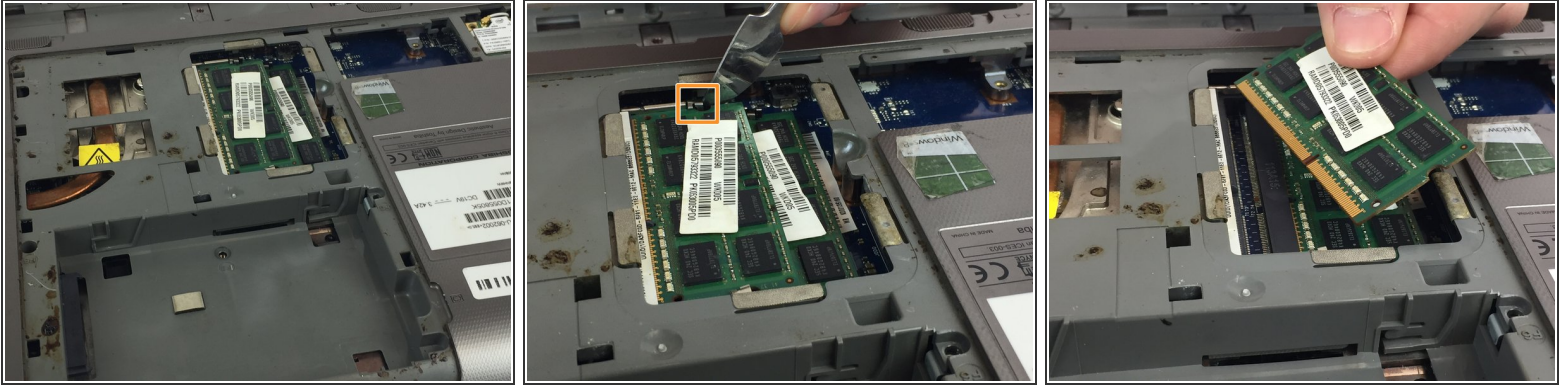
## Step 4



- Use a plastic opening tool to lift up the cover and remove by hand.



## Step 5



- Two clips secure the RAM module in place, one on each side. Using your fingers, spread the clips away from the RAM module.
- ❗ When released, the RAM module will pop up at a slight angle.
- Lift the RAM module to an angle of about 30 degrees and slide it out.

## Step 6 — Hard Drive



- Remove the three 3mm Phillips #0 screws from the hard drive.
- Remove the hard drive.

To reassemble your device, follow these instructions in reverse order.