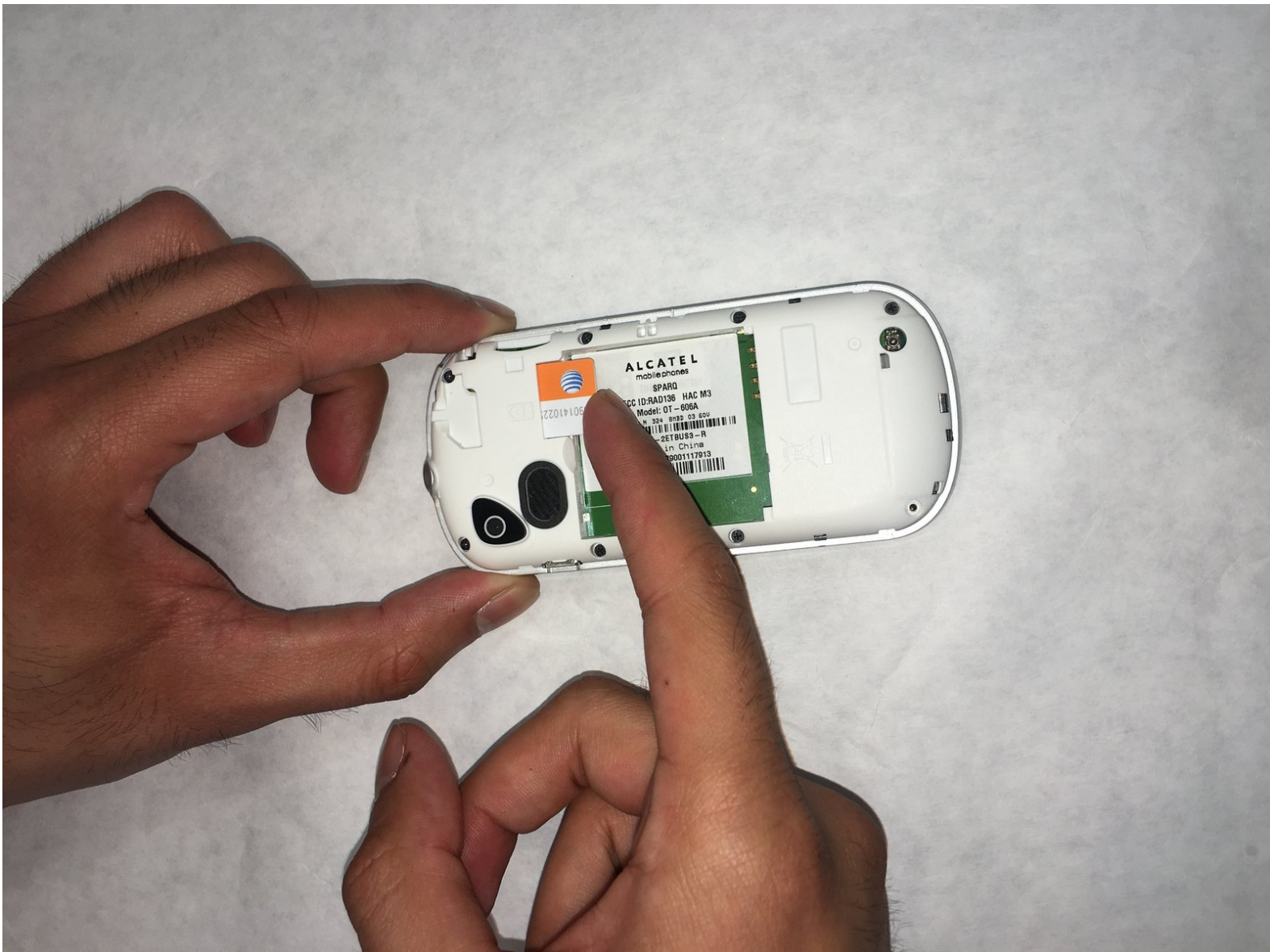




T-Mobile Sparq SIM Card Replacement

How to replace the SIM card on a T-Mobile Sparq / Alcatel 606a.

Written By: LeAnn Lewis



INTRODUCTION

This guide will show you how to replace the SIM card in a T-Mobile Sparq (or Alcatel 606a). It's a pretty simple process that involves removing the back cover of the phone, removing the battery and then taking out the SIM card for replacement - no serious disassembly required!

TOOLS:

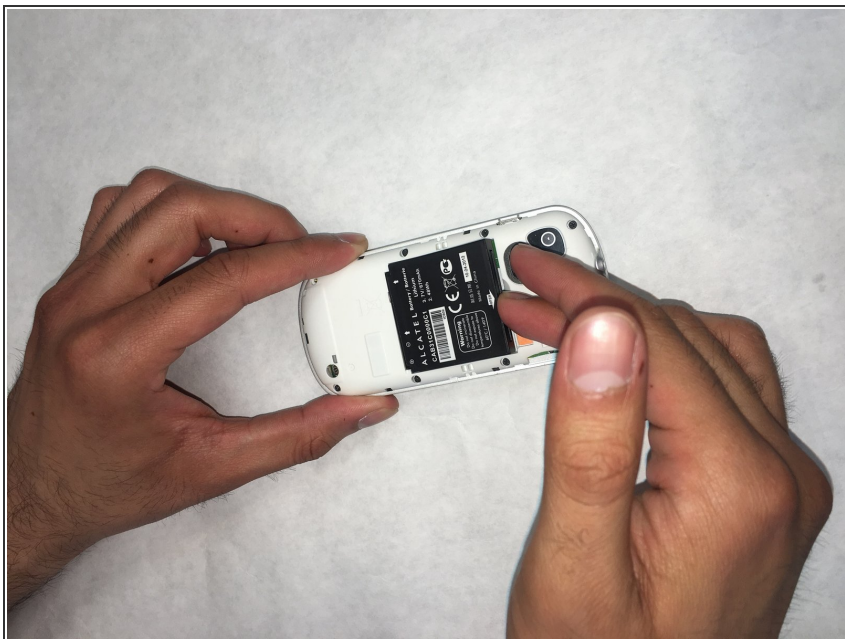
- [Spudger](#) (1)
-

Step 1 — Battery



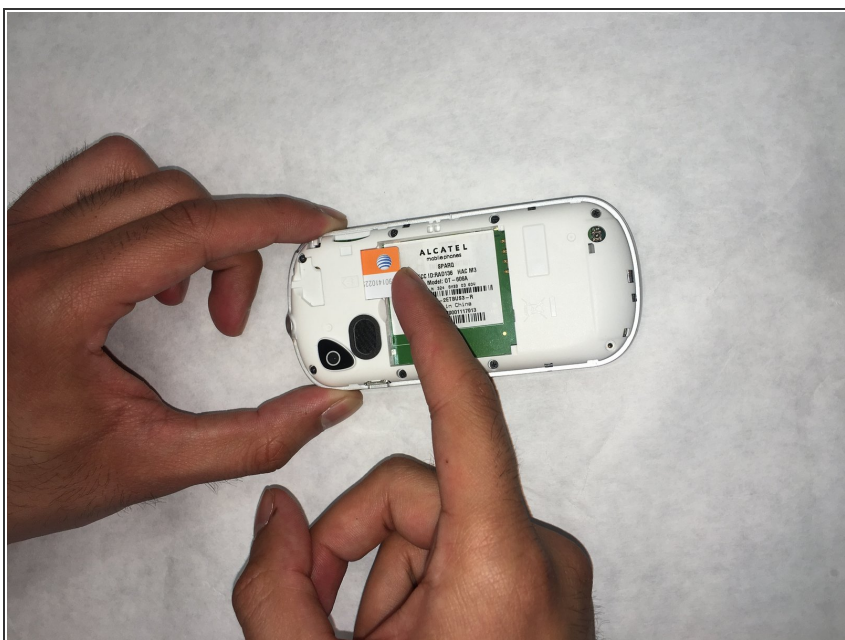
- If you're looking at your phone from the front, feel the upper left hand rounded corner. You'll notice a thin opening between the front of the phone and the back cover.
- Flip the phone over (as in the picture) and use a spudger or your finger to gently separate the back cover from the phone.

Step 2



- Once the back cover has been removed you can see a small groove above the center of the battery. The arrow on the battery is pointing to it.
- Insert the tip of your finger into the groove and gently lift the battery from the case.

Step 3 — SIM Card



- Once the battery has been removed the SIM card is easily accessible. Press your finger gently on top of

the exposed SIM card and slide it in the direction of the battery compartment until it comes out.

To reassemble your device, follow these instructions in reverse order.