



Dell Inspiron 14R-5421 Battery Replacement

Hello, this guide will inform you how to remove...

Written By: Jared paiva



INTRODUCTION

Hello, this guide will inform you how to remove the hard drive from your **Dell Inspiron 14R-5421**.

Before working on your device, remember the [electrostatic discharge \(ESD\) safety procedures](#) before fixing your device.

Removing your hard drive is faster and easier than one may think, so I would recommend putting aside a least 5 minutes in your day to complete this guide.

If you need to remove a hard, you may have issues with hardware damage or failure, resulting in overheating, system crashes, and file corruption among other things.

If you have read this far, then you have just completed one of the first steps in solving a problem, which is to identify a solution, so proceed with the below steps.

⚙️ PARTS:

[Dell DL-I5521X4 Battery \(1\)](#)

[Dell Inspiron \(3521/5421\) and Vostro 2421 11.1V Replacement Laptop Battery \(1\)](#)

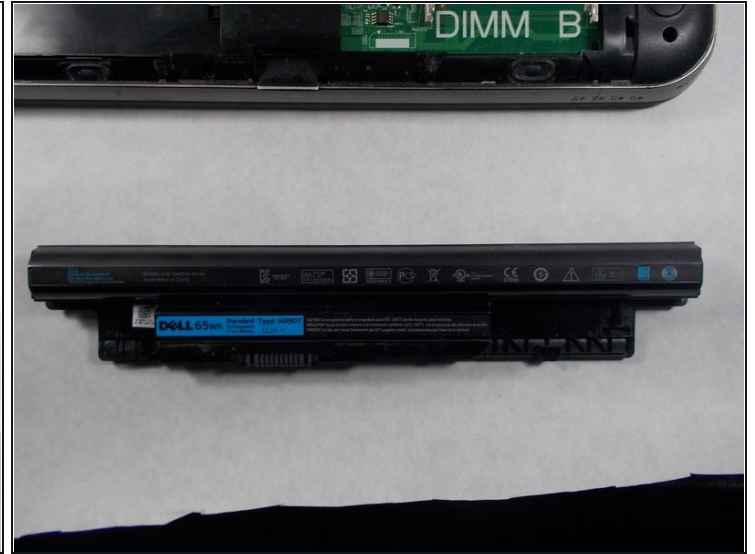
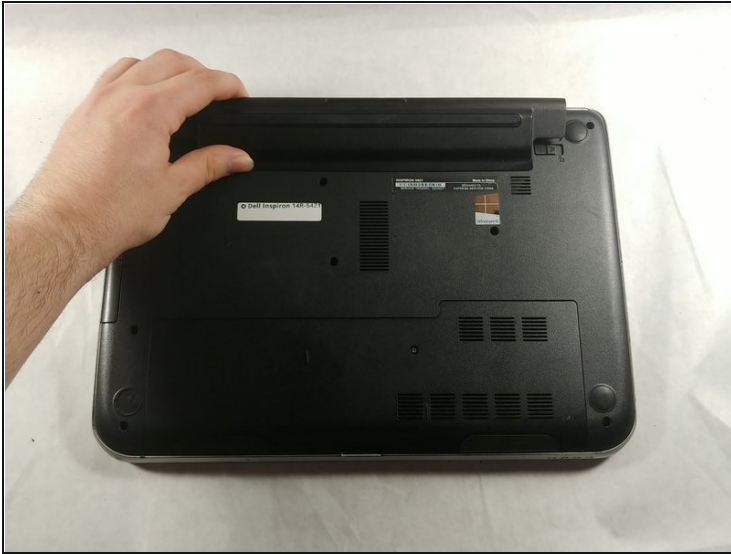
[Dell Inspiron \(3521/5421\) and Vostro 2421 14.8V Replacement Laptop Battery \(1\)](#)

Step 1 — Battery



- Push the two sliders away from the battery towards the outer edges.

Step 2



- Remove the battery when it pops up.

To reassemble your device, follow these instructions in reverse order.