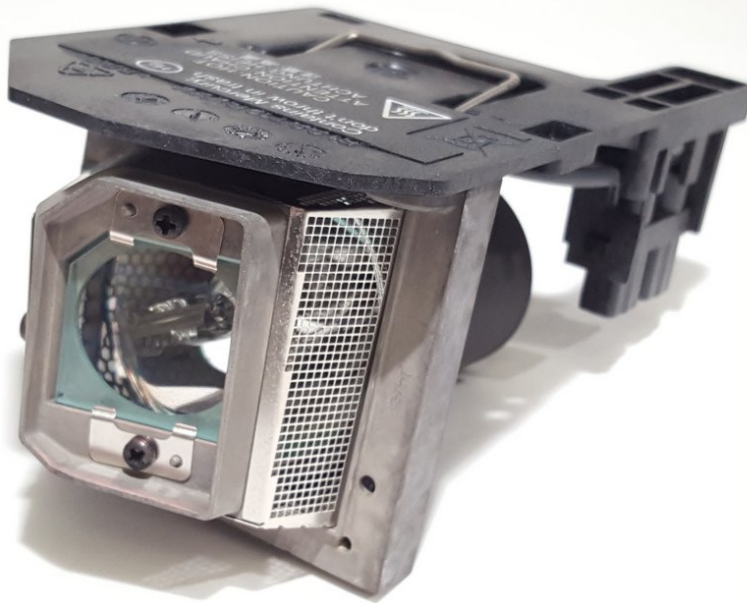




Toshiba TDP-XP2 Bulb Replacement

Bulb replacement for a digital Toshiba XP2 projector.

Written By: Bryan Underwood



INTRODUCTION

The bulb of a projector is only rated for a certain amount of hours, so when it reaches the end of its life the image will become fuzzy and eventually die out. This guide will show how to replace the bulb on this projector.



TOOLS:

- [Phillips #0 Screwdriver](#) (1)



PARTS:

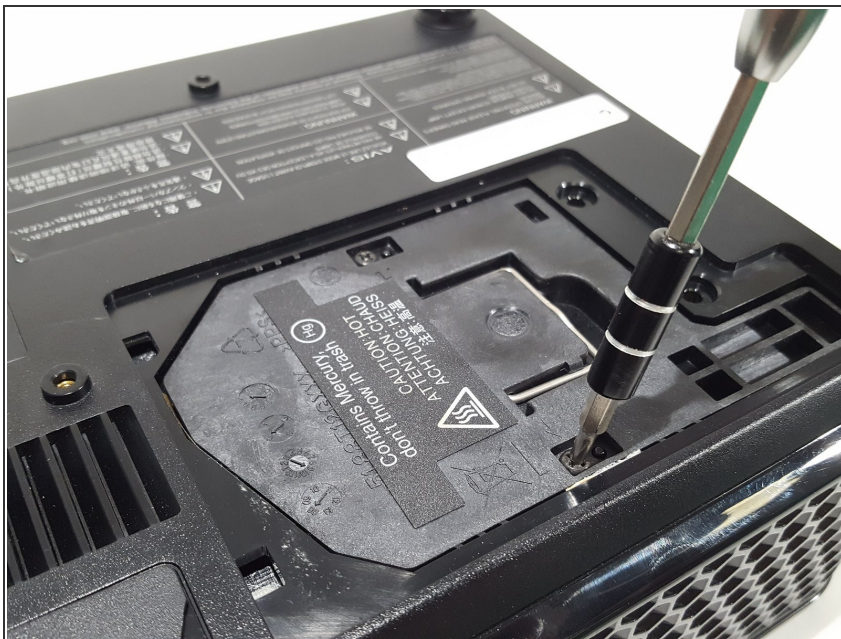
- [TLPLV10](#) (1)

Step 1 — Bulb



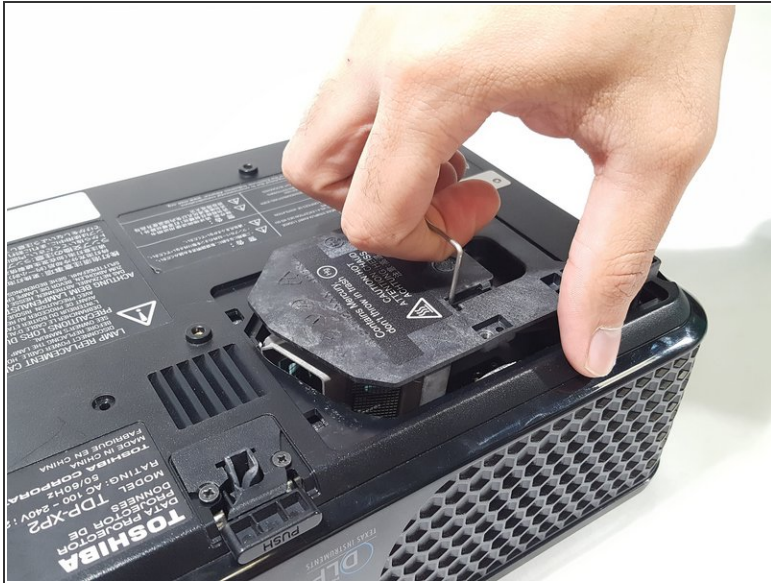
- Remove the two screws from the bottom plate as shown.

Step 2



- Remove the two screws on the bulb housing.

Step 3



- Pull the tab up and pull the bulb out vertically. Some force will be required, but it will come out.
- Replace the bulb with an equivalent one.

To reassemble your device, follow these instructions in reverse order.