



Dell Inspiron 1320 Display Assembly Replacement

Written By: Terrence15



INTRODUCTION

In this guide, we will show you how to remove and replace the Display Assembly.



TOOLS:

- [Phillips #0 Screwdriver](#) (1)
-

Step 1 — Disconnecting the Display Cable

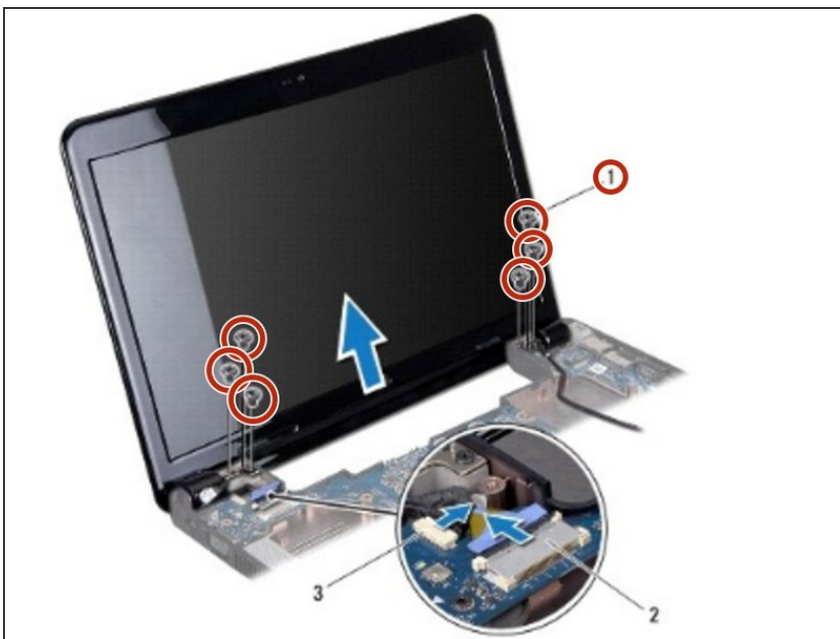


⚠ WARNING: Before working inside your computer, read the safety information that shipped with your computer. Follow the instructions in [Before You Begin](#).

⚠ CAUTION: To avoid electrostatic discharge, ground yourself by using a wrist grounding strap or by periodically touching an unpainted metal surface (such as a connector on your computer)

- Disconnect the display cable and the camera cable from their respective system board connectors.

Step 2 — Remove the Screws



- Remove the six screws (three on each side) that secure the display assembly to the computer base.

Step 3 — Dislodging the Antenna Cables



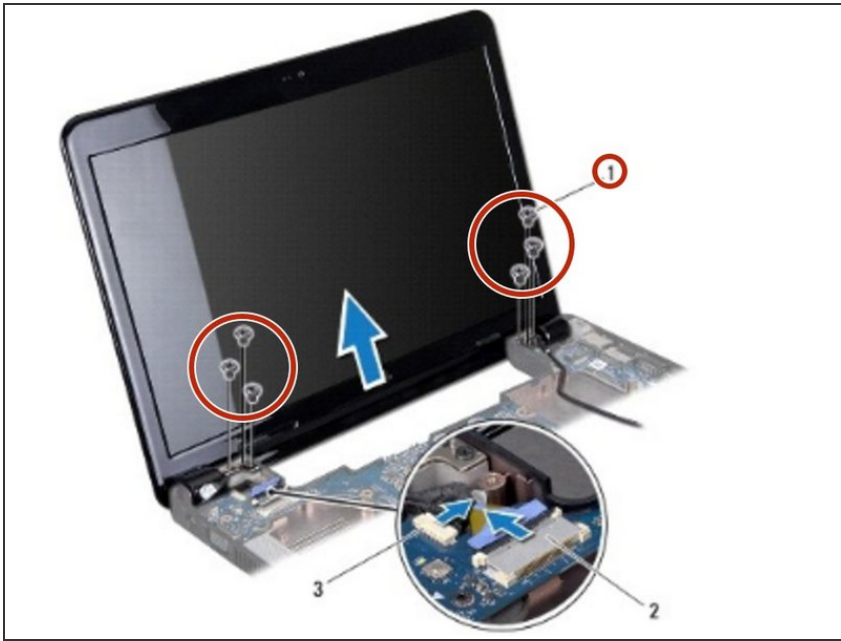
- Make note of the cable routing and carefully dislodge the Mini-Card antenna cables from the routing guides.

Step 4 — Lifting the Display Assembly



- Lift the display assembly off the computer.

Step 5 — Placing the Display Assembly



- Place the **NEW** display assembly in position and replace the six screws (three on each side) of the display assembly.

Step 6 — Routing the Antenna Cables



- Route the Mini-Card antenna cables through the routing guides.

Step 7 — Connecting the Display Cable



- Connect the display cable and the camera cable to their respective system board connectors.