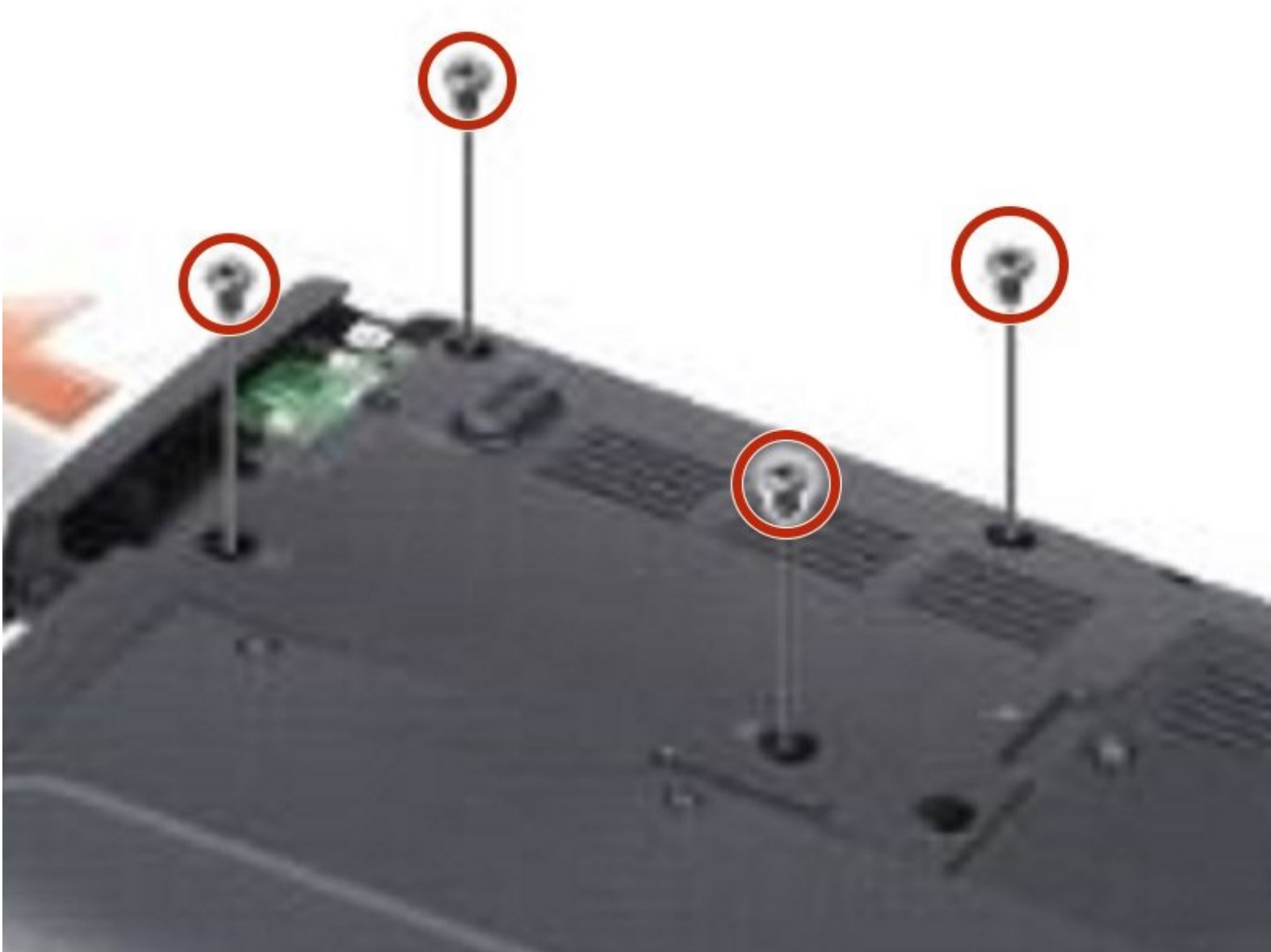




# Dell Inspiron 1318 Hard Drive Replacement

Written By: Terrence15



---

## INTRODUCTION

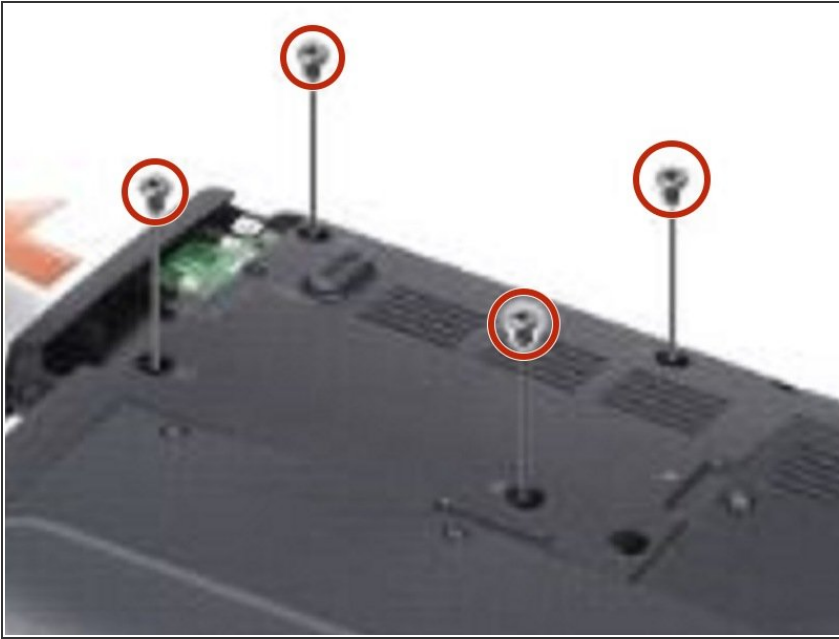
In this guide, we will show you how to remove and replace the Hard Drive.



### TOOLS:

- [Phillips #0 Screwdriver](#) (1)
-

## Step 1 — Remove the Screws

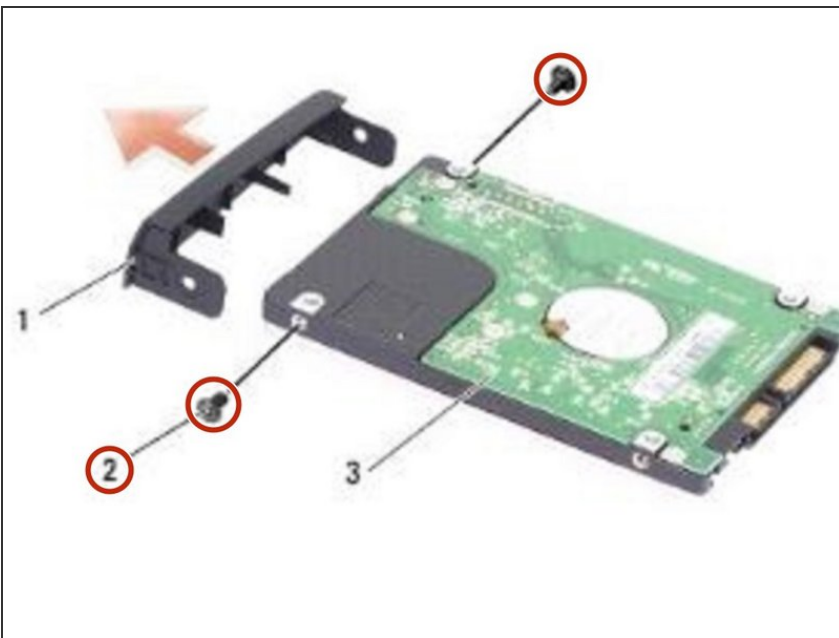


**CAUTION:** Before you begin any of the procedures in this section, follow the safety instructions shipped with your computer. Follow the procedures in [Before You Begin](#).

**NOTICE:** Hard drives are extremely fragile. Exercise care when handling the hard drive.

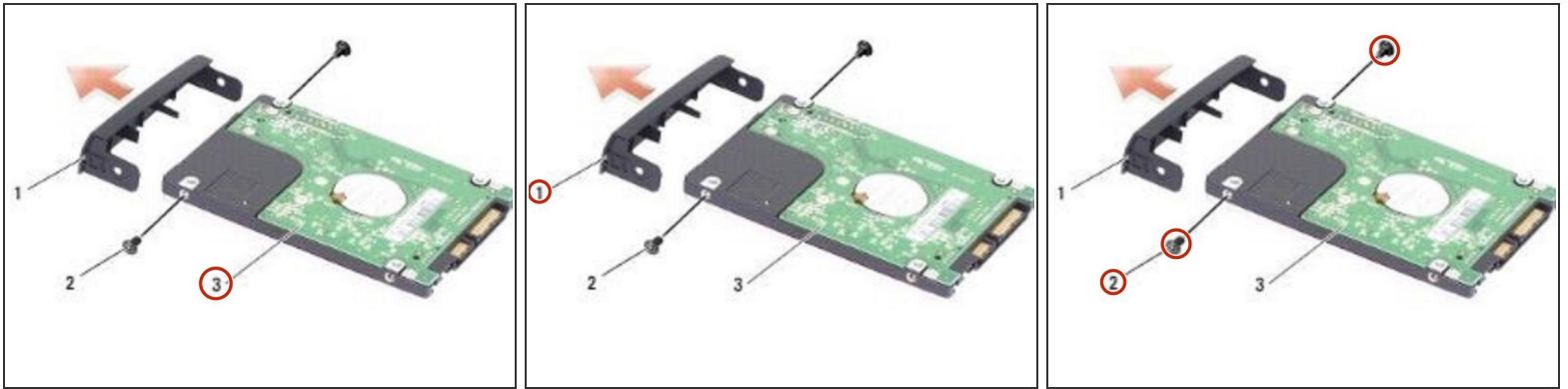
- Remove the four M3 x 3-mm screws and slide the hard drive away from the bay.

## Step 2 — Remove the Screws



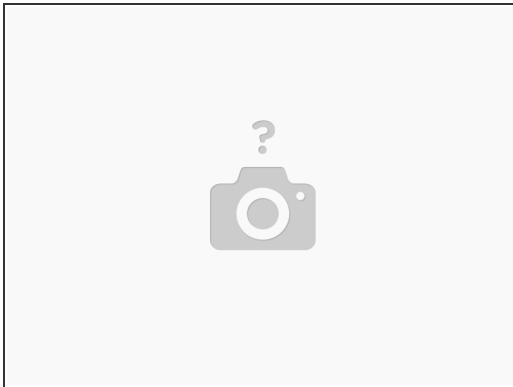
- Remove the two screws from either side of the hard drive bracket and pull the hard drive away from the bracket.

### Step 3 — Placing the Hard Drive



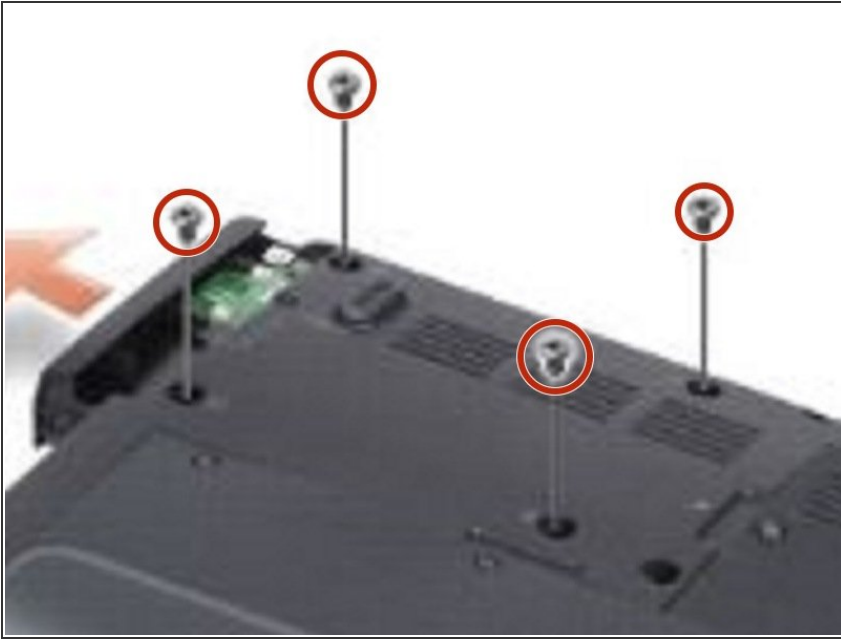
- Place the **NEW** hard drive in the bracket and replace the two M2 x 3-mm screws on either side.

### Step 4 — Sliding the Hard Drive



- Slide the hard drive into the bay.

## Step 5 — Replace the Four Screws



- Replace the four M3 x 3-mm screws on the hard drive.