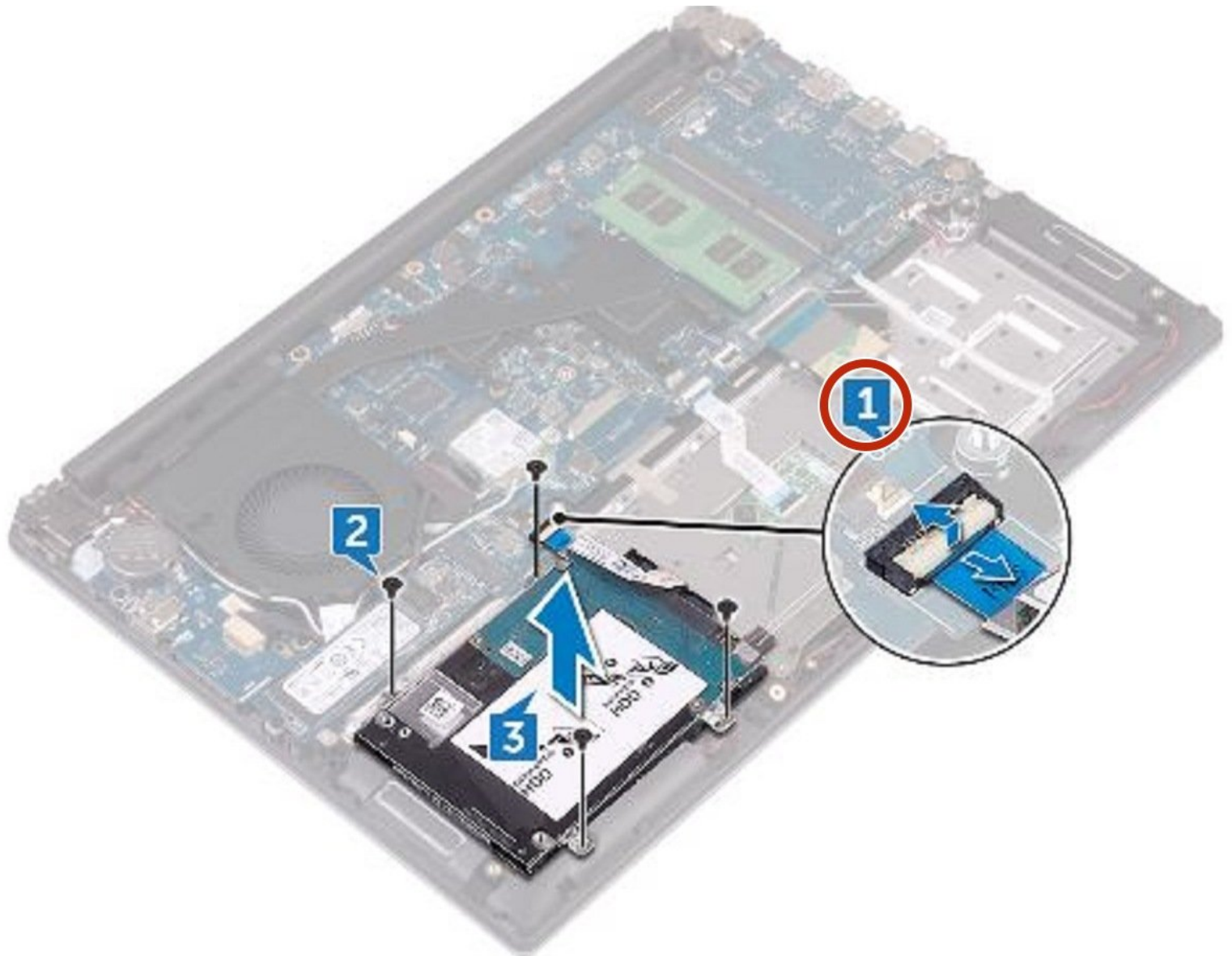




Dell Inspiron 14 7460 Hard Drive Replacement

Written By: Terrence15



INTRODUCTION

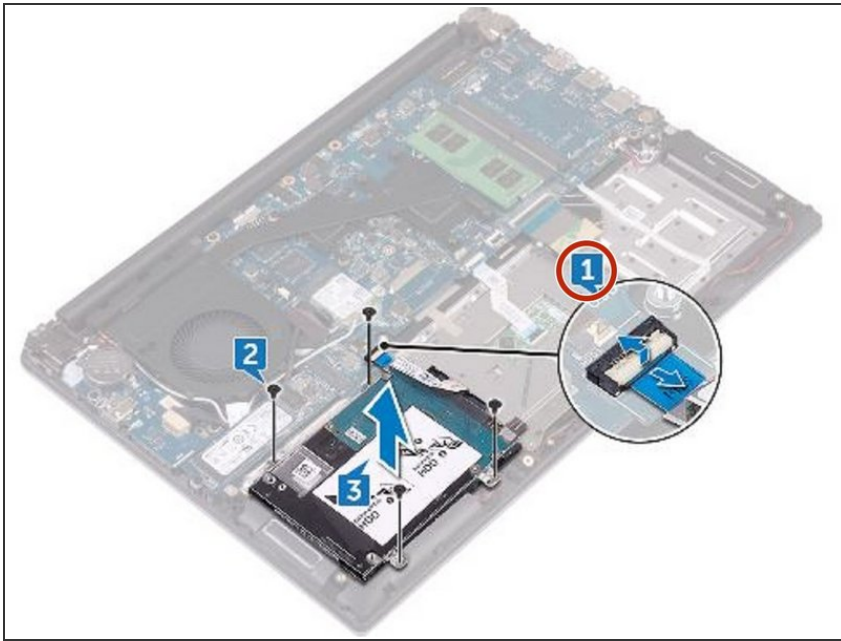
In this guide, we will show you how to remove and replace the Hard Drive.



TOOLS:

- [Essential Electronics Toolkit](#) (1)
-

Step 1 — Disconnecting the Hard-Drive Cable



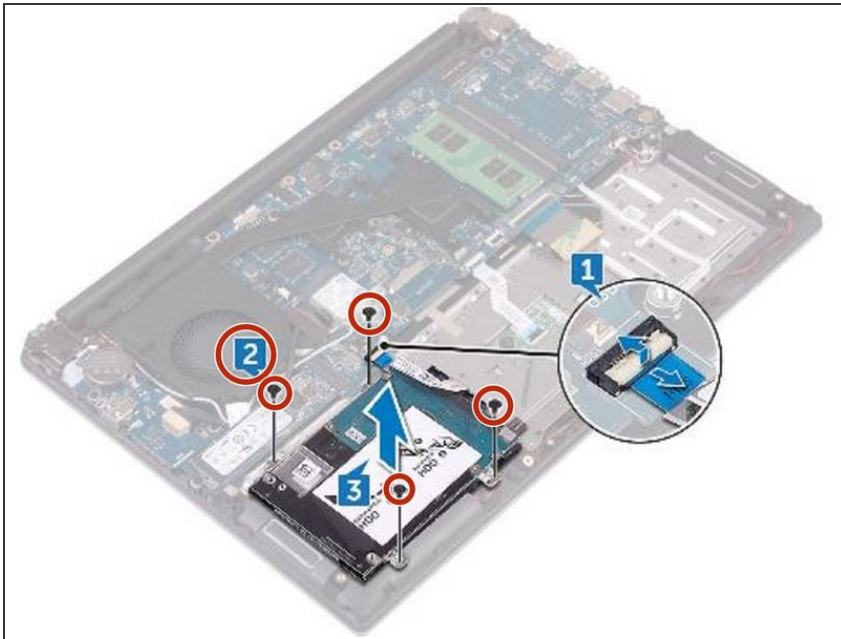
⚠ WARNING: Before working inside your computer, read the safety information that shipped with your computer and follow the steps in [Before Working Inside Your Computer](#). After working inside your computer, follow the instructions in [After Working Inside Your Computer](#).

⚠ CAUTION: Hard drives are fragile. Exercise care when handling the hard drive.

⚠ CAUTION: To avoid data loss, do not remove the hard drive while the computer is in sleep or on state.

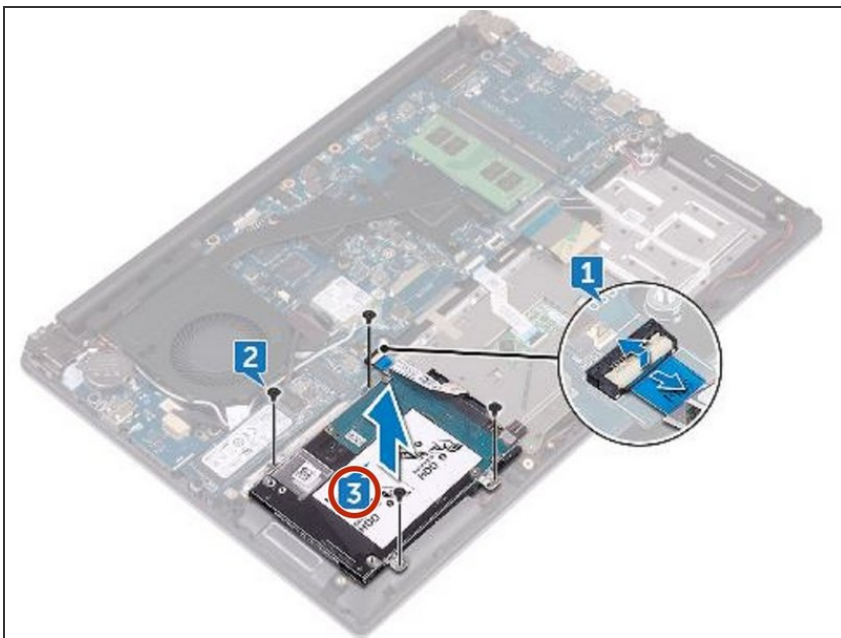
- Open the latch and disconnect the hard-drive cable from the system board.

Step 2 — Remove the Screws



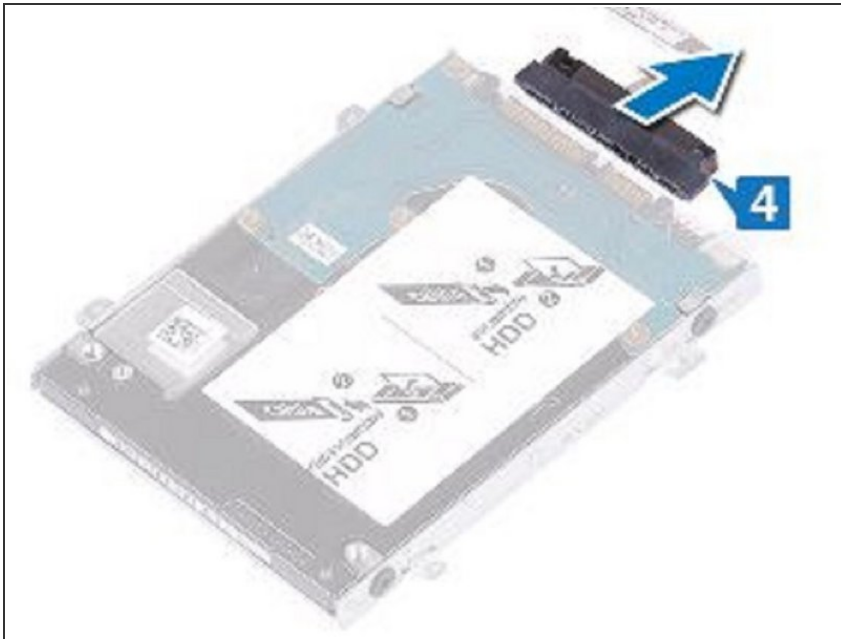
- Remove the four screws (M2x3) that secure the hard-drive assembly to the palm rest and keyboard assembly.

Step 3 — Lifting the Hard-Drive Assembly



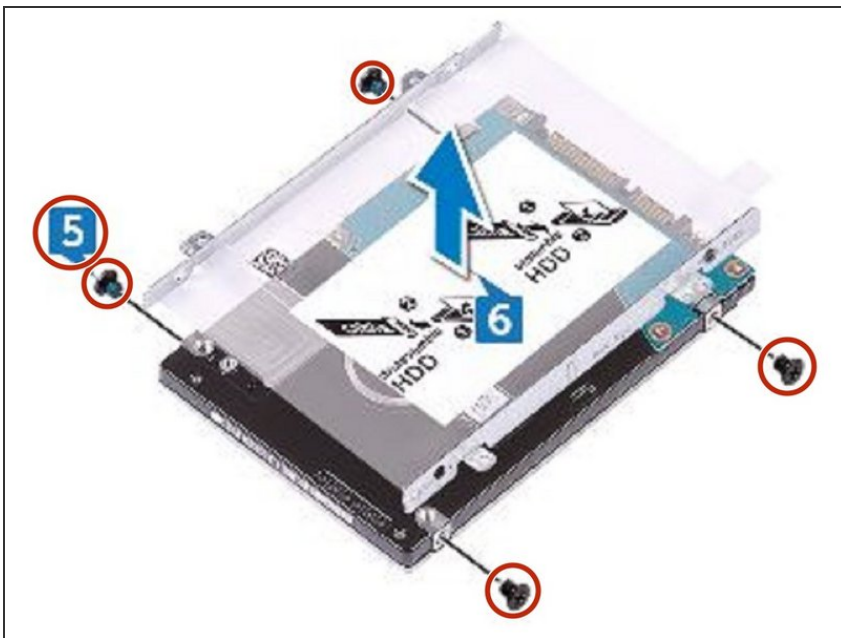
- Lift the hard-drive assembly off the palm rest and keyboard assembly.

Step 4 — Disconnecting the Interposer



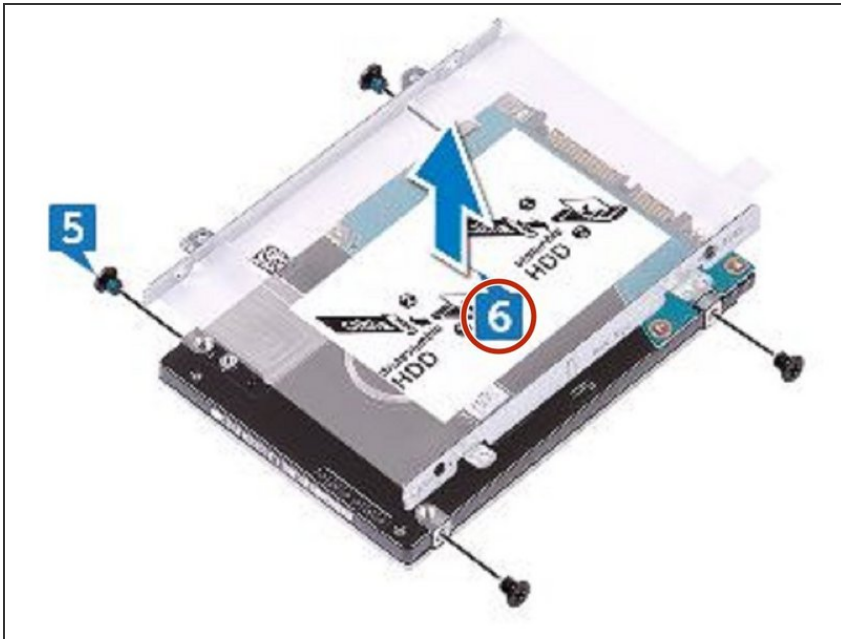
- Disconnect the interposer from the hard-drive assembly.

Step 5 — Remove the Screws



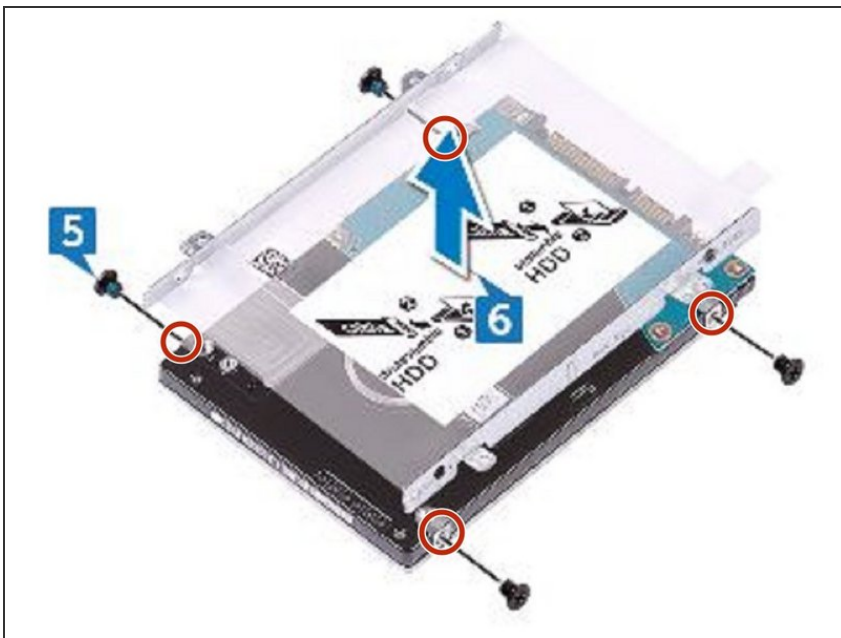
- Remove the four screws (M3x3) that secure the hard-drive bracket to the hard drive.

Step 6 — Lifting the Hard-Drive



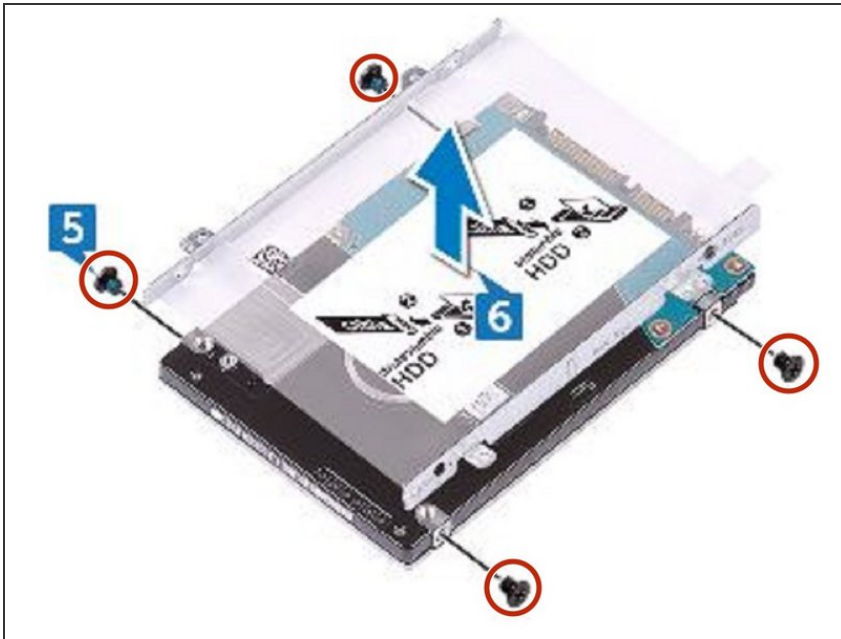
- Lift the hard-drive bracket off the hard drive.

Step 7 — Align the Screw Holes



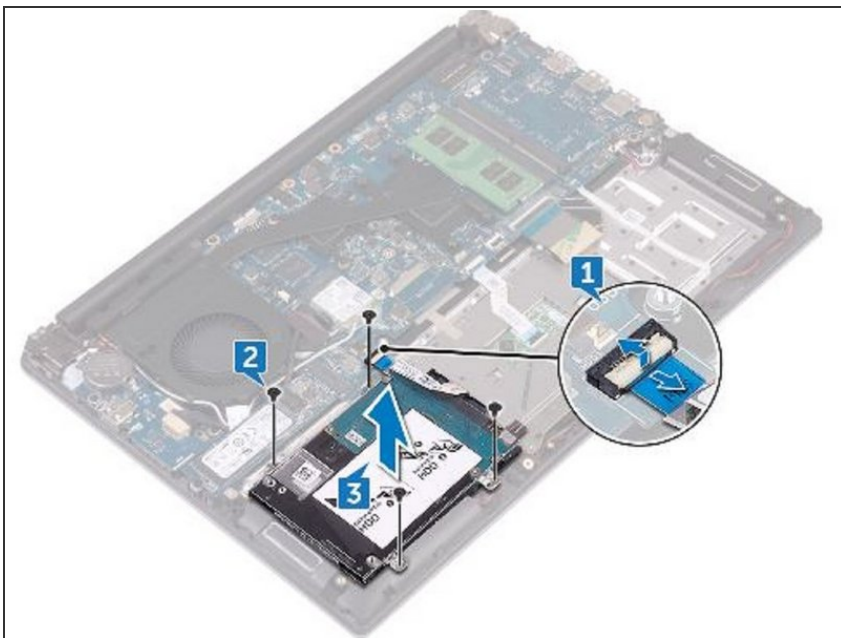
- Align the screw holes on the hard-drive bracket with the screw holes on the **NEW** hard drive.

Step 8 — Replace the Screws



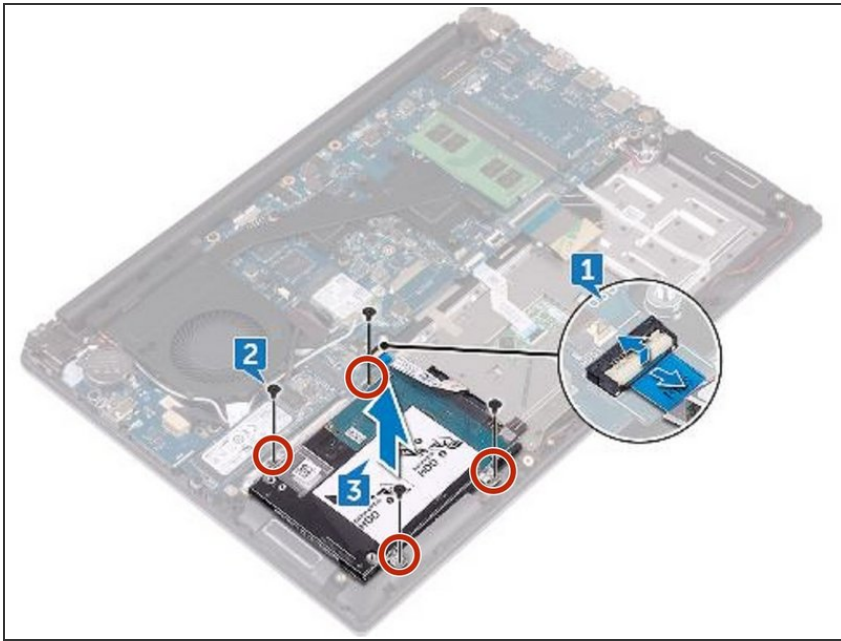
- Replace the four screws (M3x3) that secure the hard-drive bracket to the hard drive.

Step 9 — Connecting the Interposer



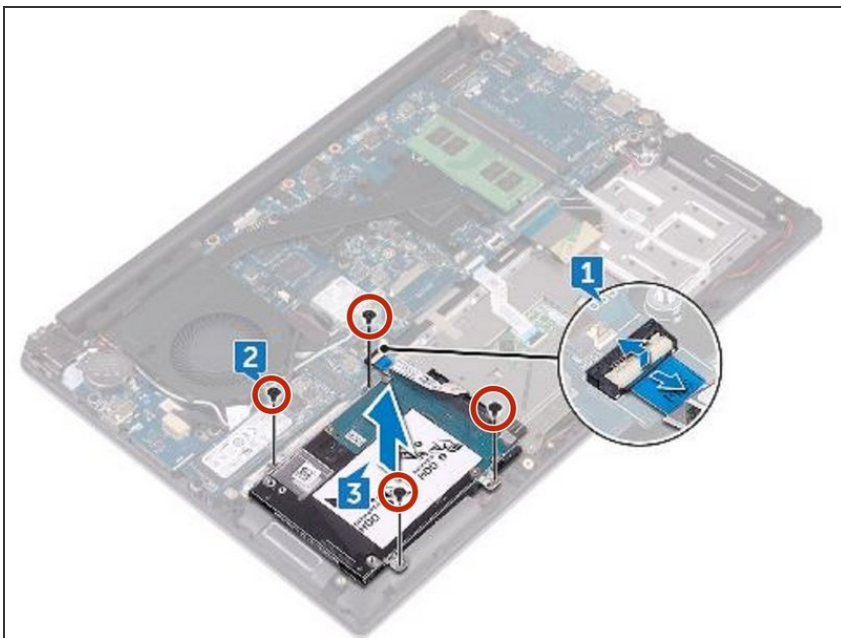
- Connect the interposer to the hard-drive assembly.

Step 10 — Align the Screw Holes



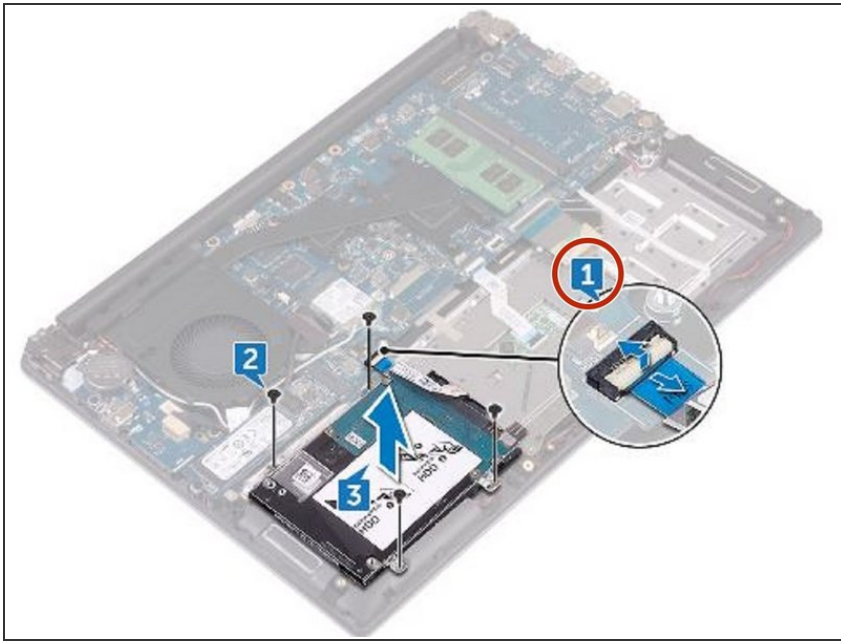
- Align the screw holes on the hard-drive assembly with the screw holes on the palm rest and keyboard assembly.

Step 11 — Replace the Screws



- Replace the four screws (M2x3) that secure the hard-drive assembly to the palm rest and keyboard assembly.

Step 12 — Connecting the Hard-Drive Cable



- Connect the hard-drive cable to the system board.

To reassemble your device, follow these instructions in reverse order.