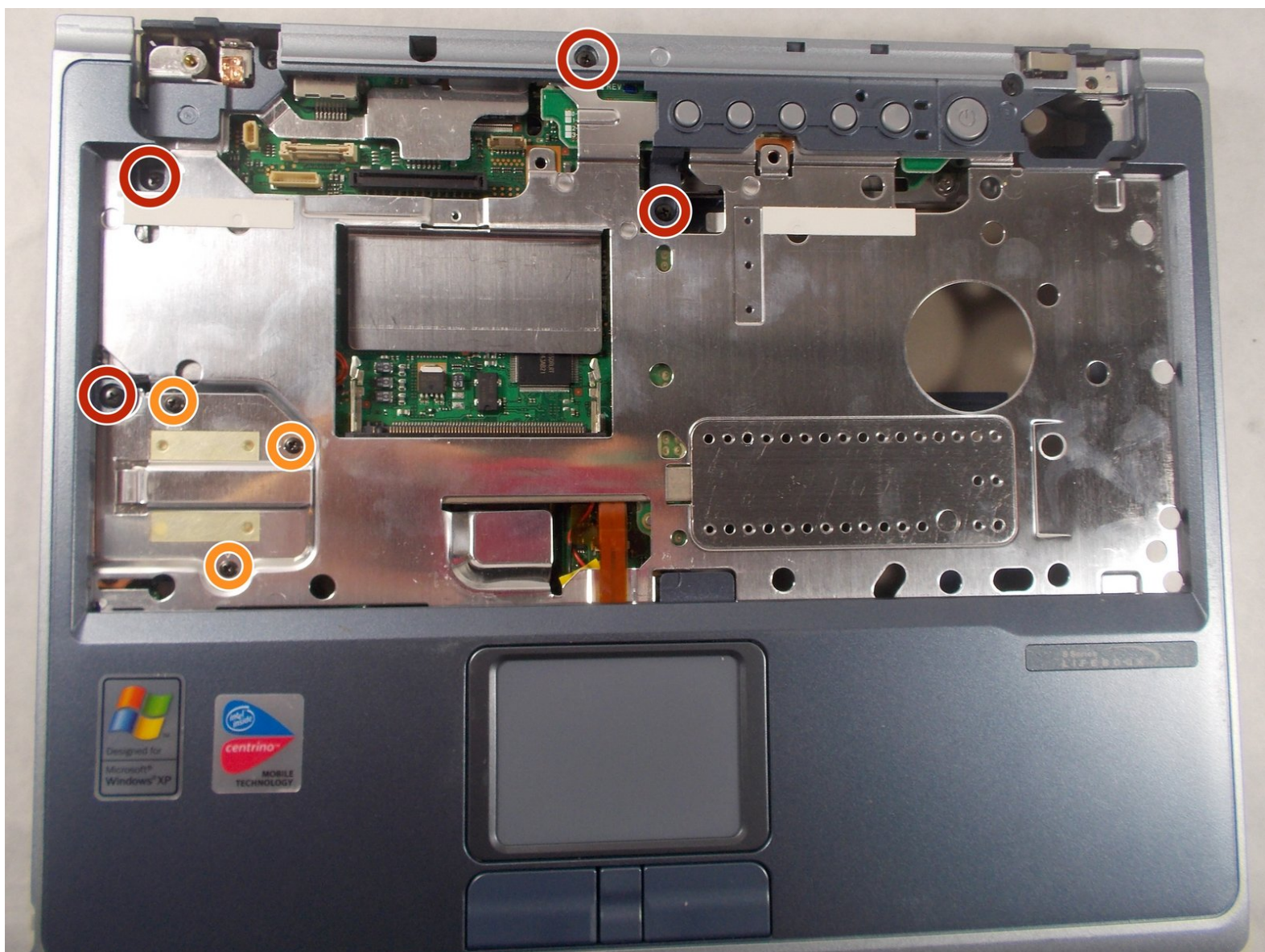




Fujitsu Lifebook S6120 Motherboard Replacement

Use this guide to replace the motherboard in your Fujitsu Lifebook S6120.

Written By: Jessi Gallant



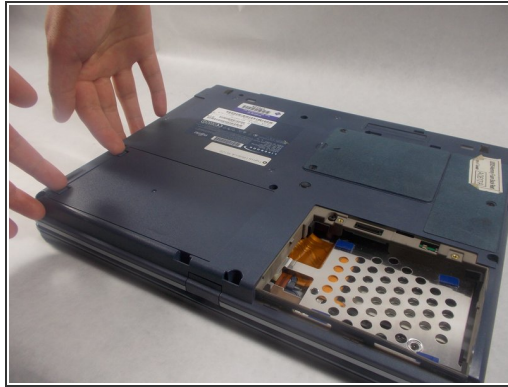
INTRODUCTION

If your computer is completely unresponsive and the motherboard needs to be replaced or repaired, this guide will show you how to remove the motherboard from the Fujitsu Lifebook S6120.

TOOLS:

- [Tweezers](#) (1)
 - [iFixit Opening Tools](#) (1)
 - [Phillips #0 Screwdriver](#) (1)
 - [Phillips #00 Screwdriver](#) (1)
 - [5mm Nut Driver](#) (1)
-

Step 1 — Battery



 To prevent injury, make sure the laptop is unplugged and turned off before removing the battery.

- Push the two tabs in towards the laptop.
- Lift the battery up and out from the frame of the laptop.

Step 2 — Hinge Cover



- Use a plastic opening tool to lift the back of the hinge cover on the left and right sides of the computer.

Step 3



- Lift the hinge cover.

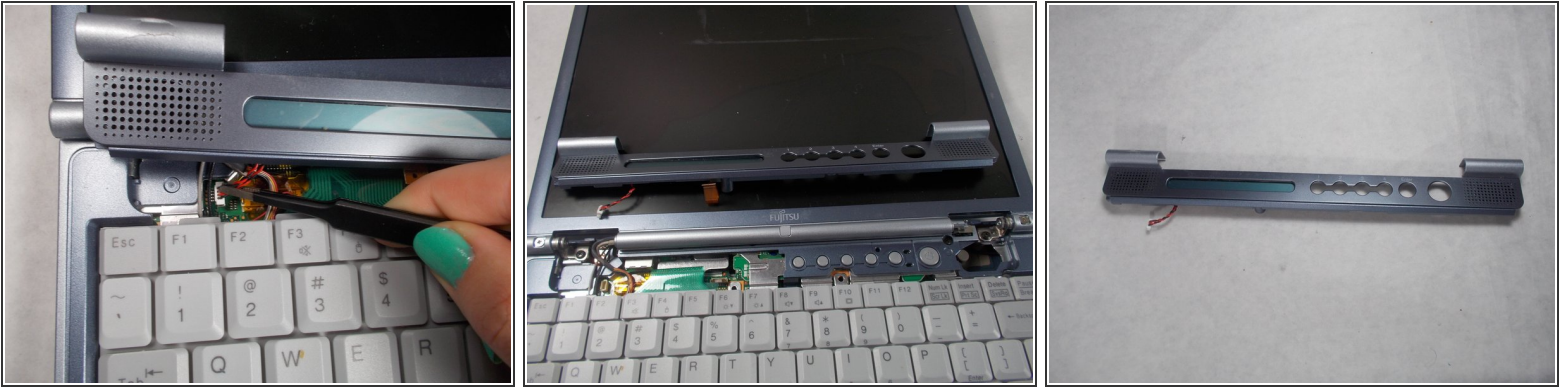
⚠ The hinge cover is connected to the motherboard by a ribbon cable. To prevent damage, lift hinge cover slowly.

Step 4



- Use the tweezers to disconnect the ribbon cable from the motherboard.

Step 5




- With the tweezers detach hinge cover cables from the motherboard.
- Remove hinge cover.

Step 6 — Keyboard



- Lift keyboard enough to show the ribbon cable.

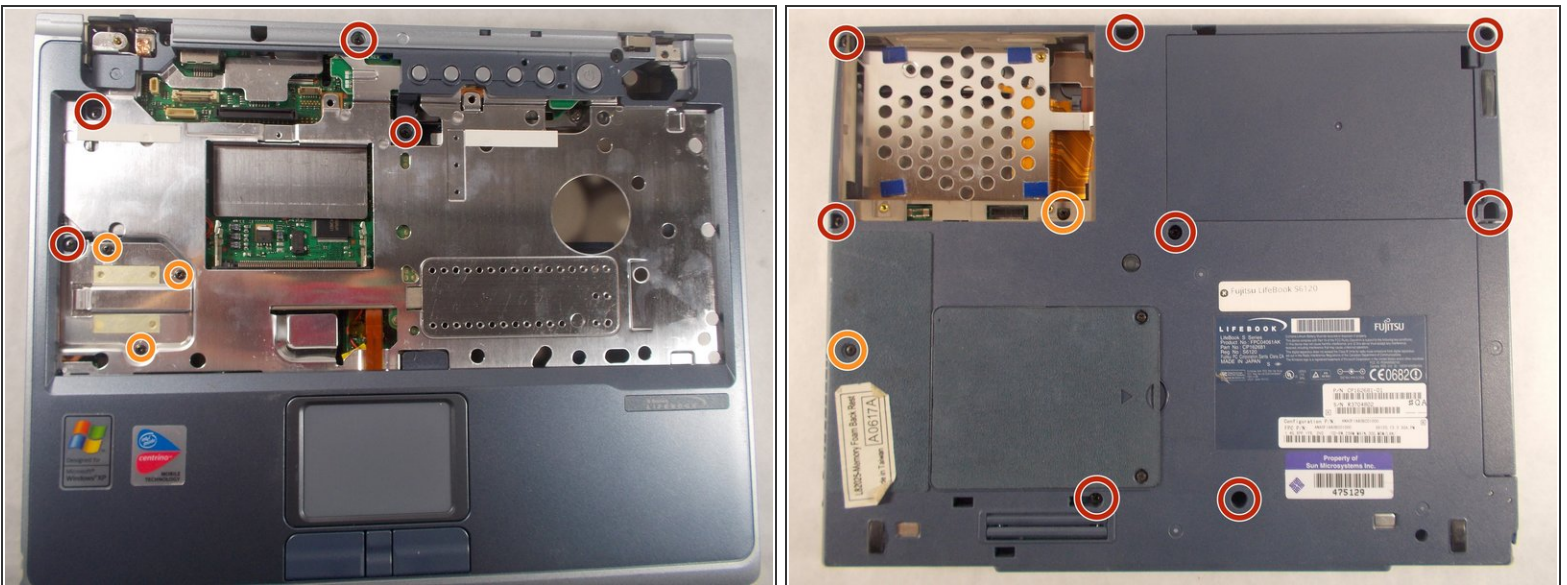
 The keyboard has a ribbon cable attached to the motherboard. Lift keyboard carefully to prevent damage.

Step 7



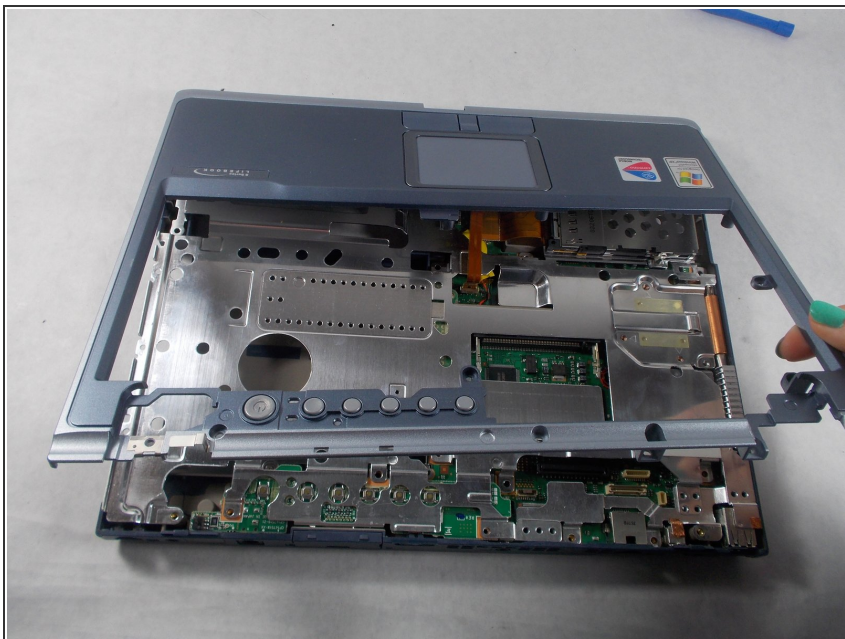
- Use a plastic opening tool to release the ribbon cable from the motherboard.

Step 8 — Motherboard



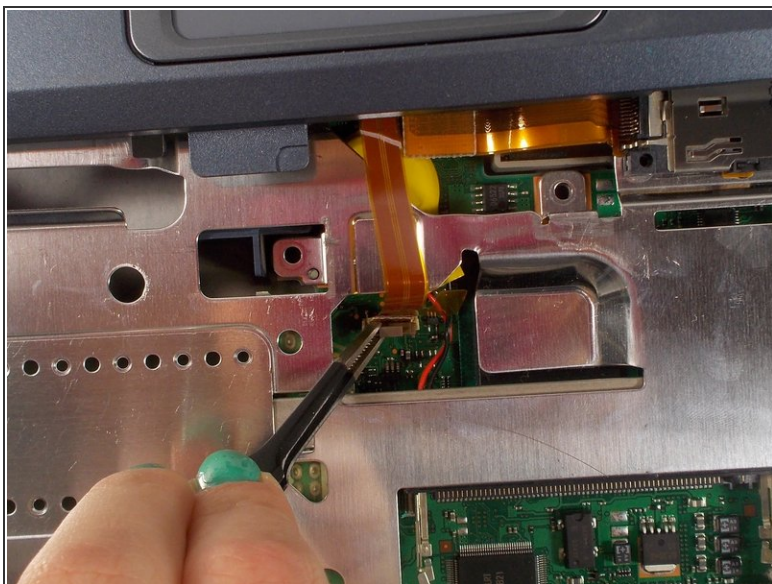
- Use a Philips head #0 to remove the 5mm screws.
- Use a Philips head #00 to remove the 4mm screws.

Step 9



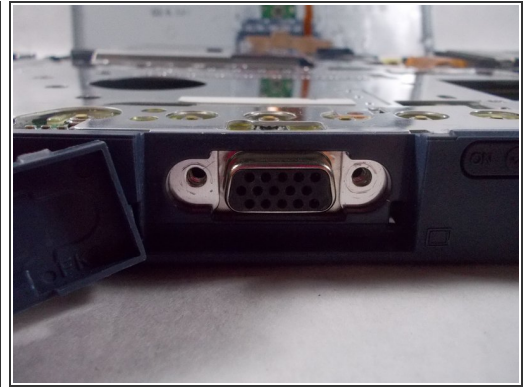
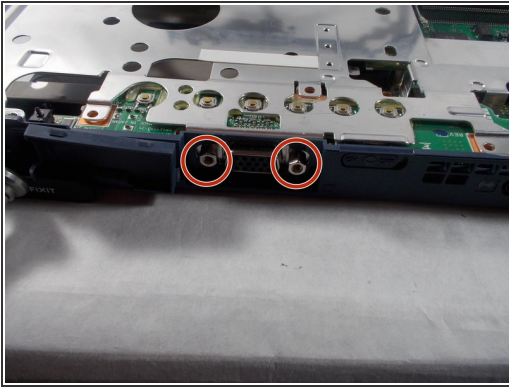
- Lift up the plastic frame from the base to expose the ribbon attached to the motherboard.

Step 10



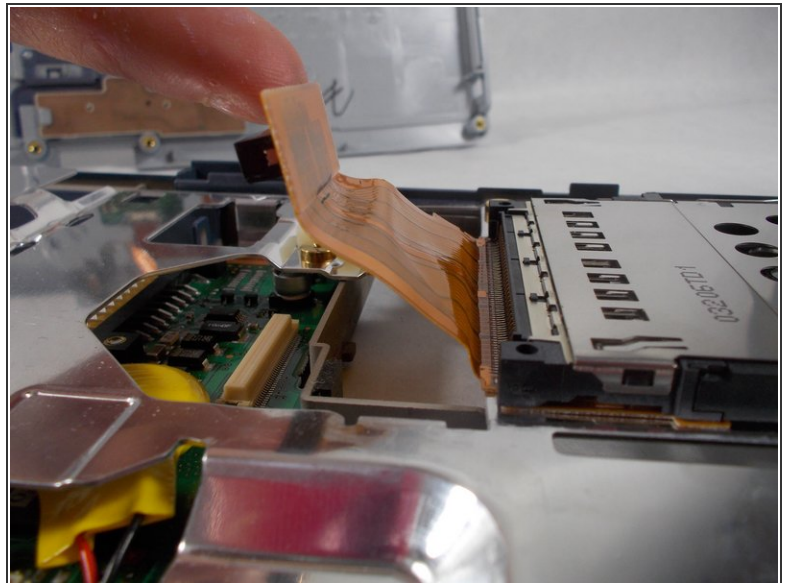
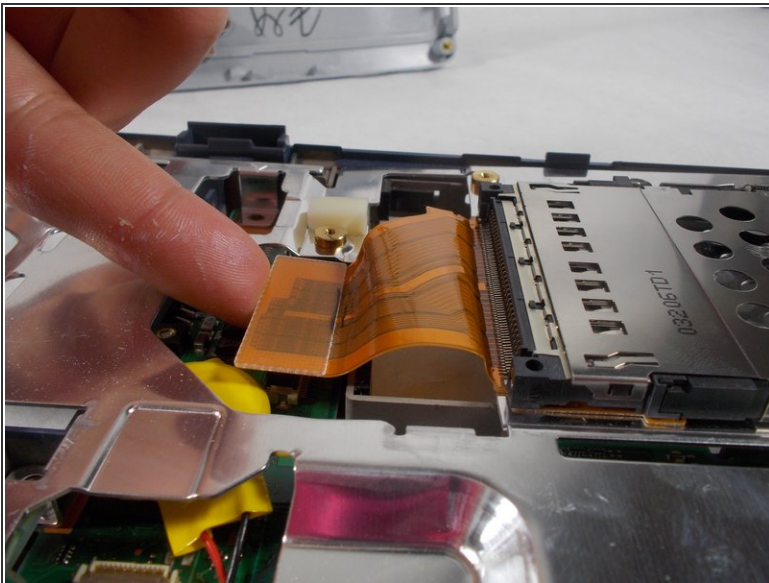
- Remove the ribbon from the motherboard with a pair of tweezers.

Step 11



- Use a 5mm nut driver to unscrew the nuts.

Step 12



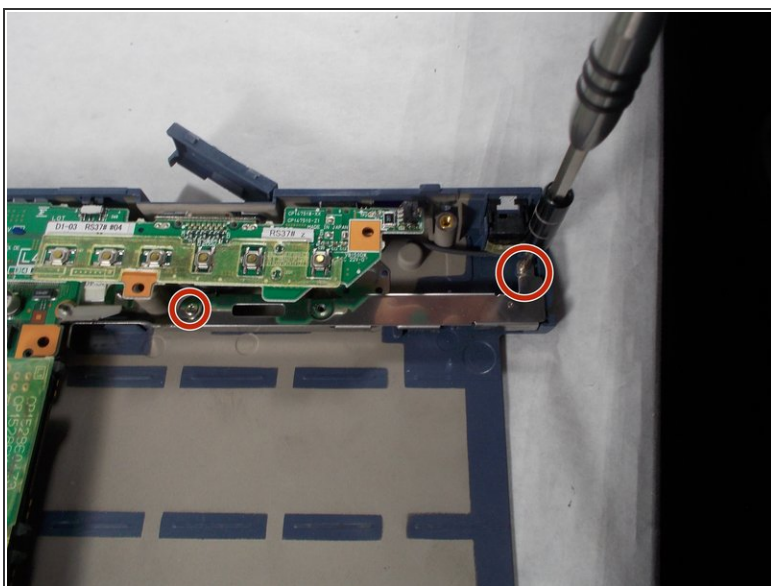
- Pull the ribbon tab up and off the motherboard.

Step 13



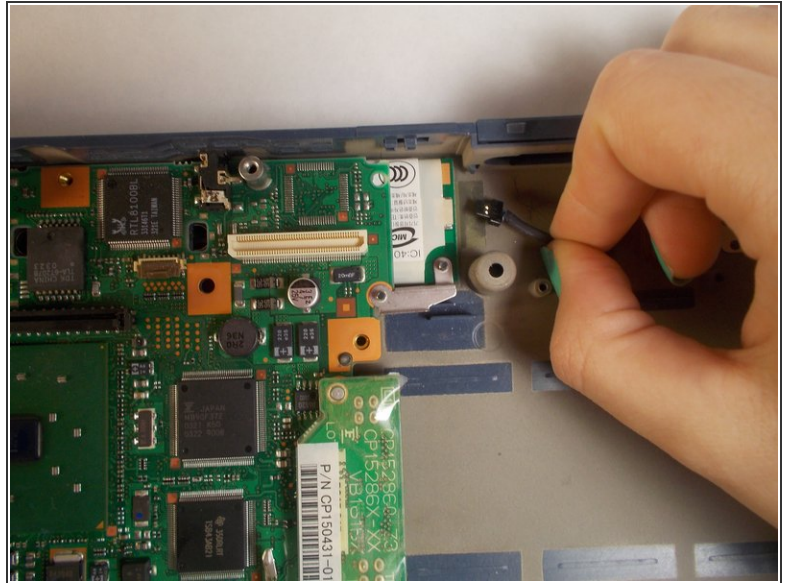
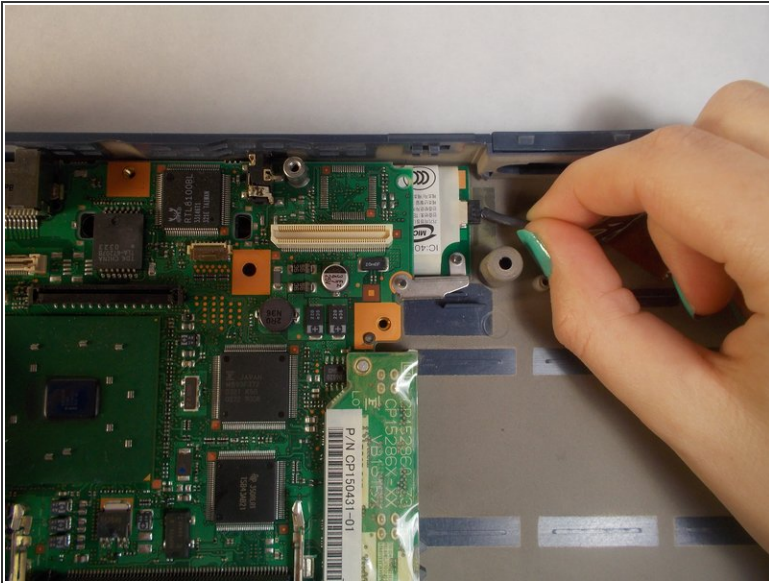
- Remove the metal plate covering the motherboard.

Step 14



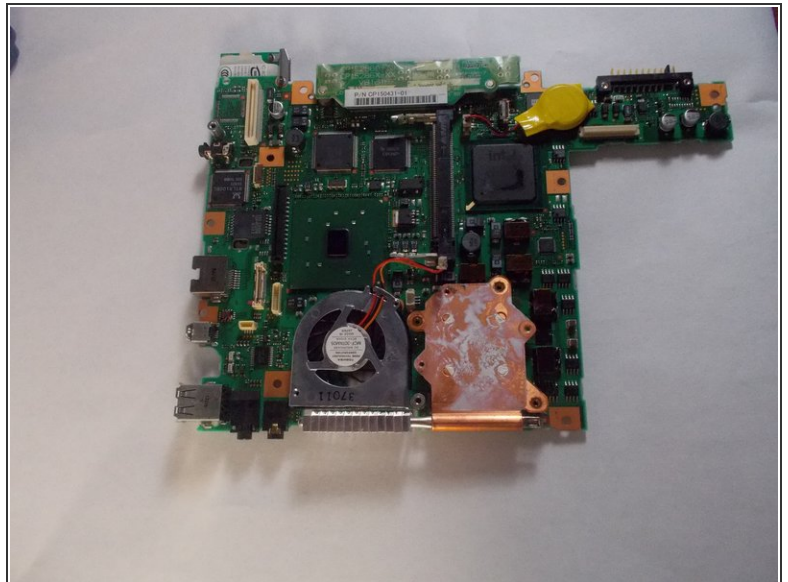
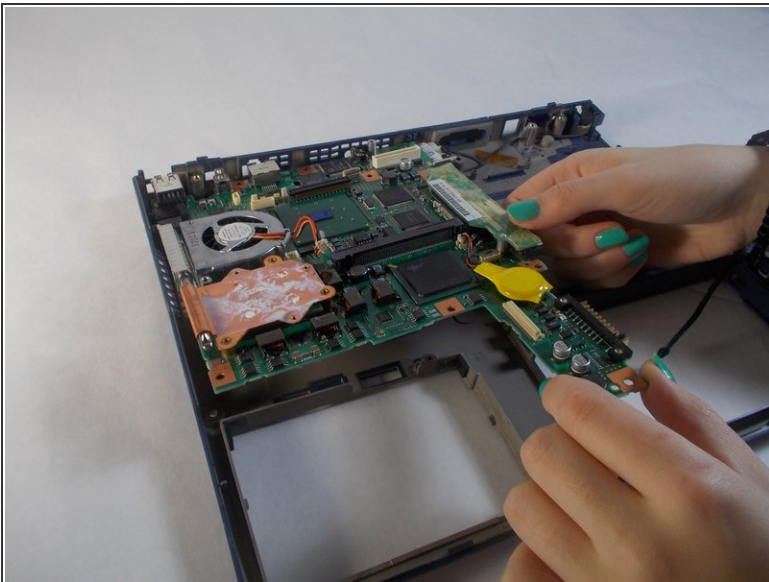
- Remove the 3.5mm screws with a Philips head #0.
- Remove the metal bracket and other pieces that rely on it for structure.

Step 15



- Pinch your fingers around the base of the connector and pull it out.

Step 16



- Lift the motherboard off the plastic base.

To reassemble your device, follow these instructions in reverse order.