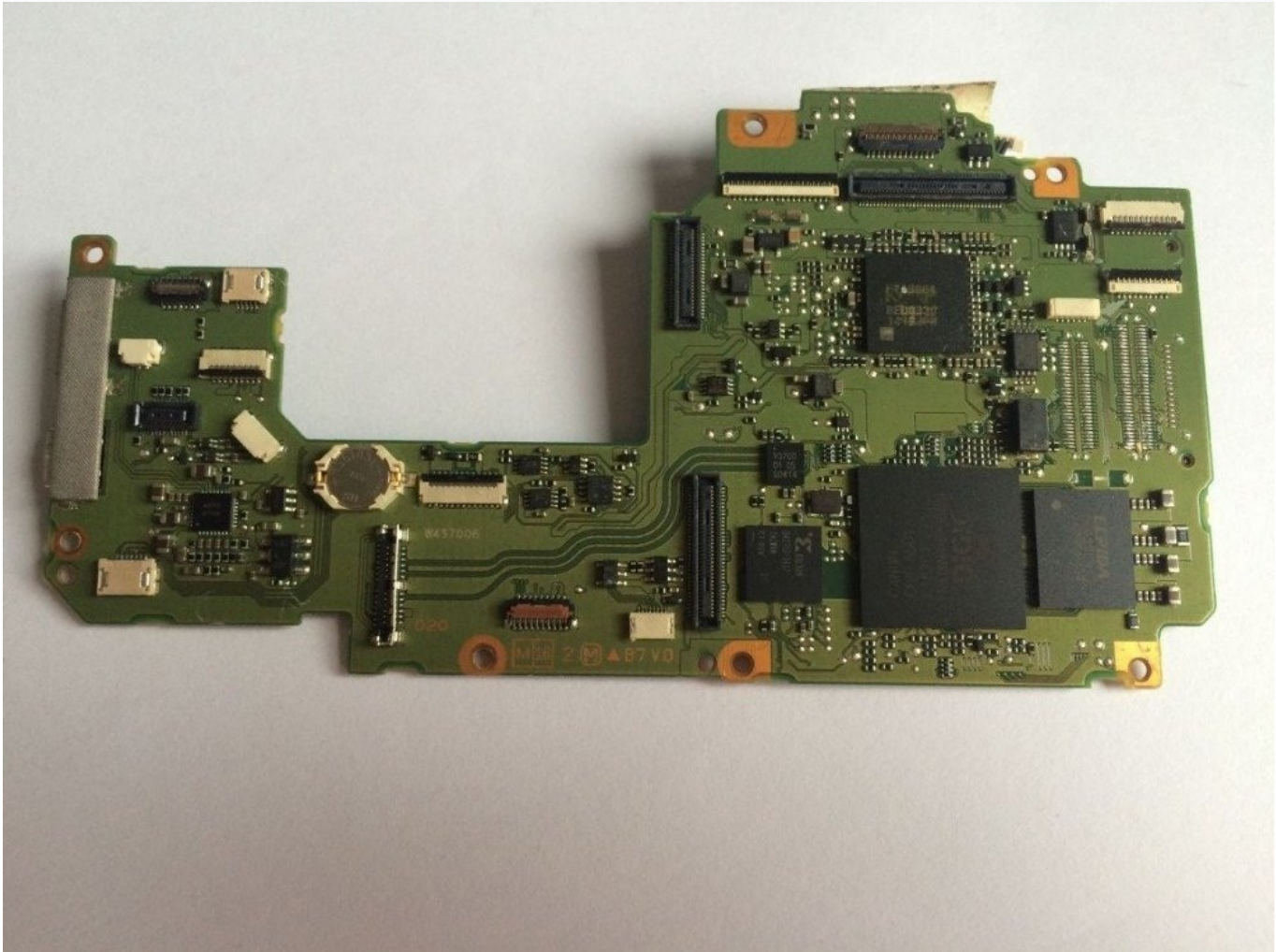




# Canon EOS 70D Camera Motherboard Replacement

The main motherboard controls all functions of...

Written By: Tyler Baker



# INTRODUCTION

The main motherboard controls all functions of the camera.

---

## TOOLS:

Spudger (1)

Phillips #000 Screwdriver (1)

Tweezers (1)

---

## Step 1 — Battery



- Hold the camera with the lens pointing down. Press the highlighted button with your finger to release the cover.
- Pull cover over to expose the battery.

## Step 2



- Press the white button with your finger to release the battery.
- Once released, the battery will eject out about two inches

## Step 3



- Pull battery out of the camera.

## Step 4 — LCD Touchscreen



- Pull Touchscreen out and rotate 90 degrees. Remove the four 3 mm Phillips #000 head screws that are now exposed at the hinge.
- Remove the two 5 mm Phillips #000 head screws that near the viewfinder.
- Use a spudger and pry apart the two plastic columns surrounding the screen hinge.
- ⓘ The screen will not be removed at this step.
- Rotate the screen forward 90 degrees and push it back into its housing against the camera.



## Step 5



- Use a spudger to peel rubber matting on left hand side to expose camera backplate mounting screws.
- Remove three 4 mm Phillip #000 head screws that mount the backplate to the left side of camera.

## Step 6



- Use [tweezers](#) to pry rubber matting on right hand side to expose backplate mounting screws.
- Remove four 4 mm Phillips #000 head screws that mount the backplate to the right side of camera.

## Step 7

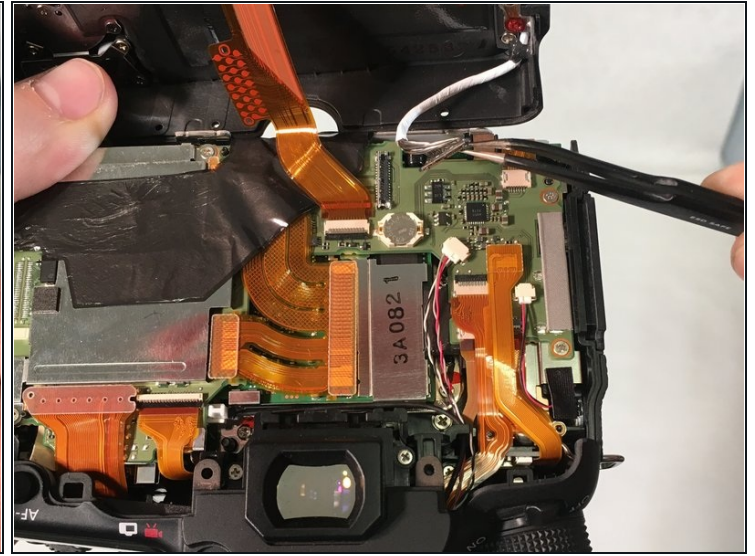
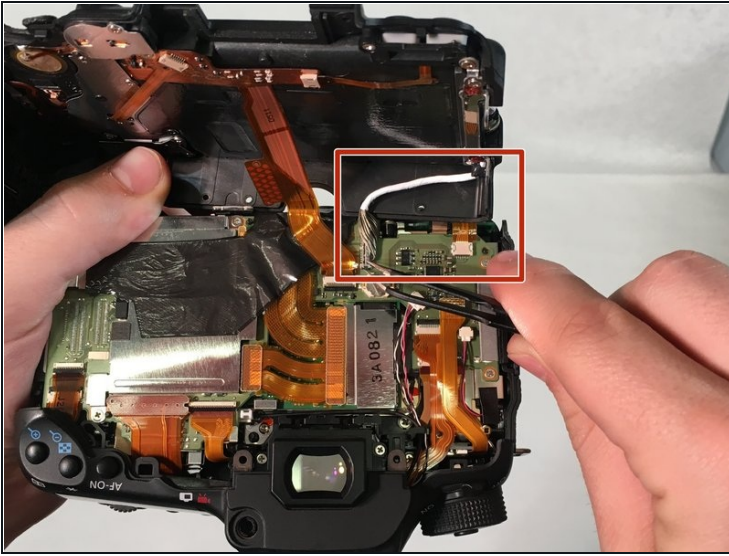


- Turn camera upside down. Remove five 5 mm Phillips #000 head screws securing the backplate to the bottom of the camera.
- Grab the backplate and gently pull away from camera.

⚠ The backplate will still be attached by the wires running to the LCD touchscreen.

ⓘ The screen will still be attached to the camera and won't be removed until step 10.

## Step 8



- Carefully pry open backplate from camera to expose LCD connector (white wire). LCD connector is attached with a metal bar to the motherboard.
- Use tweezers to gently pry metal bar connector from camera motherboard.

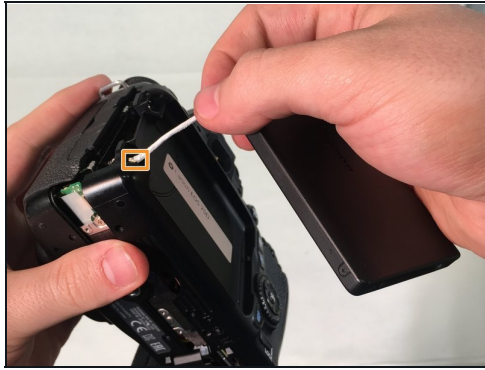
## Step 9



- Remove two 4 mm Phillips #000 head screws that mount the LCD touchscreen to the hinge on the camera.



## Step 10



- Grip the screen with your hand and gently pull white connecting wire through hole in backplate.
  - Once the connector reaches the hole, twist the connector and pull completely through hole.
- ① You must twist the connector in order to fit through hole.

## Step 11 — Camera Motherboard



- Use spudger to lift edge of black heat tape.
- Slowly peel back black heat tape.



## Step 12

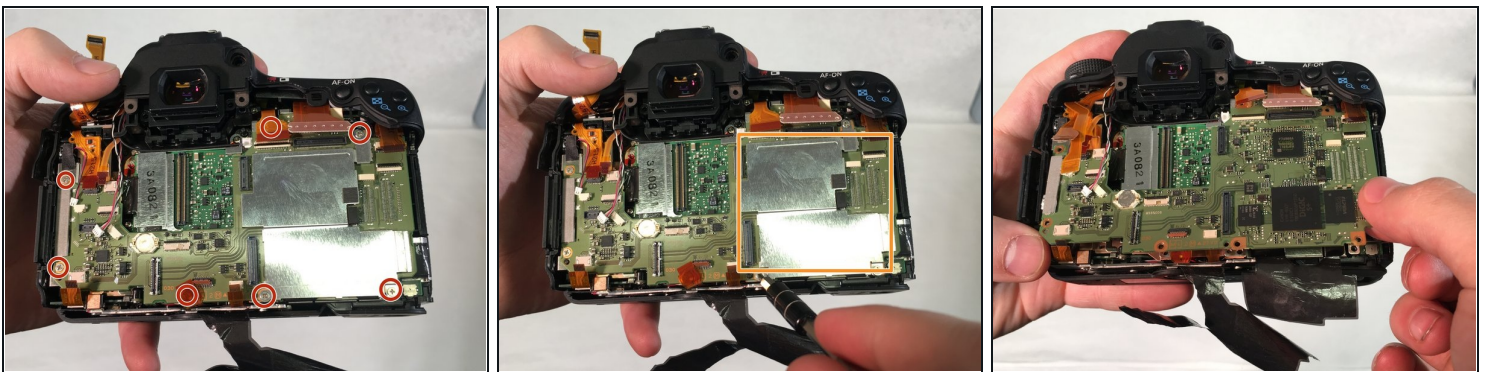


- Very carefully, use spudger to remove nine orangish ribbon cables.

- Using [tweezers](#) remove the two wire cables shown.

⚠ Slowly remove ribbon cables because they can tear very easily.

## Step 13



- Remove seven 5 mm Phillips #000 head screws around motherboard.

- Once the five screws are removed, remove the metal chip covered by hand.

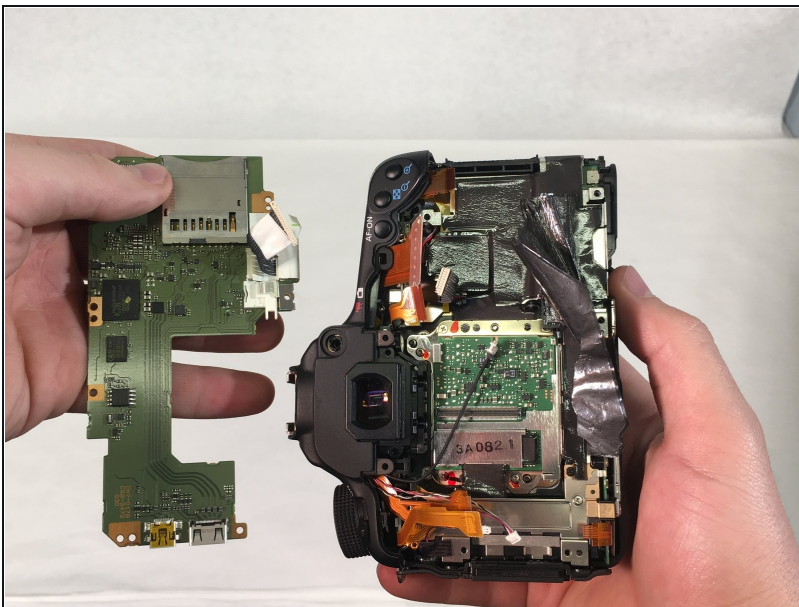
ⓘ This will leave the mother board exposed, attached by two cable wires underneath.

## Step 14



- Slowly lift motherboard to expose the two cable wires underneath.
- Using tweezers, unattach the two wire cables holding the motherboard in.

## Step 15



- Carefully remove motherboard.

---

To reassemble your device, follow these instructions in reverse order.