



Dell Precision M6600 Hard Drive Replacement

Written By: Kaley lindsay





TOOLS:

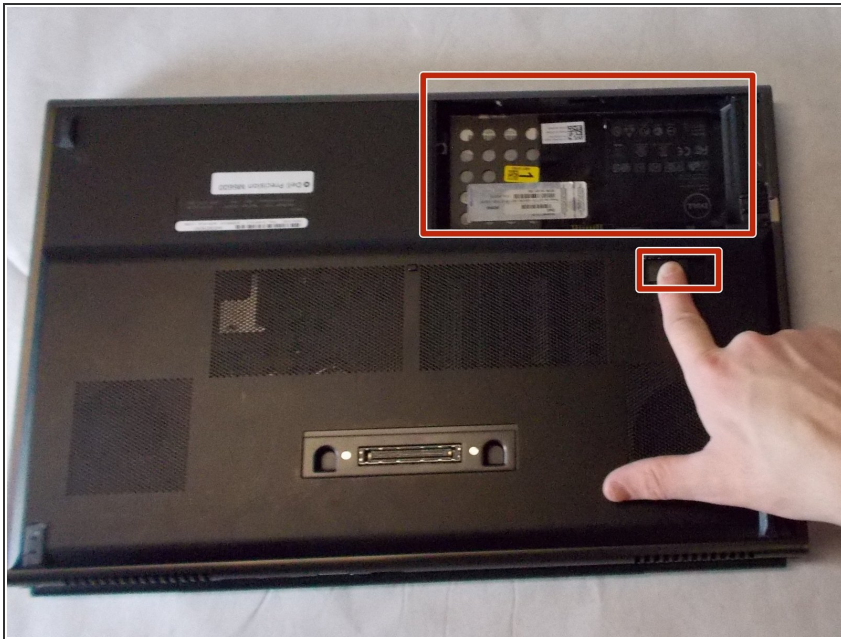
- [Fingers](#) (1)
- [Phillips #00 Screwdriver](#) (1)



PARTS:

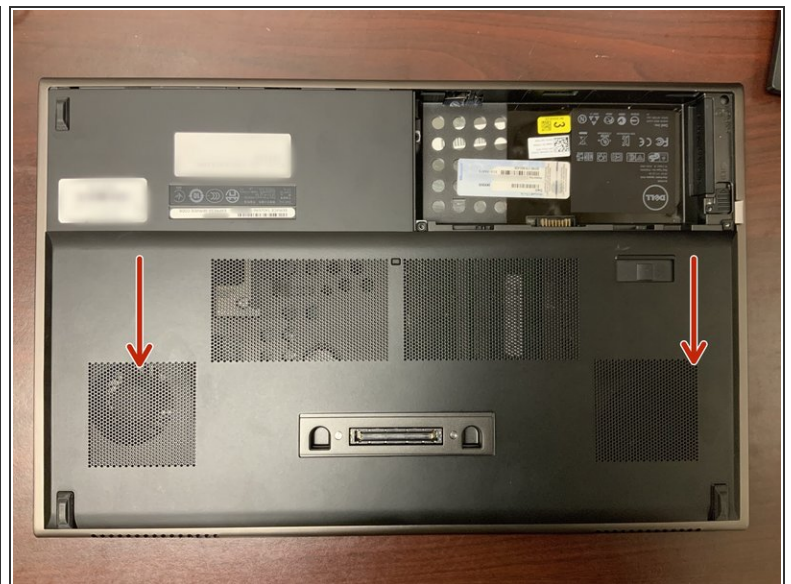
- [1 TB SSD](#) (1)
- [250 GB SSD](#) (1)
- [Crucial MX500 500 GB SSD](#) (1)
- [2 TB SSD](#) (1)

Step 1 — Battery



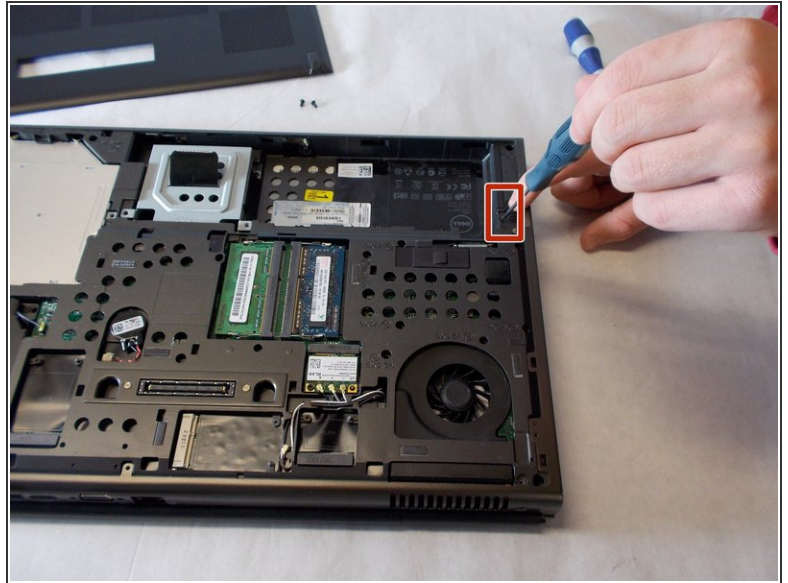
- Slide the lock key to unlock the battery. Then you can lift the battery from its holder.

Step 2 — Remove Bottom Cover



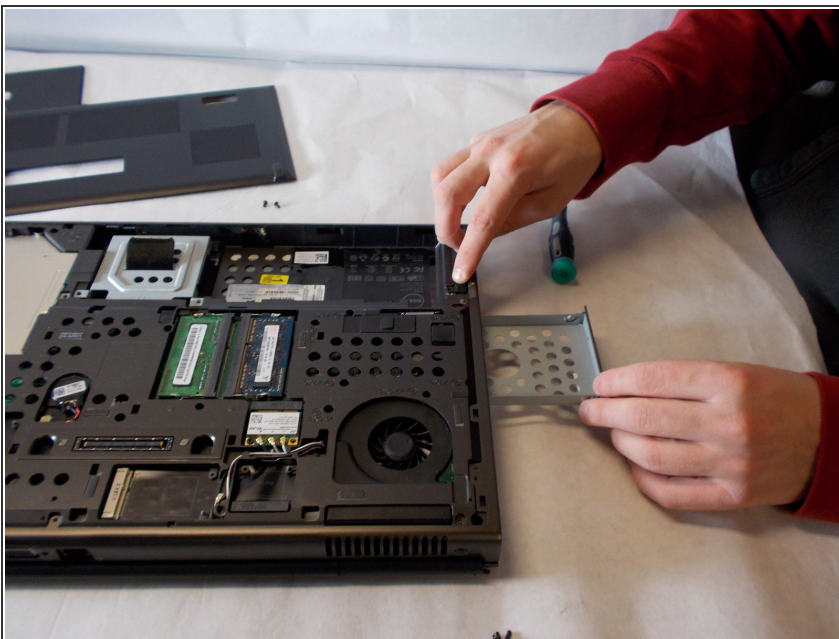
- Using Phillips screwdriver, remove 2 screws holding case.
- Slide case towards back of laptop then lift off to remove.

Step 3 — Remove the Hard Drive



- Using a Phillips Screwdriver, remove the 4 screws that hold the hard drive in place.
- Using a Phillips #00 take out the 1.5mm screw then slide to unlock the SSD holder.

Step 4



- When the lock was slid, a metal holder popped out and that is where the SSD is hidden.

To reassemble your device, follow these instructions in reverse order.