



Wireless LAN card Replacement

If your wireless LAN card is damaged or broken...

Written By: Armani Tayeh



INTRODUCTION

If your wireless LAN card is damaged or broken or you're having trouble connecting to WiFi with your laptop, replace Wireless LAN card using this guide.

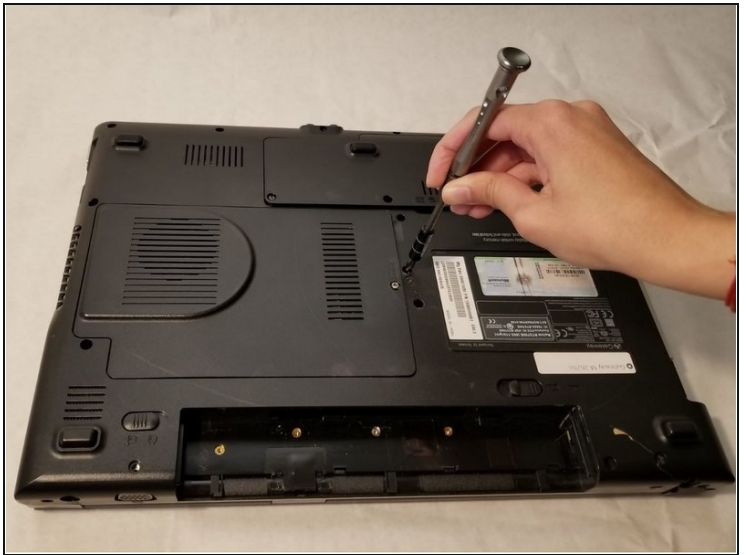
TOOLS:

Phillips #1 Screwdriver (1)

Tweezers (1)

iFixit Opening Tool (1)

Step 1 — Back Panel



- Using the Phillips #1 screwdriver, remove the four 6mm screws on the back of the laptop.

Step 2



- Insert the plastic prying tool and pry the back panel off starting at an edge and moving your way around it.

Step 3 — Wireless LAN card



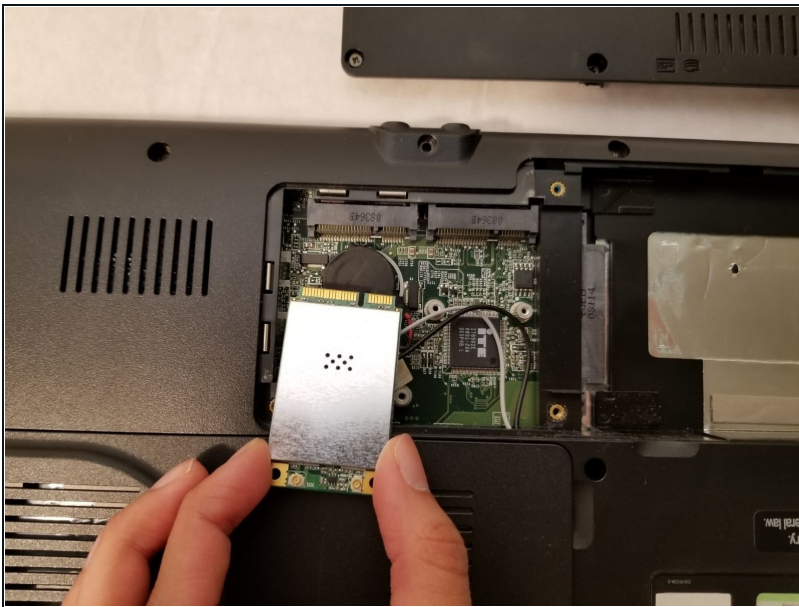
- Use the [tweezers](#) to remove the two connecting wires.

Step 4



- Using the Phillips #1 screwdriver, remove the two 2.5mm screws holding down the card.

Step 5



- Lift and pull the Wireless LAN card away from the computer.

To reassemble your device, follow these instructions in reverse order.