



Gateway P-6831FX WiFi Card Replacement

The WiFi Card is a component that adds wireless connectivity to a device. This guide will go over how to remove and replace the WiFi Card for the P-6831FX.

Written By: Chandler Jardin



INTRODUCTION

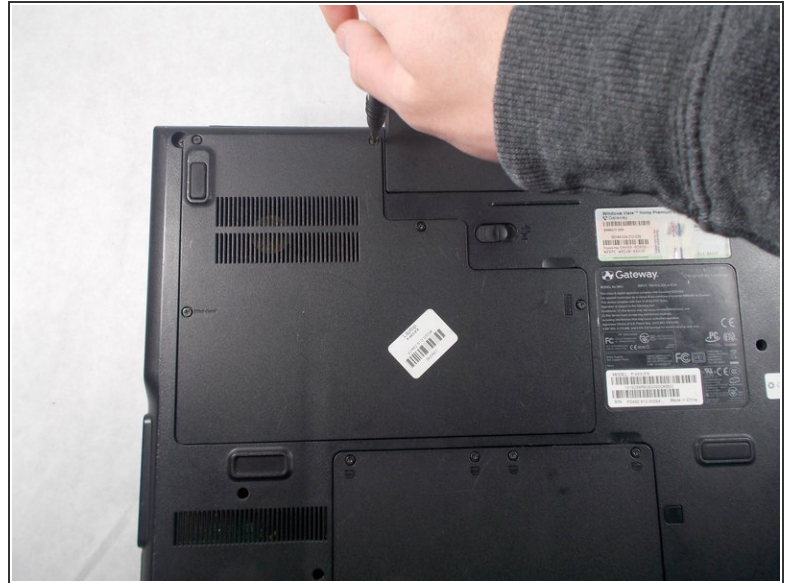
The WiFi Card is a component that adds wireless connectivity to your device. This guide will go over how to remove and replace the WiFi Card for the P-6831FX.



TOOLS:

- [Phillips #0 Screwdriver](#) (1)
-

Step 1 — WiFi Card



- Turn your laptop upside down and remove the five Philips #0 (5mm) screws for the cover of the WiFi Card.

⚠ Make sure to unplug your laptop charger, as removing the WiFi while the device is charging may damage the WiFi and or the charger.

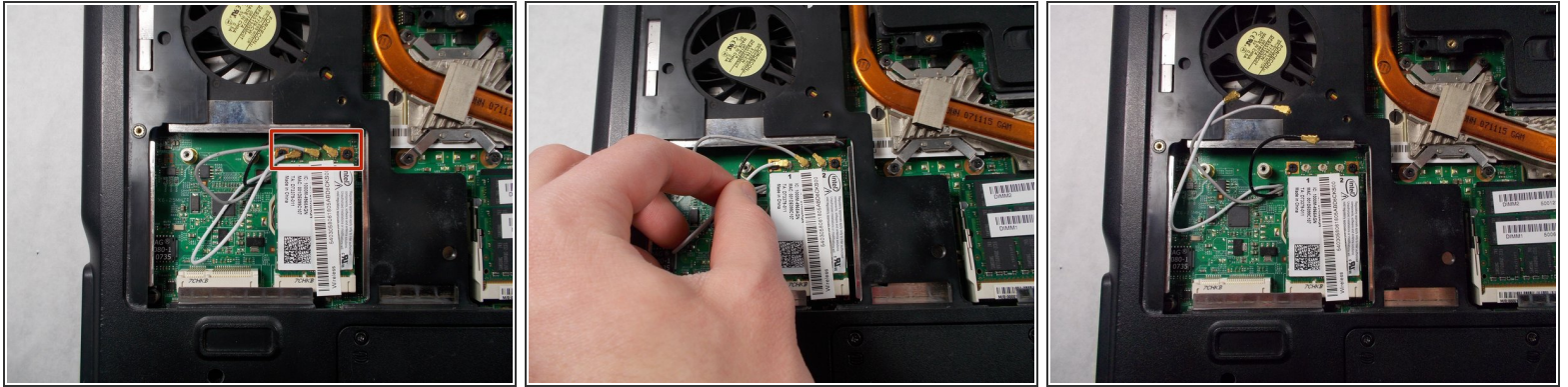
Step 2



- Gently pull the cover away from the device.

This document was generated on 2020-11-28 06:43:05 AM (MST).

Step 3



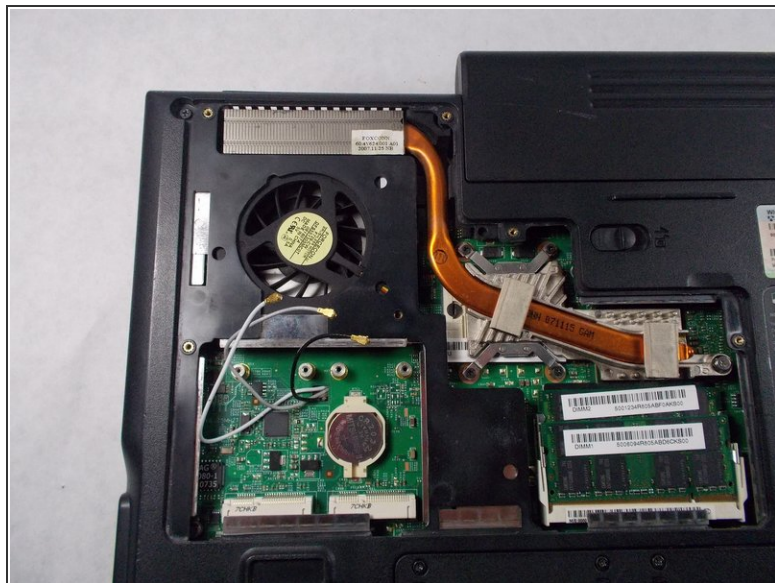
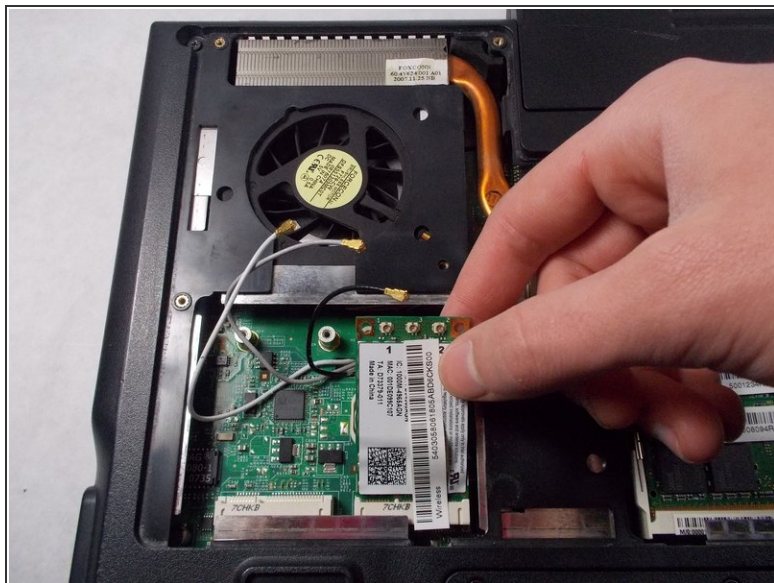
- Remove the three wires above the WiFi Card.
- ⓘ Take note of the color for each wire and it's corresponding location.

Step 4



- Remove the two Phillips #0 (2mm) screws above the WiFi card.
- ⓘ The WiFi Card will lift up once the screws are removed.

Step 5



- With the WiFi Card lifted up, gently pull the WiFi Card out of the socket and remove it from the device.

To reassemble your device, follow these instructions in reverse order.