



HP Pavilion N3350 Screen Assembly Replacement

Use this guide to replace the screen of your device.

Written By: Emily Hatstat



INTRODUCTION

If the screen of your laptop is black when powered on, or cracked, it should be replaced. With the purchase of a new screen, follow these steps to replace it completely.

TOOLS:

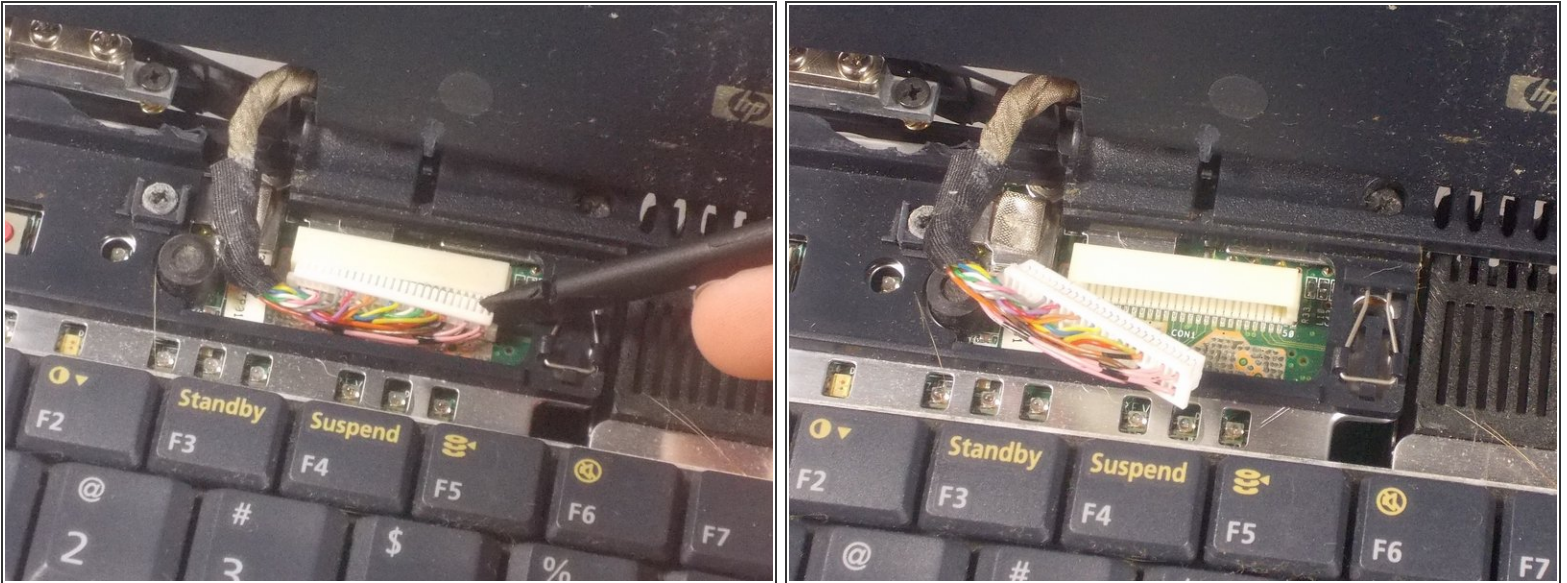
- [Spudger](#) (1)
 - [Metal Spudger](#) (1)
 - [Phillips #1 Screwdriver](#) (1)
 - [iFixit Opening Tools](#) (1)
-

Step 1 — Screen Assembly



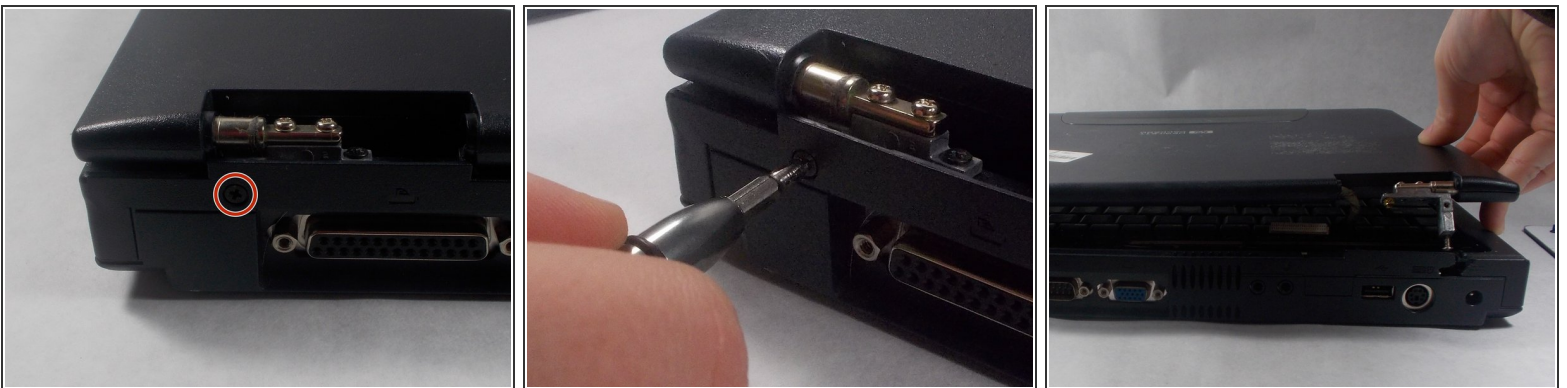
- Open your laptop. Beneath the screen, there is a large plastic piece that contains slots for a speaker, the power button, and numerous indicator lights.
- To remove this, pry it open with a spudger tool gently. It should pop out of place.

Step 2



- Gently use a spudger tool or your fingers to disconnect the LCD cable from the screen.
- ⓘ This is one of three connectors that needs to be undone to disconnect the screen from the laptop.

Step 3



- Remove the 1 cm screw with a Phillips #1 screwdriver to allow the screen and top of the laptop to be separated from the keyboard and bottom.
- Lift the entire top away from the bottom, and set bottom half of the laptop aside.

Step 4



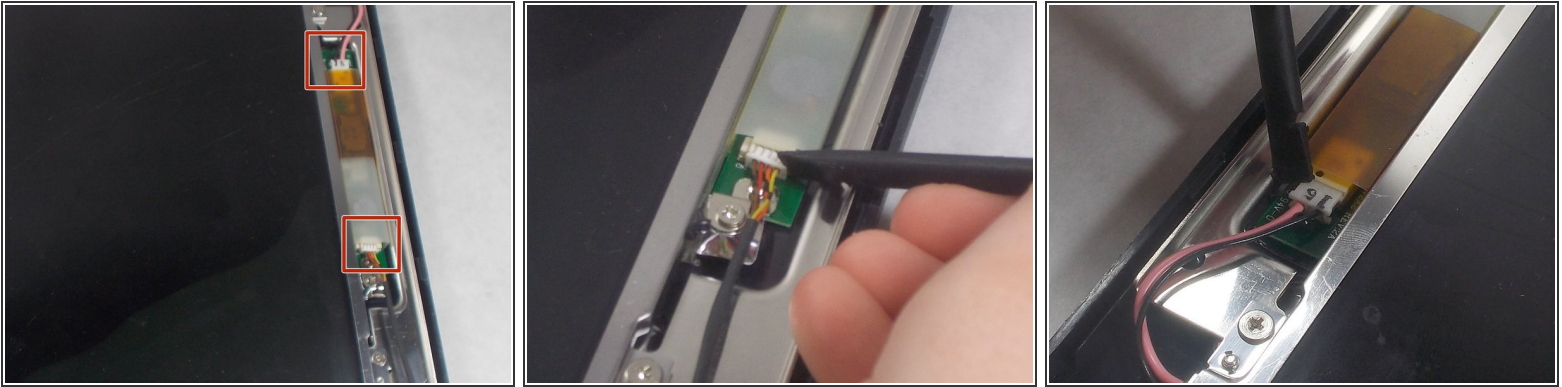
- Remove the 6 rubber screw caps with a metal spudger.
- After removing the 6 rubber screw caps, use a Phillips #1 screwdriver to unscrew the six 6mm screws.

Step 5



- To separate the plastic cover, use a plastic opening tool to undo each plastic connecting clip between the two.
- ⓘ You can find the plastic connecting clips by sliding the plastic opening tool along the seam between the two plastic covers.
- Remove the top plastic cover once all connections have been released.

Step 6



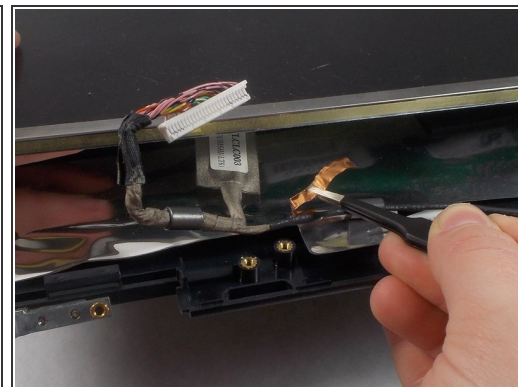
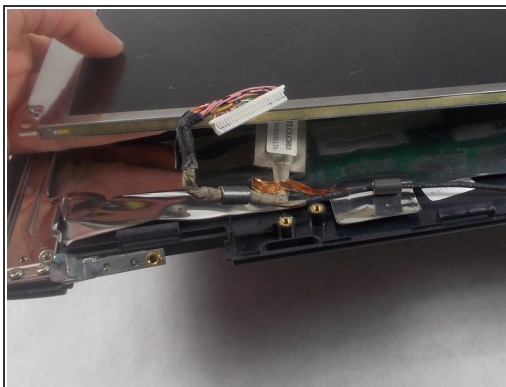
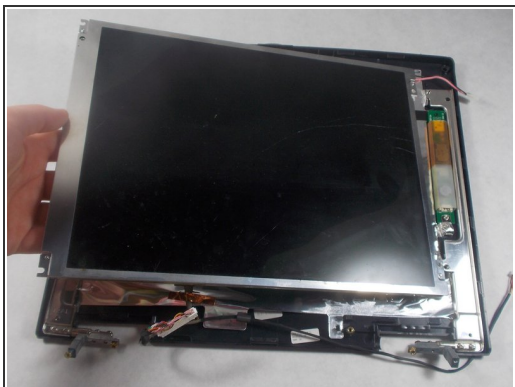
- Disconnect the connectors using a plastic opening tool.
- ⓘ Once these two connectors are released, the screen should be electronically freed from the rest of the laptop.

Step 7



- At each corner, there is a 1 centimeter silver screw connecting the screen frame to the laptop. Remove these using a Phillips #1 Screwdriver.

Step 8



- There should be thin piece of copper 'tape' holding the LCD cable down. Remove this gently with tweezers.
- Remove the screen from the device.

To reassemble your device, follow these instructions in reverse order.