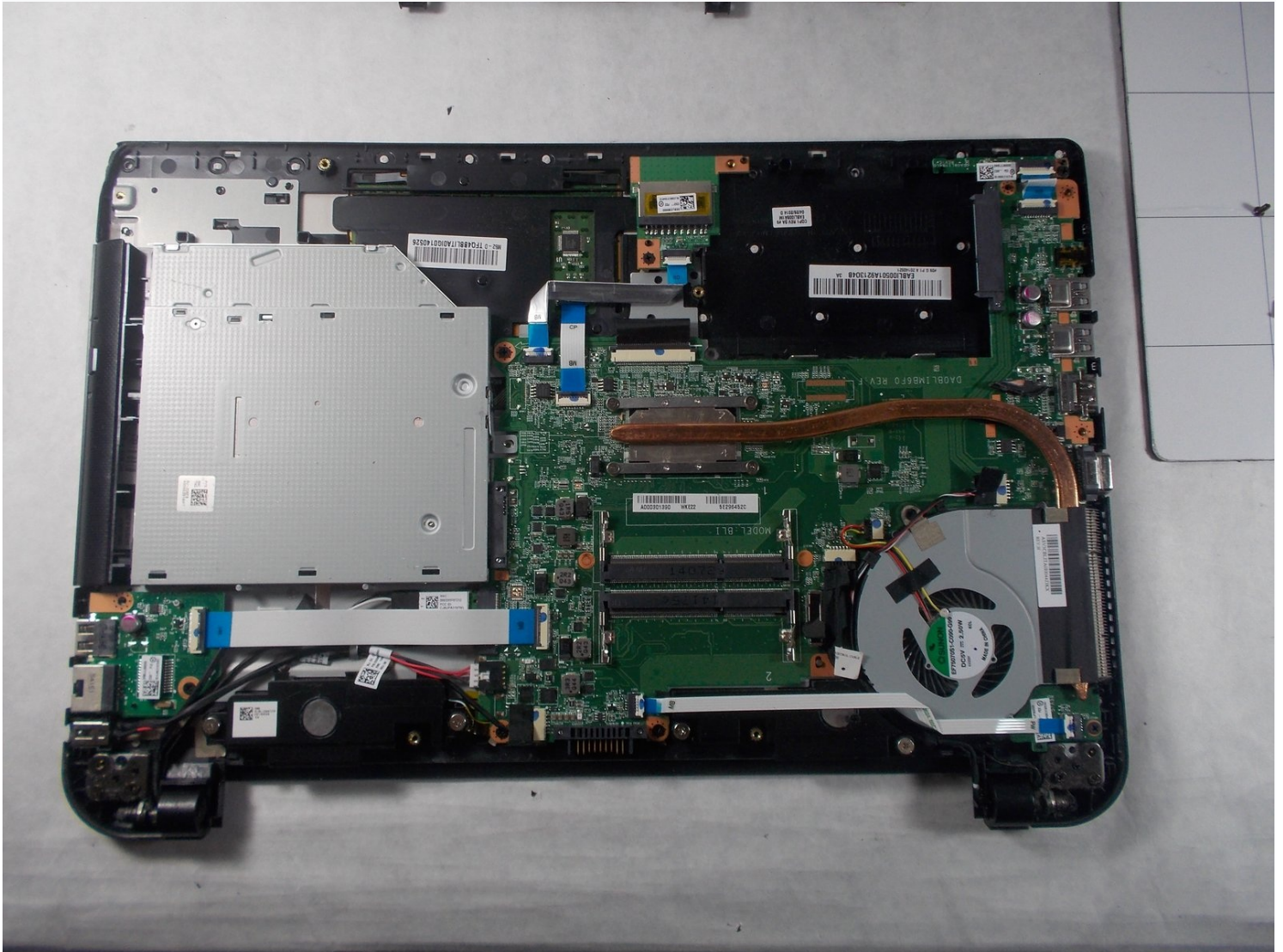




Toshiba Satellite L55t-B5271 CD Drive Replacement

This guide will help you replace a faulty CD...

Written By: Garrett Garofalo



INTRODUCTION

This guide will help you replace a faulty CD drive in your laptop. It will instruct you to remove the back cover of the laptop in order to access the CD drive. You must then unscrew the drive and replace it with the new drive

TOOLS:

[iFixit Opening Tool](#) (1)
[Heavy-Duty Spudger](#) (1)
[Anti-Static Wrist Strap](#) (1)
[Phillips #00 Screwdriver](#) (1)

PARTS:

[Toshiba Satellite L55t-B5271 CD Drive](#)
(1)

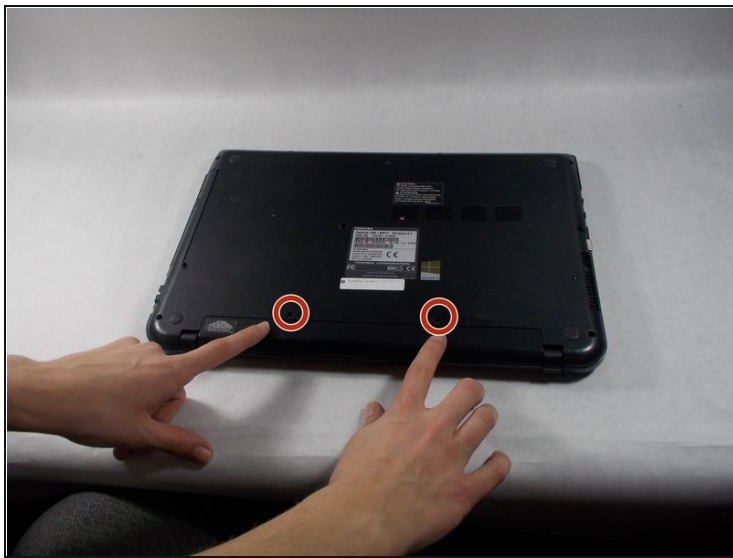
Step 1 — Battery



 Make sure you turn the laptop off first.

- Close the laptop lid and flip it over so that Toshiba logo is facing down.

Step 2



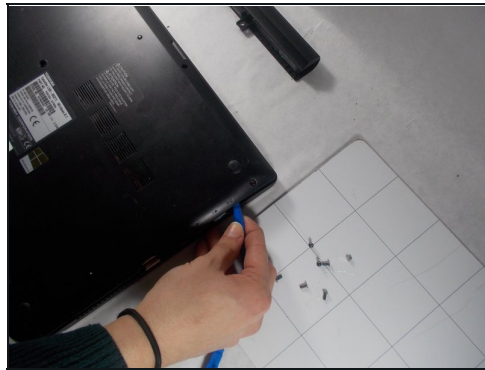
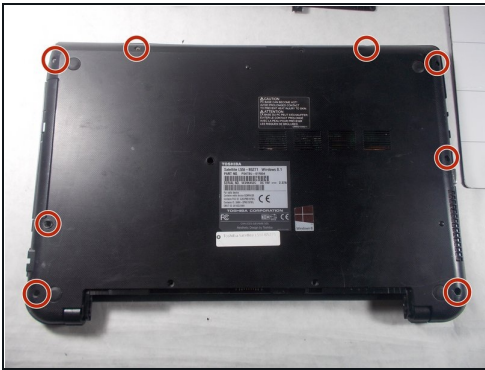
- Remove the two 6.5 mm Phillips head screws indicated using a Phillips #00 screw driver.

Step 3



- Once the screws are removed, slide the battery pack out of the computer.

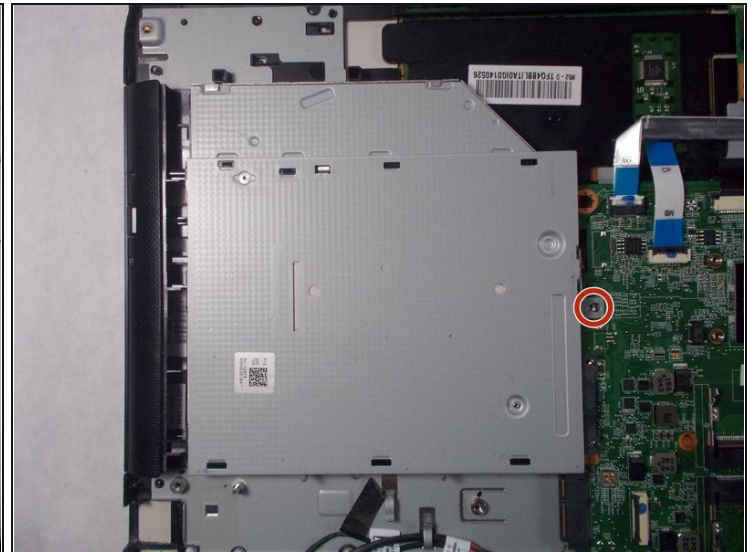
Step 4 — Back Panel



- Remove all 6.5 mm Philips head screws on the back cover of the laptop with a Philips #00 screwdriver.
- Use the plastic opening tool to remove the back cover from the laptop.

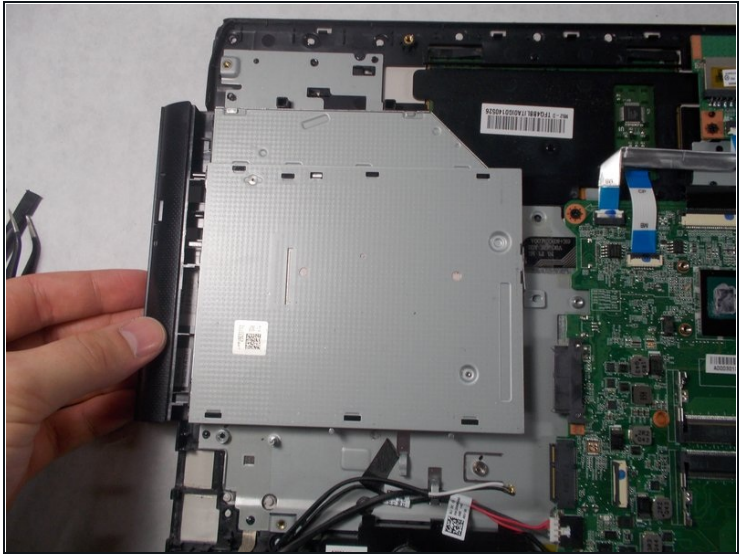
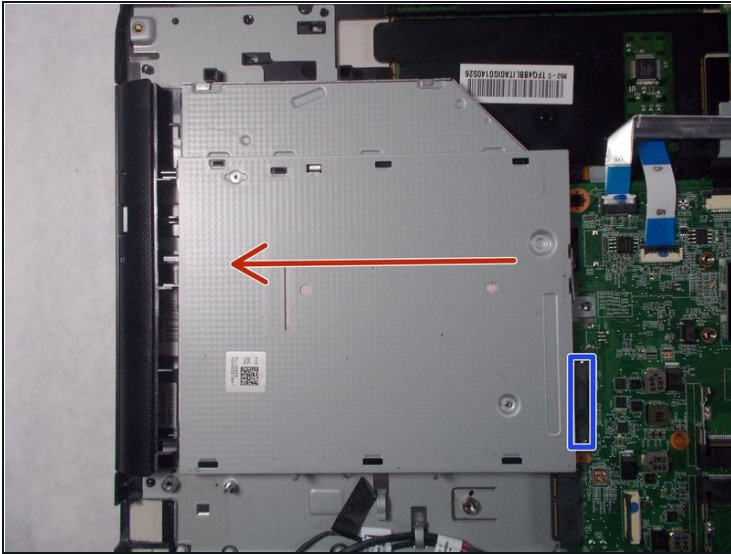
⚠ Be aware that static discharge can cause damage to sensitive electrical components within the computer. To avoid this you can wear an [anti-static wrist strap](#).

Step 5 — CD Drive



- Remove the 3 mm Philips head screw that connects the CD drive to motherboard with a Phillips #00 screwdriver.

Step 6



- Gently pull the CD drive out, disconnecting it from the motherboard connector marked in blue.

To reassemble your device, follow these instructions in reverse order.