



Gateway M-2626u RAM Replacement

If your laptop is running slow or crashes during intensive processes, a RAM upgrade may help. To do so, follow this guide.

Written By: Tanya Jain



INTRODUCTION

If your laptop keeps crashing or is running slow, then consider replacing the RAM of your device using this guide here.

TOOLS:

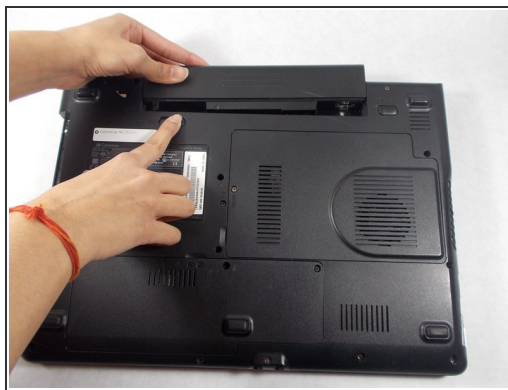
- [Phillips #1 Screwdriver](#) (1)
 - [iFixit Opening Tools](#) (1)
-

Step 1 — Battery



- ⚠ To prevent injury, make sure the laptop is not plugged in while removing the battery!
- Make the switch in the upper right corner of the turned over laptop is switched to the "unlocked" position. (the unlocked padlock icon)

Step 2



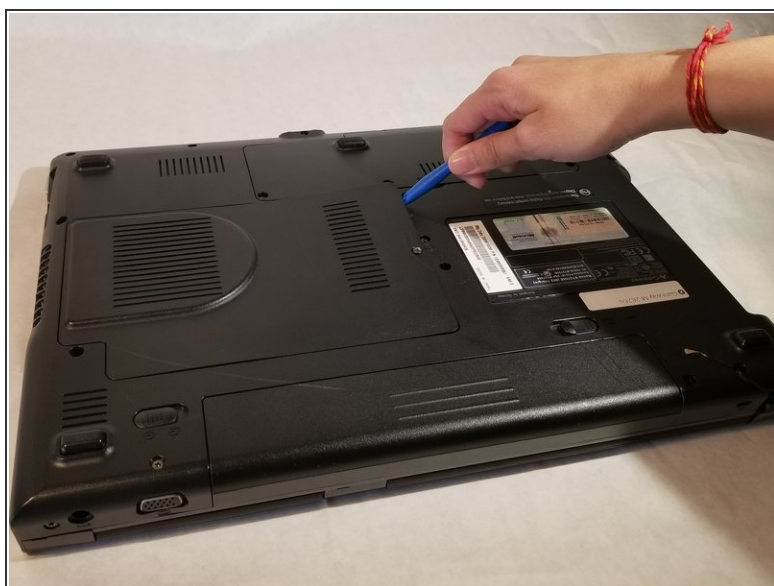
- Push the switch to the right, toward the inside of the computer to dislodge the battery.
- Finally, pull the battery outwards and away from the laptop as depicted in this image.

Step 3 — Back Panel



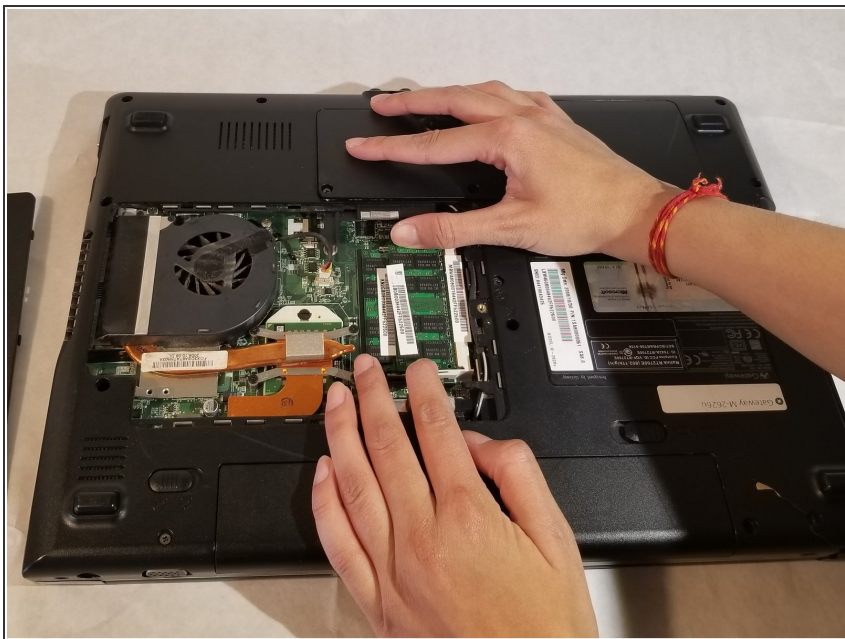
- Using the Phillips #1 screwdriver, remove the four 6mm screws on the back of the laptop.

Step 4



- Insert the plastic prying tool and pry the back panel off starting at an edge and moving your way around it.

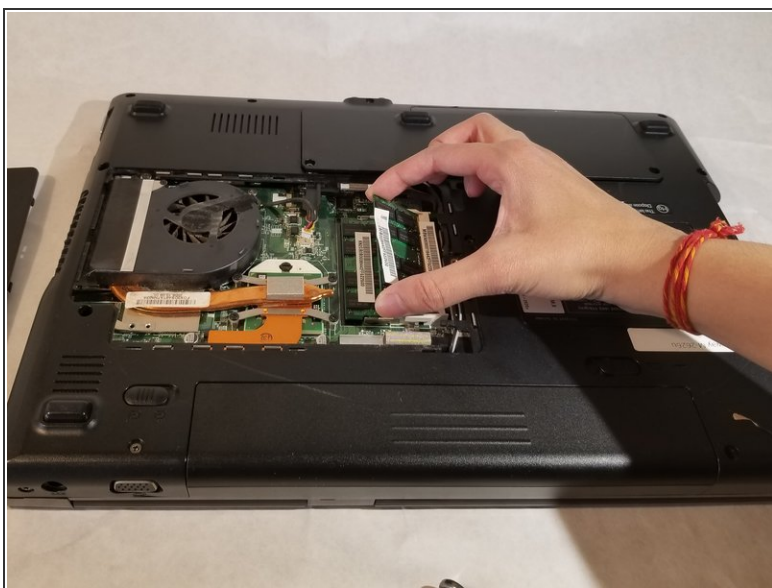
Step 5 — RAM



⚠ Remember to always remove or disconnect the battery!

- Push outwards on the metal tab to unlock the RAM stick from its position.

Step 6



- Lift up and remove the RAM from the device.
- i Follow the same steps to remove the second RAM stick from your device.

To reassemble your device, follow these instructions in reverse order.