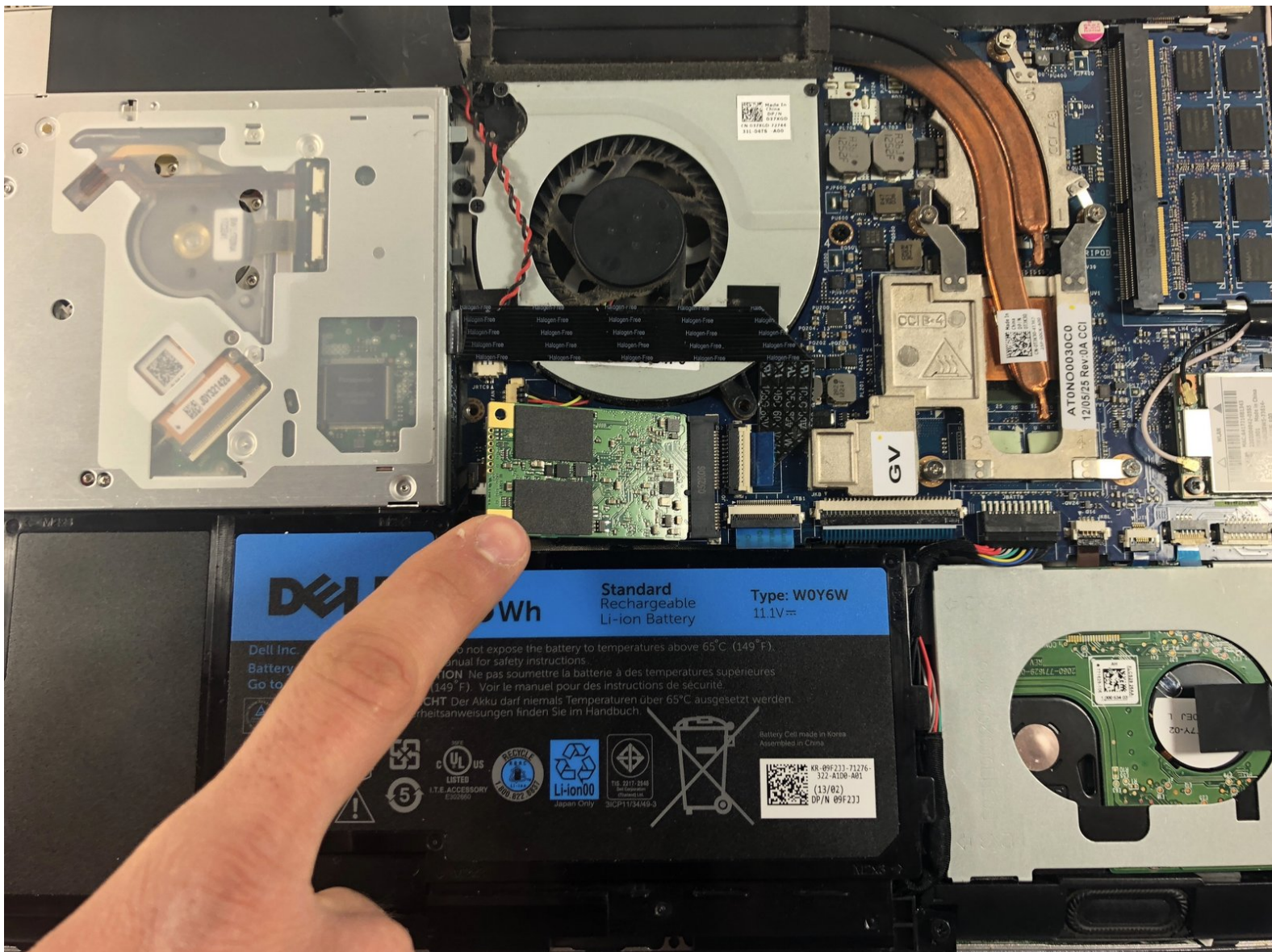




# Dell XPS 15 L521X SSD Replacement

This guide will help you replace the SSD or solid state drive in your Dell XPS.

Written By: SHELDON SANTOS



---

## INTRODUCTION

The SSD replacement only requires the removal of one phillips head screw. This is a very simple replacement, but it doesnt end after replacing the SSD. You may need to reinstall windows onto your Dell XPS.



### TOOLS:

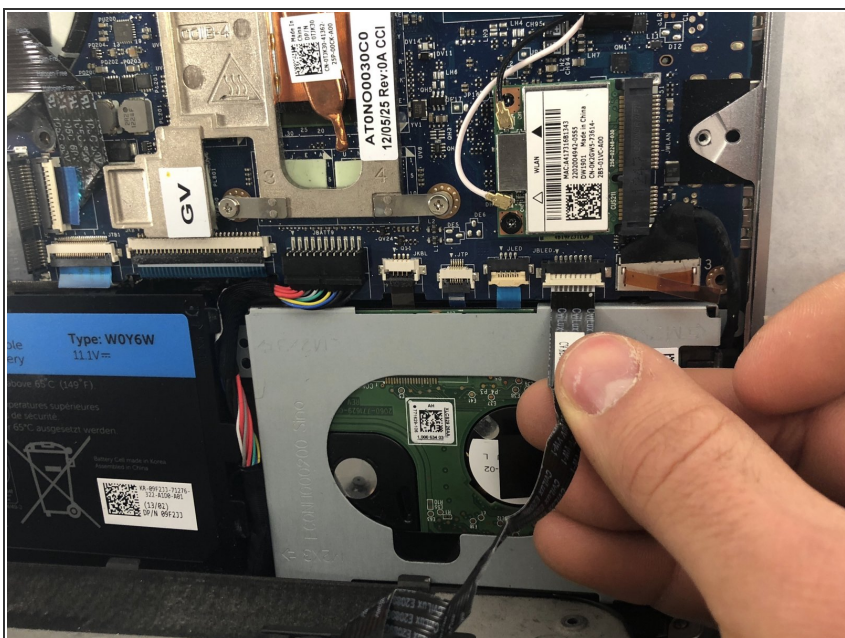
- [Phillips #0 Screwdriver](#) (1)
  - [T5 Torx Screwdriver](#) (1)
-

## Step 1 — Back Panel



- Find and remove the two .3cm torx head screws using a T5 screwdriver.
- Find and remove the six Phillips head .3cm screws using a Phillips #0 screwdriver.

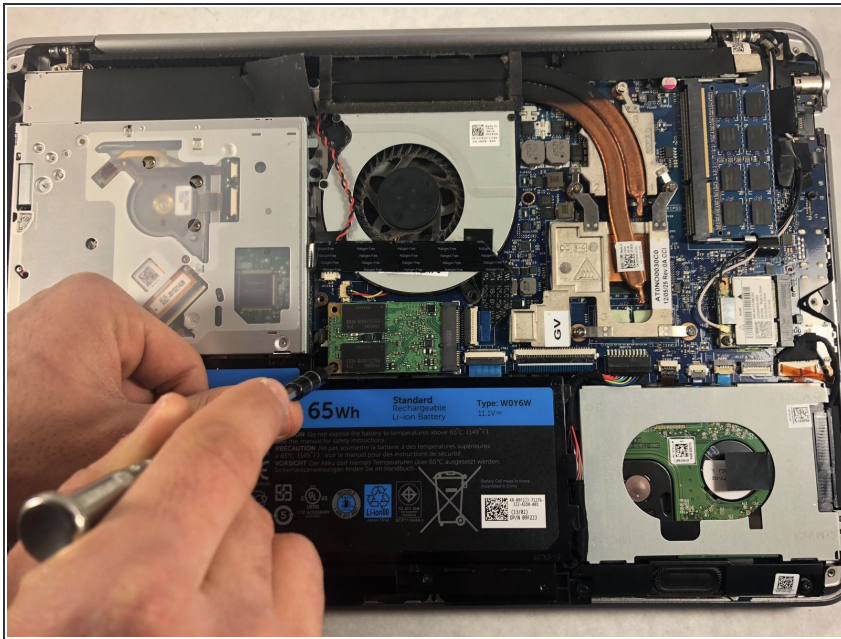
## Step 2



- Unplug the battery indicator.

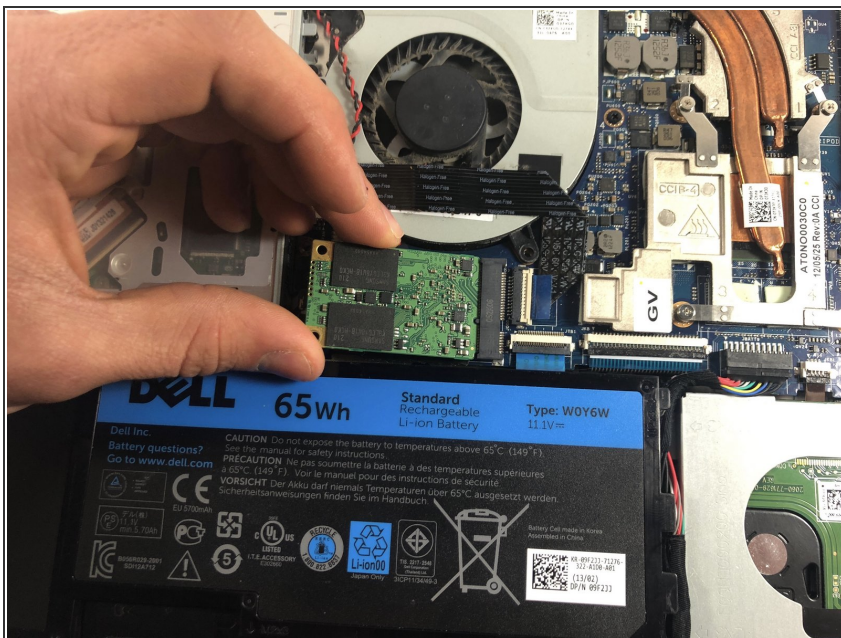


## Step 3 — SSD



- Find the single .3cm phillips head screw holding the SSD in place.
- Remove the screw holding the SSD in place.

## Step 4



- Gently pull the SSD out and replace.

To reassemble your device, follow these instructions in reverse order.