



# Xbox 360 S Teardown

This teardown will show you how to get inside your Xbox 360 S to fix what you need to.

Written By: Julian Gonzalez



---

# INTRODUCTION

This teardown will show you how to get inside your Xbox 360 S to fix what you need to.

---



## TOOLS:

- [6-in-1 Screwdriver](#) (1)
  - [TR10 Torx Security Screwdriver](#) (1)
-

## Step 1 — Xbox 360 S Teardown



- Slide latch back and pull up to take the part of the side cover off.

## Step 2



- Take a flat head screwdriver and pull up on the two ends of the side cover.

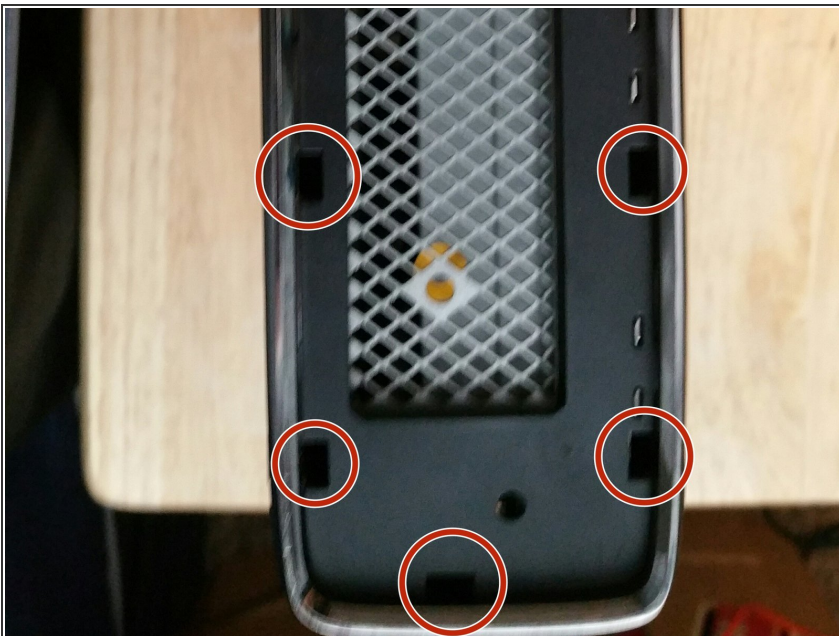


### Step 3



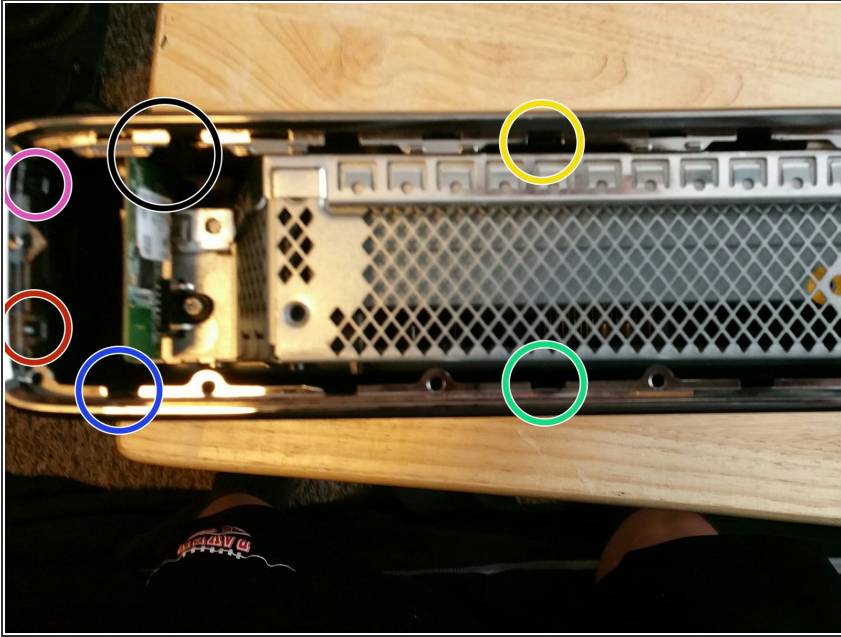
- It would be a good idea to take out your hard drive so gently pull it out and set it aside.

### Step 4



- Take your flat head screwdriver and lift up on every hole like the ones circled in the picture until it comes off.

## Step 5



- To take off the frame, take a flat head screwdriver and pull of the latches until it comes off.

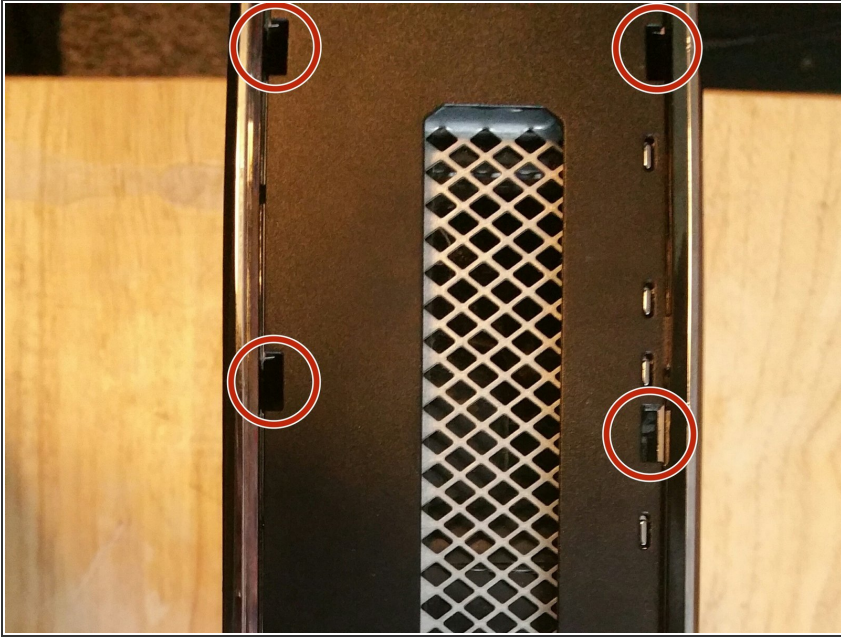
## Step 6



- Take your flat head screwdriver and place in one of the cracks of the side cover on the other side and pull up to take it off.



## Step 7



- Take your flat head screwdriver and place it in the holes like the ones in the picture until the piece comes off.

## Step 8



- Take a T10 Torx screwdriver and unscrew your network chip so you don't ruin it.

## Step 9



- Take your flat head screwdriver and unlatch the two latches and then place a different screwdriver through the latch so it doesn't latch.

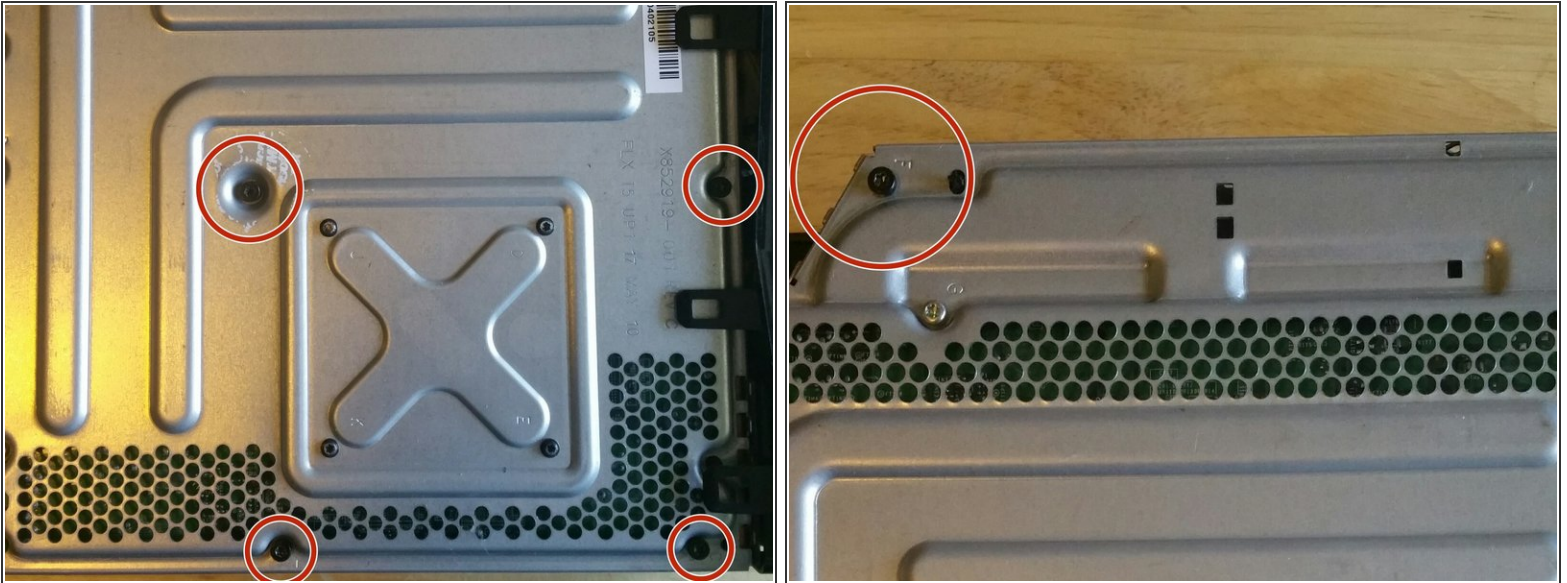
## Step 10



- On the other side, take your flat head screwdriver and unlatch the latch. There is a harder latch farther inside so you have to stick the screwdriver far down and try to find it by feeling around. It helps to push both sides of your Xbox security sticker.

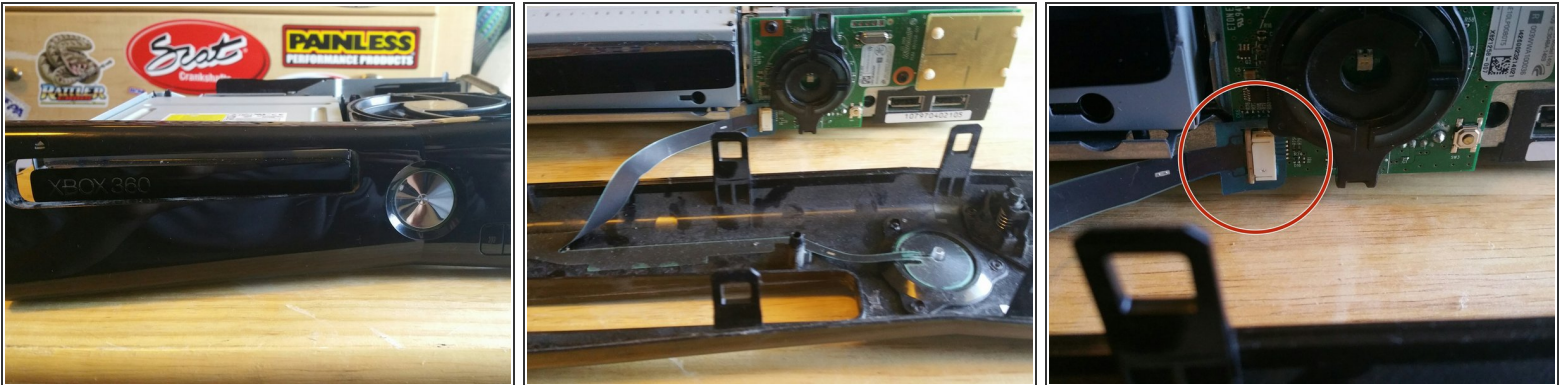


## Step 11



- Use your T8 and T10 Torque screwdriver and take out the five black screws that are shown in the picture.

## Step 12



- Take your front cover with your home and eject button and lay it down in front of the console. The front cover is connected to a power source by the home button. Be very careful to pull it over and then out so you don't break it.



## Step 13



- This is what you will see when you are done with all the previous steps. For other teardowns like the disc tray or power source, look at [ifixit.com](http://ifixit.com) to get the best on how to teardown something.