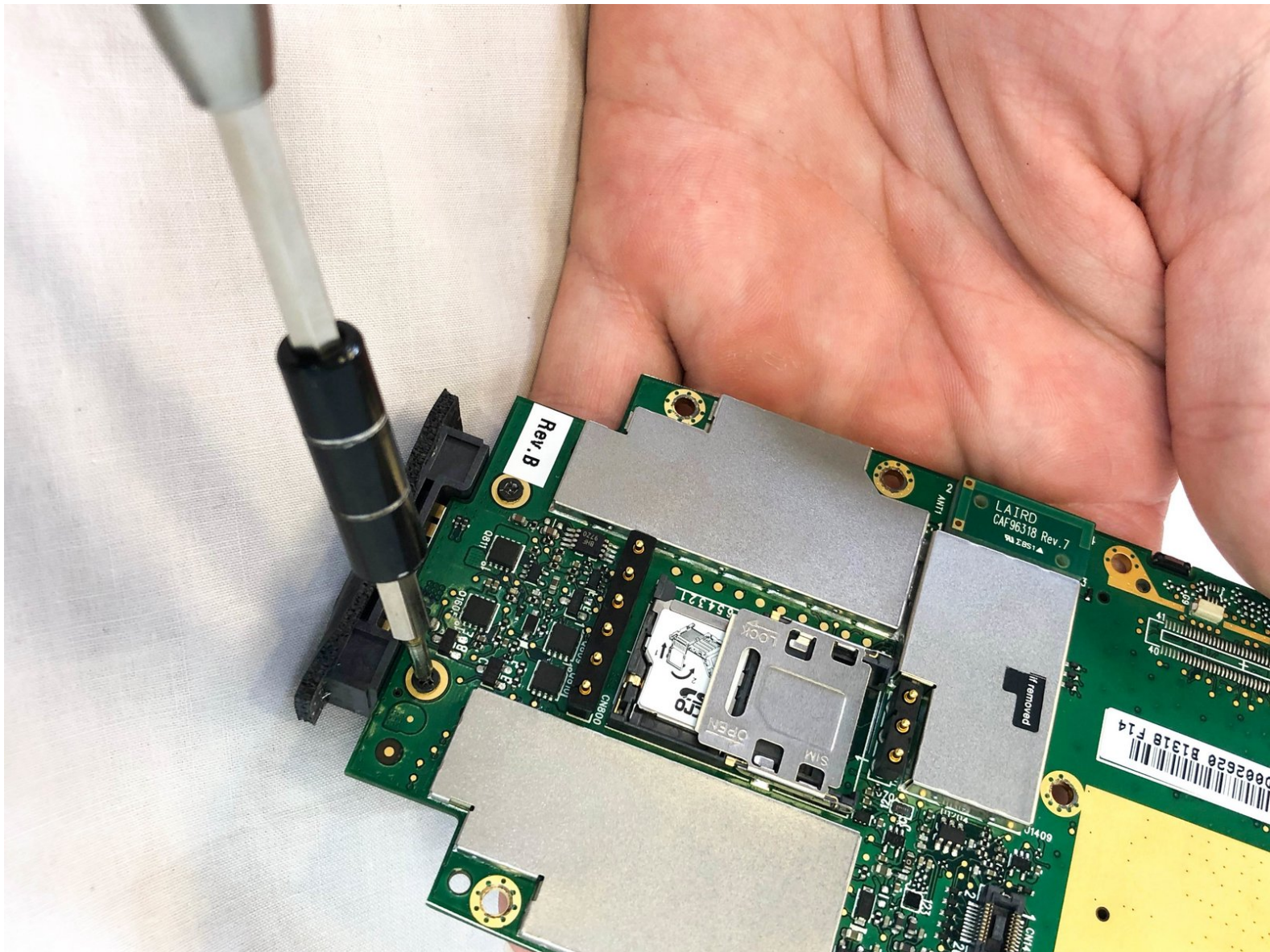




Motorola MC5590 Charging Port Replacement

This guide will help the user to replace the charging port on the MC55 series phone.

Written By: Tyler Jean



INTRODUCTION

The MC55 series device is intended for industrial and commercial use. Thus, parts like the charging port can become damaged by extended use and wear. This guide will help the user to break down and replace the charging port of the MC5590.



TOOLS:

- [Phillips #0 Screwdriver](#) (1)
 - [Phillips #00 Screwdriver](#) (1)
 - [Phillips #000 Screwdriver](#) (1)
 - [iFixit Opening Tools](#) (1)
-

Step 1 — Battery



- Push in the battery release button.

Step 2



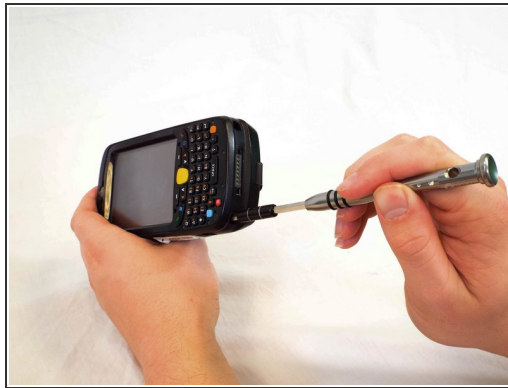
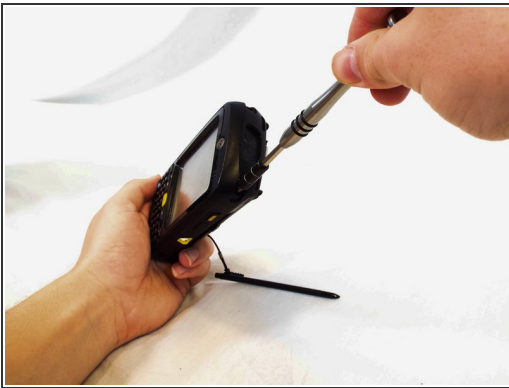
- Pull out battery.

Step 3 — Keyboard



- Remove the two rubber plugs on the top of the device by pushing them up and out of the phone.

Step 4



- Remove the four 1cm Phillips #0 screws from the top and bottom of the phone.

Step 5



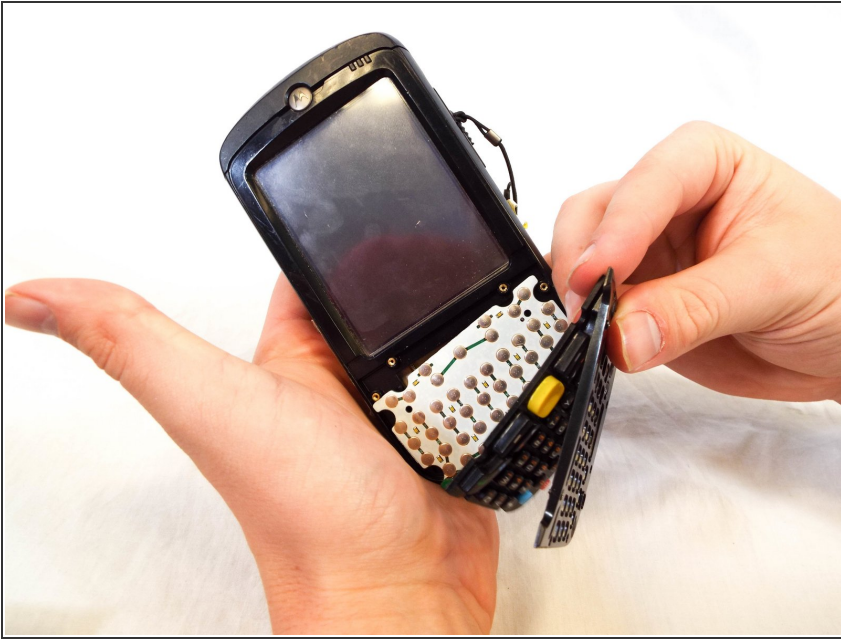
- Use a plastic opening tool to remove the keyboard cover by prying up on its perimeter.

Step 6



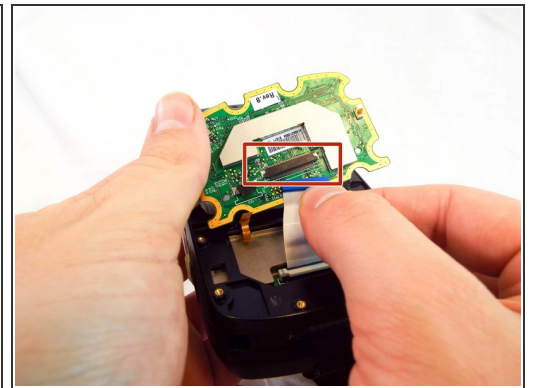
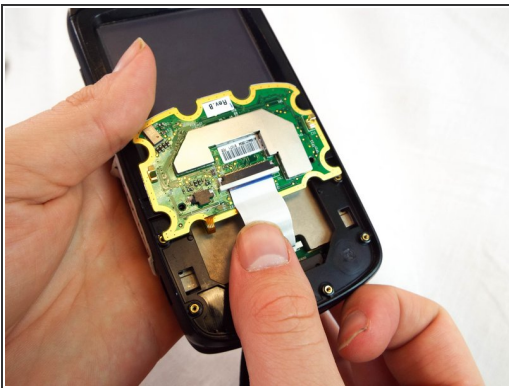
- Remove the eight 4mm Phillips #00 screws from the keyboard cover.

Step 7



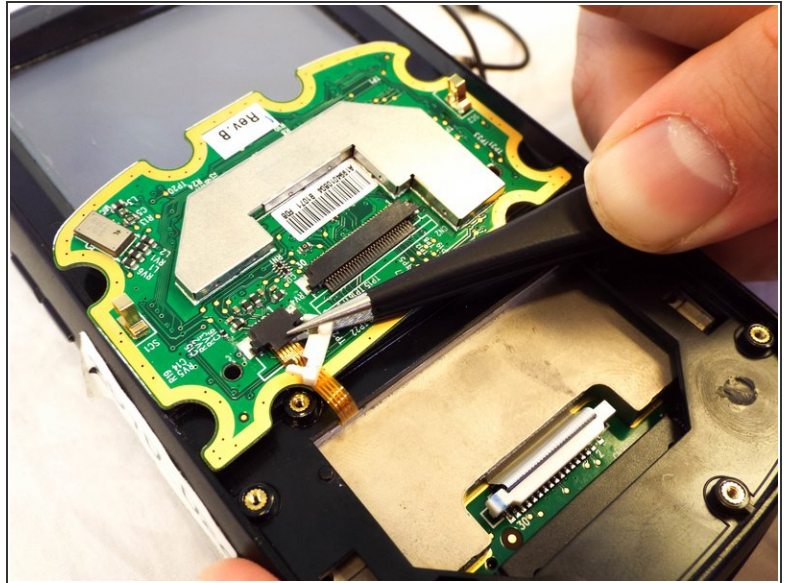
- Remove the keyboard cover.

Step 8



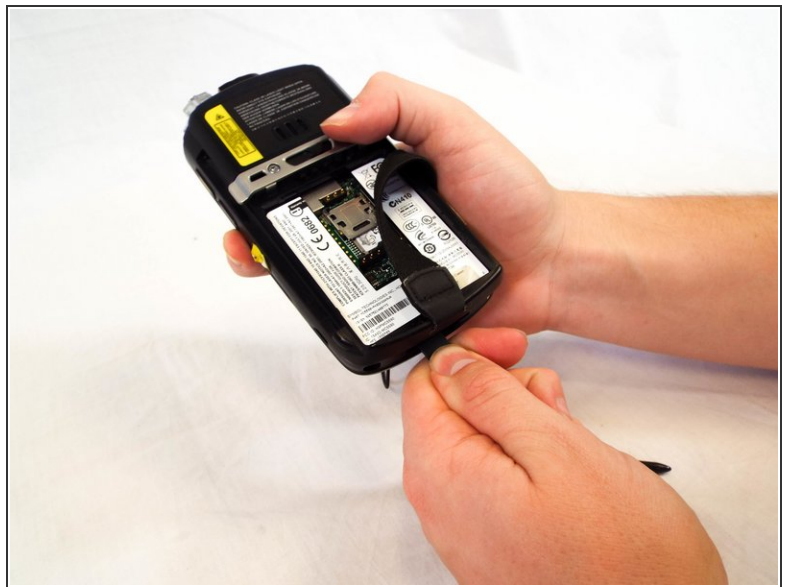
- Use a spudger to flip up the retaining flap on the keyboard ribbon cable [ZIF](#) socket.
- Pull the ribbon cable out of the socket.

Step 9



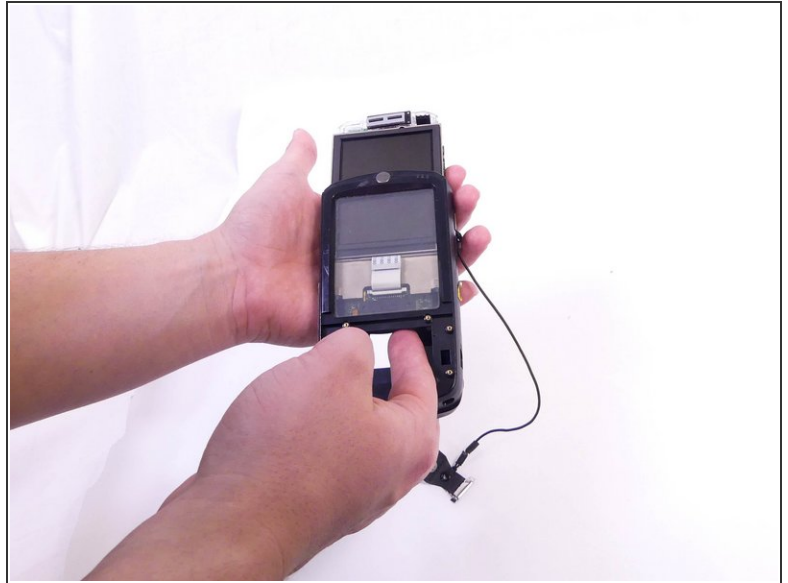
- Use a spudger to flip up the retaining flap on the display ribbon cable [ZIF](#) socket.
- Remove the keyboard from the device.

Step 10 — Speaker



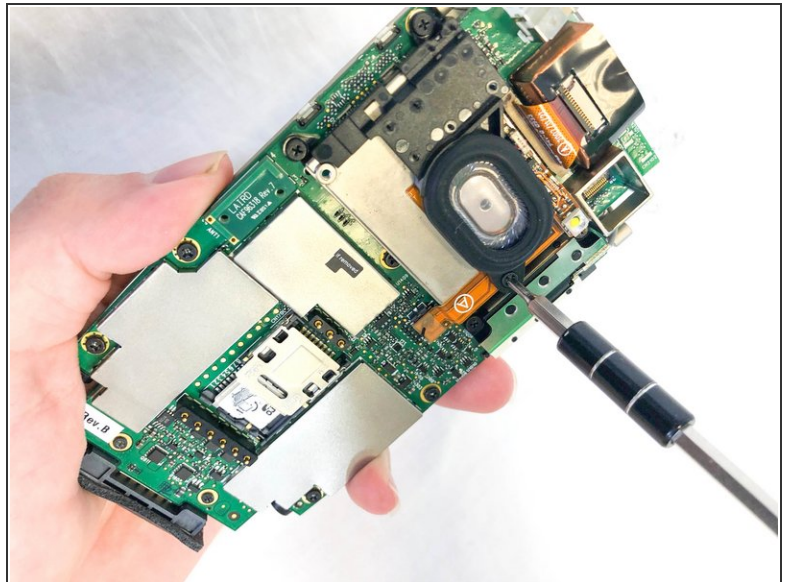
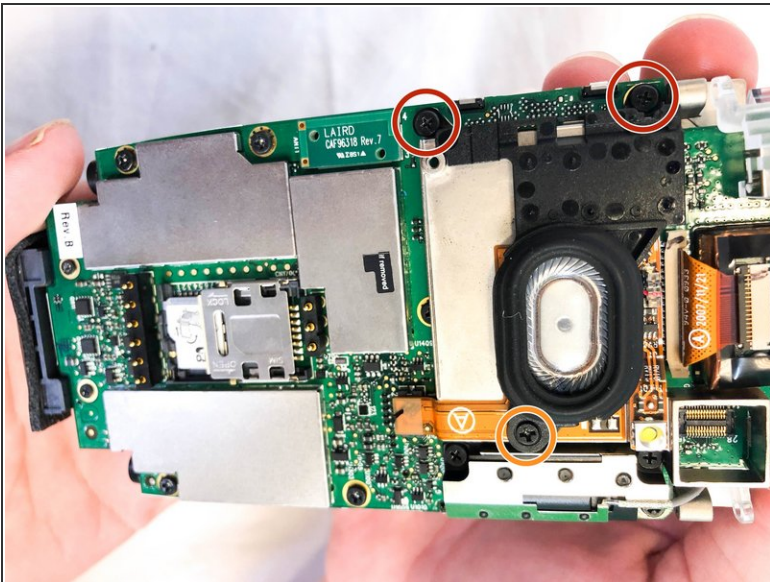
- Pull the black rubber tabs up gently and remove them.

Step 11



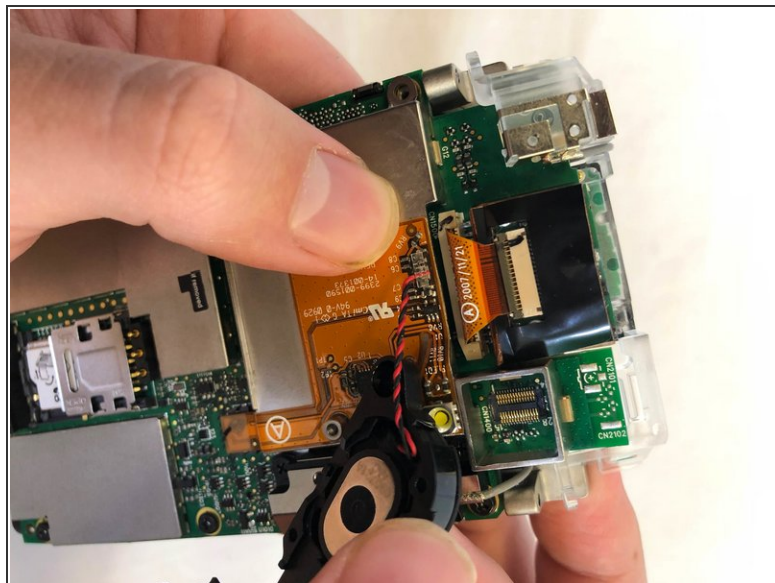
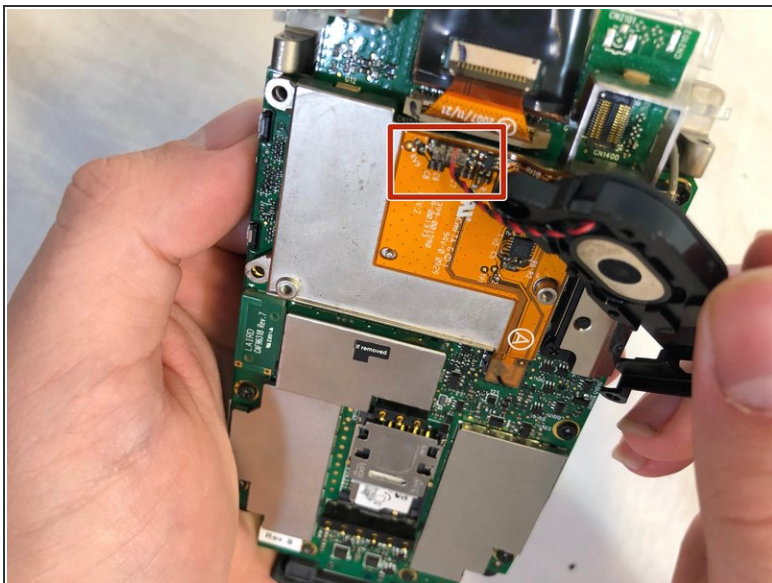
- Using your finger, or spudger, push the motherboard out from the bottom.

Step 12



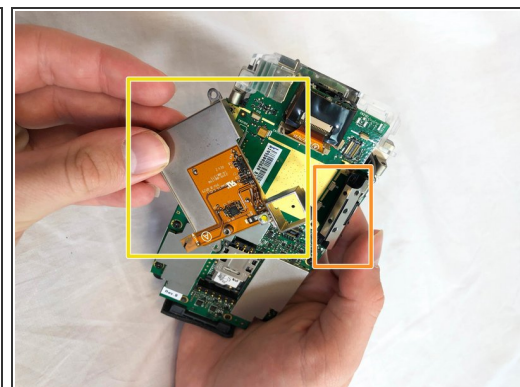
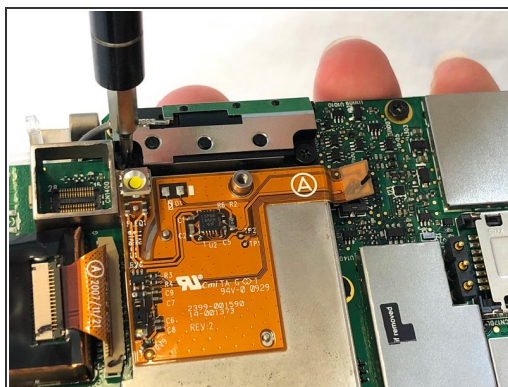
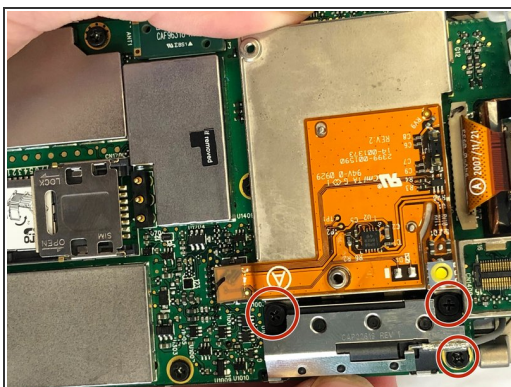
- Remove the three Phillips #00 screws from the motherboard:
 - Two 3mm screws.
 - One 1mm screw.

Step 13



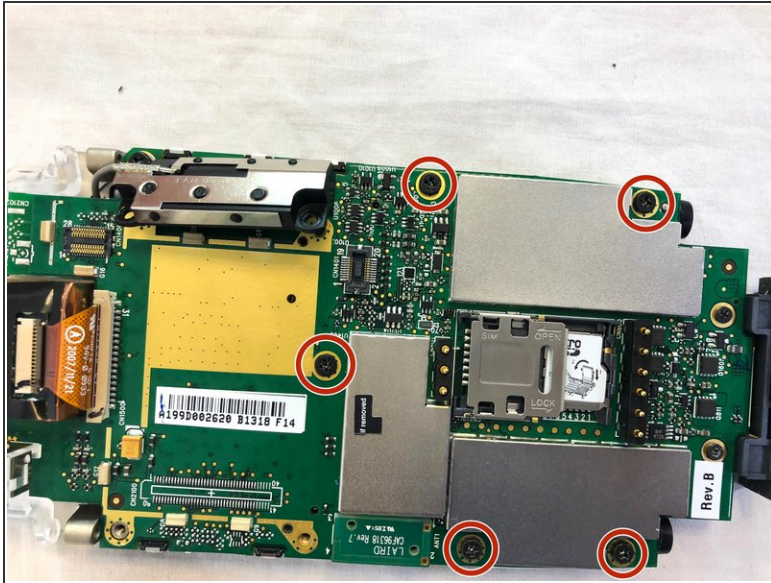
- Disconnect the speaker from the motherboard.

Step 14 — LCD Screen



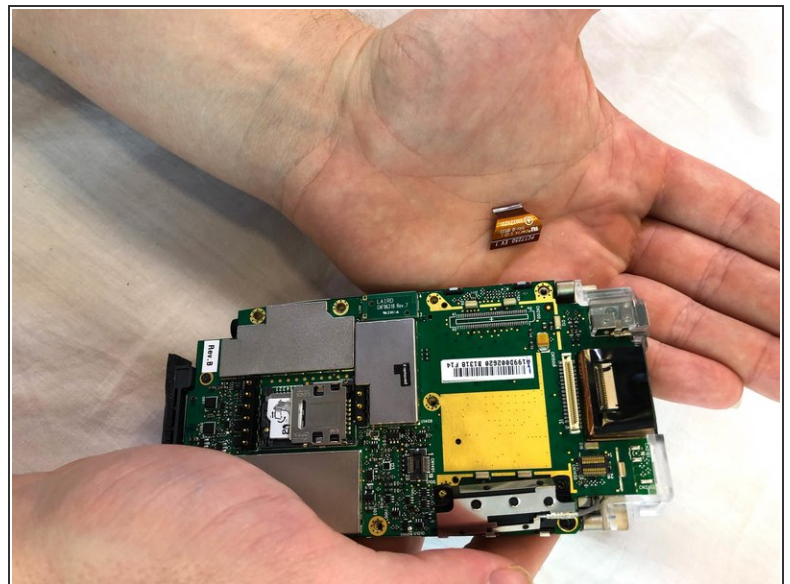
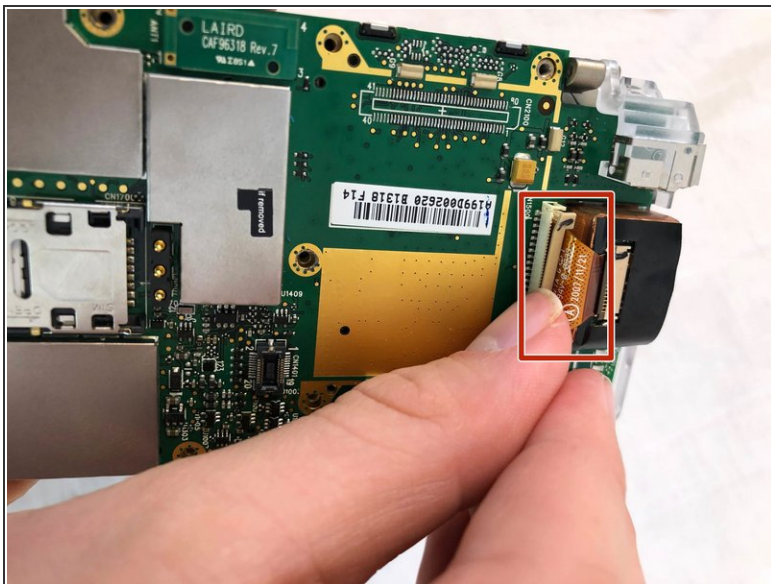
- Remove the the 3mm Phillips #00 screws from the flex cable cover and antenna.
- Remove the antenna.
- Remove the flex cable cover.

Step 15



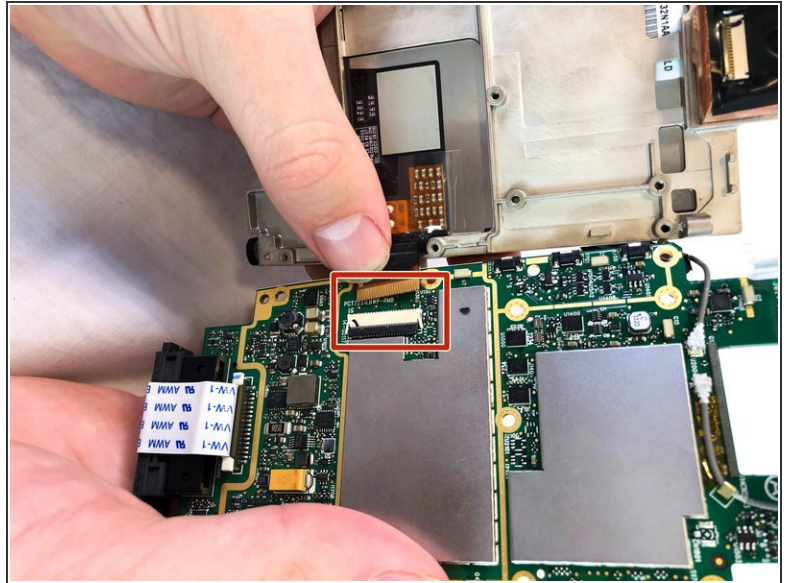
- Remove the five 3mm Phillips #00 screws from the motherboard.

Step 16



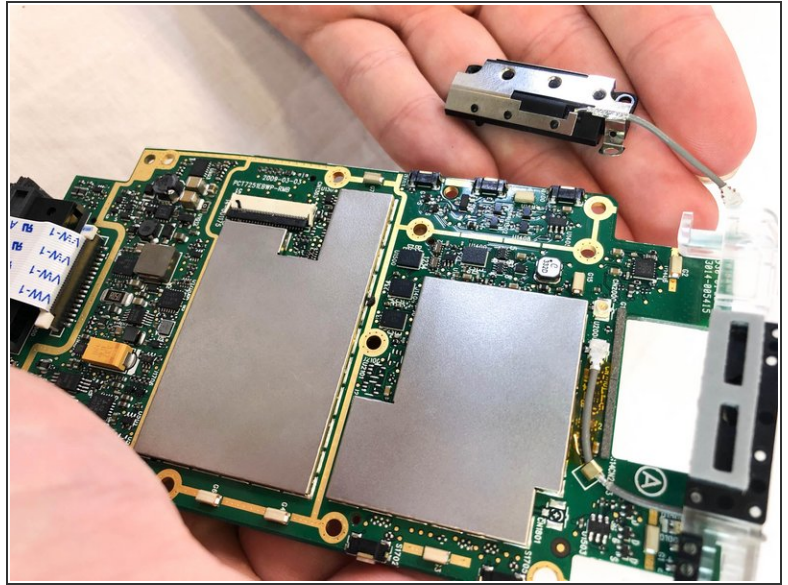
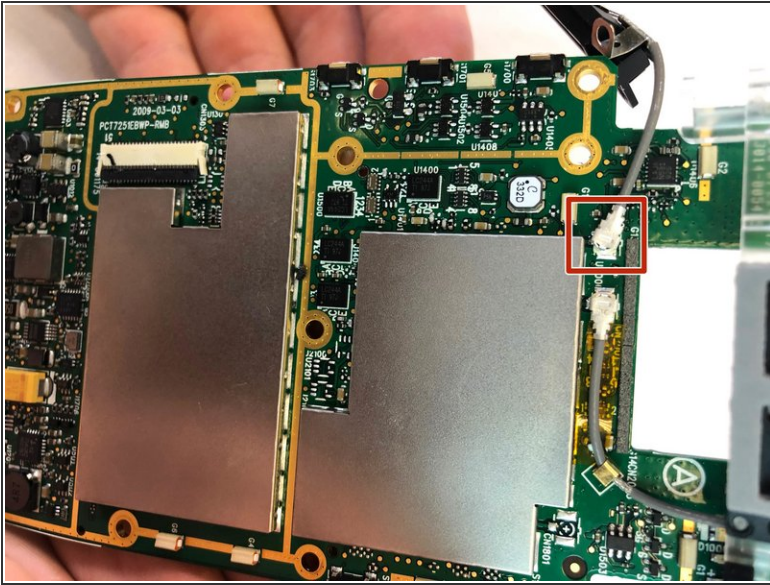
- Remove the scanner ribbon cable by pulling straight up and out.

Step 17



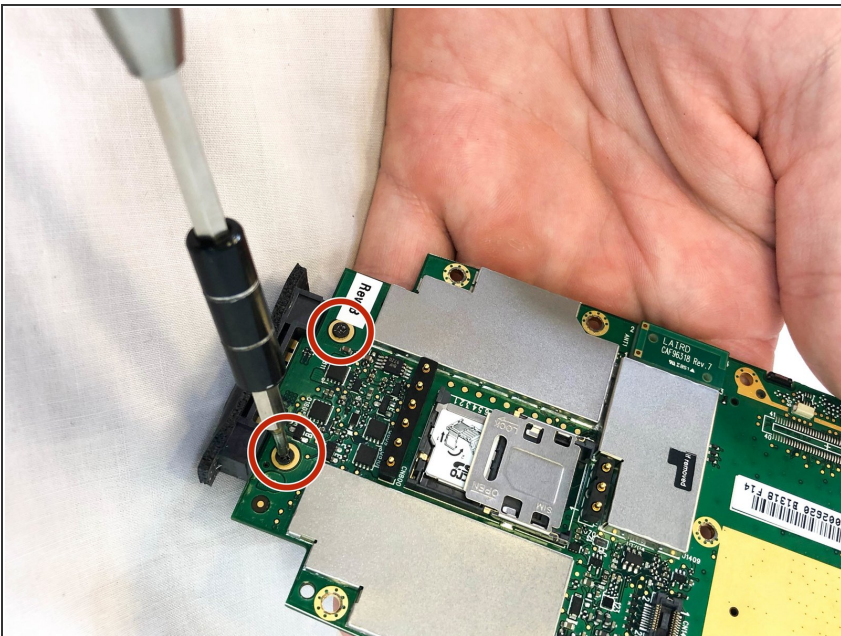
- Flip open the motherboard and the LCD screen.
- Open the LCD connector and remove the cable.
- Pull the LCD Screen and its metal bracket apart.

Step 18 — Internal Antenna



- Remove the antenna connector (red box).
- This is a snap-on connector, which can be removed by applying a gentle pull straight up from the motherboard.

Step 19 — Charging Port



- Remove the 2 screws (3 mm long) at the bottom of the motherboard using a PH00-bit screwdriver.
- Disconnect the charging port from the rest of the device.

To reassemble your device, follow these instructions in reverse order.