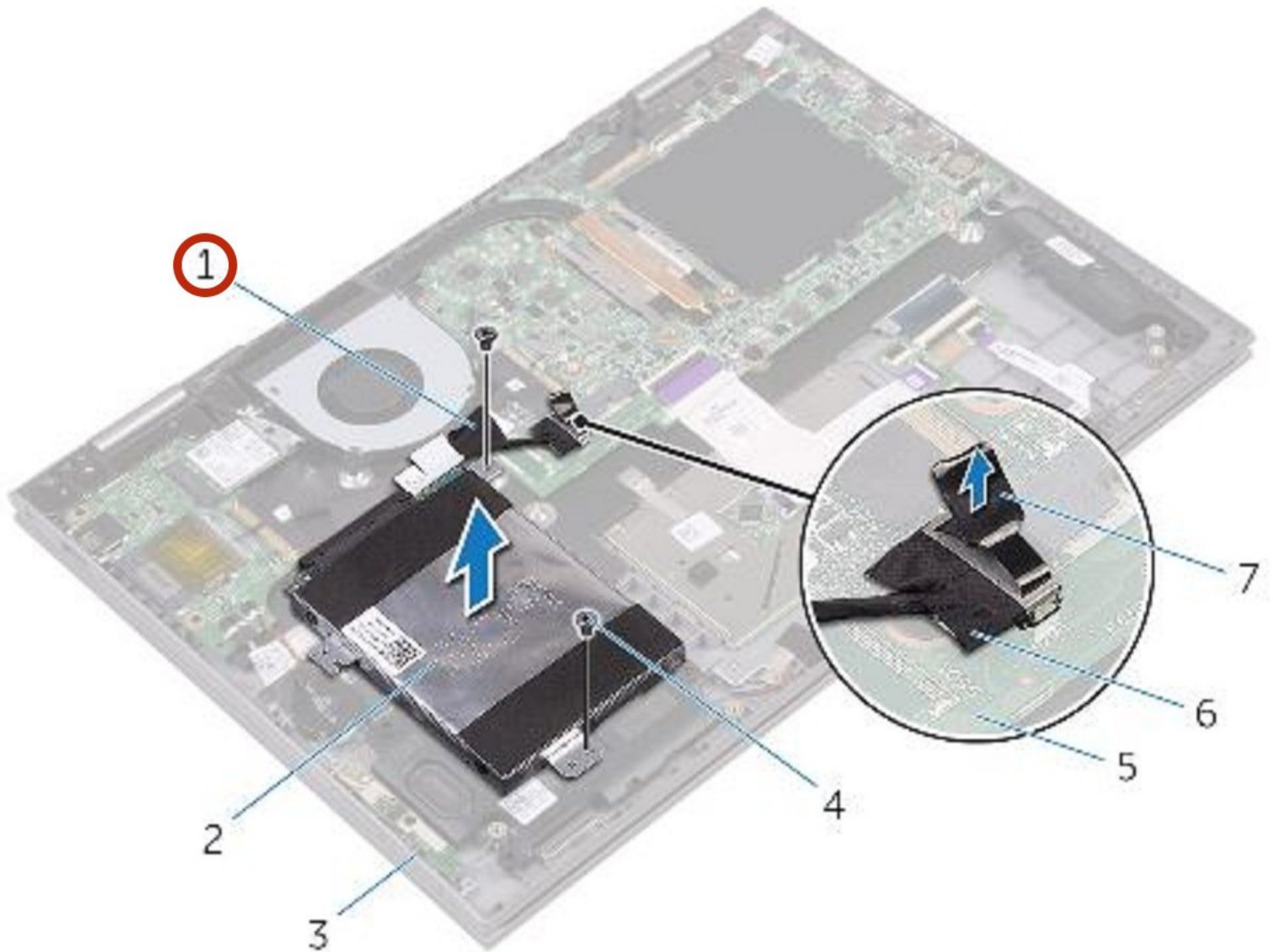




Dell Inspiron 5379 Hard Drive Replacement

Written By: Terrence15



INTRODUCTION

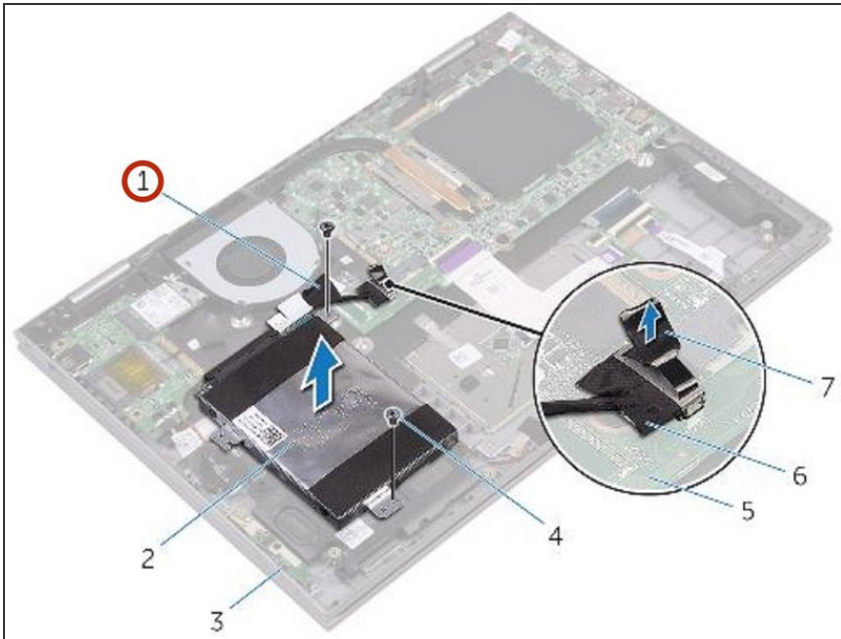
In this guide, we will show you how to remove and replace the Hard Drive.



TOOLS:

- [Phillips #0 Screwdriver](#) (1)
-

Step 1 — Peeling the Tape

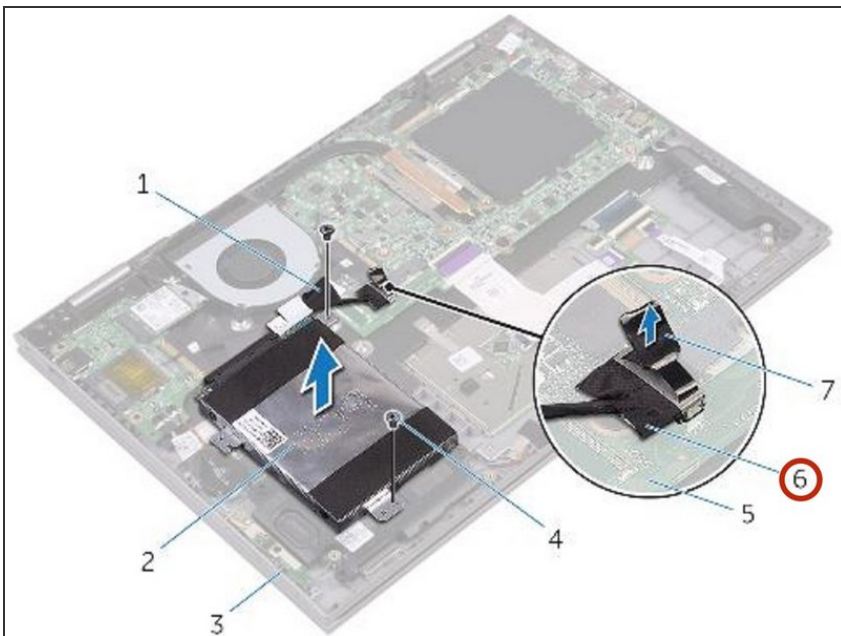


⚠ WARNING: Before working inside your computer, read the safety information that shipped with your computer and follow the steps in [Before Working Inside Your Computer](#). After working inside your computer, follow the instructions in [After Working Inside Your Computer](#).

⚠ CAUTION: Hard drives are fragile. Exercise care when handling the hard drive.

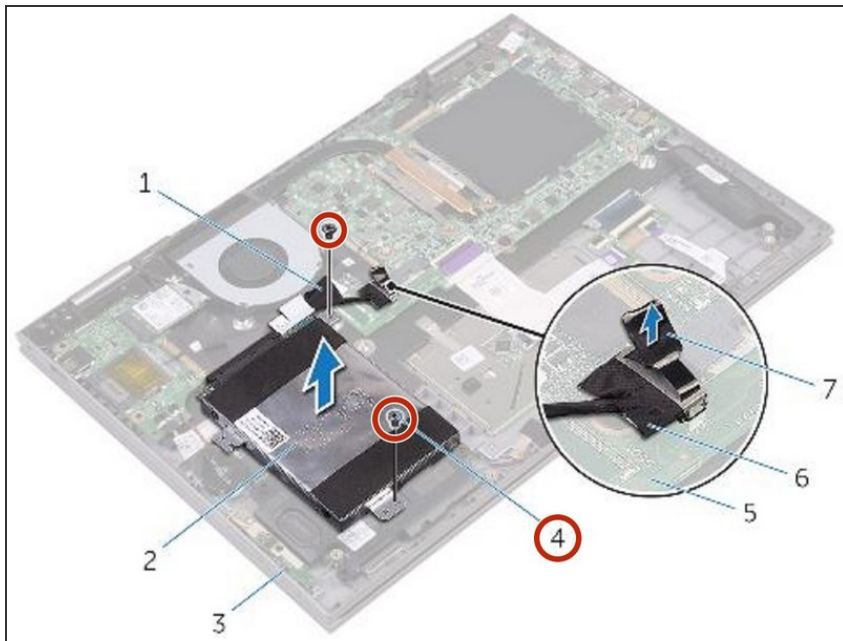
- Peel off the tape that secures the hard-drive cable to the palm-rest assembly.

Step 2 — Disconnecting the Hard Drive Cable



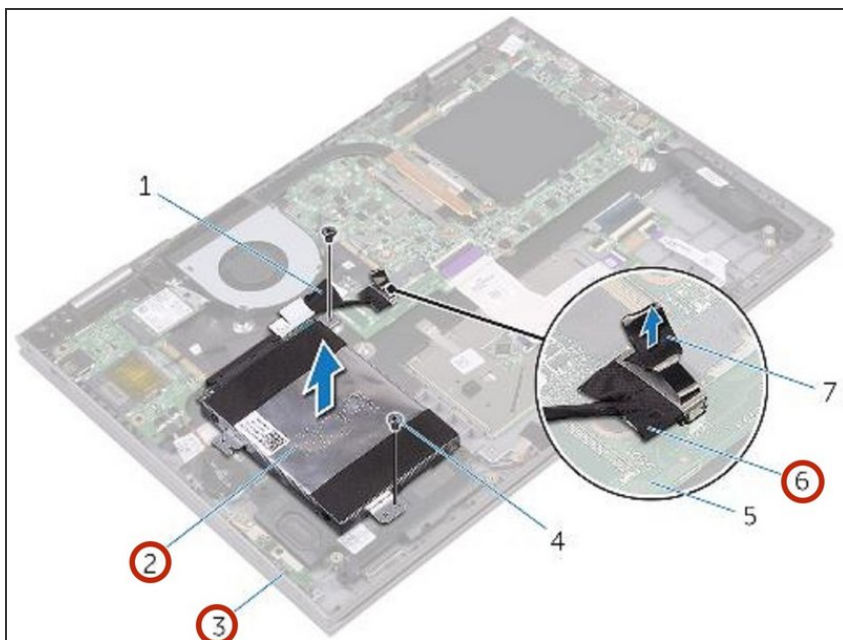
- Using the pull tab, disconnect the hard-drive cable from the system board.

Step 3 — Remove the Screws



- Remove the two screws (M2x3.5) that secure the hard-drive assembly to the palm-rest assembly.

Step 4 — Lifting the Hard-Drive Assembly



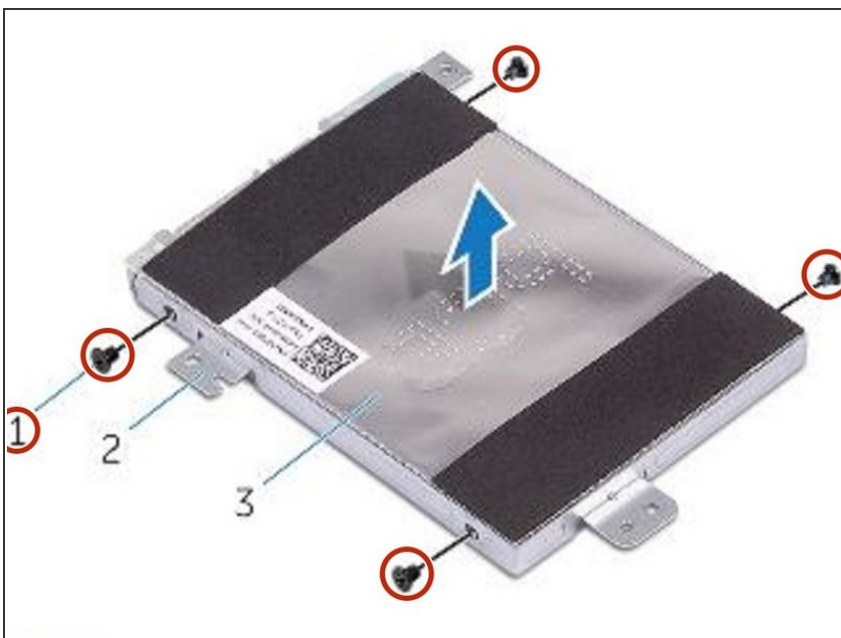
- Lift the hard-drive assembly, along with its cable, off the palm-rest assembly.

Step 5 — Disconnecting the Interposer



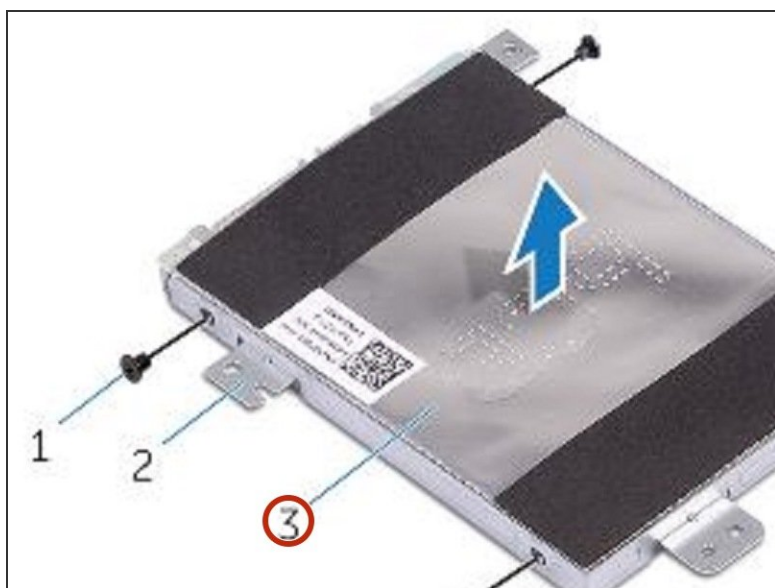
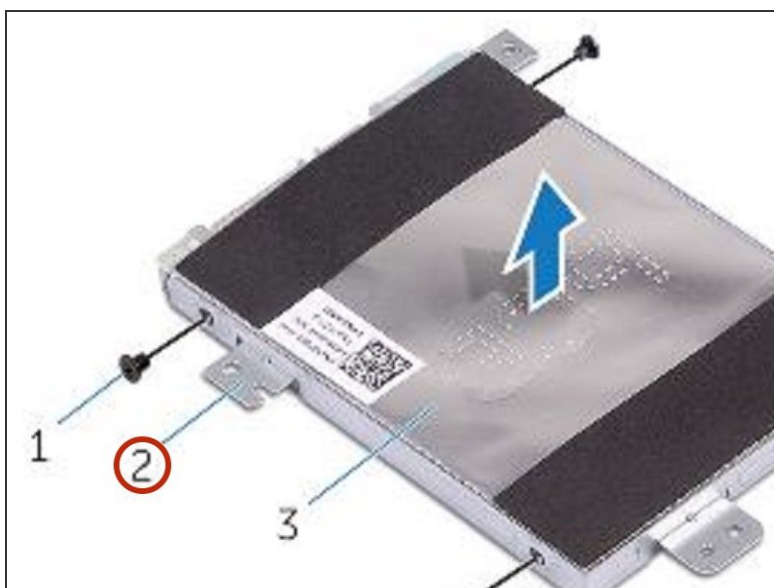
- Disconnect the interposer from the hard-drive assembly.

Step 6 — Remove the Screws



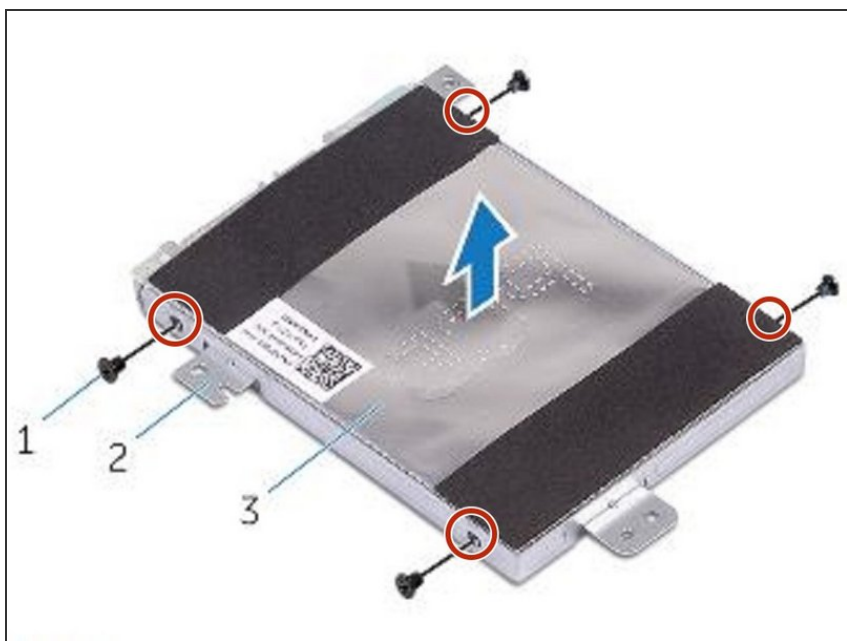
- Remove the four screws (M3x3) that secure the hard-drive bracket to the hard drive.

Step 7 — Lifting the Hard-Drive Bracket



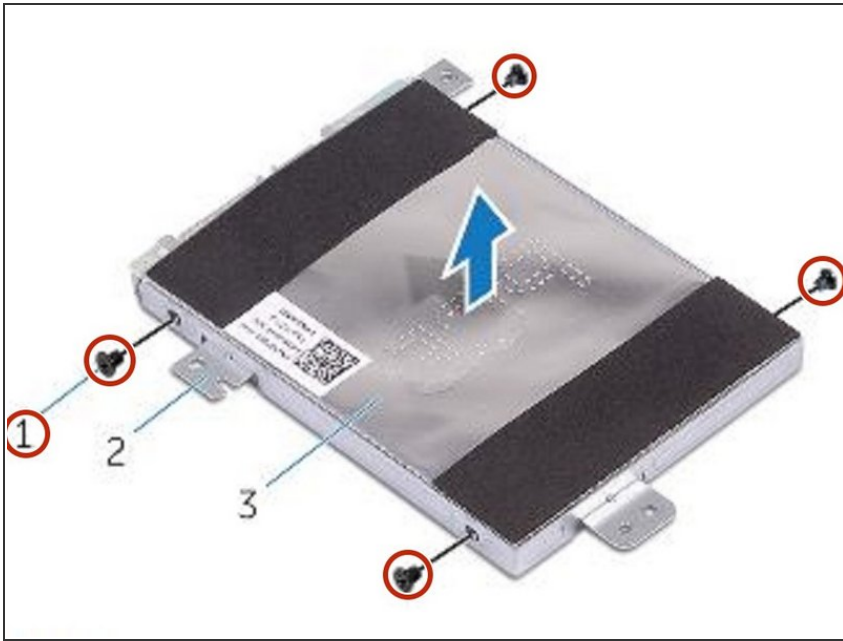
- Lift the hard-drive bracket off the hard drive.

Step 8 — Align the Screw Holes



- Align the screw holes on the **NEW** hard-drive bracket with the screw holes on the hard drive.

Step 9 — Replace the Screws



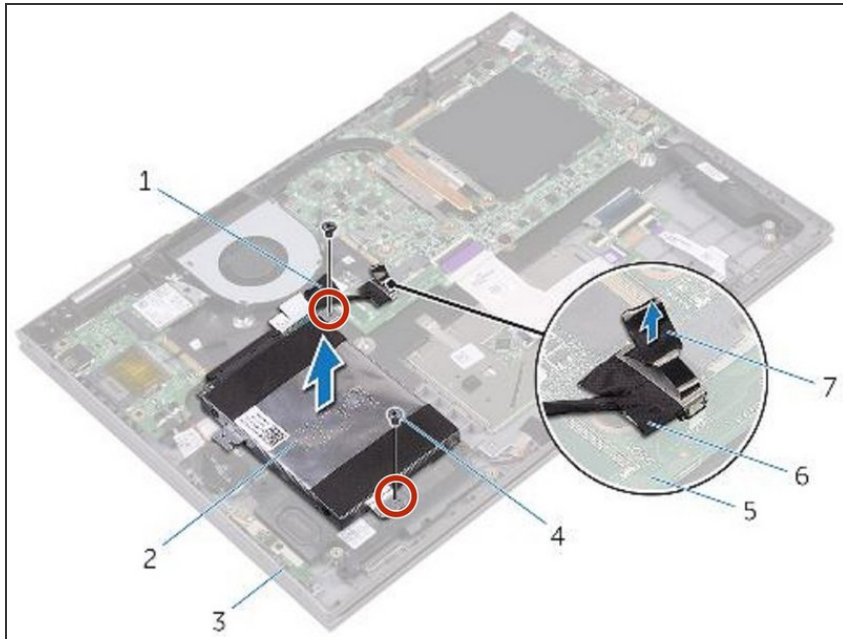
- Replace the four screws (M3x3) that secure the hard-drive bracket to the hard drive.

Step 10 — Connecting the Interposer



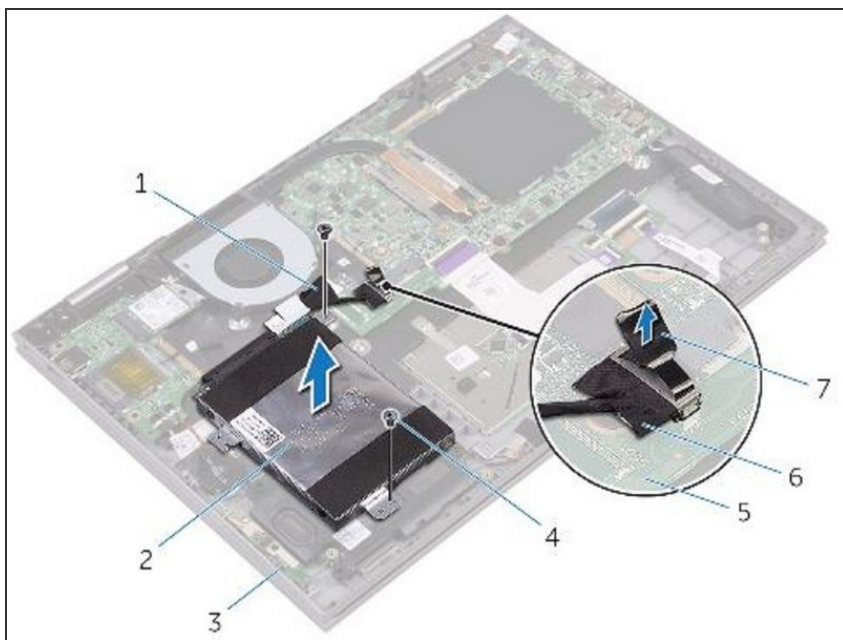
- Connect the interposer to the hard-drive assembly.

Step 11 — Align the Screw Holes



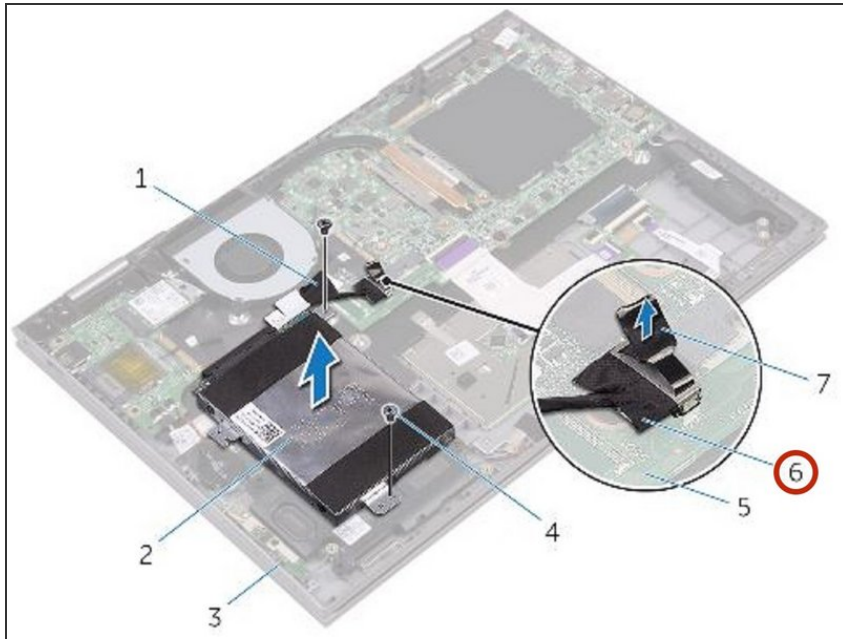
- Align the screw holes on the hard-drive assembly with the screw holes on the palm-rest assembly.

Step 12 — Replace the Screws



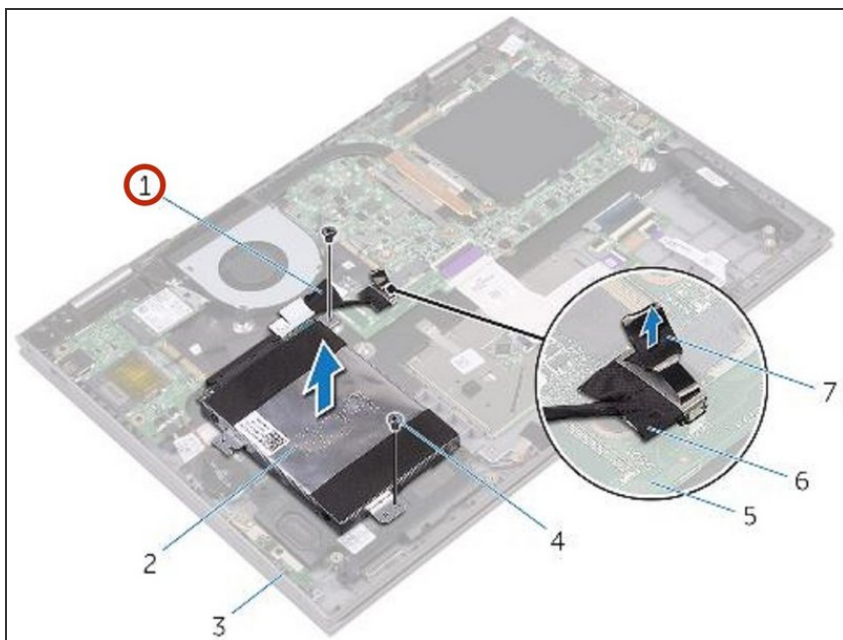
- Replace the two screws (M2x3.5) that secure the hard-drive assembly to the palm-rest assembly.

Step 13 — Connecting the Hard-Drive Cable



- Connect the hard-drive cable to the system board.

Step 14 — Adhering the Tape



- Adhere the tape that secures the hard-drive cable to the palm-rest assembly.