



# Dell Inspiron 13 1370 Display Assembly Replacement

Written By: Terrence15



---

## INTRODUCTION

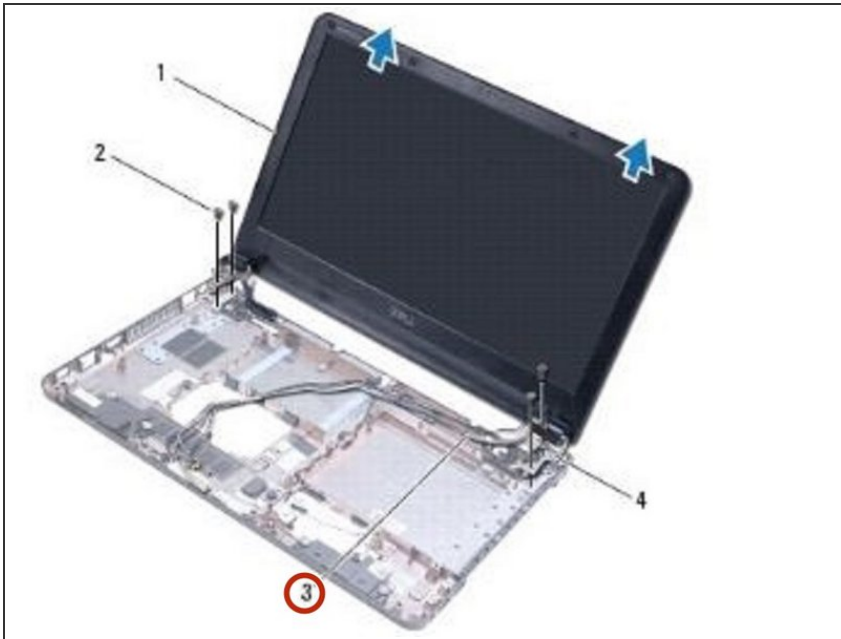
In this guide, we will show you how to remove and replace the Display Assembly.



### TOOLS:

- [Essential Electronics Toolkit](#) (1)
-

## Step 1 — Dislodging the Antenna Cables

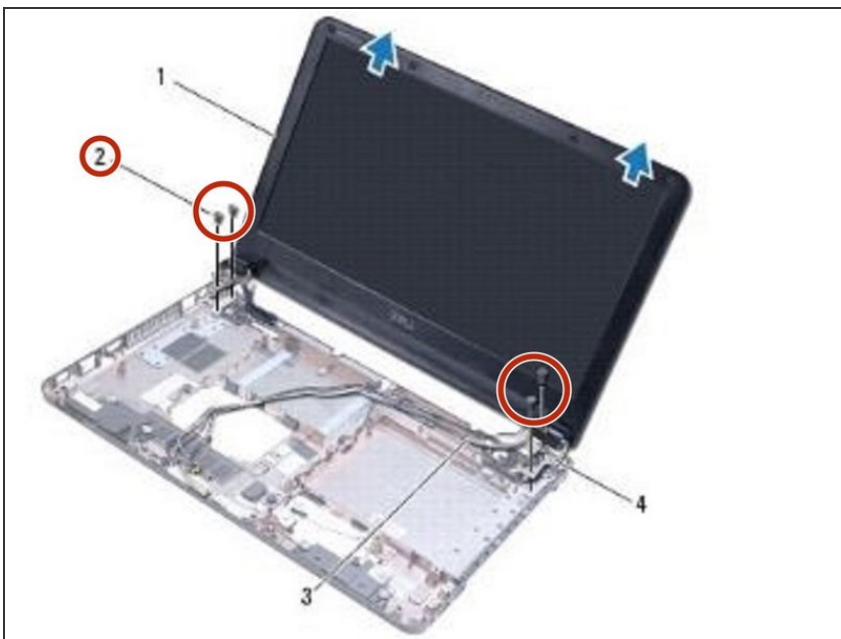


**⚠ WARNING:** Before working inside your computer, read the safety information that shipped with your computer. Follow the procedures in [Before You Begin](#).

**⚠ CAUTION:** To avoid electrostatic discharge, ground yourself by using a wrist grounding strap or by periodically touching an unpainted metal surface.

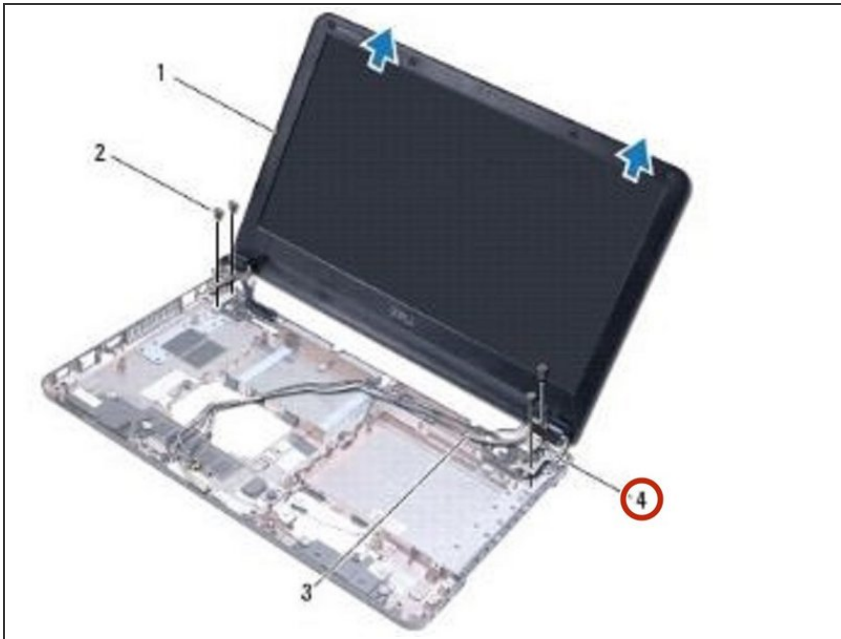
- Make a note of the Mini-Card antenna cable routing and carefully dislodge the antenna cables from the routing guides on the computer base. Pull the cables away so that they are clear of the computer base.

## Step 2 — Removing the Screws



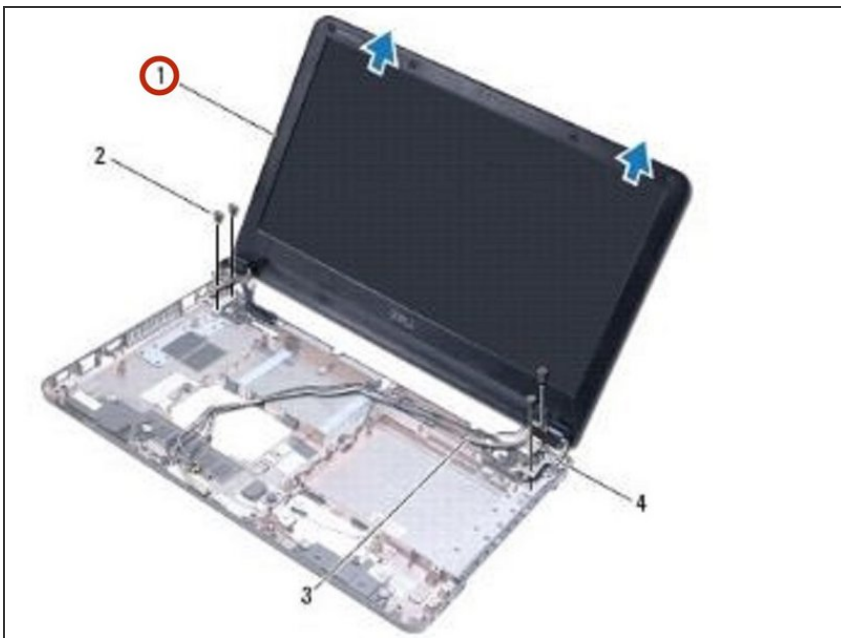
- Remove the four screws that secure the display assembly to the computer base.

### Step 3 — Sliding the Hinges



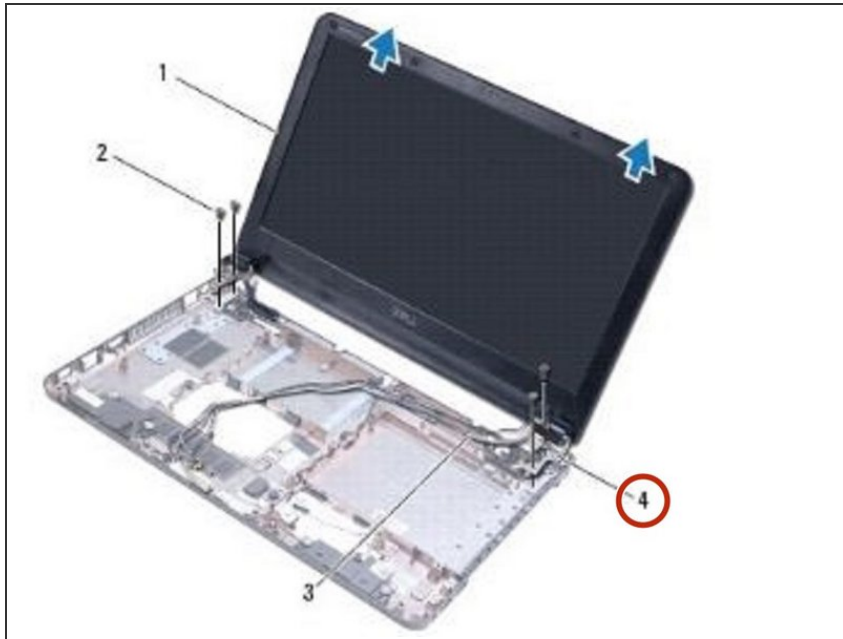
- Slide the hinges out of the slots in the computer base.

### Step 4 — Lifting the Display Assembly



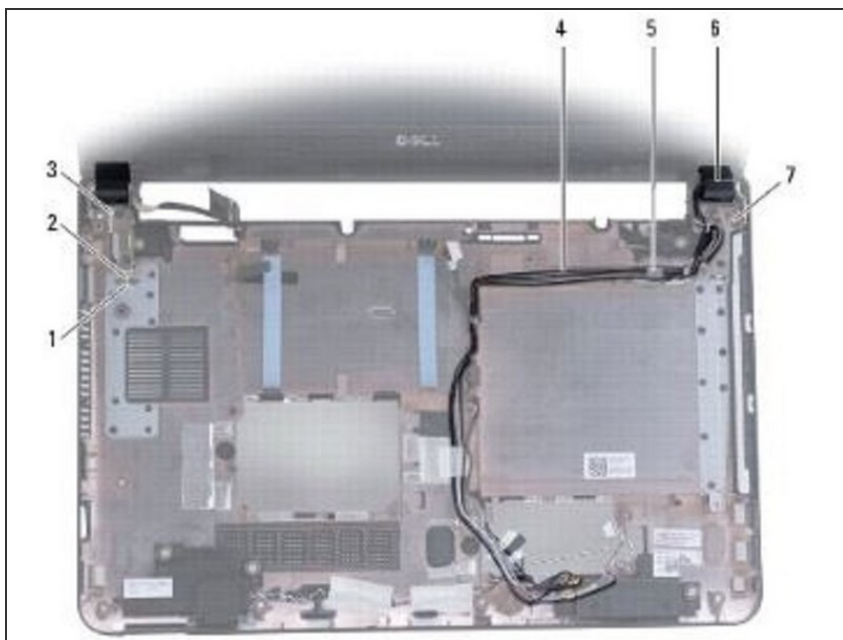
- Lift the display assembly off the computer base.

## Step 5 — Sliding the Tabs



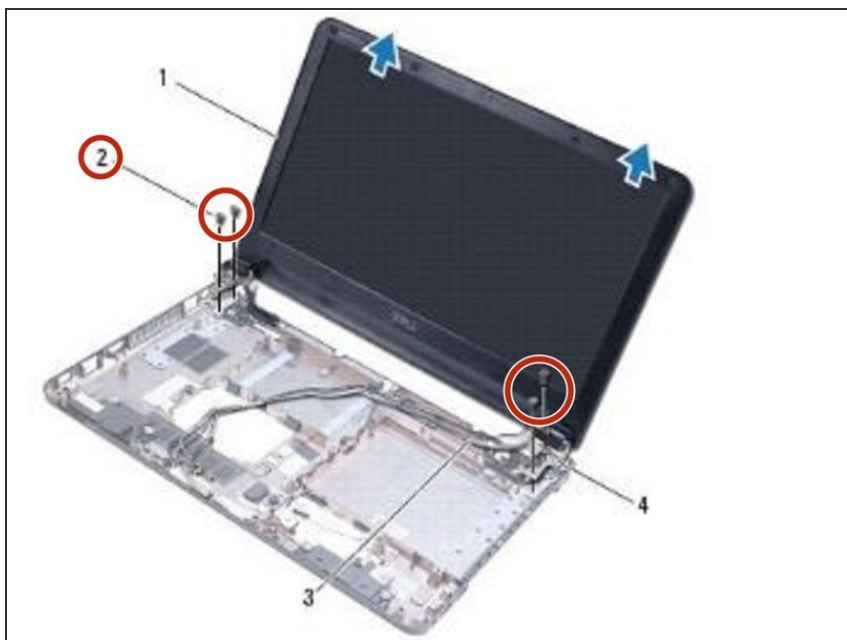
- Slide the tabs on the display hinges into the slots in the computer base.

## Step 6 — Align the Display Assembly



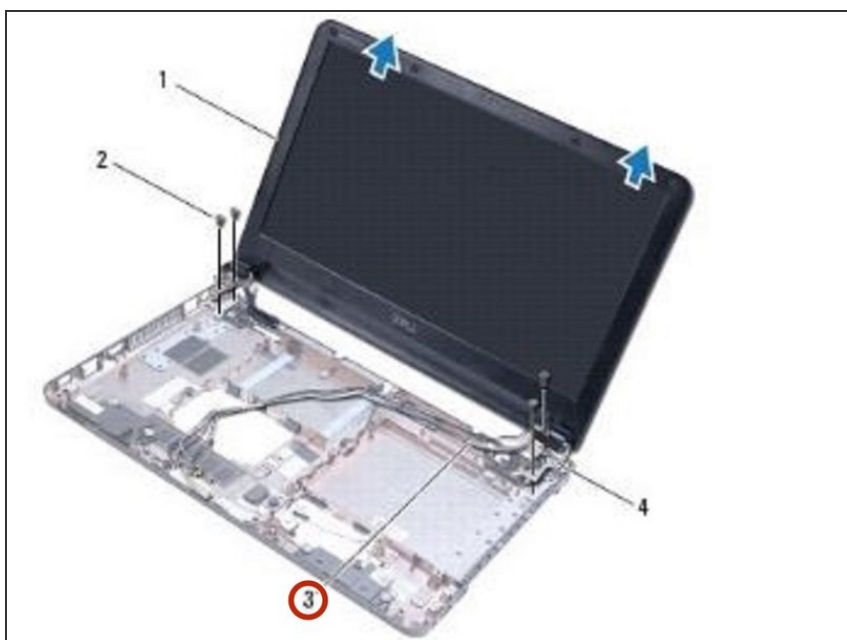
- Align the display assembly with the computer base using the alignment posts on the computer base and set the display assembly in place. Ensure the display cable and Mini-Card antenna cables route correctly through the display hinge covers.

## Step 7 — Replace the Screws



- Replace the four screws that secure the display assembly to the computer base.

## Step 8 — Routing the Cables



- Route the Mini-Card antenna cables through the routing guides on the computer base.