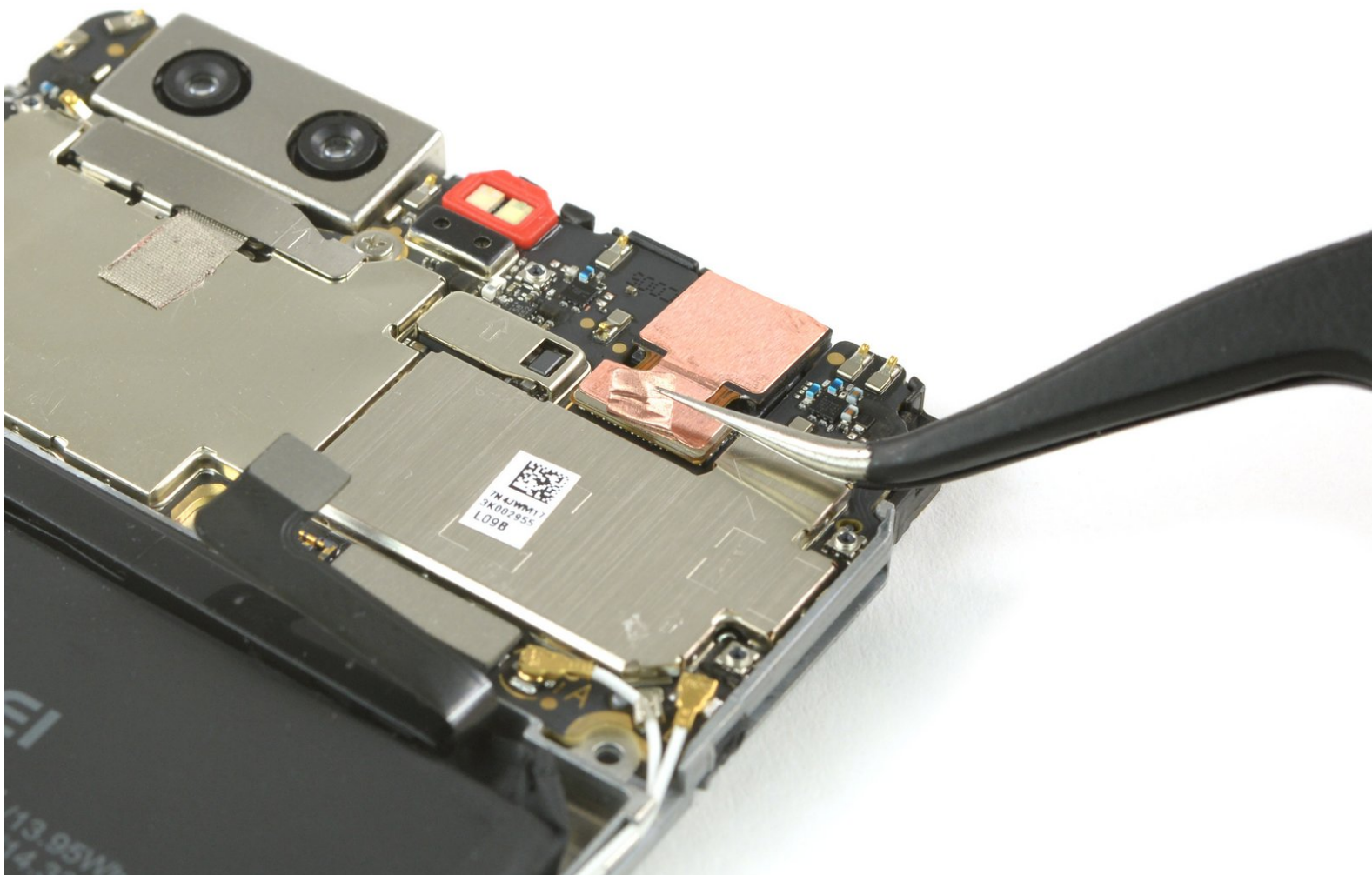




Huawei P10 Plus Front Facing Camera Replacement

This guide shows how to replace the front facing camera in your Huawei P10 Plus.

Written By: Dominik Schnabelrauch



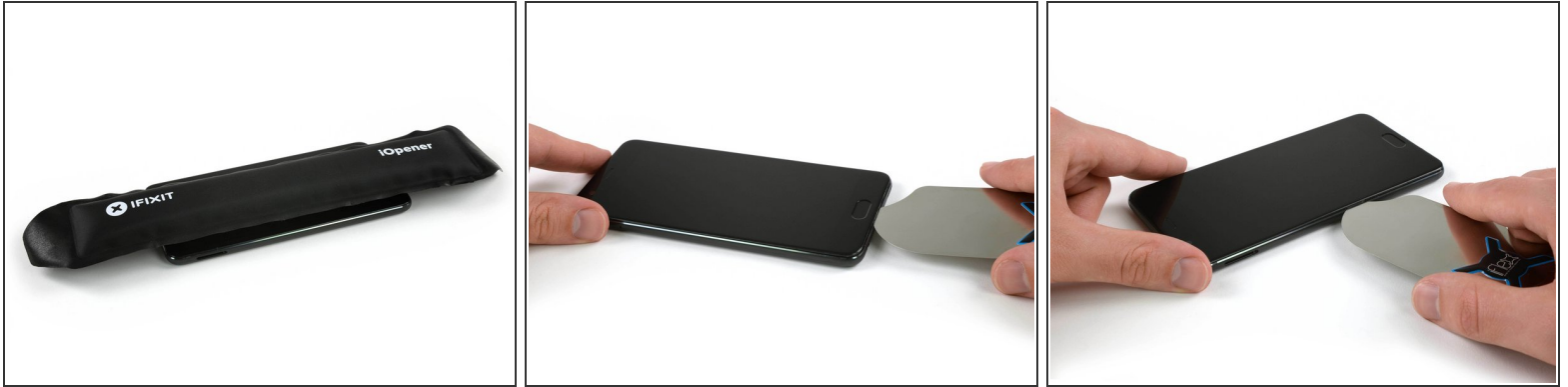
INTRODUCTION

In this guide we show you how to replace the front facing camera in your Huawei P10 Plus smartphone.

TOOLS:

- [iFlex Opening Tool](#) (1)
 - [iOpener](#) (1)
 - [SIM Card Eject Tool](#) (1)
 - [iSlack](#) (1)
 - [Tweezers](#) (1)
 - [Spudger](#) (1)
 - [Phillips #000 Screwdriver](#) (1)
-

Step 1 — Display



- [Use an iOpener](#) to loosen the adhesive beneath the display, focusing on the upper and lower part of the display.
- Use an opening pick, or iFlex, to separate the adhesive on all sides of the display.

⚠ To avoid damage to the display, do not push the tool too deeply into the phone.

Step 2



⚠ There is a thin display cable between the screen and phone, be very careful not to rip it when opening the device.

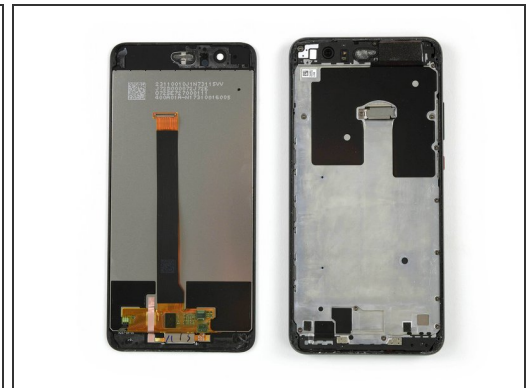
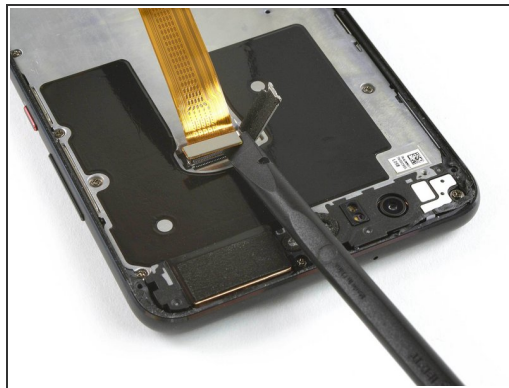
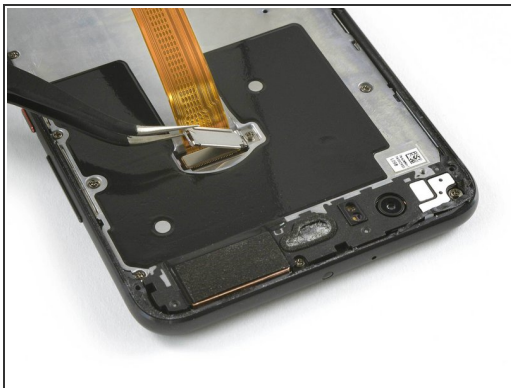
- Place a suction cup, or iSclack, on the upper portion of the phone and lift the display off the midframe.
- Don't remove the display, the cable is trapped under a bracket screwed to the phone. You can flip the display to lay it down without straining the cable, or simply hold it in the next steps.

Step 3 — Unfasten the screw



- Remove the 3.3 mm-long Phillips screw securing the display flex connector bracket.

Step 4



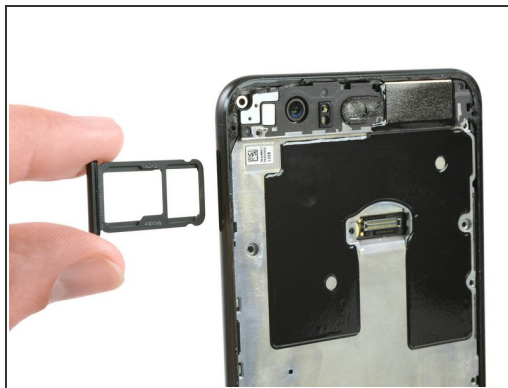
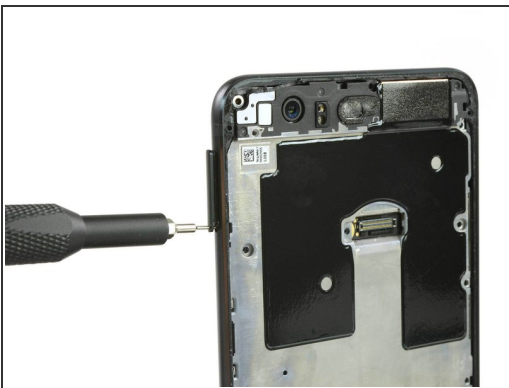
- Open the metal bracket that covers the display flex cable.
 - Use a spudger to disconnect the display flex cable.
 - Remove the display.
- ☑ When reassembling your phone replace old adhesive with [double-sided tape](#) or [pre-cut adhesive strips](#).

Step 5 — Midframe



- Remove the 13 Phillips #00 screws.
- Remove the metal shield which holds down the display flex connector.

Step 6



- Remove the SIM card tray.
- Use the pointed end of a spudger to pry out the mid frame until you can get a good grip.

Step 7



- Remove the mid frame.
- Disconnect the battery flex cable with a spudger.

Step 8 — Front Facing Camera



- Peel of the adhesive tape that connects the front facing camera to the mainboard.
- Use a spudger to disconnect the front camera flex cable.
- Remove the front camera.

To reassemble your device, follow these instructions in reverse order. When reassembling your phone apply new adhesive where it is necessary.