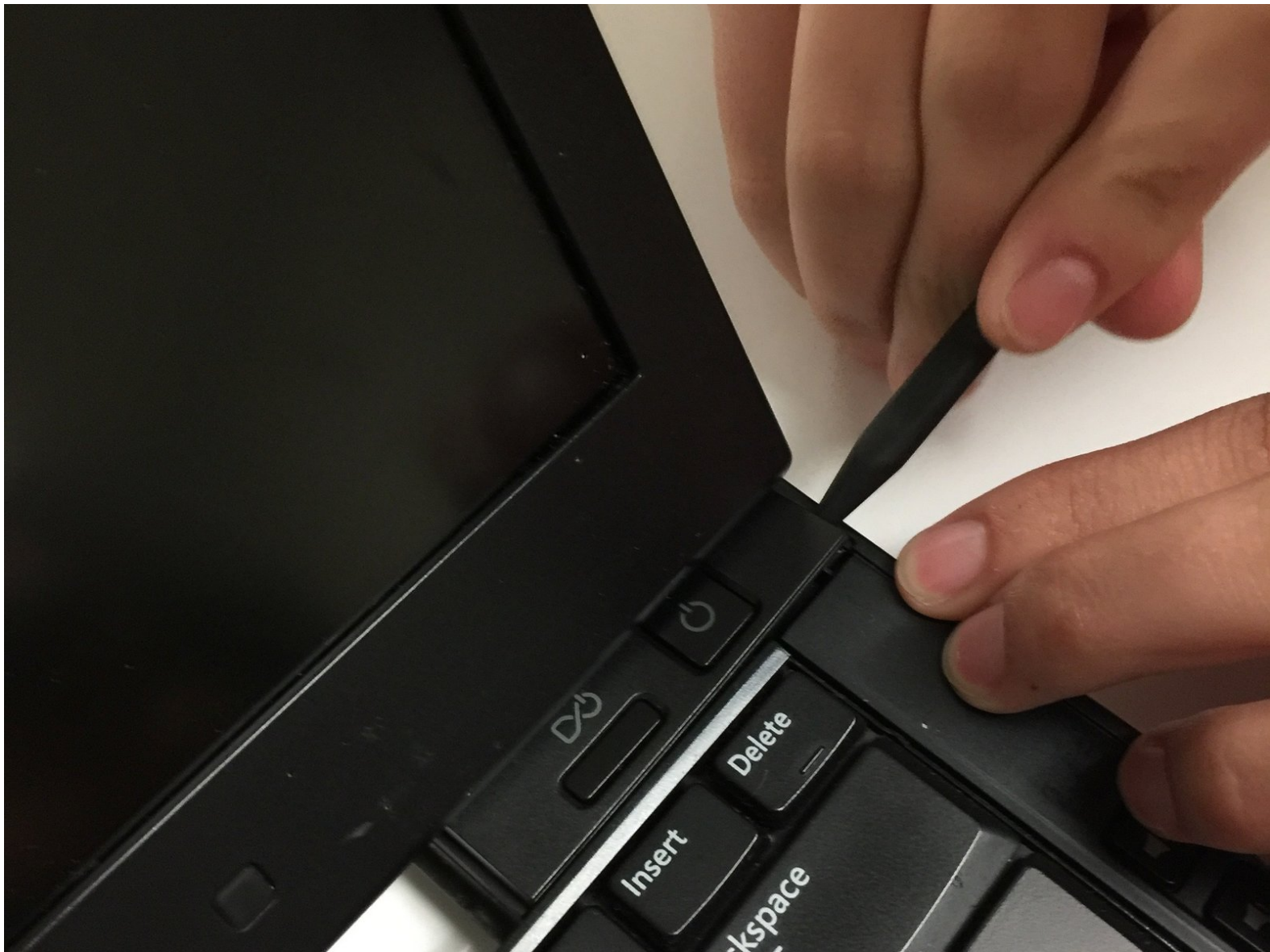




# Dell Latitude E4310 Keyboard Replacement

This guide will help replace the keyboard.

Written By: Laura Lujan



# INTRODUCTION

Use this guide to replace an unresponsive or sticky keyboard on your Dell Latitude E4310.



## TOOLS:

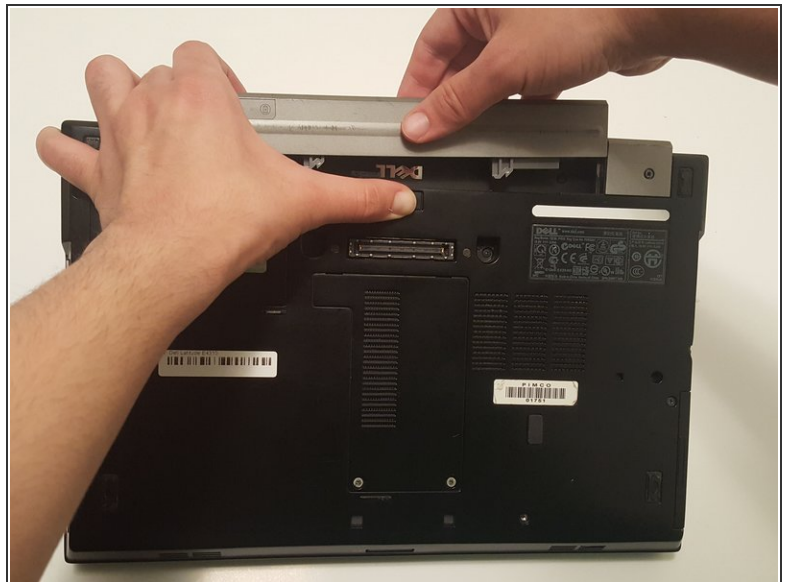
- [Phillips #1 Screwdriver](#) (1)
  - [Spudger](#) (1)
  - [Phillips #0 Screwdriver](#) (1)
-

## Step 1 — Battery



- Power down the laptop and remove all power cords.

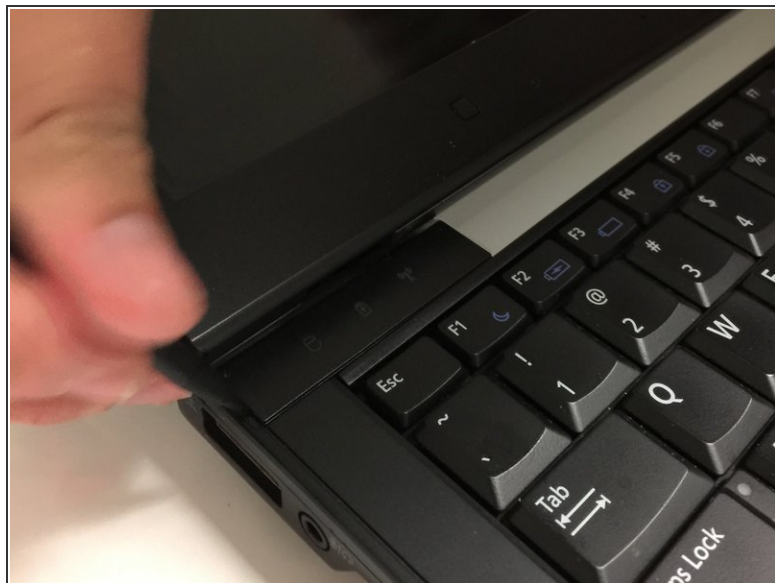
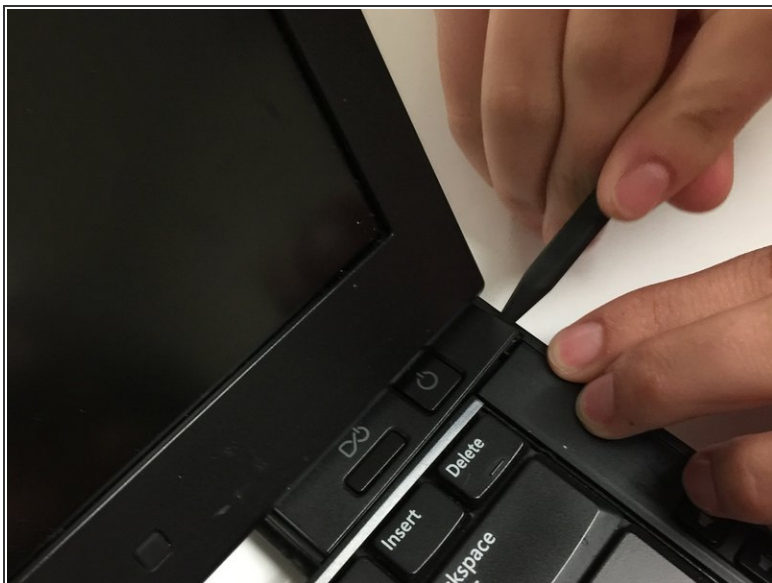
## Step 2



- Push in the battery release button with your thumb.
- Pull up on the battery to remove.

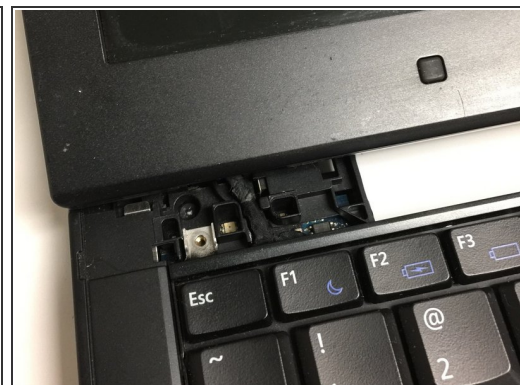
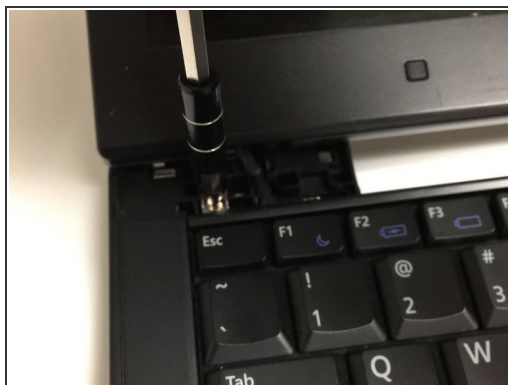
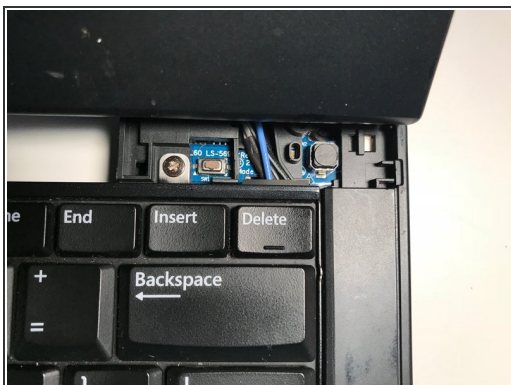


## Step 3 — Keyboard



- Insert the pointy end of the spudger underneath the power button panel and pry upwards to pop off.
- Do the same steps for the other side.

## Step 4



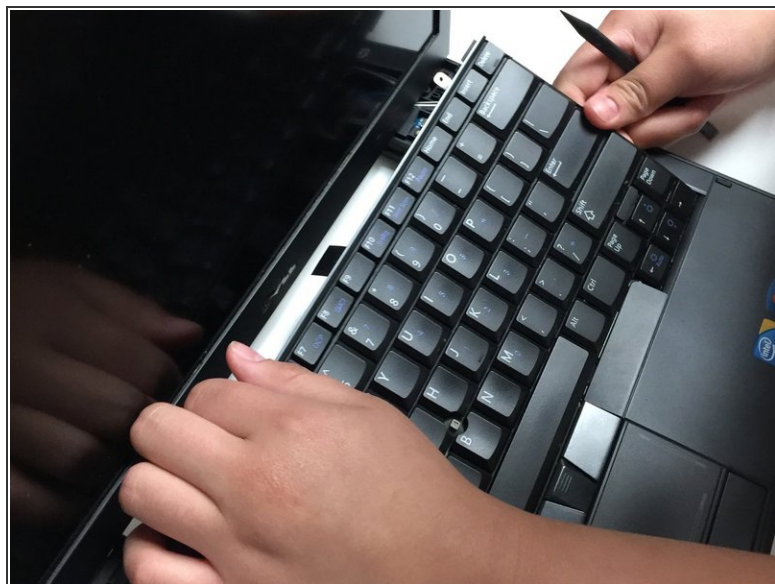
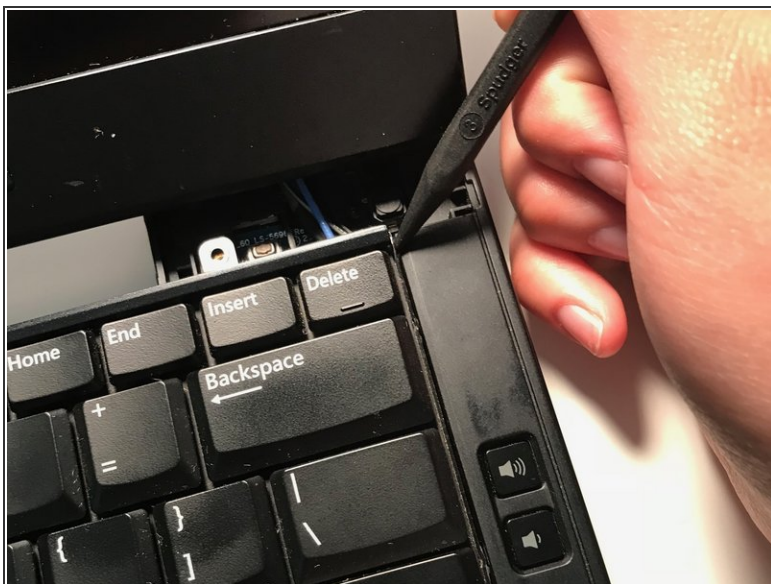
- Remove the two Phillips #0 screws.

## Step 5



- Flip the laptop over and remove the two Phillips #0 screws.

## Step 6



- Insert the pointy end of the spudger underneath the edge of the keyboard and pry upwards to lift up.
- Once lifted, grab the keyboard and pull out to remove.

To reassemble your device, follow these instructions in reverse order.