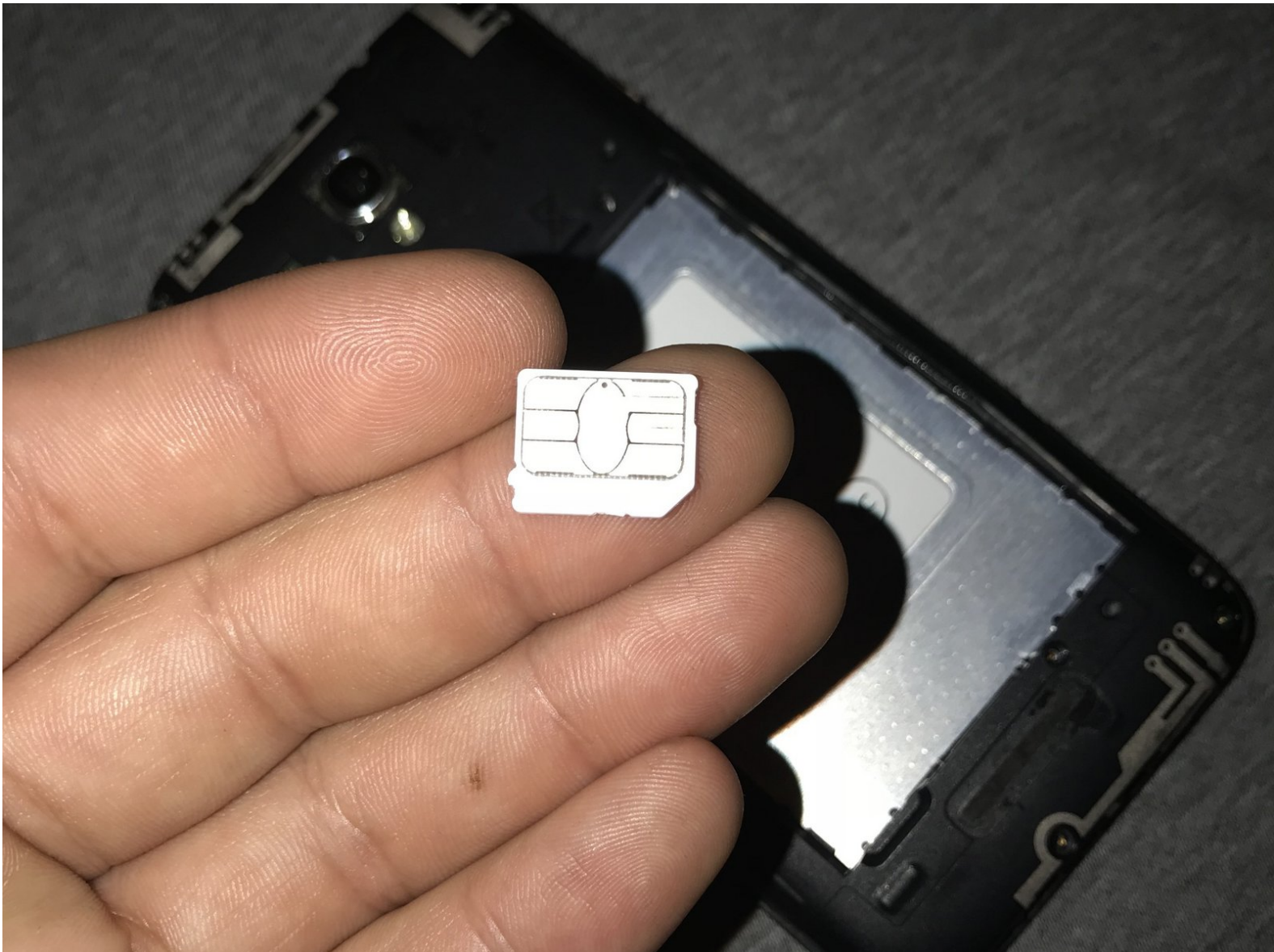




# Alcatel OneTouch Elevate SIM Card Replacement

Expand your memory and increase your device's speed by replacing the SIM card.

Written By: Jorge



# INTRODUCTION

This guide will walk you through the steps on changing your phones SIM card with guided pictures to help at every stage



## TOOLS:

- [Fingers](#) (1)

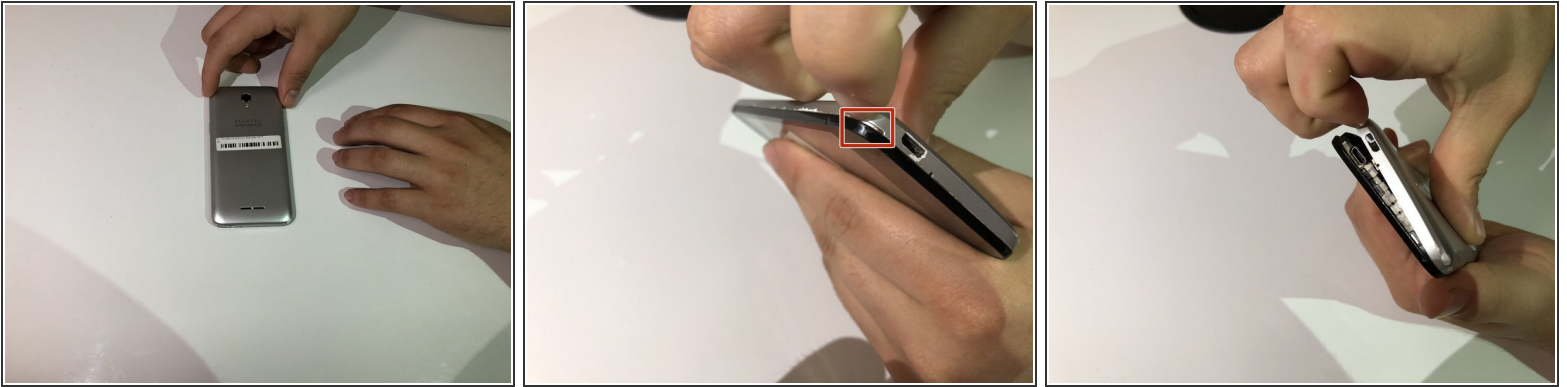


## PARTS:

- [Micro SD card](#) (1)

*Phone requires a MicroSIM*

## Step 1 — Battery



- Locate the small indent on the lower left corner.
- Use your fingers or a small plastic opening tool to lift the back cover off.

## Step 2



- Locate the indent between the battery and your phone.
- Use your finger or a small plastic opening tool to lift the battery free.



### Step 3 — SIM card



- Locate the SIM card slot at the top left of the phone.
- If an SIM card is not present, you can skip to step 4

### Step 4



- The SIM card will have an indent at the top, use this to carefully pull the card from the slot.

## Step 5



- Grab the new SIM card making sure not to touch the metallic area.
- With the metallic patch facing down, insert the card into the slot.

To reassemble your device, follow these instructions in reverse order.