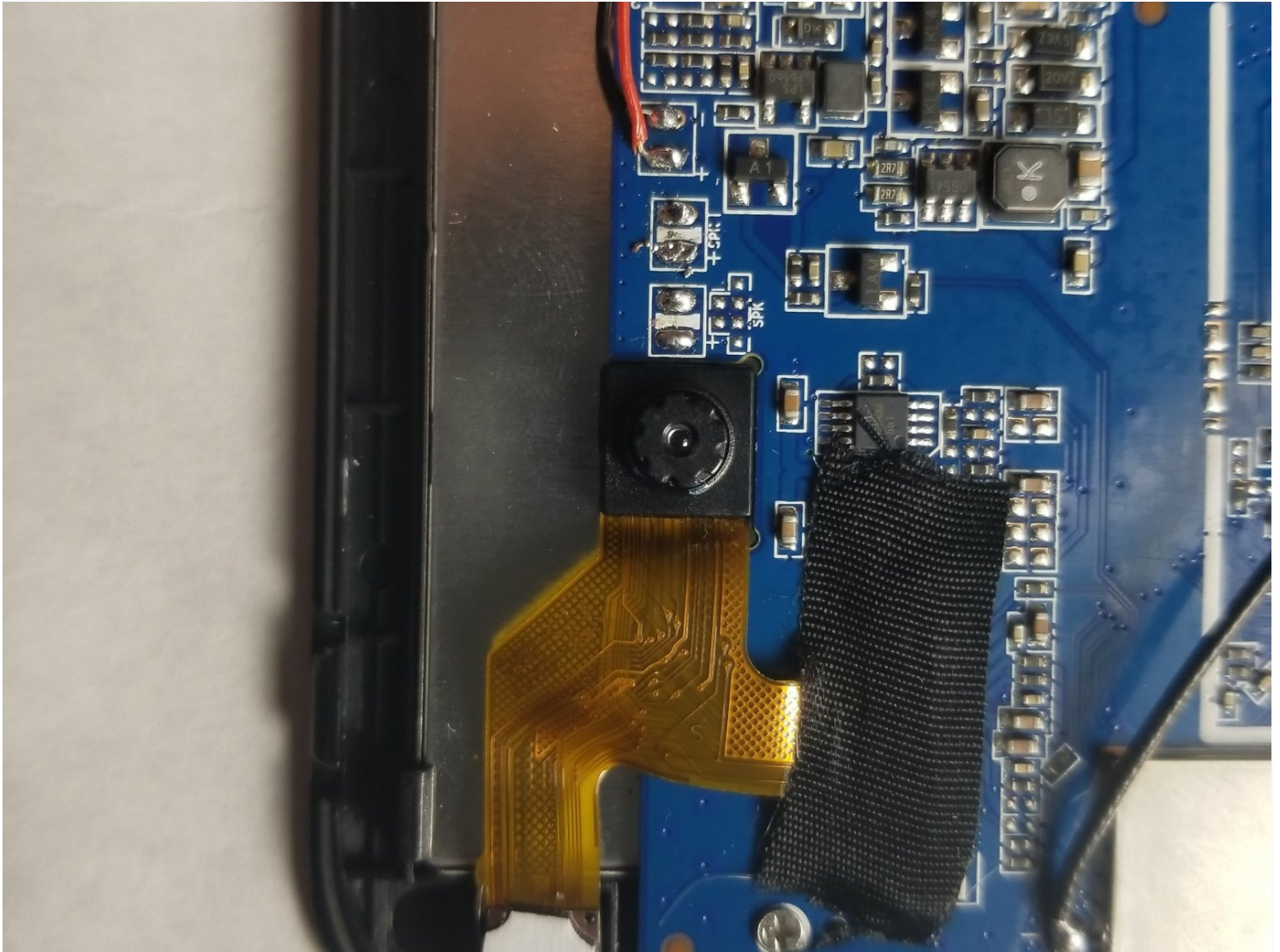




Dragon Touch A1x Plus Cameras Replacement

This guide walks through the process of...

Written By: Josh Null



INTRODUCTION

This guide walks through the process of replacing the camera. For safety reasons, you must first follow instructions to remove the battery. After the battery is disconnected, you can follow the rest of the directions to safely remove the camera.

TOOLS:

[iFixit Opening Tool](#) (1)

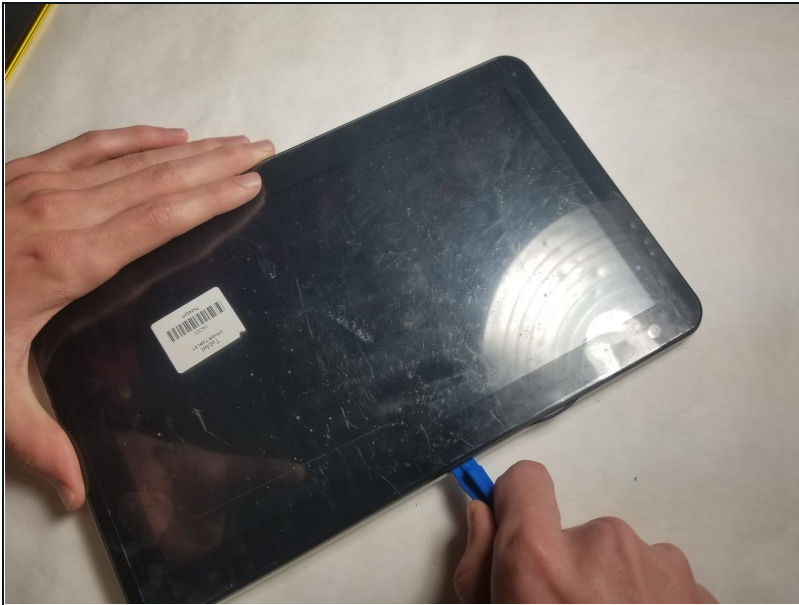
[Plastic Cards](#) (1)

[Hair Dryer](#) (1)

[Soldering Iron](#) (1)

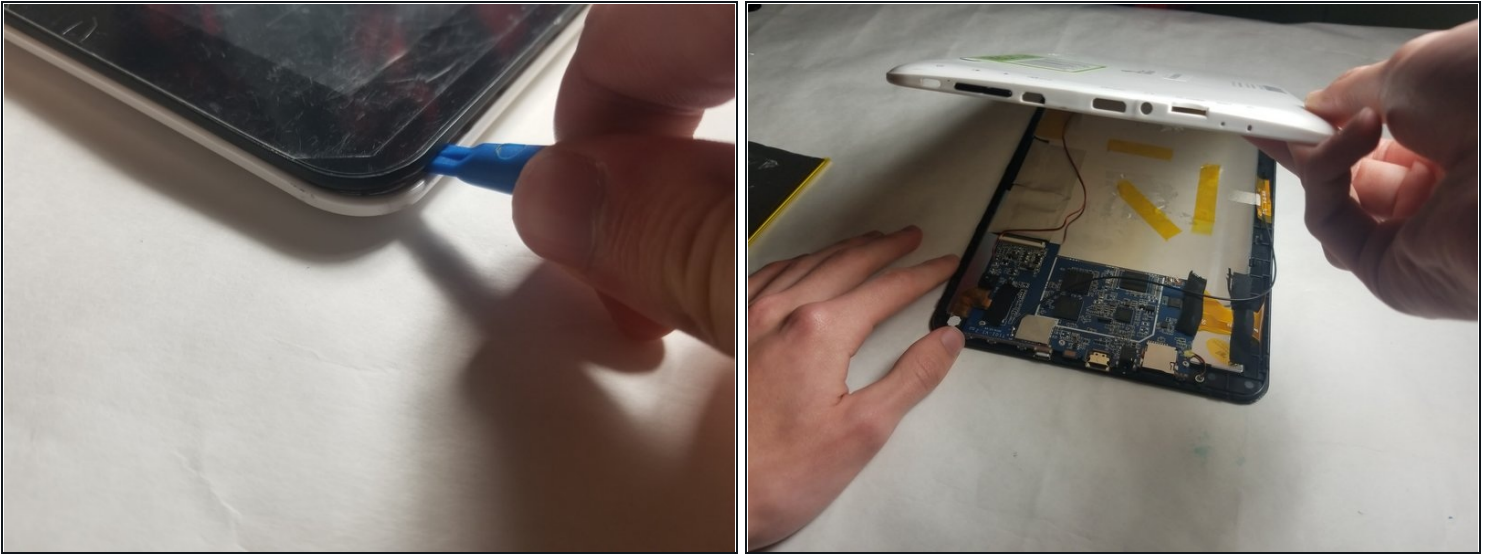
[Metal Spudger](#) (1)

Step 1 — Battery



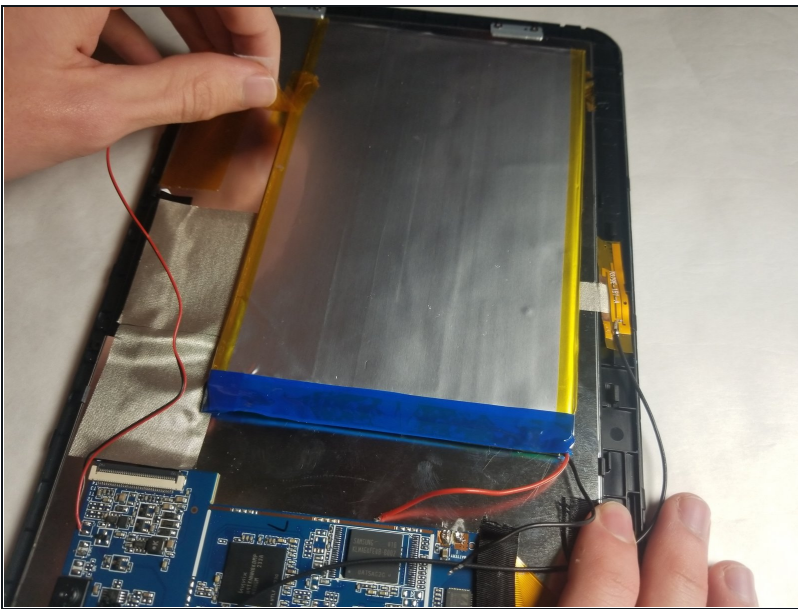
- Insert the plastic opening tool between the white back cover and black front over.

Step 2



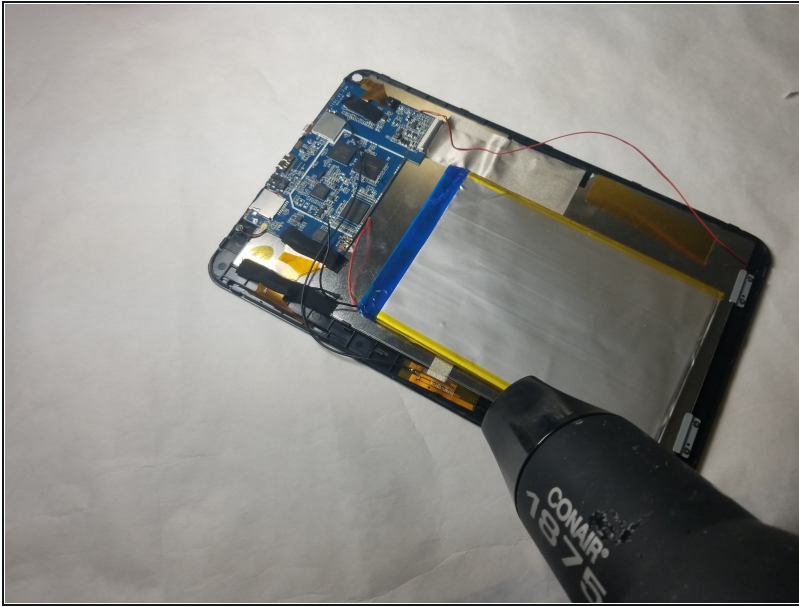
- Slide the plastic opening tool along the edge of the device until back cover is detached and remove the cover.
- ① You may need to pry the back cover off using the opening tool while moving it along the edge.

Step 3



- Remove the yellow tape holding the battery to the device using your fingers or plastic opening tool if necessary.

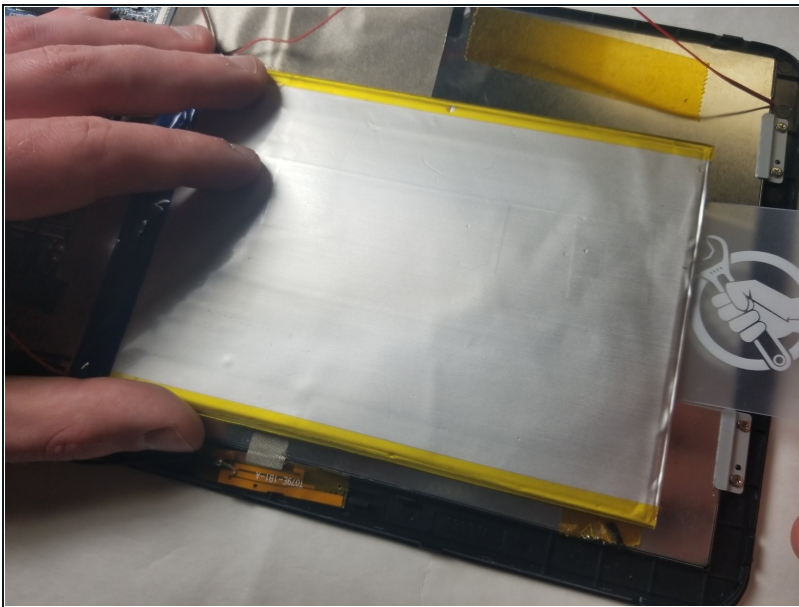
Step 4



- Use the hair dryer to melt the glue holding the battery to the device.

⚠ Be careful not to overheat the battery as it could cause the battery to combust.

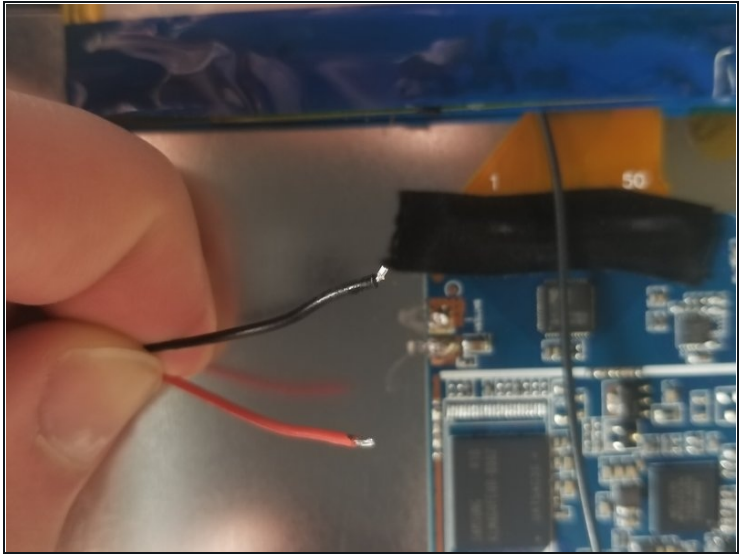
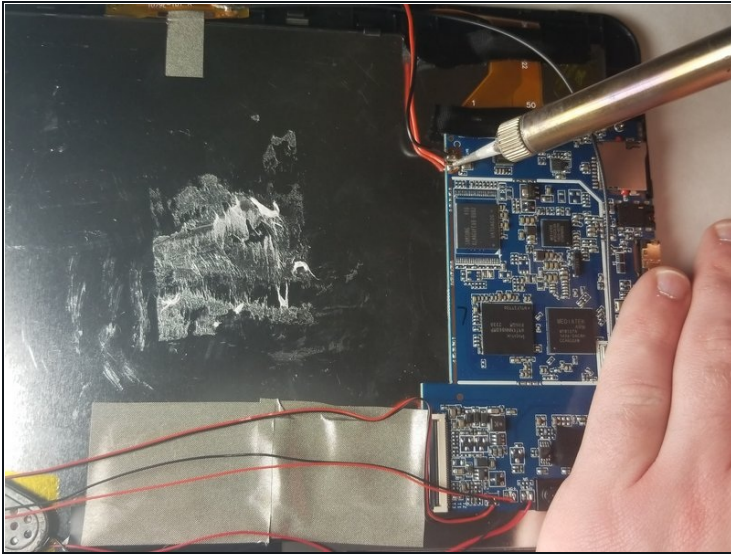
Step 5



- Insert the [plastic card](#) under the battery and use it to remove the battery from the device.

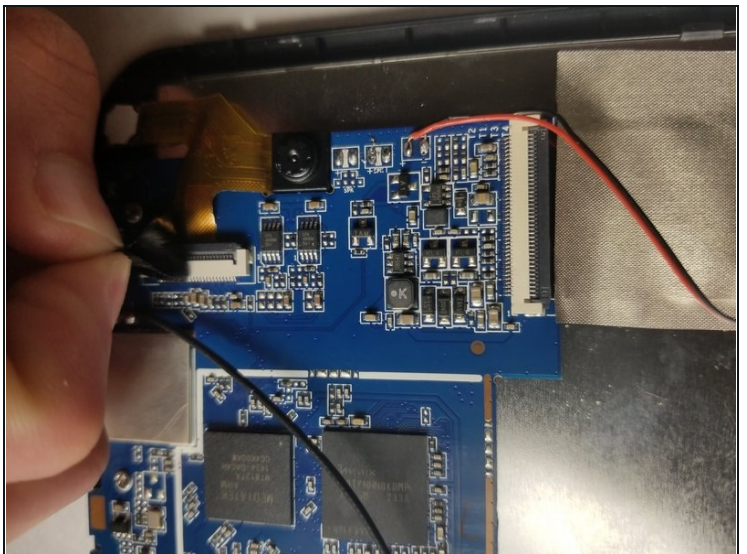
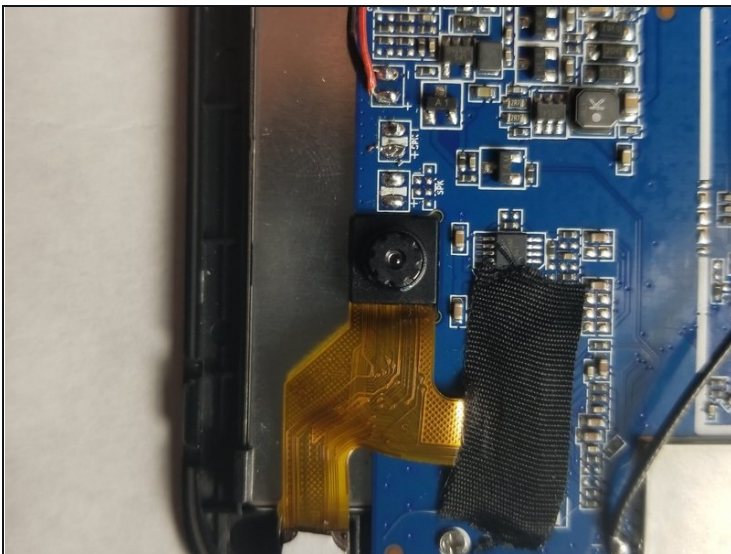
⚠ Be careful not to deform the battery.

Step 6



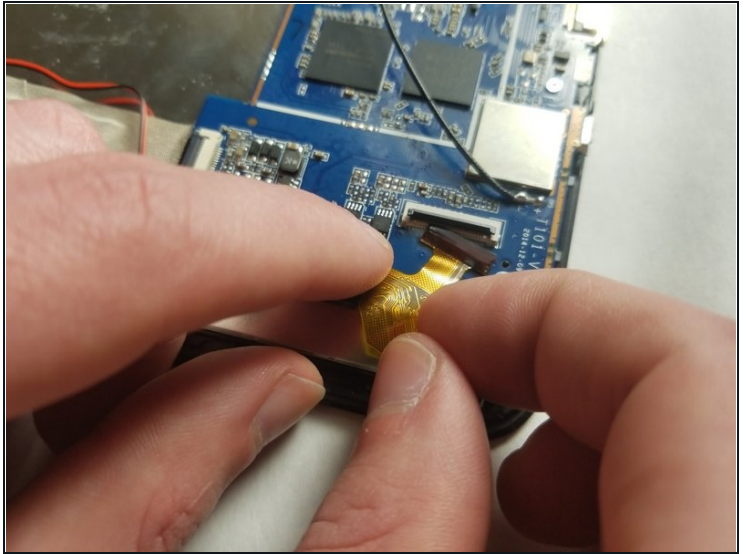
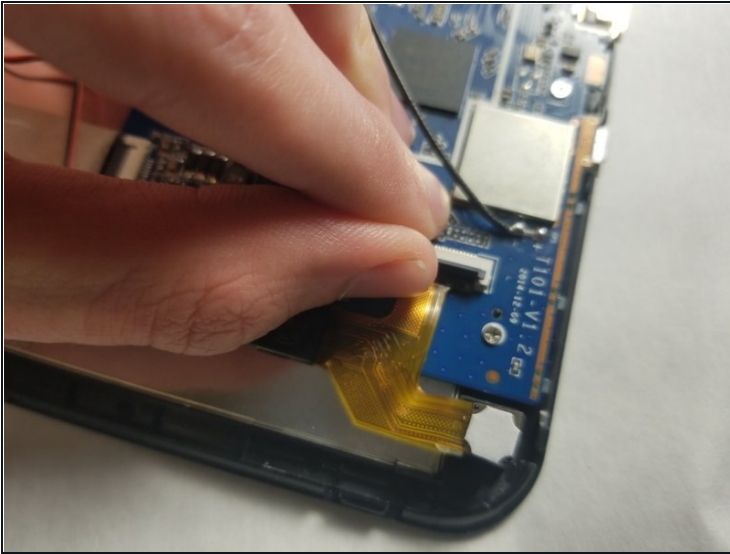
- [Desolder](#) the red and black wires connecting the battery to the motherboard and remove the battery.

Step 7 — Cameras



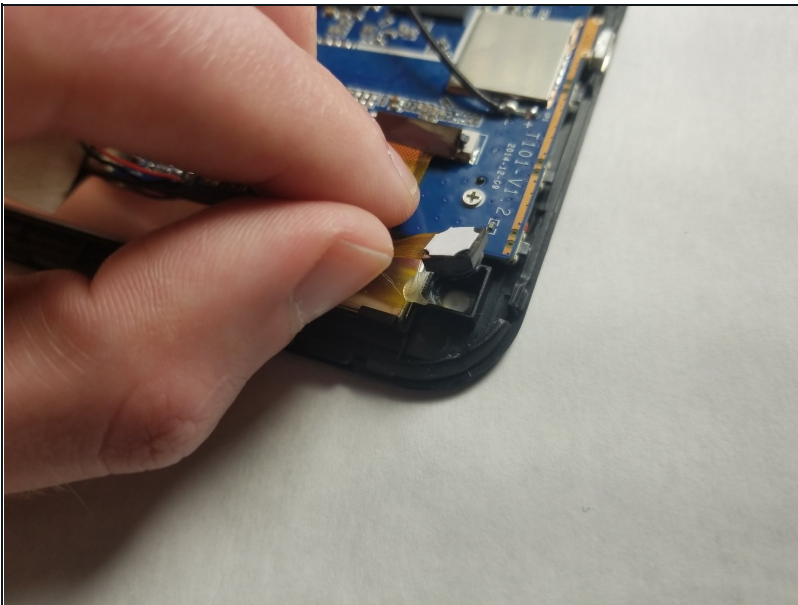
- Remove black tape holding the cameras to the motherboard.

Step 8



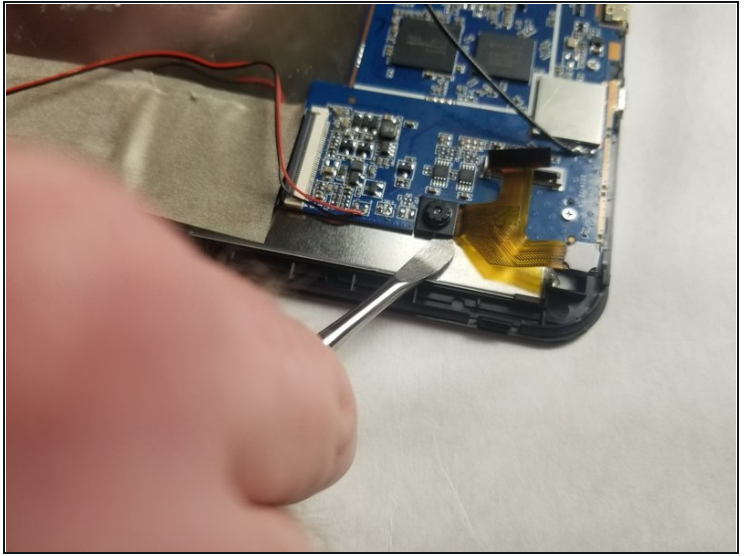
- Use your fingernail to flip up the small locking flap on the ZIF connector.
- Pull the ribbon cable from the ZIF connector.

Step 9



- Remove the front camera from the device using your fingers.

Step 10



- Melt the glue holding the rear camera in place using a hair dryer.
 - Insert the metal spludger under the rear camera and pry it free from the device.
-

To reassemble your device, follow these instructions in reverse order.