



MSI GE62 Apache Pro 004 Battery Replacement

This guide will help teach a user how to replace the Battery in the MSI Apache Pro 004 device

Written By: Arian Arana



INTRODUCTION

This guide will show a user how to replace the back cover on the MSI Apache Pro 004 laptop.



TOOLS:

- [Phillips #00 Screwdriver](#) (1)



PARTS:

- [MSI BTY-M6H Replacement Battery](#) (1)

Step 1 — Battery



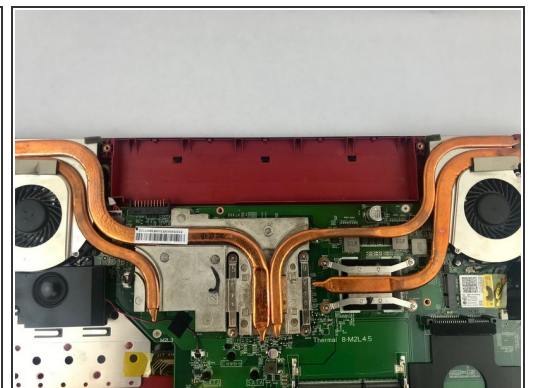
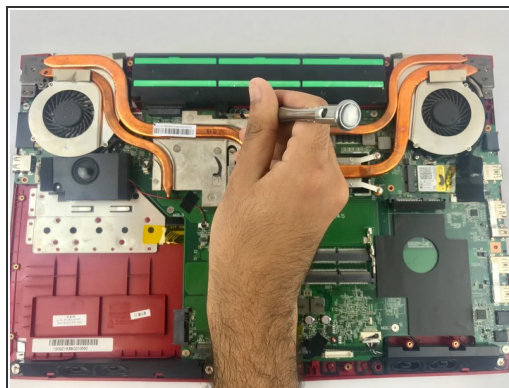
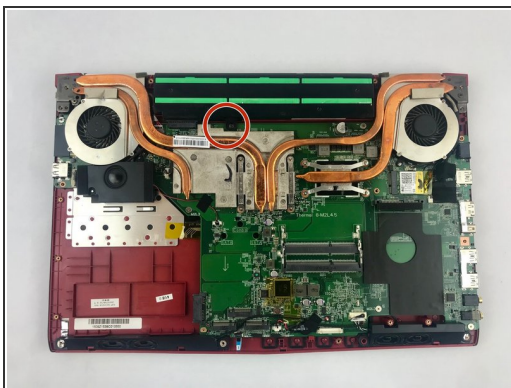
- Start with the bottom of the laptop facing up.

Step 2



- Remove the 15 screws from the bottom of the laptop with a PH1 screwdriver.
- Remove the bottom plate
- ⓘ Keep track of all the screws and which slot they came from, as they slightly differ. We recommend this system: lay out on a piece of paper and pretending the paper is the device. Place the screws on the paper approximately where they would go

Step 3



- Remove the screw holding down the battery with a PH1 screwdriver.
- Pull out the battery.

To reassemble your device, follow these instructions in reverse order.