



# HP Elitebook 820 G1 Monitor Display Replacement

This guide instructs on how to replace a monitor display.

Written By: Alberto Carlos Perez



---

# INTRODUCTION

Displays can get easily damaged either with time, or with any liquids or impacts.

---

## TOOLS:

- [iFixit Opening Tools](#) (1)
  - [Phillips #00 Screwdriver](#) (1)
  - [T7 Torx Screwdriver](#) (1)
  - [Phillips #0 Screwdriver](#) (1)
-

## Step 1 — Battery



⚠ Ensure the laptop is completely powered off and power adapter is unplugged before removing the battery.

- Turn over laptop so that the bottom is showing.
- Unlock the latch.

## Step 2



- Remove the back cover and you will then be able to see the battery.

### Step 3



- Unlatch the two latches securing the battery in the case.

### Step 4



- Use a plastic opening tool to lift and remove the battery.

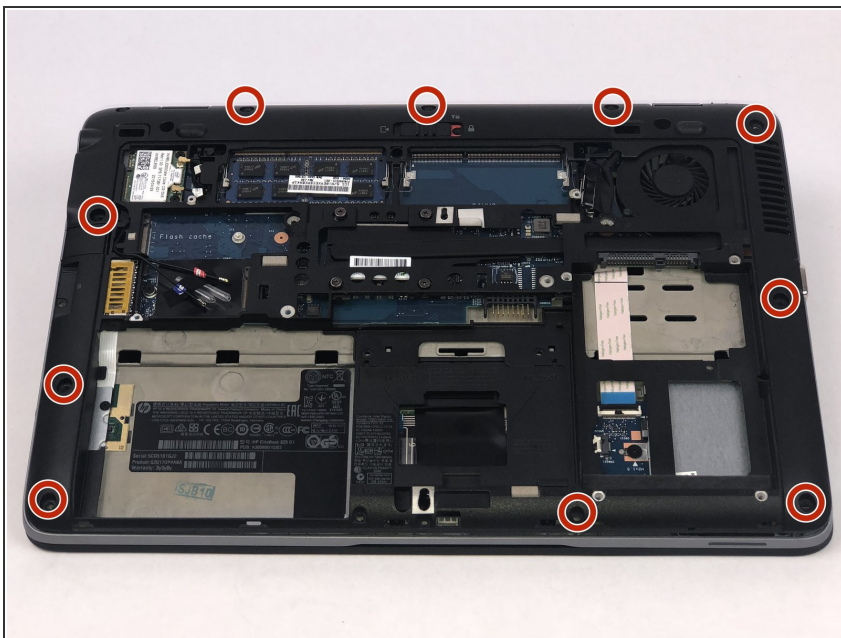


## Step 5 — Fan



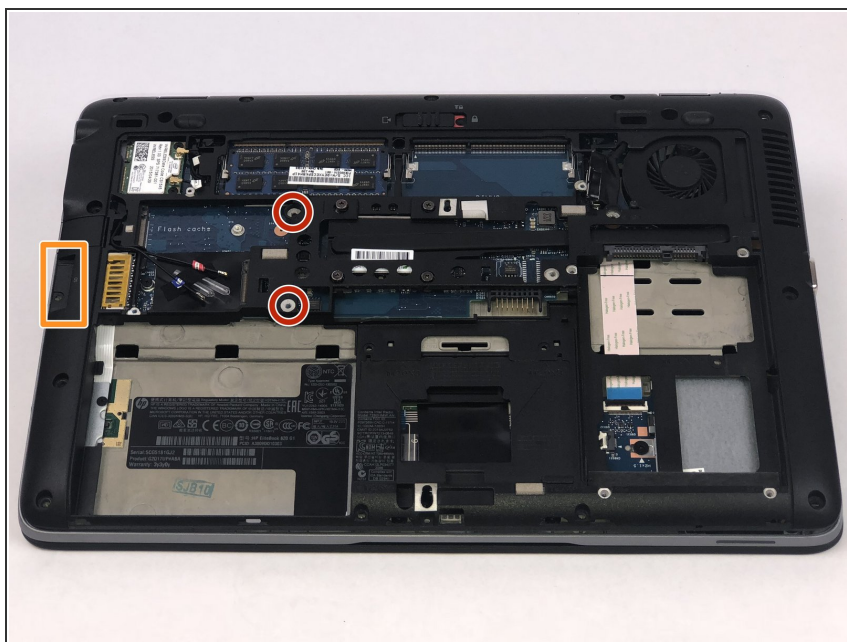
- Remove the hard drive by unscrewing the four 8mm screws with the T7 philip's head.

## Step 6



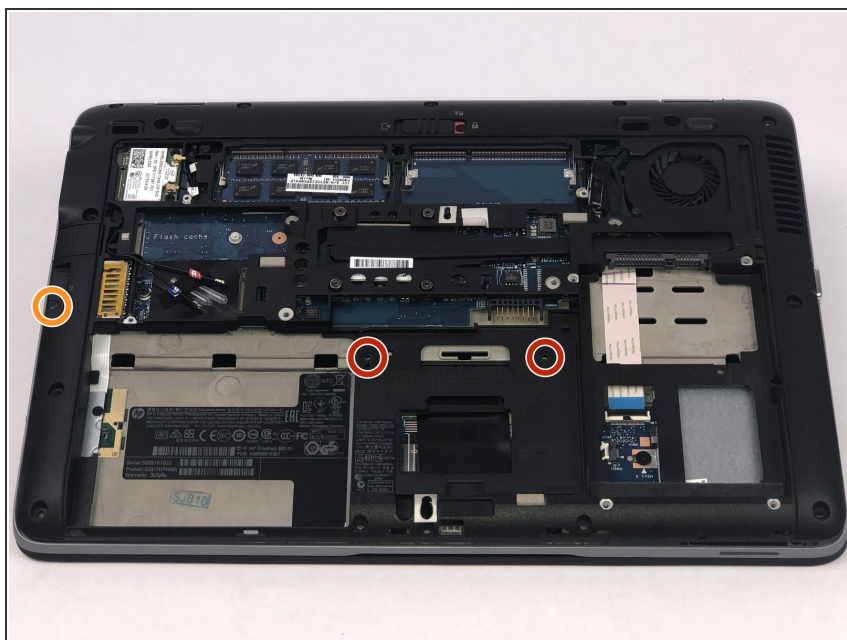
- Pry off ten rubber paddings on the outer edge of the laptop to reveal the torx screws.
- Unscrew the ten 8mm torx screws that are under the rubber paddings using the T7 tip torx screwdriver.

## Step 7



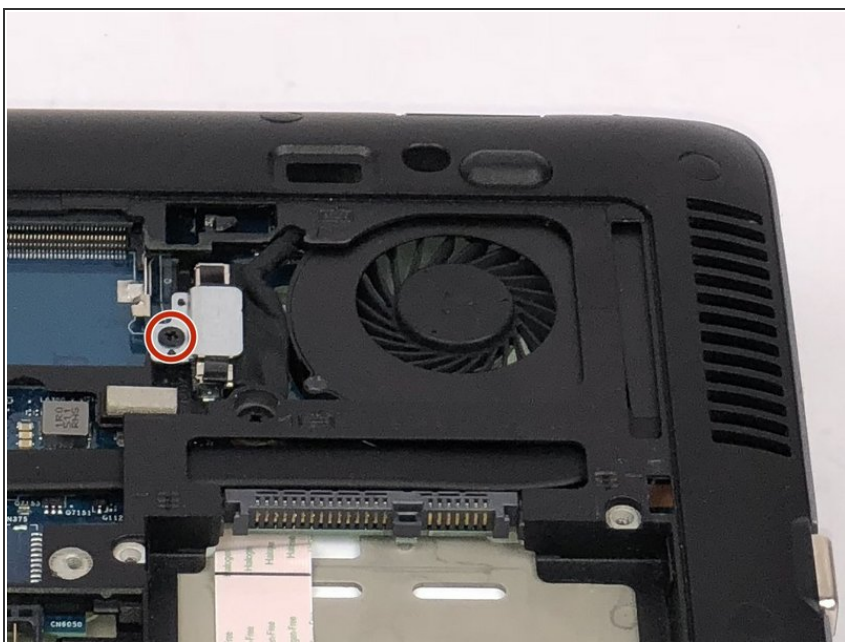
- Remove the two 4mm screws indicated by the M2.5X4 using the J00 tip screwdriver.
- Remove SD card cap by just sliding out to reveal one screw.

## Step 8



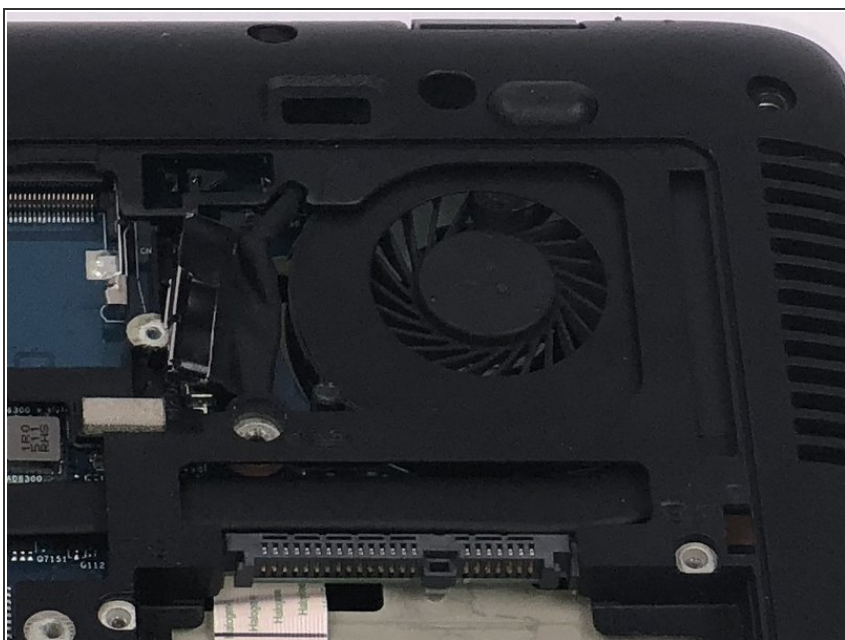
- Remove the two 3mm screws indicated by the M2.03 using the J00 tip screwdriver.
- Remove the 4mm SD card screw using the J00 tip.

## Step 9



- Remove the one 4mm fan screw using the J00 tip screwdriver.
- Remove screw and metal plate to expose ribbon cable connector.

## Step 10



- Use an opening tool to pry up the ribbon connector to disconnect.



## Step 11



- Turn laptop over back to normal position as shown in the image.
- Use opening tools to pry up keyboard.
- ⓘ When prying up keyboard, be sure to start near any corner of the keyboard.
- ⚠ There are two ribbon cables that must be disconnected before fully removing keyboard.

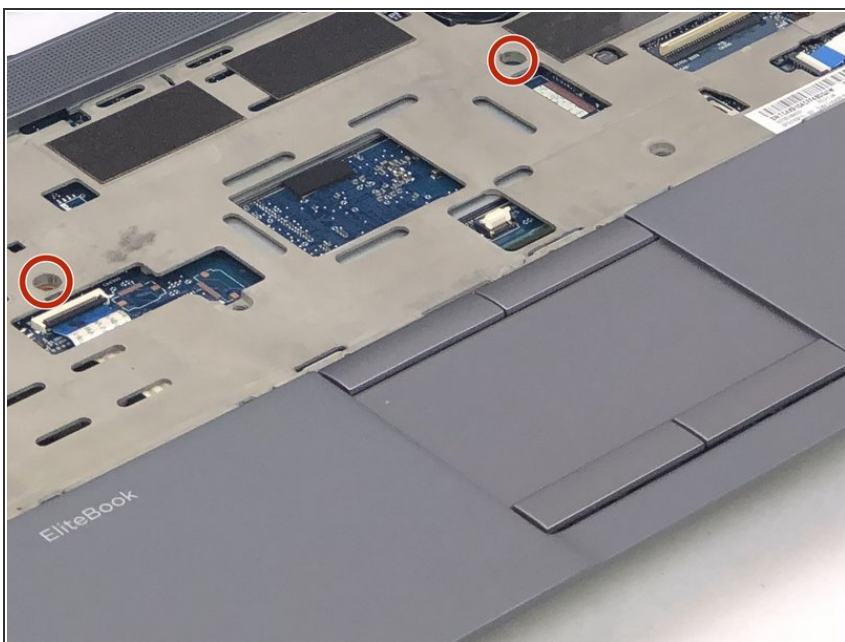
## Step 12



- Carefully lift keyboard on one side to expose the two ribbon cables.
- Use an opening tool to lift up the locking clip and unplug the two ribbon cables.

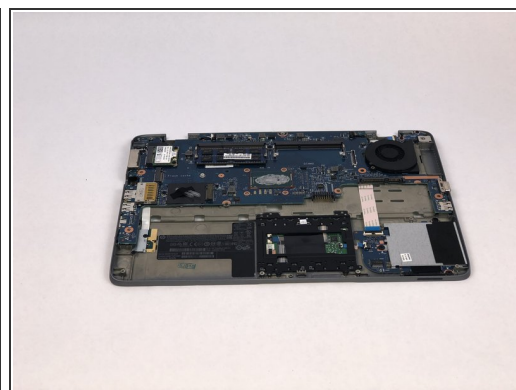


## Step 13



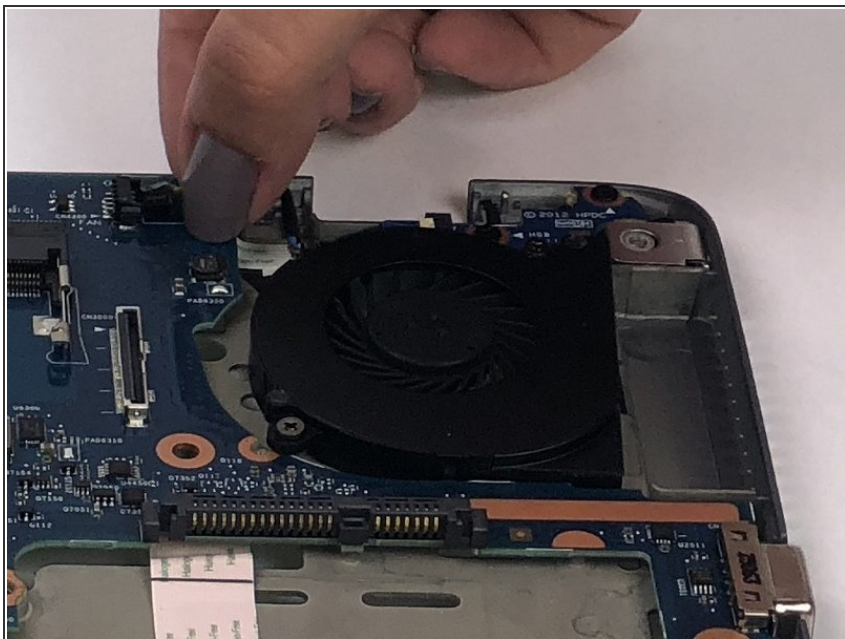
- Remove the two 4mm screws centered notated by the keyboard logo using the J00 tip.

## Step 14



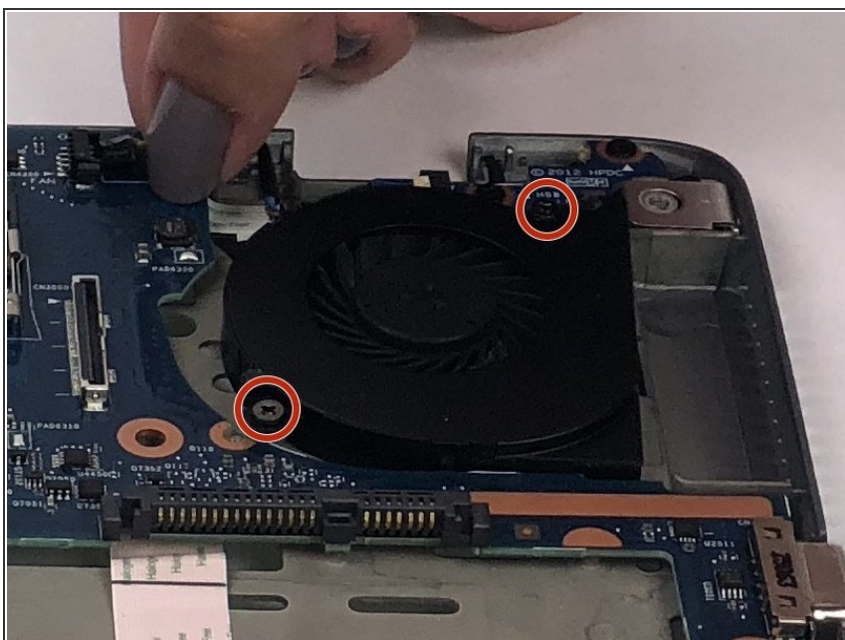
- Once keyboard has been fully removed, the system case containing the motherboard can be lifted out easily.
- The display is connected to the shell of the laptop.

## Step 15



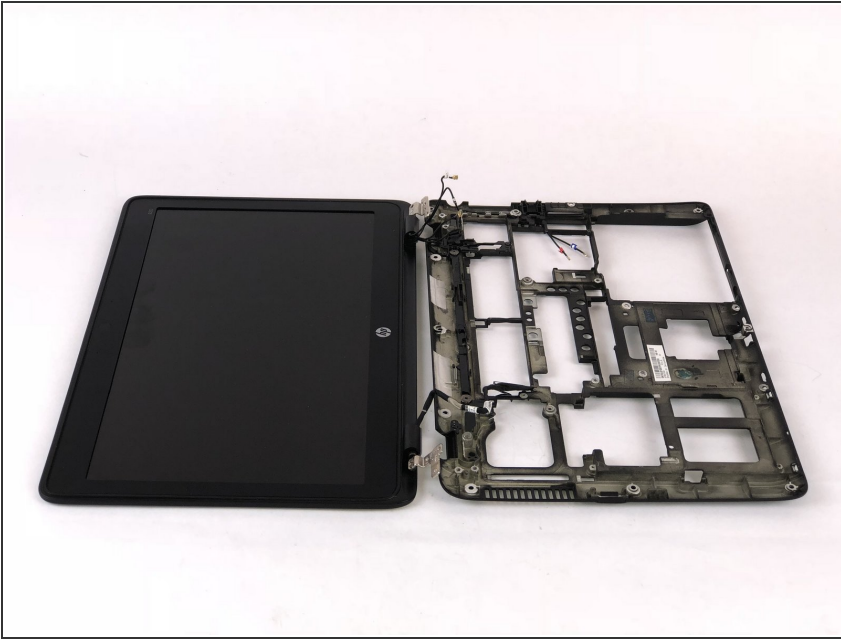
- Unplug fan cable by pulling away from its connector.

## Step 16



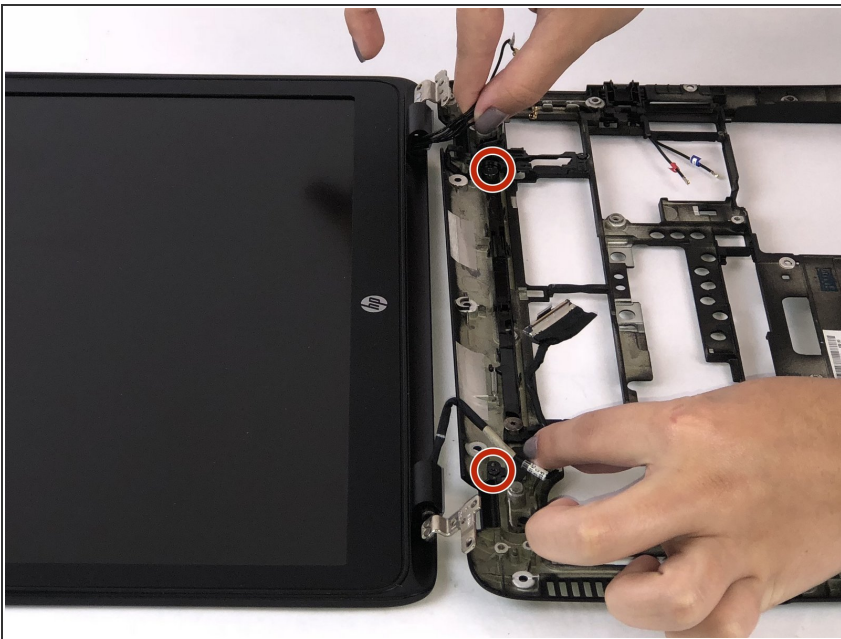
- Unscrew the two 6mm fan screws using the J00 tip.
- ⓘ Fan screws are encased in springs and cannot be removed.

## Step 17 — Monitor display



- Retrieve the monitor display connected to the plastic chassis.

## Step 18



- Unscrew the two 4mm hinge screws using the Philips 00 tip screwdriver.

## Step 19



- Unhinge the monitor display from the chassis.

To reassemble your device, follow these instructions in reverse order.