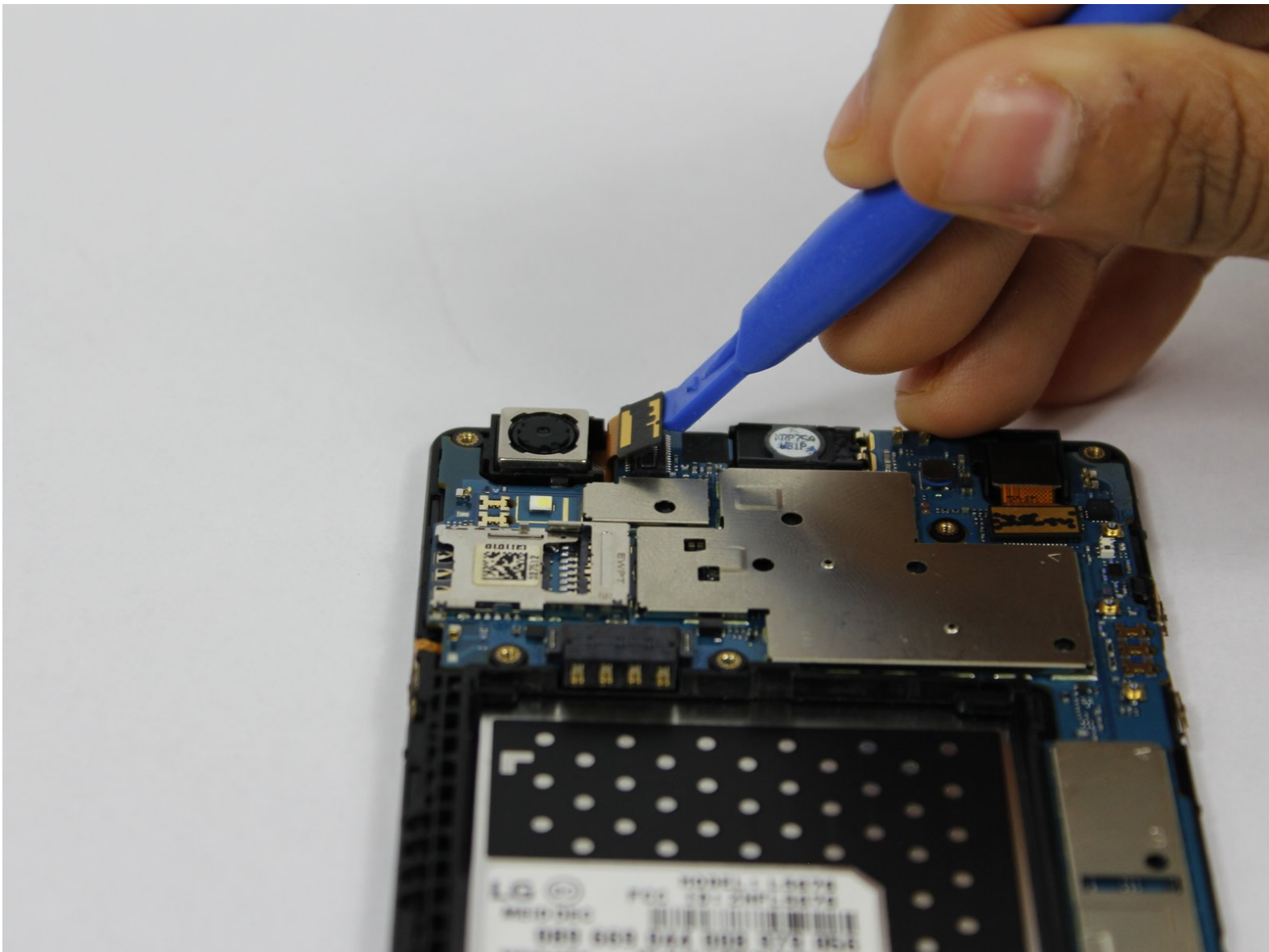




# LG Tribute HD Rear Camera Replacement

A guide for replacing the rear camera of a LG Tribute HD LS676 due to damaged rear camera causing blurry photos, error messages or not able to take photos

Written By: Aalia Mohammed



---

## INTRODUCTION

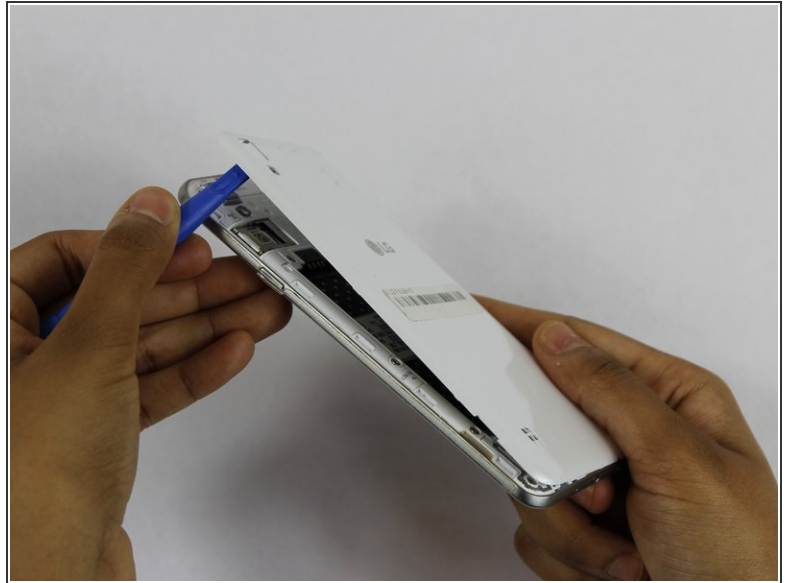
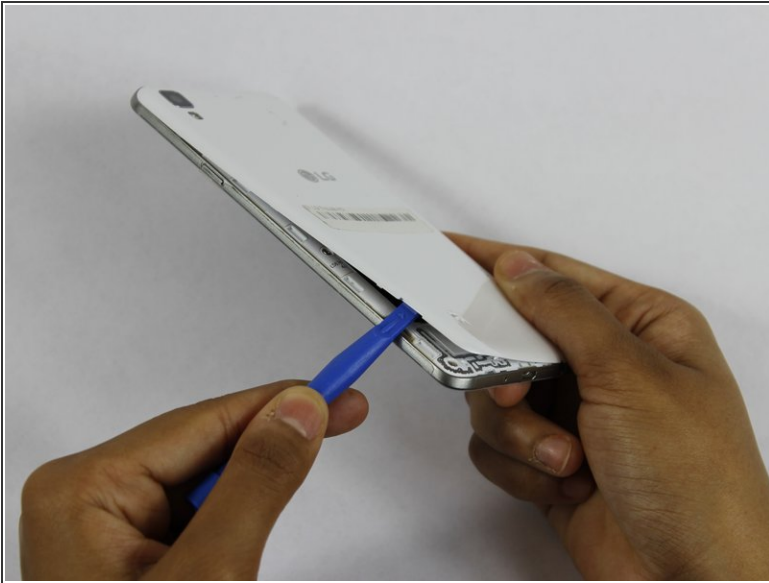
This guide will teach you how to properly repair or replace the rear camera in the LG Tribute HD LS676. The rear camera may need cleaning if the lens has been damaged by water, dirt or sand. There may also be connectivity issues to the motherboard which will require disconnecting and reconnecting the ribbon cable from the camera to the motherboard. However, if the rear lens is broken or damaged causing the camera not to turn on, then it has to be replaced.

---

### TOOLS:

- [iFixit Opening Tools](#) (1)
  - [JIS #00 Screwdriver](#) (1)
-

## Step 1 — Battery and SD Card



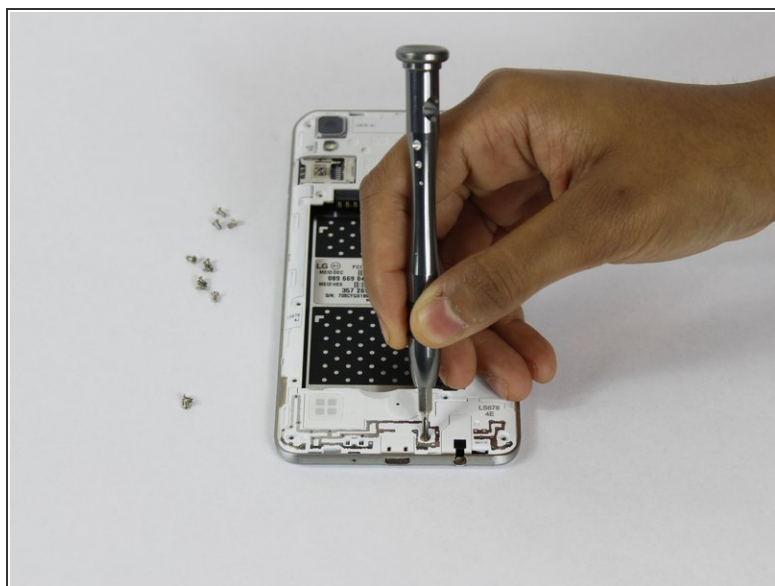
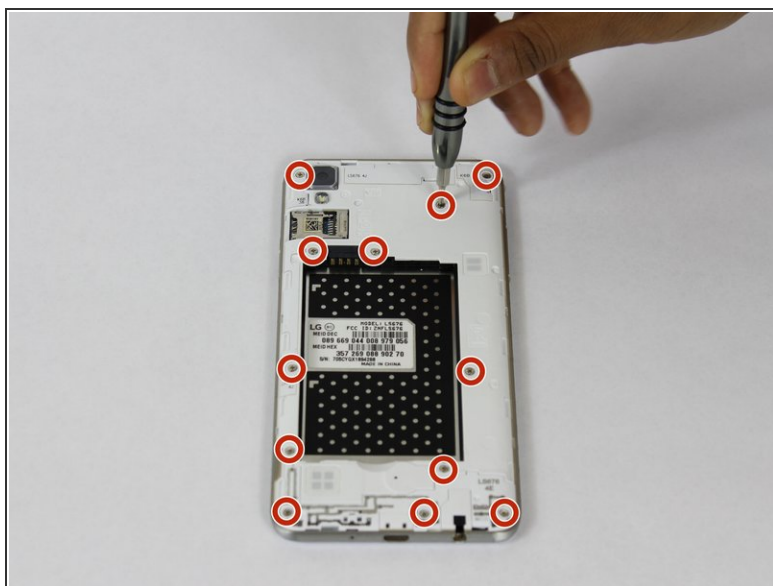
- Insert a fingernail, or plastic opening tool, into the cutout on the back cover and pry outward to remove.

## Step 2



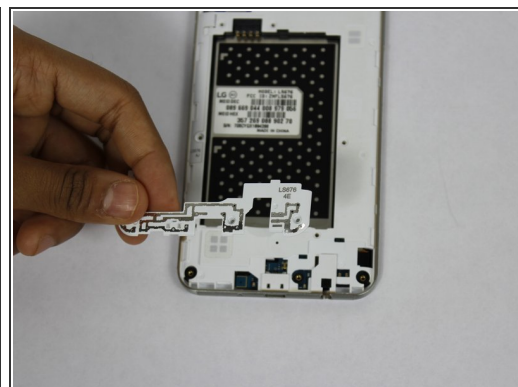
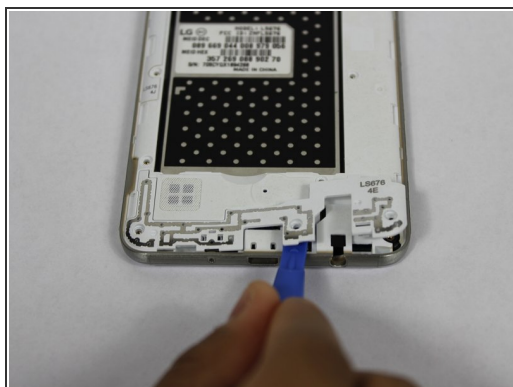
- Pull the battery out of the phone.
- Remove the SD Card by sliding the card out as shown.

## Step 3 — Rear Camera



- Remove the twelve 2mm JIS #00 screws from the mid-frame.

## Step 4



- Using a plastic opening tool, remove the antenna extender from the mid-frame.

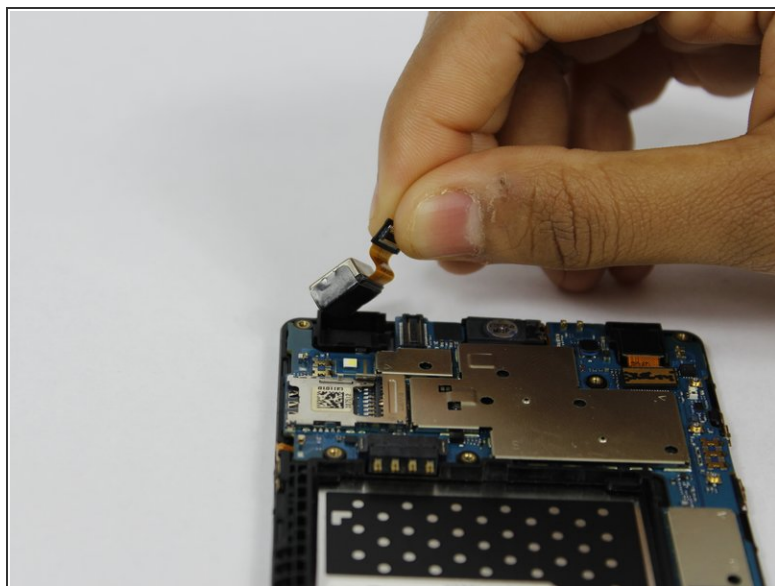
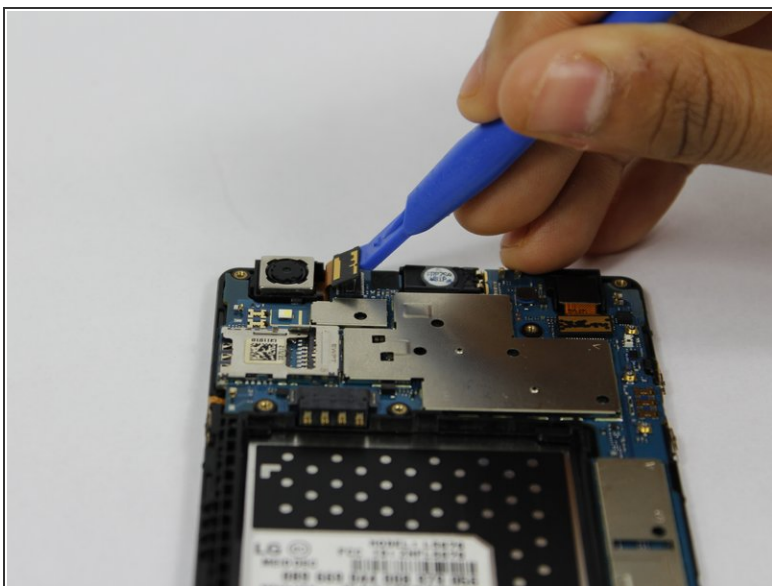


## Step 5



- Using your fingers, remove the mid-frame.

## Step 6



- Use a plastic opening tool to disconnect the rear camera and pull from the phone.

To reassemble your device, follow these instructions in reverse order.