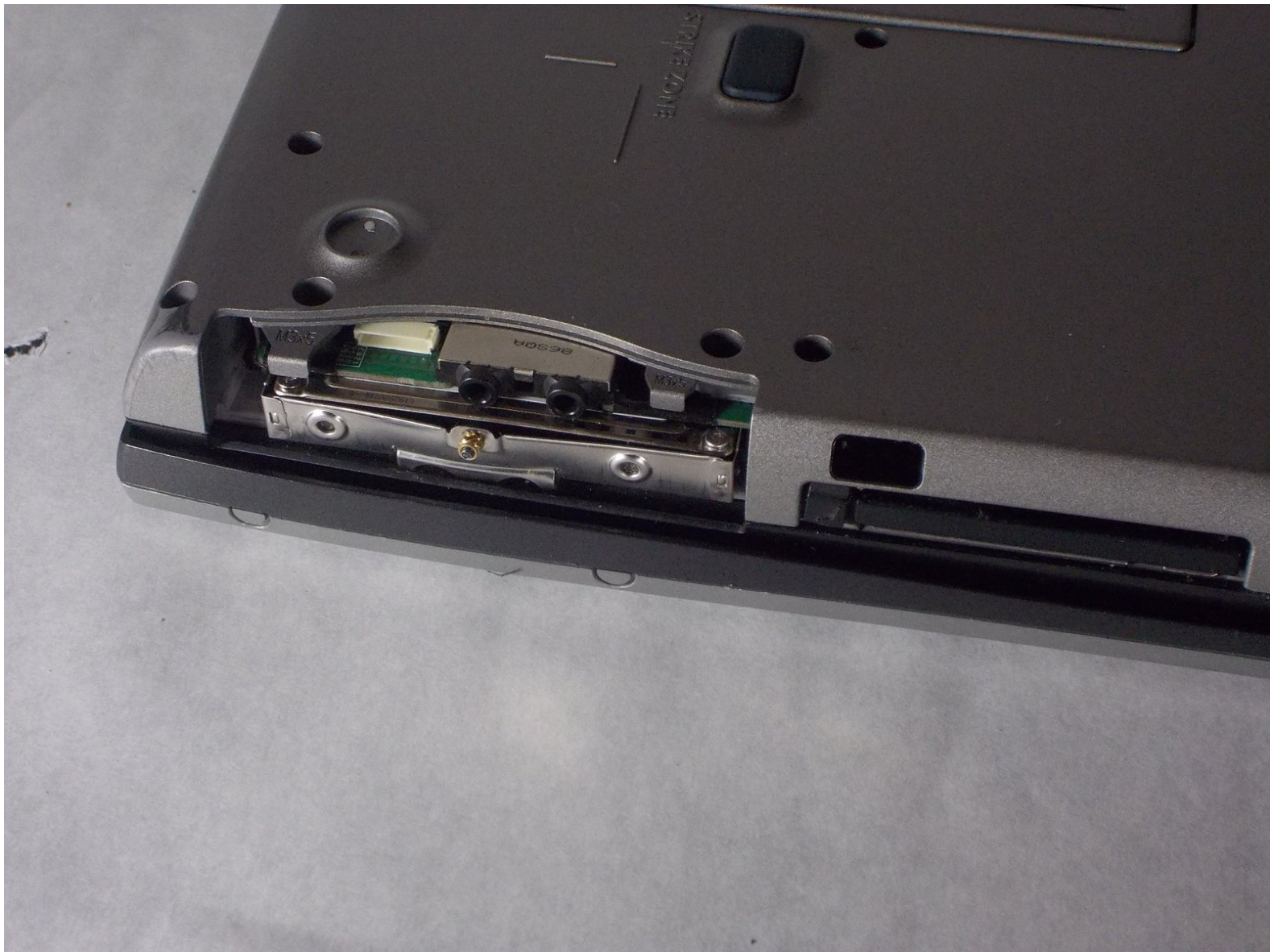




Dell Latitude D530 Hard Drive Replacement

You can tell if your hard drive is broken if...

Written By: Kyle Cabral



INTRODUCTION

You can tell if your hard drive is broken if you get a 'hard drive missing/not detected' error upon computer startup. If this is the case, you need to buy a hard drive and replace the old one with it. Most hard drives can withstand being handled, but it is good to be careful with it nonetheless.



TOOLS:

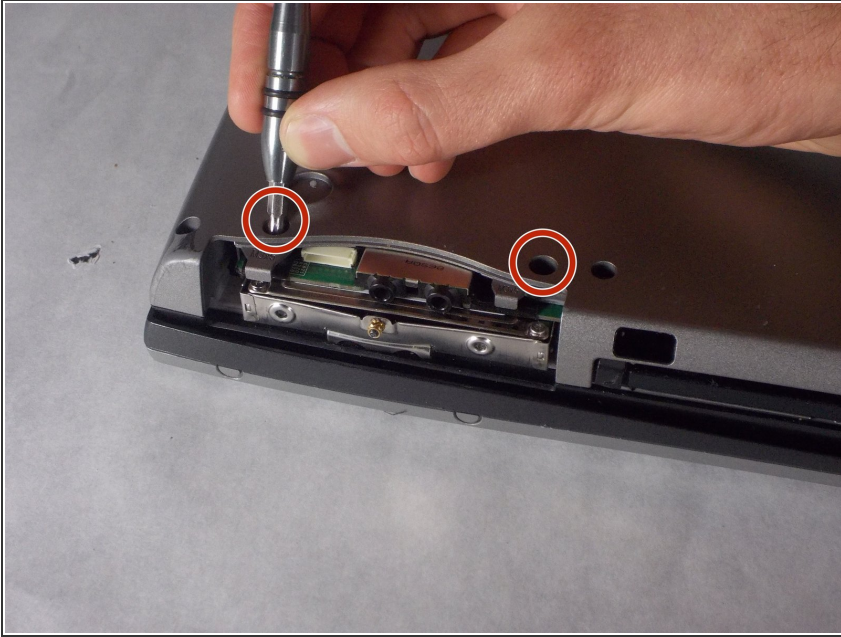
- [Phillips #1 Screwdriver](#) (1)



PARTS:

- [1 TB SSD](#) (1)
- [250 GB SSD](#) (1)
- [Crucial MX500 500 GB SSD](#) (1)
- [2 TB SSD](#) (1)

Step 1 — Hard Drive



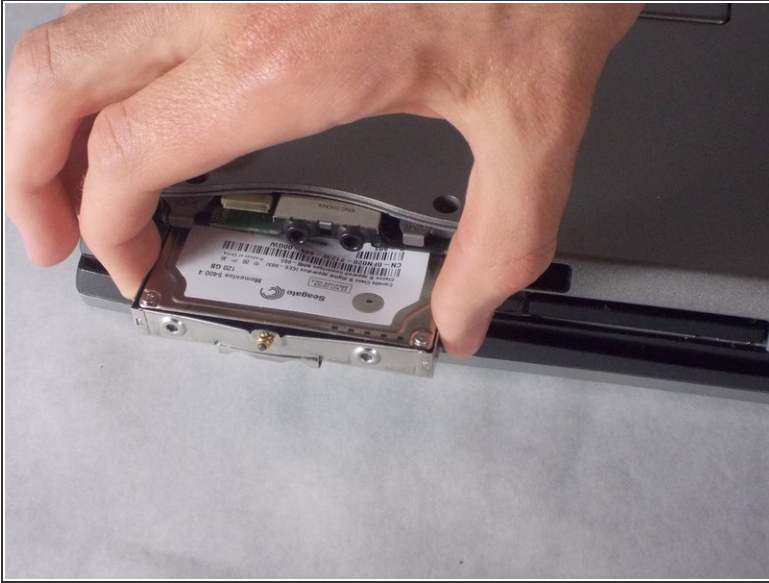
- The hard drive will be located in the side of the laptop.
- Unscrew the two bottom 6mm screws using Phillips #1.

Step 2



- Remove cover to hard drive bay.

Step 3



- Carefully pull hard drive out.

To reassemble your device, follow these instructions in reverse order.