



# Acer Aspire Switch 10 SW5-012-18MY Power Button Replacement

If the power button on your device is not working properly or is unresponsive, you can replace the power button by following the steps in this guide.

Written By: Grecia Corrada



## INTRODUCTION

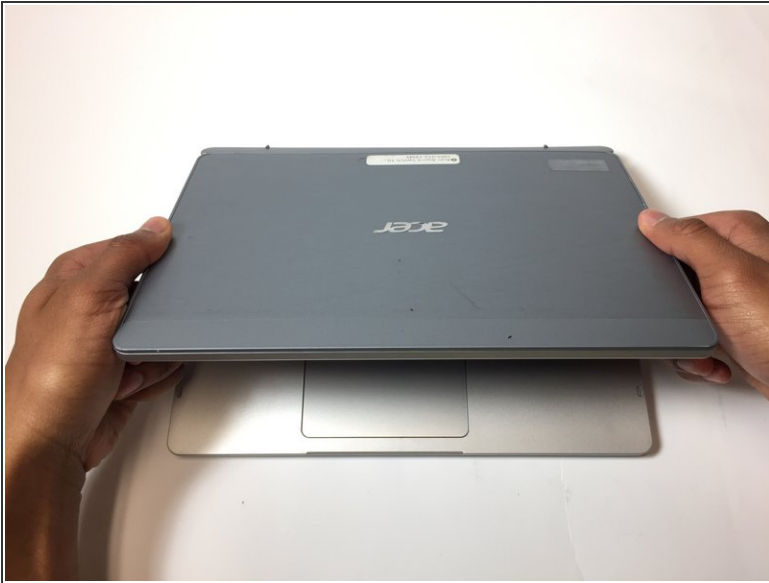
If the power button on your device is unresponsive or is not functioning properly, you may need to replace the power button on your device. Before attempting to replace the power button, please visit the troubleshooting page for this device. Also, make sure that the device is charged correctly. If you have attempted the recommendations on the troubleshooting page and the power button is still not functioning properly, you can replace the power button on your device. Carefully follow the steps in this guide to replace the power button.

---

### TOOLS:

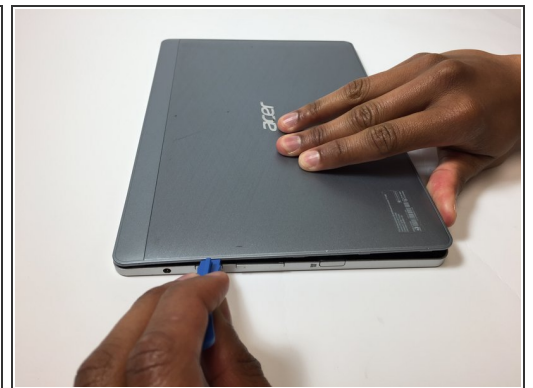
- [iFixit Opening Tool](#) (1)
  - [Phillips #000 Screwdriver](#) (1)
-

## Step 1 — Power Button



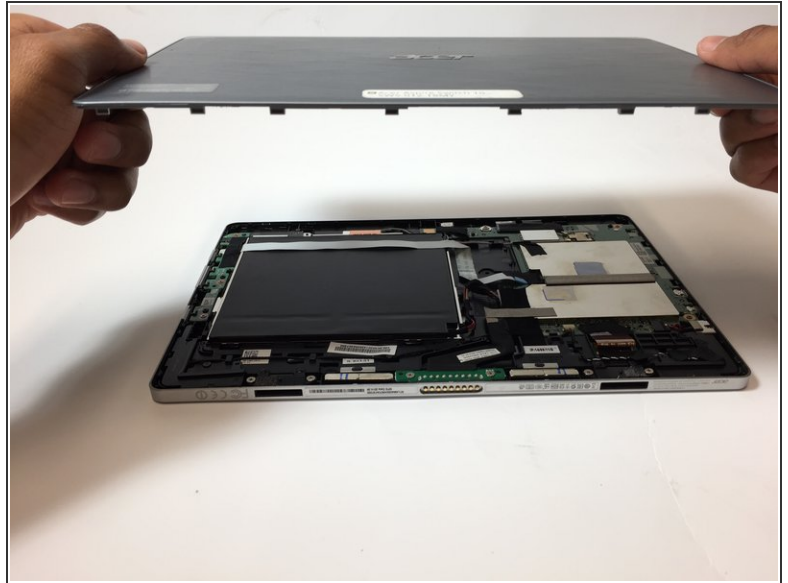
- Remove the tablet from the keyboard.
- ⓘ You will not be needing the keyboard for this guide.

## Step 2



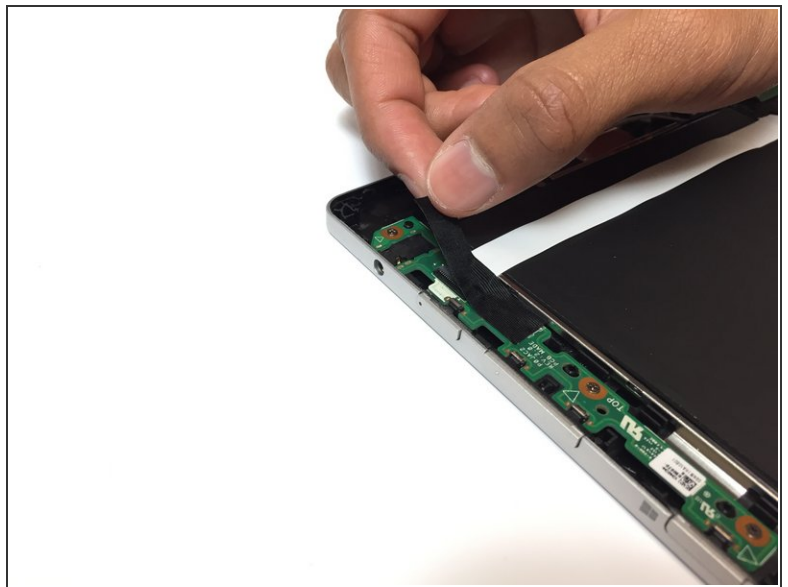
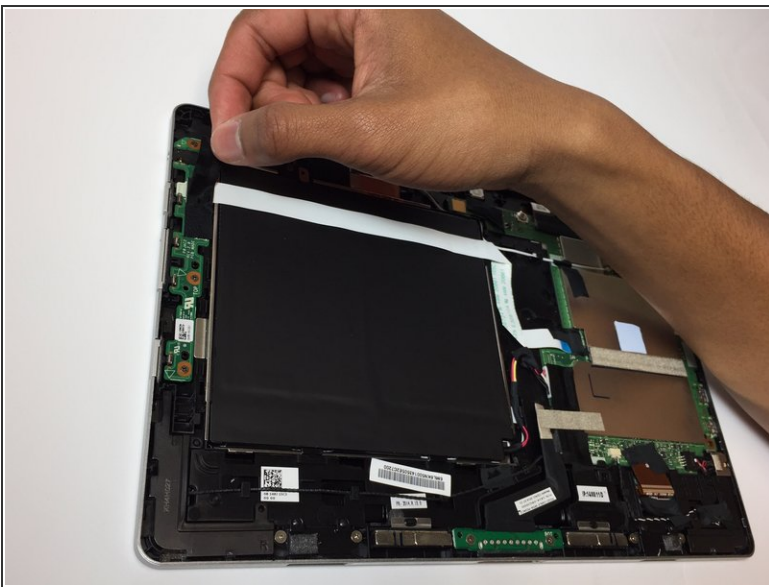
- Use the opening tool to open the back cover. The opening tool should fit under the cover if you place it above the power button.
- Lift this side of the back cover once the opening tool is inside the device.
- Use the opening tool and your hands to gradually work around the edges of the cover.

## Step 3



- Lift the back cover off of the device with your hands.
- ⓘ You will need to use some force to pull off the back cover.

## Step 4



- Remove the piece of black, thin tape that is attached to the circuit board closest to the power button.



## Step 5



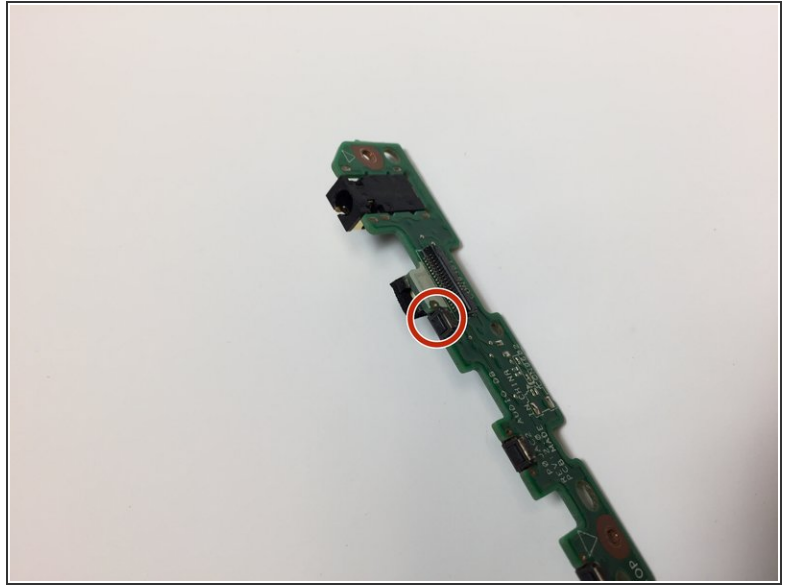
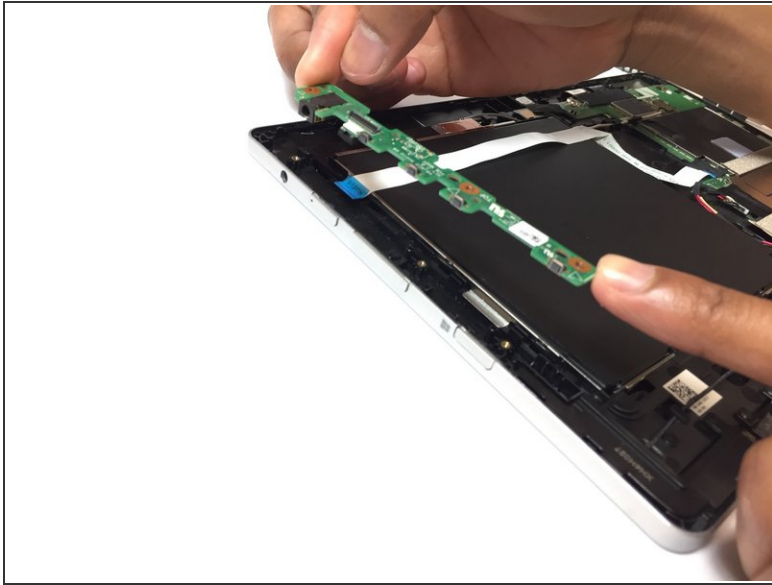
- Use the opening tool to lift the ZIF connector that is holding the ribbon cable in place.
- Pull out the ribbon cable from the circuit board. This cable should have the word "Audio" on it.

## Step 6



- Use the Phillips #000 screwdriver to remove the three 3 mm screws on the circuit board.

## Step 7



- Carefully remove the circuit board from the device. The power button is located on this piece.
- ⓘ To replace the power button on this piece, please go to the page [How To Solder and Desolder Connections](#).

To reassemble your device, follow these instructions in reverse order.