



# Motorola Moto G4 Play Side Buttons Replacement

Use this guide to remove the side buttons in a...

Written By: Francisco Hernández



# INTRODUCTION

Use this guide to remove the side buttons in a Motorola Moto G4 Play. This guide is just for the physical buttons and not the electronic side of it. This guide will be useful if the buttons are stuck or if you want to clean them.

Before you begin, download the [Rescue and Smart Assistant](#) app to backup your device and diagnose whether your problem is software or hardware related.

## TOOLS:

[iFixit Opening Tool](#) (1)

[Tweezers](#) (1)

[Phillips #000 Screwdriver](#) (1)

## Step 1 — Battery



- Open case with a plastic opening tool that has the same size as the divot located at the bottom left of the phone. If you don't have an opening tool, use your finger nails.

## Step 2



- Lift the case by the nearest corner to the divot and remove it from the phone.

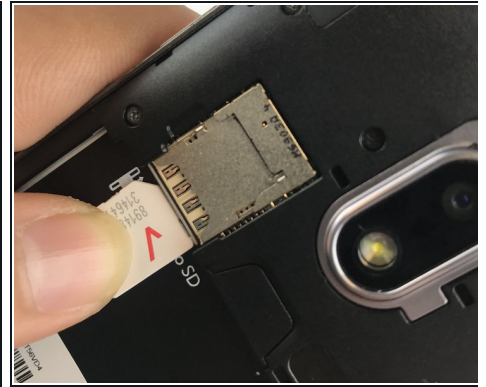
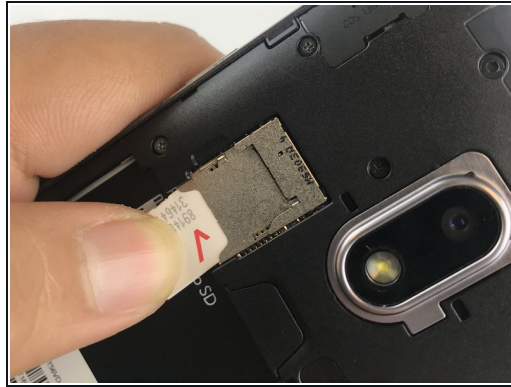
## Step 3



- Place the plastic opening tool into the notch located at the bottom of the battery compartment, and lift upwards. If you don't have an opening tool, use your finger nails.
- Remove battery from your phone.



## Step 4 — Midframe



- Remove any SIM card and/or memory card present using your hand.

## Step 5



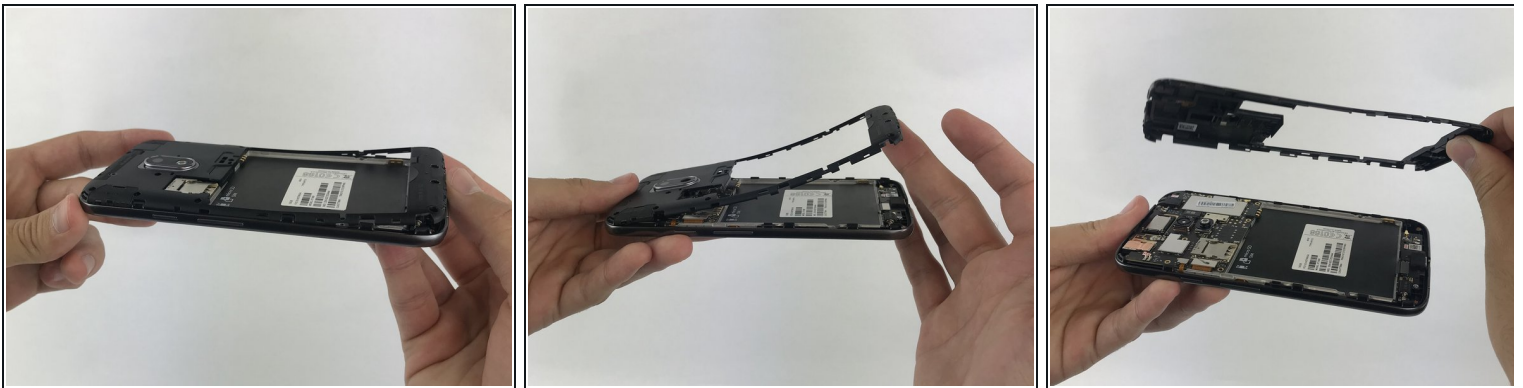
- Remove the small silicon cover at the bottom right of the camera using tweezers.

## Step 6



- Remove the sixteen (16) 3mm Phillips PH000 screws securing the midframe.
- ⓘ Some phones have two shorter screws, one on each side of the battery (double marked with orange circles at left). If your device has these shorter screws, make sure they go back in their original holes.

## Step 7



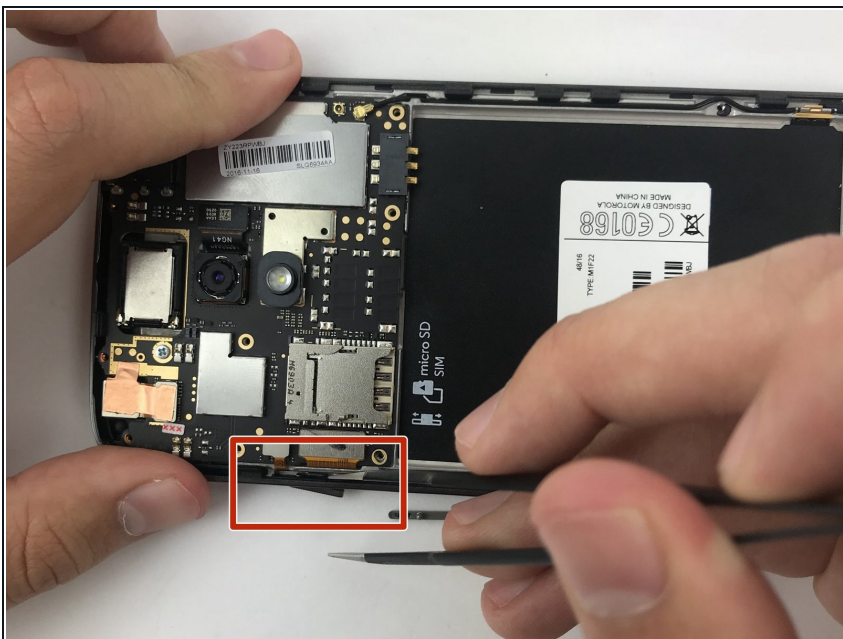
- Remove the back panel assembly with your hands.

## Step 8 — Side Buttons



- Remove the volume button by pushing the round tips out using the tweezers (or a pen if you don't have tweezers).

## Step 9



- Remove the power button by pushing the round tip out using the tweezers (or a pen if you don't have tweezers).

To reassemble your device, follow these instructions in reverse order.